

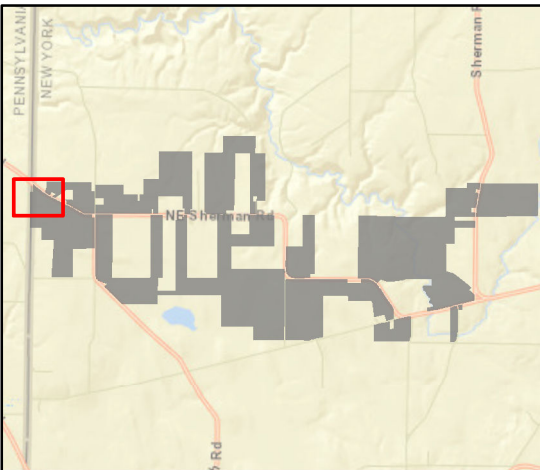
South Ripley Solar Project

Town of Ripley, Chautauqua County, New York

Section 94-c
Application Supplement
Matter No. 21-00750

**Figure S7-2: Sound
Contours - Collection
Substation**

- Receptor
- Participating Receptor
 - Non-Participating Receptor
- Substation Noise Contours (dBA)
- 30-35 dBA
 - 35-40 dBA
 - 40-45 dBA
 - 45-50 dBA
 - 50-55 dBA
 - 55+ dBA
- Facility Components
- Sound Barrier Wall - 12 ft Height
 - Sound Barrier Wall - 20 ft Height
 - Access Road
 - Fenceline
 - PV Panel Area
 - Facility Site
 - Participating Parcel Boundary
 - Non-Participating Parcel Boundary



Notes: 1. Basemap: NYSDOP "2016" orthoimagery map service. 2. This map was generated in ArcMap on January 19, 2022. 3. This is a color graphic. Reproduction in grayscale may misrepresent the data.

