

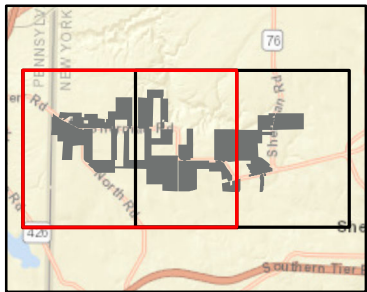
# South Ripley Solar Project

Town of Ripley, Chautauqua County, New York

Section 94-c  
Application Supplement  
Matter No. 21-00750

Figure S3-1: Topographic Maps

- Electric Transmission Line
- Facility Components
  - Access Road
  - Underground Collection Line
  - Overhead Collection Line
  - Inverter
  - Battery Energy Storage System
  - Collection Substation
  - POI Substation
  - PV Panel Area
  - Fenceline
  - Laydown Yard
  - Limit of Construction Activity
  - Facility Site
  - Town Boundary
  - State Boundary



Sheet 1 of 2

Notes: 1. Basemap: ESRI ArcGIS Online "USGS Topo" map service. 2. This map was generated in ArcMap on January 5, 2022. 3. This is a color graphic. Reproduction in grayscale may misrepresent the data.





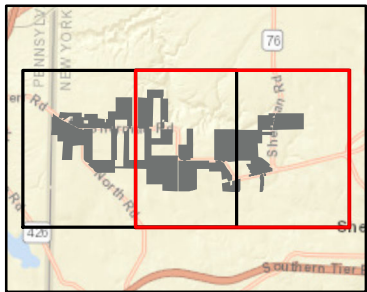
# South Ripley Solar Project

Town of Ripley, Chautauqua County, New York

Section 94-c  
Application Supplement  
Matter No. 21-00750

Figure S3-1: Topographic Maps

- Facility Components
- Access Road
  - Underground Collection Line
  - Overhead Collection Line
  - Inverter
  - PV Panel Area
  - Fenceline
  - Laydown Yard
  - Limit of Construction Activity
  - Facility Site
  - Town Boundary
  - State Boundary



Sheet 2 of 2

Notes: 1. Basemap: ESRI ArcGIS Online "USGS Topo" map service. 2. This map was generated in ArcMap on January 5, 2022. 3. This is a color graphic. Reproduction in grayscale may misrepresent the data.

