

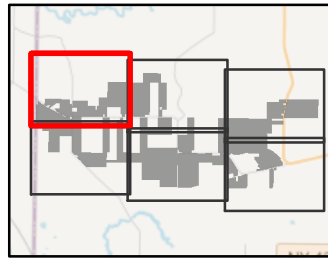
South Ripley Solar Project

Town of Ripley, Chautauqua County, New York

Section 94-c
Supplement Application
Matter No. 21-00750

Figure S3-11: Facility Layout on Aerial Overlays

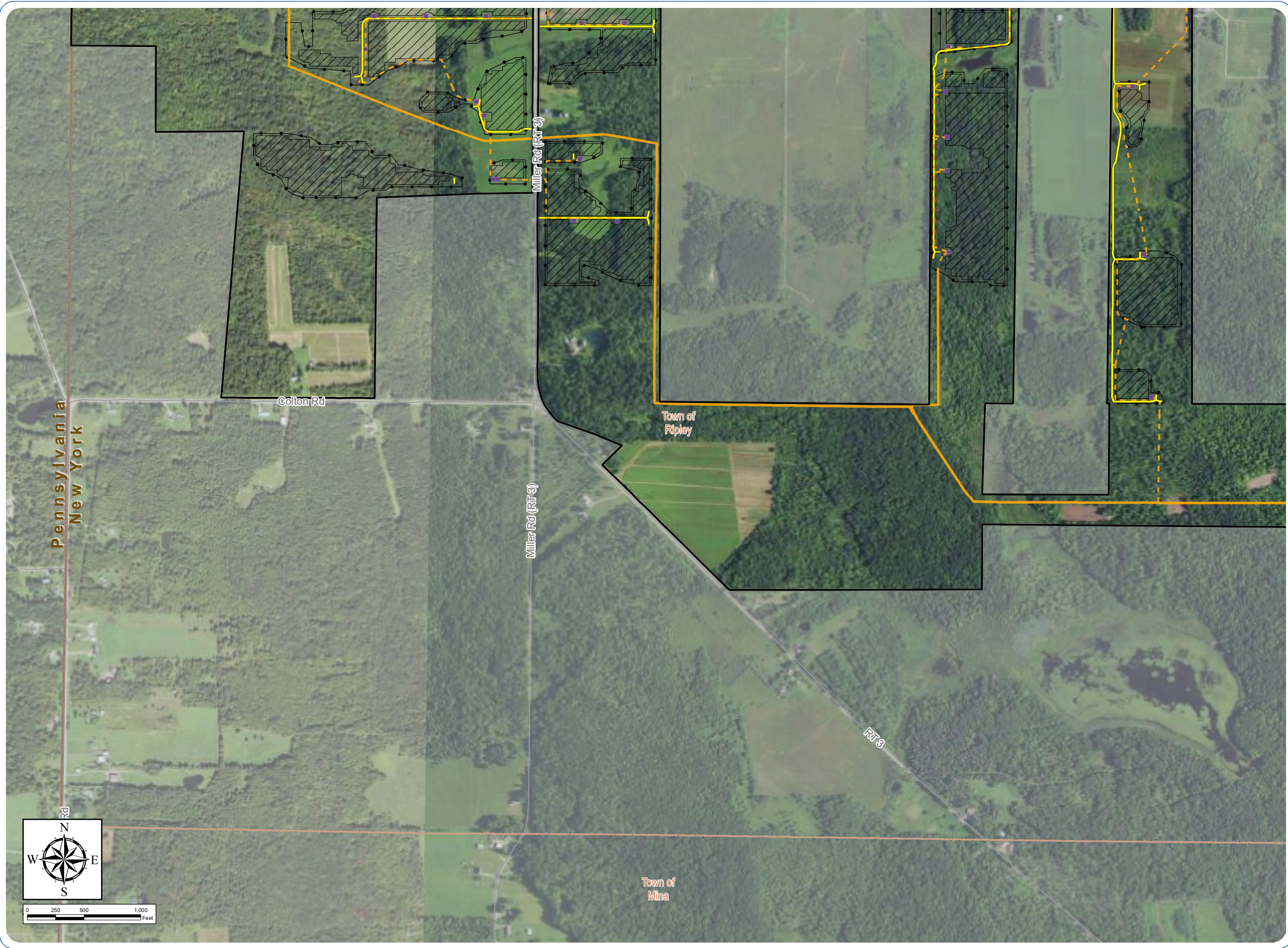
- Facility Components
- Access Road
 - Underground Collection Line
 - Overhead Collection Line
 - Inverter
 - Battery Energy Storage System
 - Collection Substation
 - POI Substation
 - PV Panel Area
 - Fenceline
 - Laydown Yard
 - Facility Site



Sheet 1 of 6

Notes: 1. Basemap: USDA NAIP "2019 New York 60 cm" orthoimagery map service. 2. This map was generated in ArcMap on January 6, 2022. 3. This is a color graphic. Reproduction in grayscale may misrepresent the data.





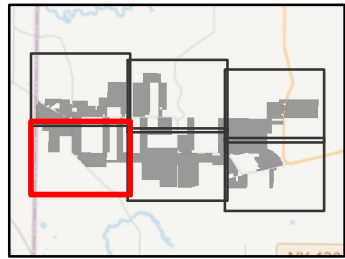
South Ripley Solar Project

Town of Ripley, Chautauqua County, New York

Section 94-c
Supplement Application
Matter No. 21-00750

Figure S3-11: Facility Layout on Aerial Overlays

- Facility Components
- Access Road
 - Underground Collection Line
 - Overhead Collection Line
 - Inverter
 - PV Panel Area
 - Fenceline
 - Facility Site



Sheet 2 of 6

Notes: 1. Basemap: USDA NAIP "2019 New York 60 cm" orthoimagery map service. 2. This map was generated in ArcMap on January 6, 2022. 3. This is a color graphic. Reproduction in grayscale may misrepresent the data.



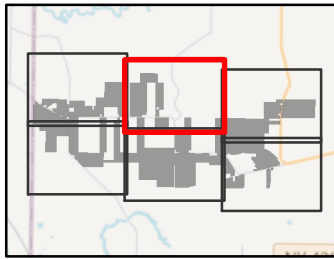
South Ripley Solar Project

Town of Ripley, Chautauqua County, New York

Section 94-c
Supplement Application
Matter No. 21-00750

Figure S3-11: Facility Layout on Aerial Overlays

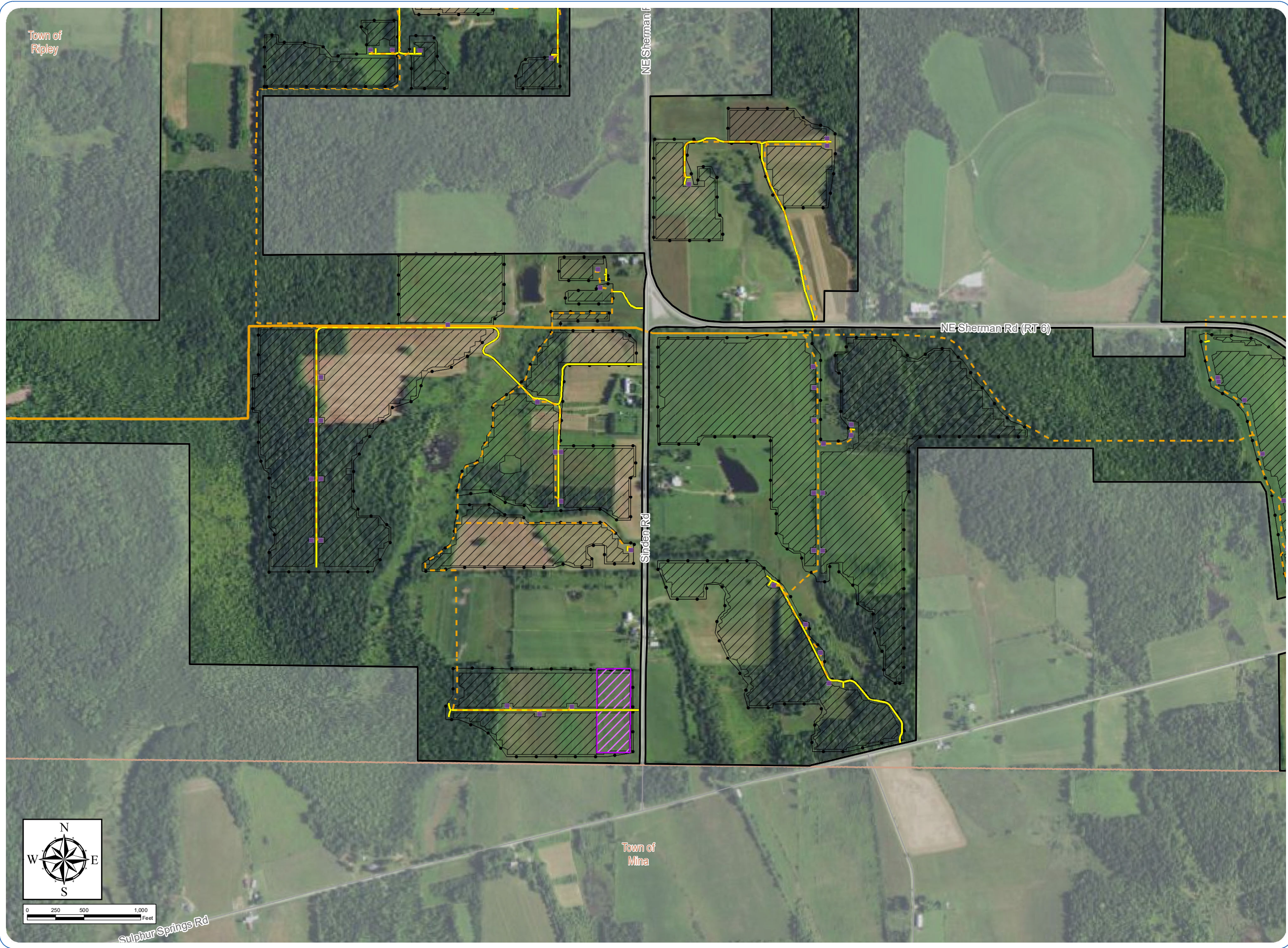
- Facility Components
- Access Road
 - Underground Collection Line
 - Inverter
 - PV Panel Area
 - Fenceline
 - Laydown Yard
 - Facility Site



Sheet 3 of 6

Notes: 1. Basemap: USDA NAIP "2019 New York 60 cm" orthoimagery map service. 2. This map was generated in ArcMap on January 6, 2022. 3. This is a color graphic. Reproduction in grayscale may misrepresent the data.





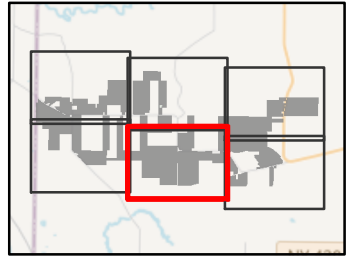
South Ripley Solar Project

Town of Ripley, Chautauqua County, New York

Section 94-c
Supplement Application
Matter No. 21-00750

Figure S3-11: Facility Layout on Aerial Overlays

- Facility Components
- Access Road
 - Underground Collection Line
 - Overhead Collection Line
 - Inverter
 - PV Panel Area
 - Fenceline
 - Laydown Yard
 - Facility Site



Sheet 4 of 6

Notes: 1. Basemap: USDA NAIP "2019 New York 60 cm" orthoimagery map service. 2. This map was generated in ArcMap on January 6, 2022. 3. This is a color graphic. Reproduction in grayscale may misrepresent the data.



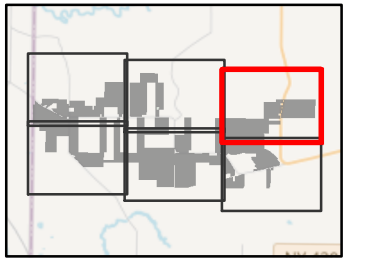
South Ripley Solar Project

Town of Ripley, Chautauqua County, New York

Section 94-c
Supplement Application
Matter No. 21-00750

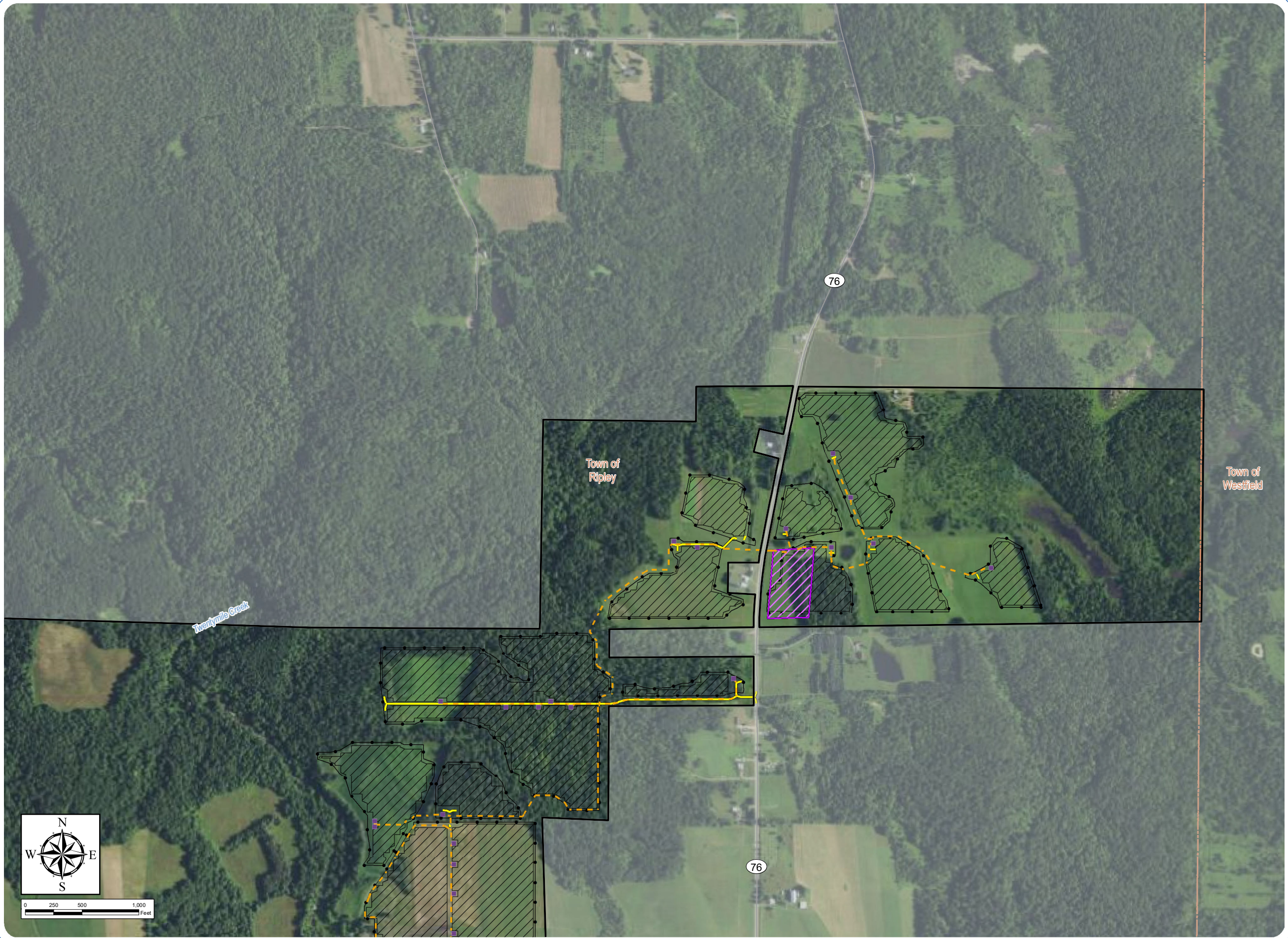
Figure S3-11: Facility Layout on Aerial Overlays

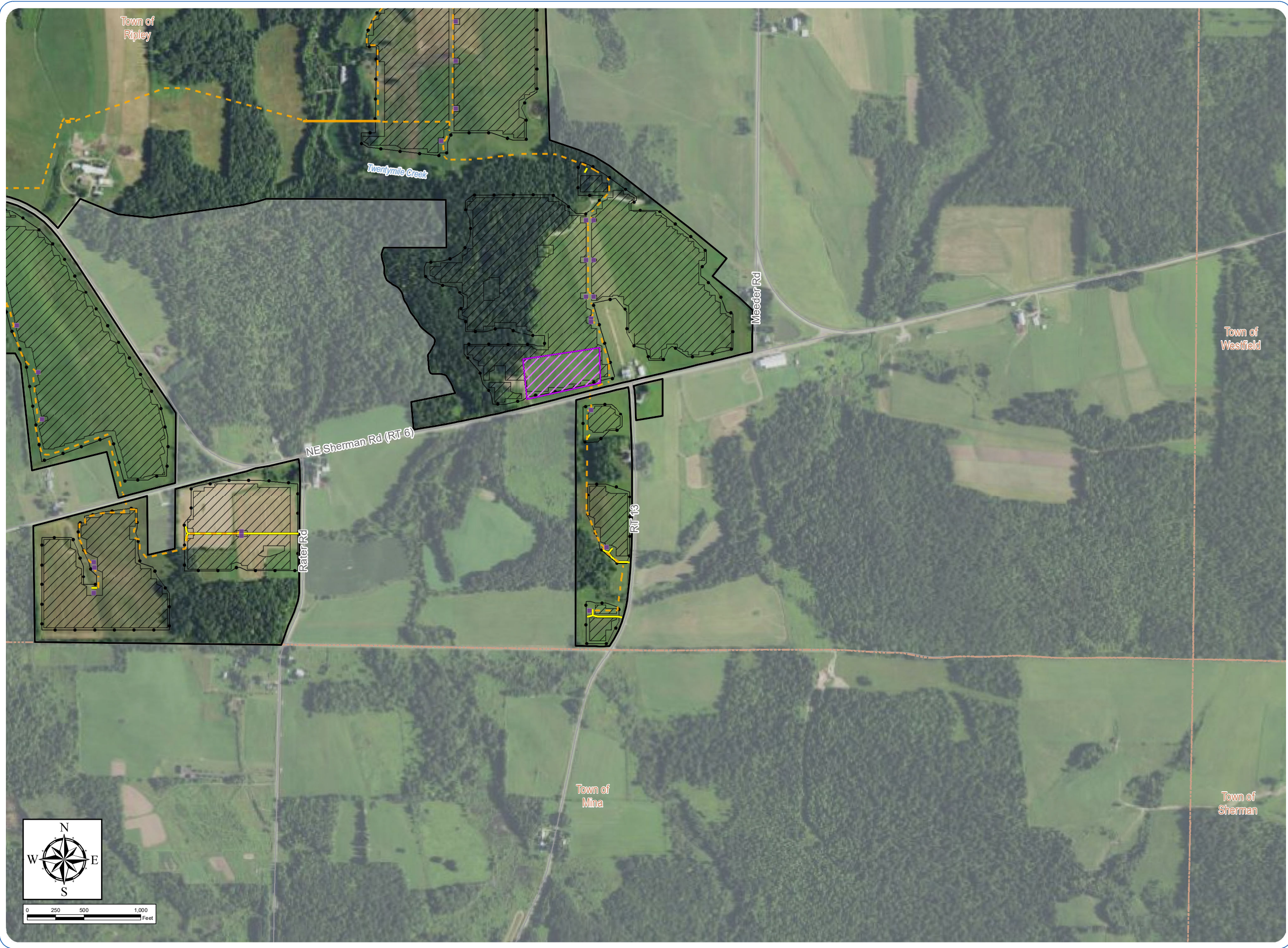
- Facility Components
- Access Road
 - Underground Collection Line
 - Inverter
 - PV Panel Area
 - Fenceline
 - Laydown Yard
 - Facility Site



Sheet 5 of 6

Notes: 1. Basemap: USDA NAIP "2019 New York 60 cm" orthoimagery map service. 2. This map was generated in ArcMap on January 6, 2022. 3. This is a color graphic. Reproduction in grayscale may misrepresent the data.





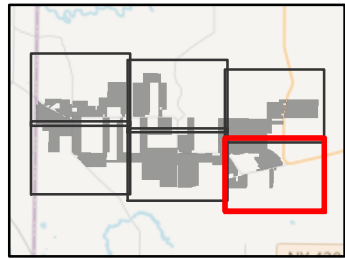
South Ripley Solar Project

Town of Ripley, Chautauqua County, New York

Section 94-c
Supplement Application
Matter No. 21-00750

Figure S3-11: Facility Layout on Aerial Overlays

- Facility Components
- Access Road
 - Underground Collection Line
 - Overhead Collection Line
 - Inverter
 - PV Panel Area
 - Fenceline
 - Laydown Yard
 - Facility Site



Sheet 6 of 6

Notes: 1. Basemap: USDA NAIP "2019 New York 60 cm" orthoimagery map service. 2. This map was generated in ArcMap on January 6, 2022. 3. This is a color graphic. Reproduction in grayscale may misrepresent the data.

