

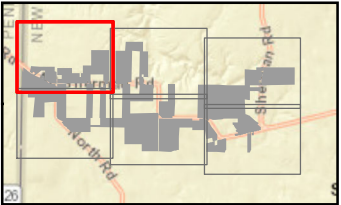
South Ripley Solar Project

Town of Ripley, Chautauqua County, New York

Section 94-c
Application Supplement
Matter No. 21-00750

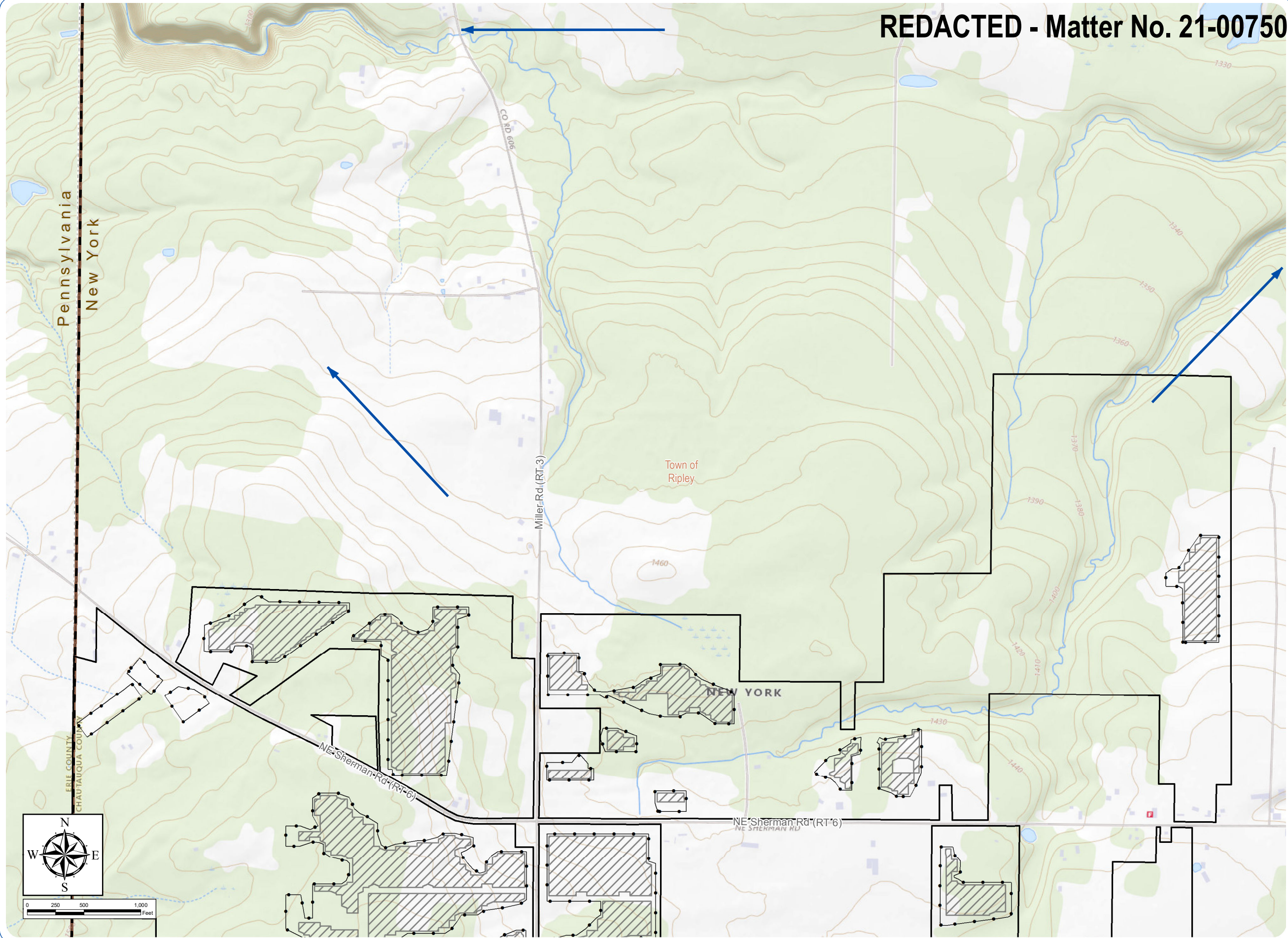
Figure S13-2: Groundwater Wells, Aquifers, and Recharge Areas

- Private Well - REDACTED
 - Chautauqua County Water Resource - REDACTED
 - NYSDEC-Mapped Water Well
 - Groundwater Flow Direction
- Facility Components
- PV Panel Area
 - Fenceline
 - Facility Site



Sheet 1 of 6

Notes: 1. Basemap: ESRI ArcGIS Online "USGS Topo" map service. 2. This map was generated in ArcMap on January 13, 2022. 3. This is a color graphic. Reproduction in grayscale may misrepresent the data.



REDACTED Matter No. 21-00750

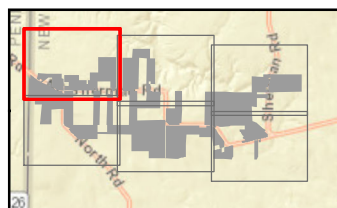
South Ripley Solar Project

Town of Ripley, Chautauqua County, New York

Section 94-c
Application Supplement
Matter No. 21-00750

Figure S13-2: Groundwater Wells, Aquifers, and Recharge Areas

- Private Well - REDACTED
- Chautauqua County Water Resource - REDACTED
- NYSDEC-Mapped Water Well
- Groundwater Flow Direction
- Facility Components
 - PV Panel Area
 - Fenceline
 - Facility Site



Sheet 2 of 6

Notes: 1. Basemap: ESRI ArcGIS Online "USGS Topo" map service. 2. This map was generated in ArcMap on January 13, 2022. 3. This is a color graphic. Reproduction in grayscale may misrepresent the data.



REDACTED - Matter No. 21-00750

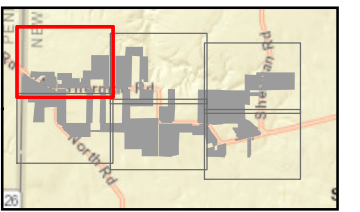
South Ripley Solar Project

Town of Ripley, Chautauqua County, New York

Section 94-c
Application Supplement
Matter No. 21-00750

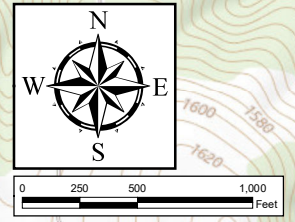
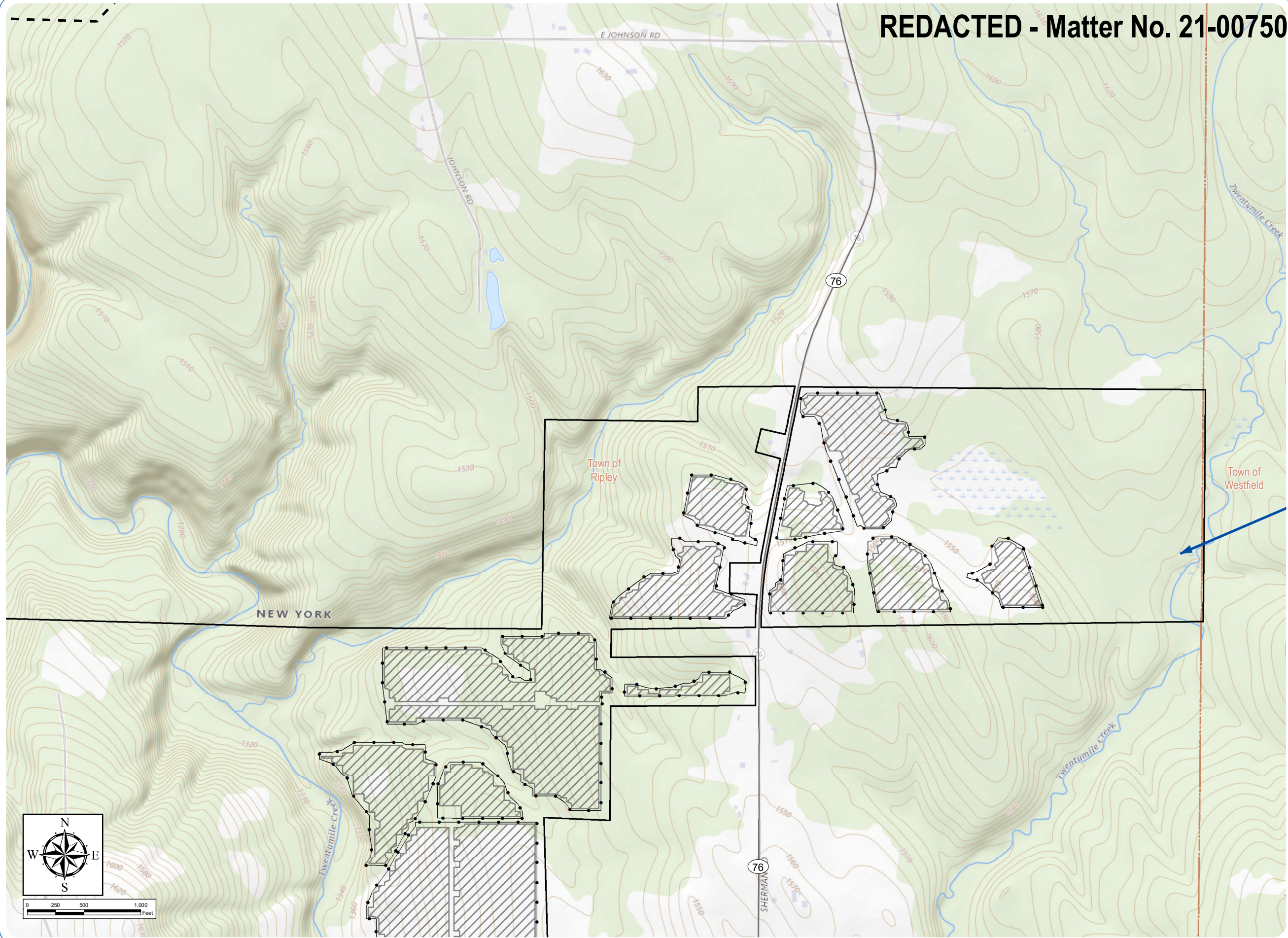
Figure S13-2: Groundwater Wells, Aquifers, and Recharge Areas

- Private Well - REDACTED
- Chautauqua County Water Resource - REDACTED
- NYSDEC-Mapped Water Well
- Groundwater Flow Direction
- Facility Components
 - PV Panel Area
 - Fenceline
 - Facility Site



Sheet 3 of 6

Notes: 1. Basemap: ESRI ArcGIS Online "USGS Topo" map service. 2. This map was generated in ArcMap on January 13, 2022. 3. This is a color graphic. Reproduction in grayscale may misrepresent the data.



REDACTED - Matter No. 21-00750

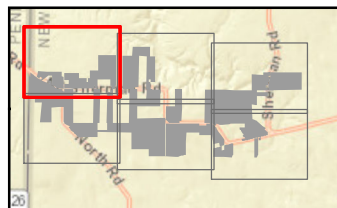
South Ripley Solar Project

Town of Ripley, Chautauqua County, New York

Section 94-c
Application Supplement
Matter No. 21-00750

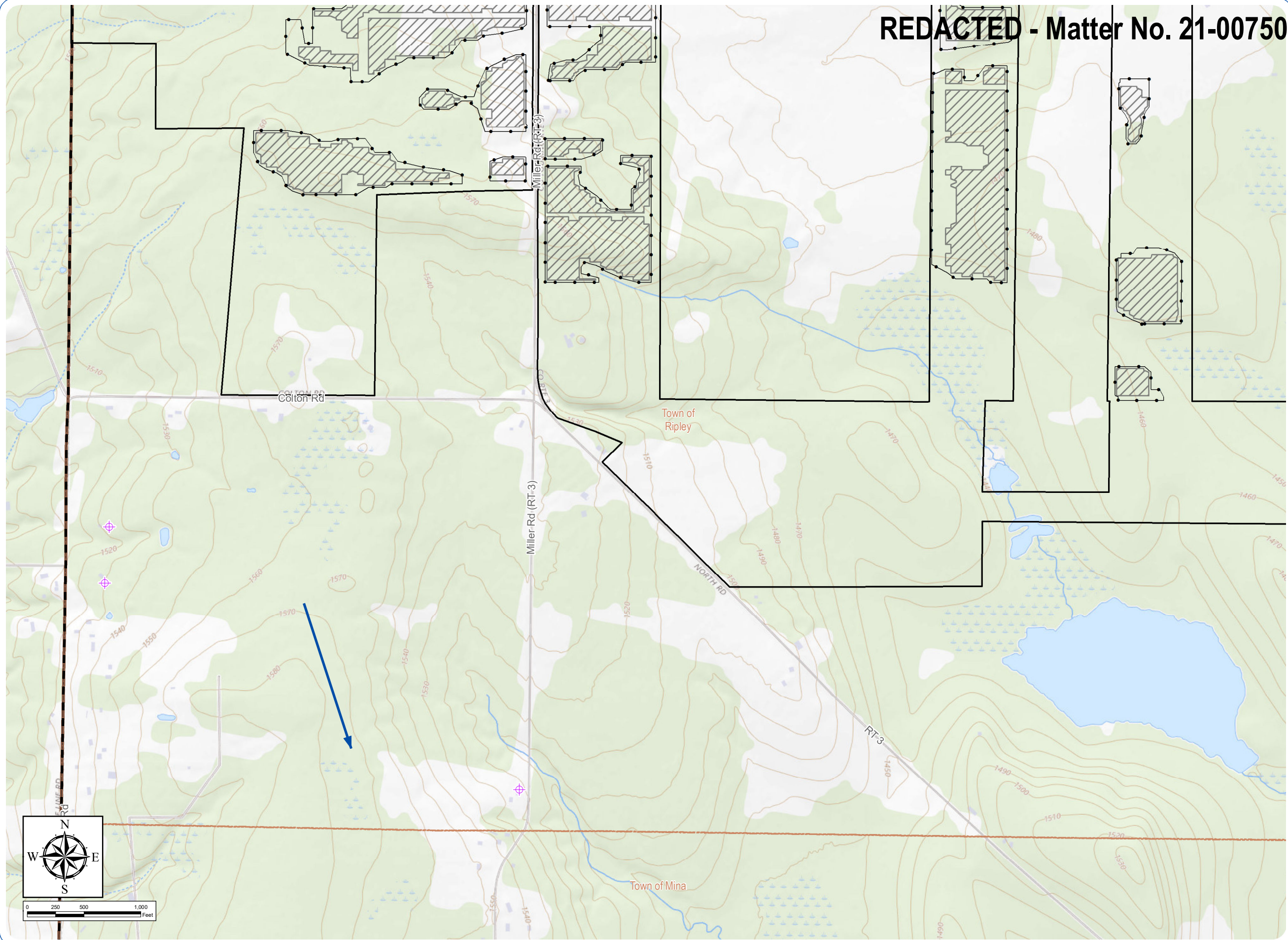
Figure S13-2: Groundwater Wells, Aquifers, and Recharge Areas

- Private Well - REDACTED
 - Chautauqua County Water Resource - REDACTED
 - NYSDEC-Mapped Water Well
 - Groundwater Flow Direction
- Facility Components
- PV Panel Area
 - Fenceline
 - Facility Site



Sheet 4 of 6

Notes: 1. Basemap: ESRI ArcGIS Online "USGS Topo" map service. 2. This map was generated in ArcMap on January 13, 2022. 3. This is a color graphic. Reproduction in grayscale may misrepresent the data.



REDACTED - Matter No. 21-00750

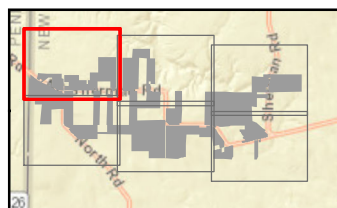
South Ripley Solar Project

Town of Ripley, Chautauqua County, New York

Section 94-c
Application Supplement
Matter No. 21-00750

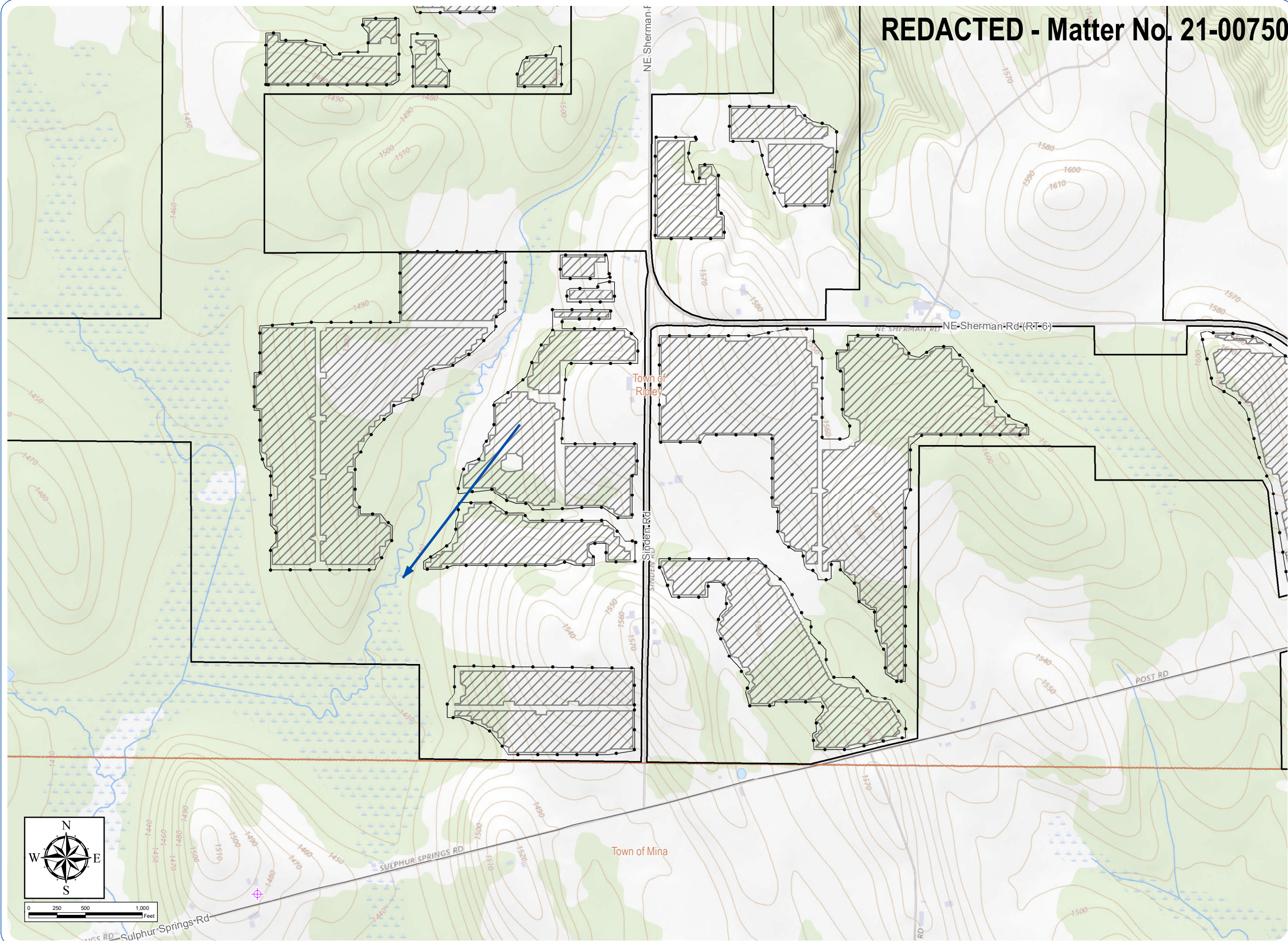
Figure S13-2: Groundwater Wells, Aquifers, and Recharge Areas

- Private Well - REDACTED
- Chautauqua County Water Resource - REDACTED
- NYSDEC-Mapped Water Well
- Groundwater Flow Direction
- Facility Components
 - PV Panel Area
 - Fenceline
 - Facility Site



Sheet 5 of 6

Notes: 1. Basemap: ESRI ArcGIS Online "USGS Topo" map service. 2. This map was generated in ArcMap on January 13, 2022. 3. This is a color graphic. Reproduction in grayscale may misrepresent the data.



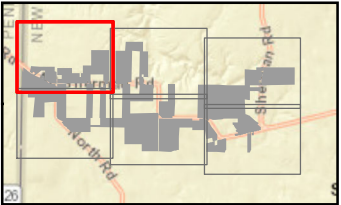
South Ripley Solar Project

Town of Ripley, Chautauqua County, New York

Section 94-c
Application Supplement
Matter No. 21-00750

Figure S13-2: Groundwater Wells, Aquifers, and Recharge Areas

- Private Well - REDACTED
- Chautauqua County Water Resource - REDACTED
- NYSDEC-Mapped Water Well
- Groundwater Flow Direction
- Unconsolidated Aquifer
- Facility Components
 - PV Panel Area
 - Fenceline
 - Facility Site



Sheet 6 of 6

Notes: 1. Basemap: ESRI ArcGIS Online "USGS Topo" map service. 2. This map was generated in ArcMap on January 13, 2022. 3. This is a color graphic. Reproduction in grayscale may misrepresent the data.

