

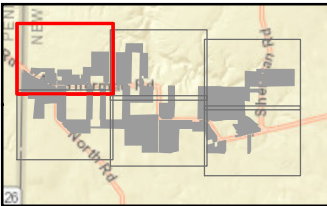
South Ripley Solar Project

Town of Ripley, Chautauqua County, New York

Section 94-c
Application Supplement
Matter No. 21-00750

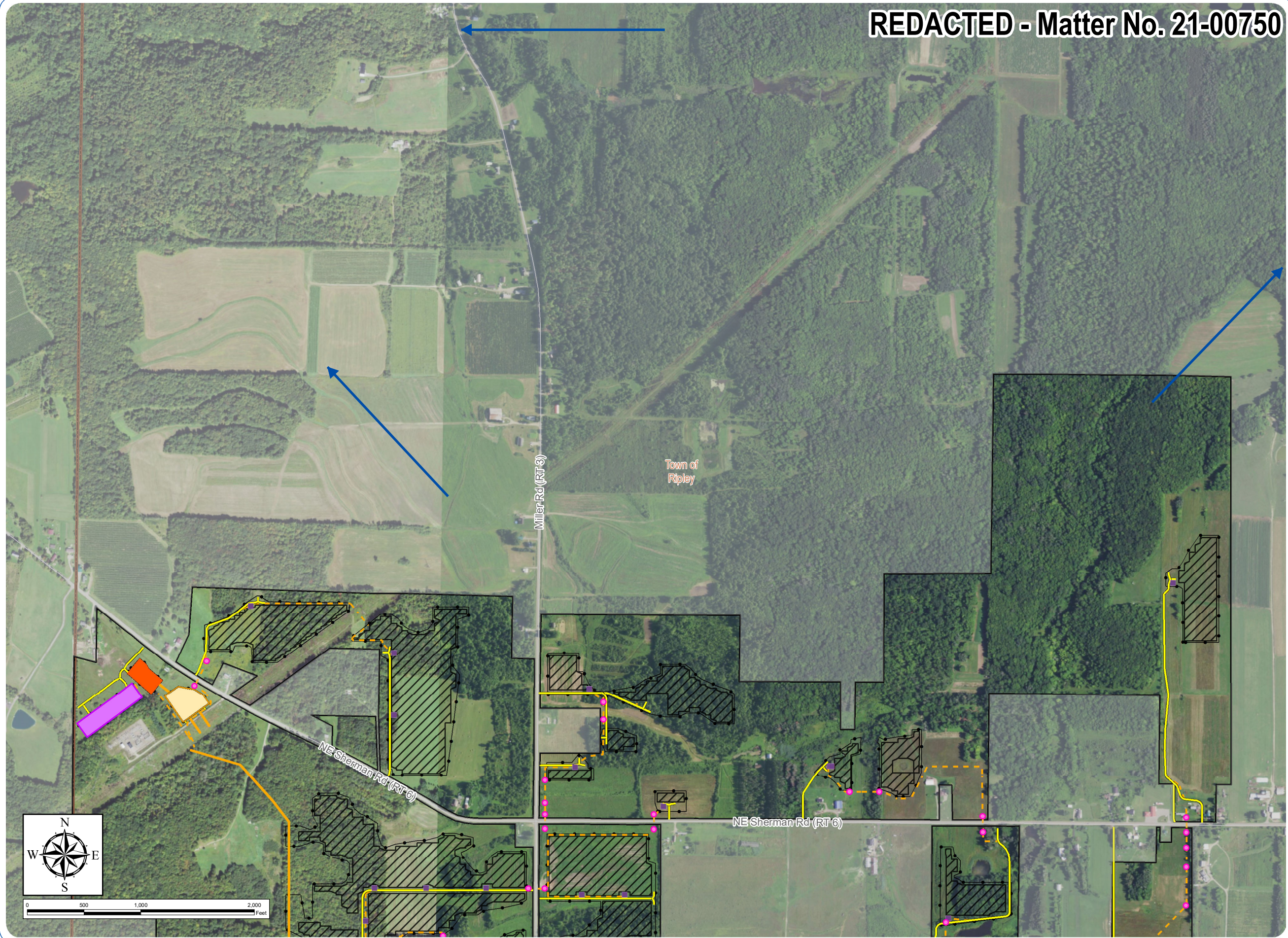
Figure S13-1: Groundwater Well Offsets

- Trenchless Installation Location
- Chautauqua County Water Resource - REDACTED
- NYSDEC-Mapped Water Well
- Private Well - REDACTED
- Groundwater Flow Direction
- Unconsolidated Aquifer
- Groundwater Well Offset 100 feet
- Groundwater Well Offset 200 feet
- Groundwater Well Offset 500 feet
- Facility Components
 - Access Road
 - Underground Collection Line
 - Overhead Collection Line
 - Inverter
 - Battery Energy Storage System
 - Collection Substation
 - POI Substation
 - PV Panel Area
 - Fenceline
 - Facility Site



Sheet 1 of 6

Notes: 1. Basemap: USDA NAIP "2019 New York 60cm" orthoimagery map service. 2. This map was generated in ArcMap on January 13, 2022. 3. This is a color graphic. Reproduction in grayscale may misrepresent the data.



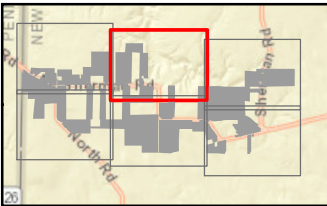
South Ripley Solar Project

Town of Ripley, Chautauqua County, New York

Section 94-c
Application Supplement
Matter No. 21-00750

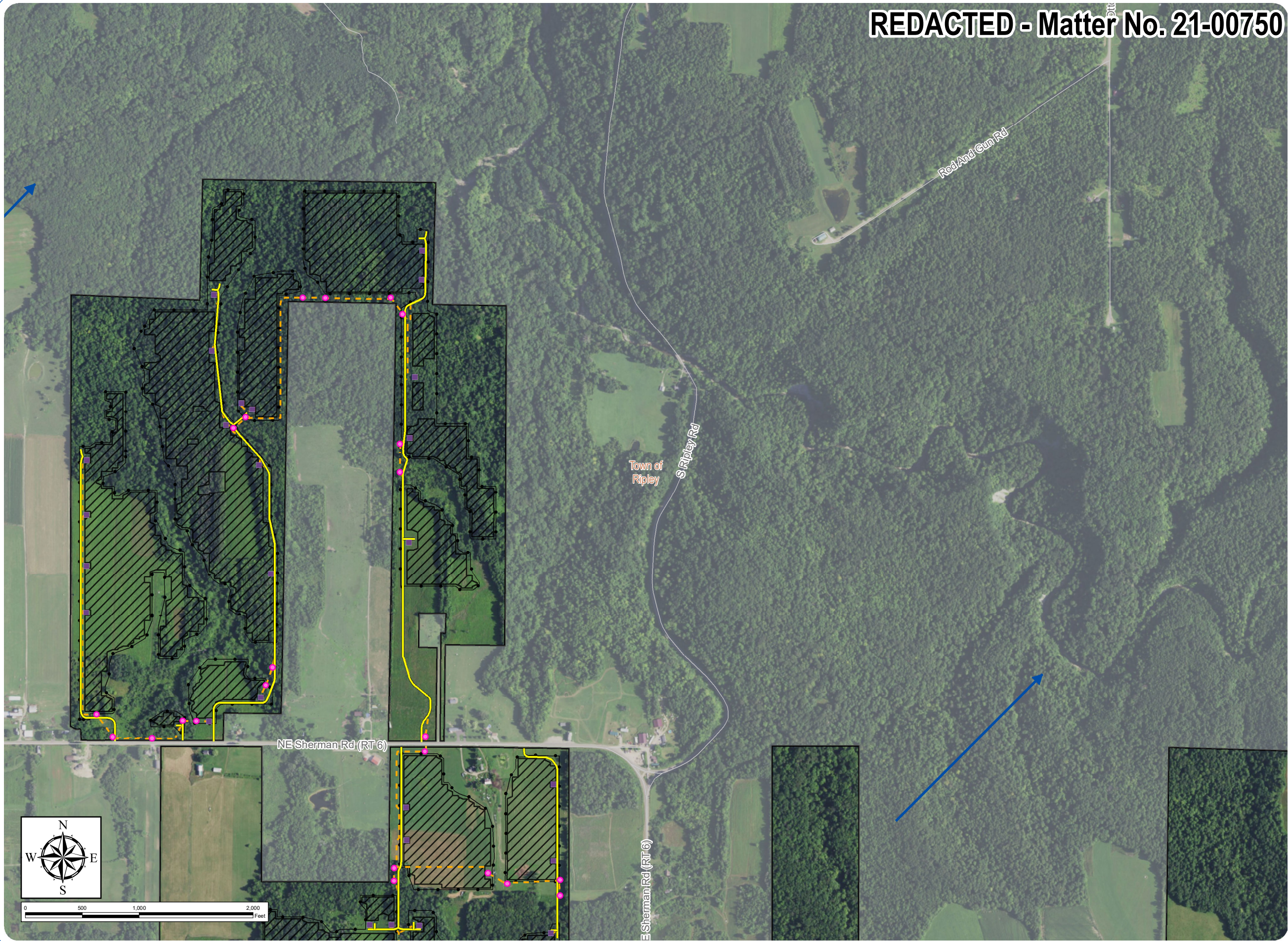
Figure S13-1: Groundwater Well Offsets

- Trenchless Installation Location
- Chautauqua County Water Resource - REDACTED
- NYSDEC-Mapped Water Well
- Private Well - REDACTED
- Groundwater Flow Direction
- Unconsolidated Aquifer
- Groundwater Well Offset 100 feet
- Groundwater Well Offset 200 feet
- Groundwater Well Offset 500 feet
- Facility Components
 - Access Road
 - Underground Collection Line
 - Overhead Collection Line
 - Inverter
 - PV Panel Area
 - Fenceline
 - Facility Site



Sheet 2 of 6

Notes: 1. Basemap: USDA NAIP "2019 New York 60cm" orthoimagery map service. 2. This map was generated in ArcMap on January 13, 2022. 3. This is a color graphic. Reproduction in grayscale may misrepresent the data.



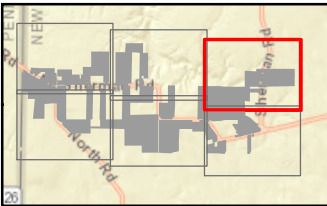
South Ripley Solar Project

Town of Ripley, Chautauqua County, New York

Section 94-c
Application Supplement
Matter No. 21-00750

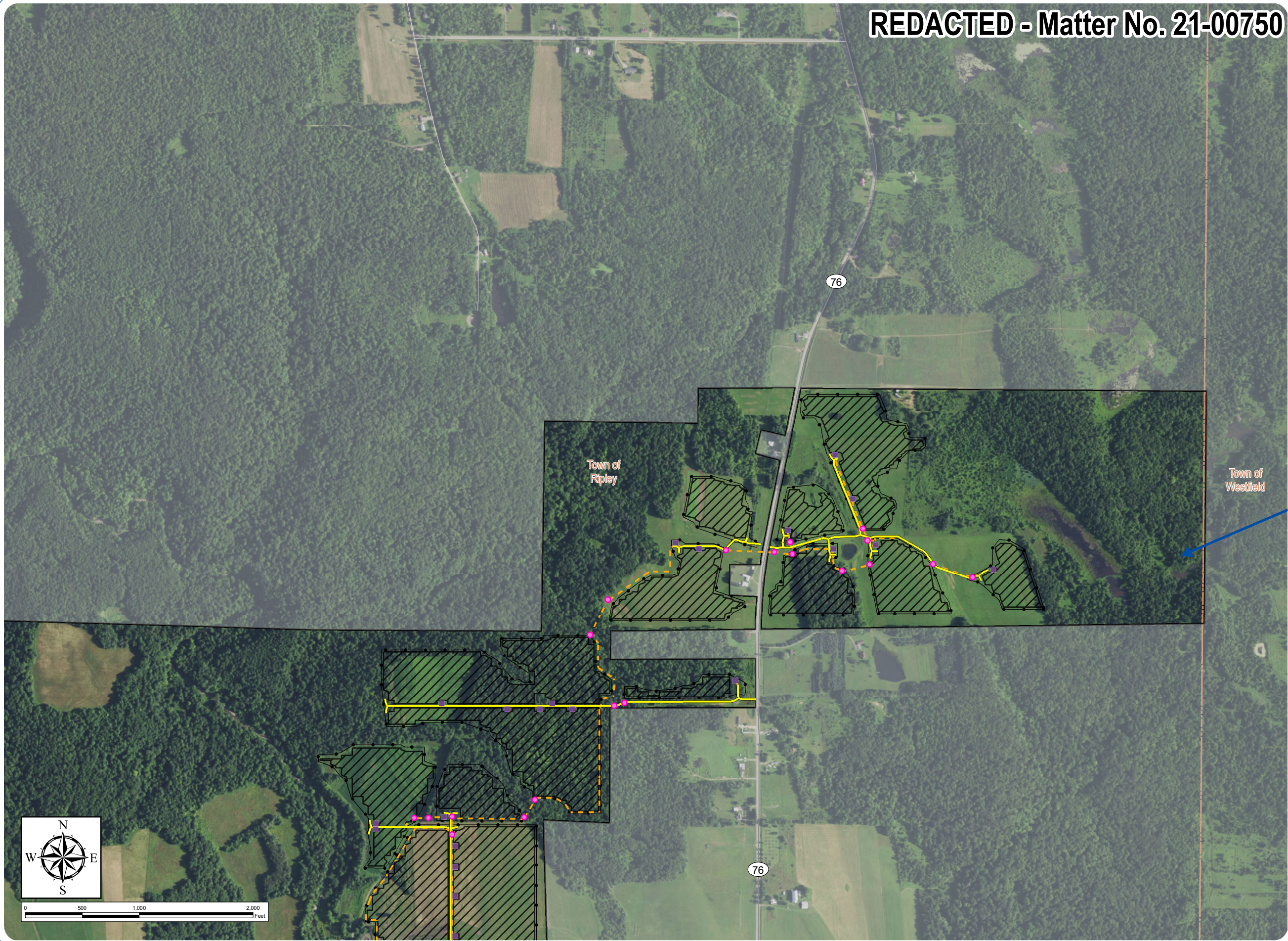
Figure S13-1: Groundwater Well Offsets

- Trenchless Installation Location
- Chautauqua County Water Resource - REDACTED
- NYSDEC-Mapped Water Well
- Private Well - REDACTED
- Groundwater Flow Direction
- Unconsolidated Aquifer
- Groundwater Well Offset 100 feet
- Groundwater Well Offset 200 feet
- Groundwater Well Offset 500 feet
- Facility Components
 - Access Road
 - Underground Collection Line
 - Overhead Collection Line
 - Inverter
 - PV Panel Area
 - Fenceline
 - Facility Site



Sheet 3 of 6

Notes: 1. Basemap: USDA NAIP "2019 New York 60cm" orthoimagery map service. 2. This map was generated in ArcMap on January 13, 2022. 3. This is a color graphic. Reproduction in grayscale may misrepresent the data.



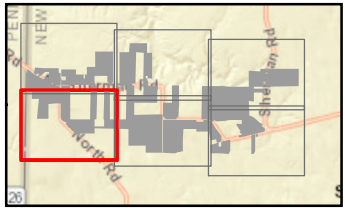
South Ripley Solar Project

Town of Ripley, Chautauqua County, New York

Section 94-c
Application Supplement
Matter No. 21-00750

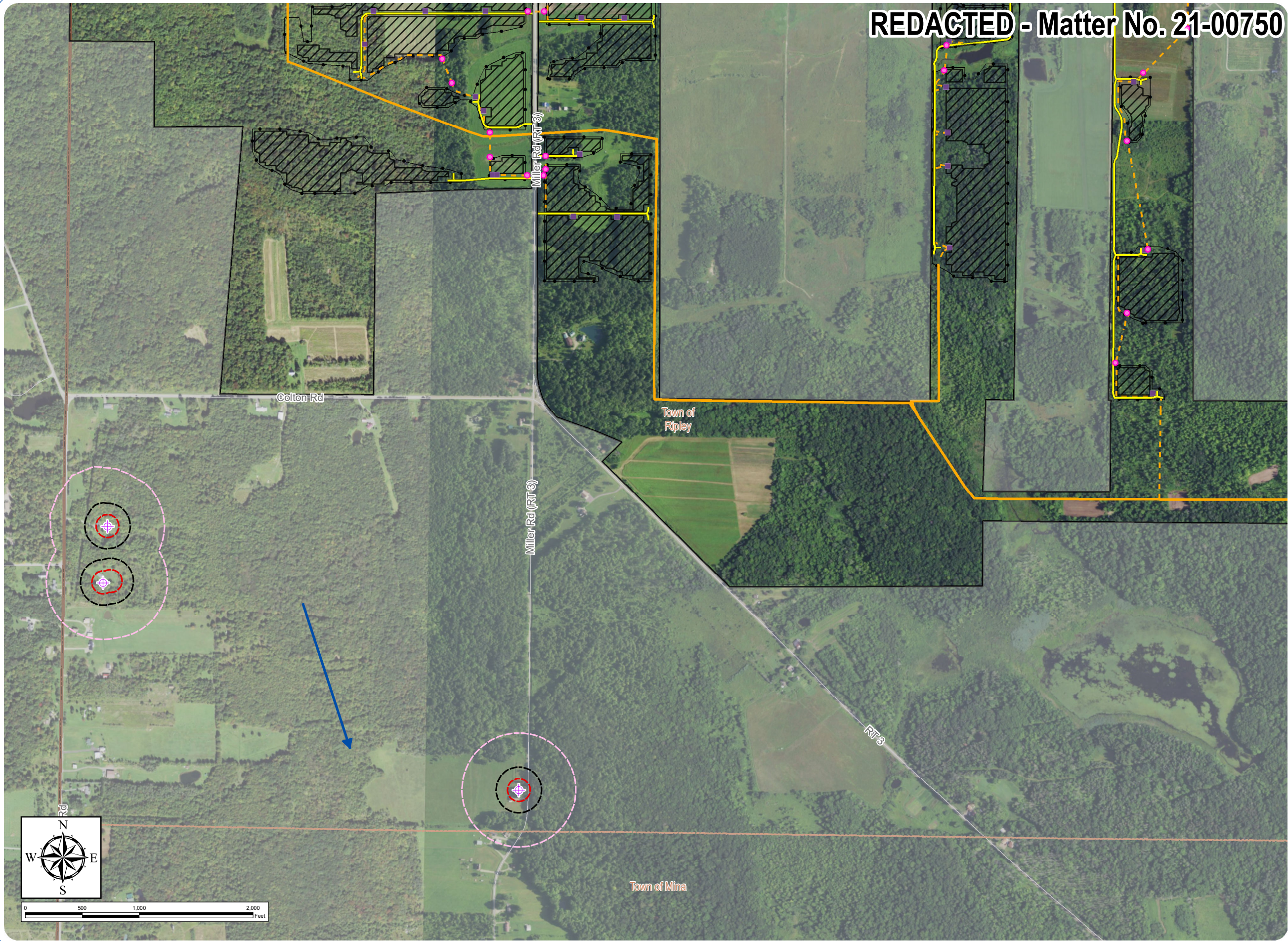
Figure S13-1: Groundwater Well Offsets

- Trenchless Installation Location
- Chautauqua County Water Resource - REDACTED
- NYSDEC-Mapped Water Well
- Private Well - REDACTED
- Groundwater Flow Direction
- Unconsolidated Aquifer
- Groundwater Well Offset 100 feet
- Groundwater Well Offset 200 feet
- Groundwater Well Offset 500 feet
- Facility Components
 - Access Road
 - Underground Collection Line
 - Overhead Collection Line
 - Inverter
 - PV Panel Area
 - Fenceline
 - Facility Site



Sheet 4 of 6

Notes: 1. Basemap: USDA NAIP "2019 New York 60cm" orthoimagery map service. 2. This map was generated in ArcMap on January 13, 2022. 3. This is a color graphic. Reproduction in grayscale may misrepresent the data.



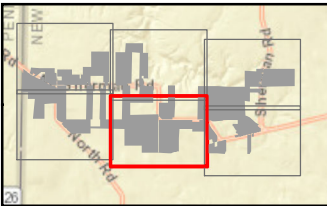
South Ripley Solar Project

Town of Ripley, Chautauqua County, New York

Section 94-c
Application Supplement
Matter No. 21-00750

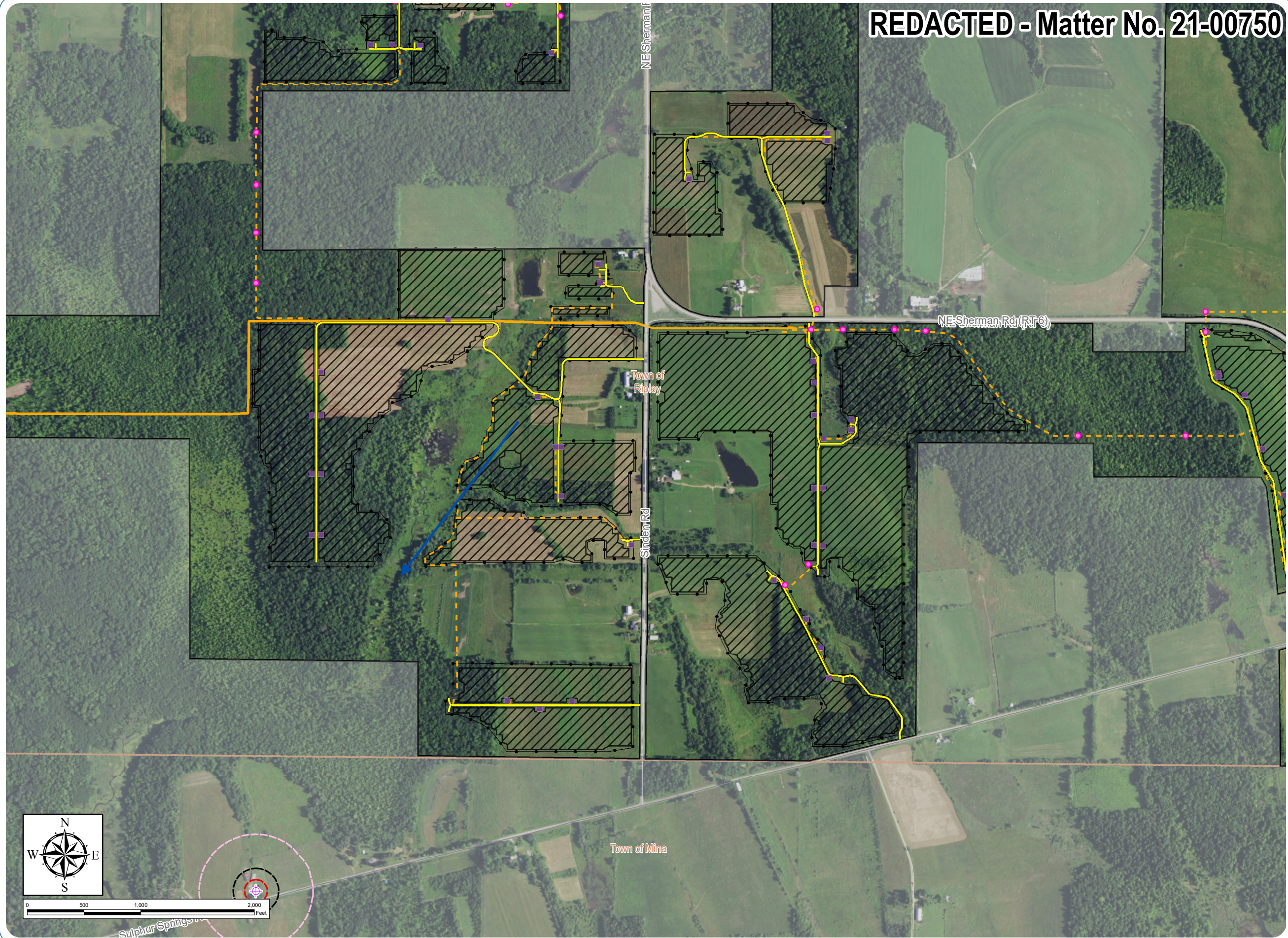
Figure S13-1: Groundwater Well Offsets

- Trenchless Installation Location
- Chautauqua County Water Resource - REDACTED
- NYSDEC-Mapped Water Well
- Private Well - REDACTED
- Groundwater Flow Direction
- Unconsolidated Aquifer
- Groundwater Well Offset 100 feet
- Groundwater Well Offset 200 feet
- Groundwater Well Offset 500 feet
- Facility Components
 - Access Road
 - Underground Collection Line
 - Overhead Collection Line
 - Inverter
 - PV Panel Area
 - Fenceline
 - Facility Site



Sheet 5 of 6

Notes: 1. Basemap: USDA NAIP "2019 New York 60cm" orthoimagery map service. 2. This map was generated in ArcMap on January 13, 2022. 3. This is a color graphic. Reproduction in grayscale may misrepresent the data.



South Ripley Solar Project

Town of Ripley, Chautauqua County, New York

Section 94-c
Application Supplement
Matter No. 21-00750

Figure S13-1: Groundwater Well Offsets

- Trenchless Installation Location
- Chautauqua County Water Resource - REDACTED
- NYSDEC-Mapped Water Well
- Private Well - REDACTED
- Groundwater Flow Direction
- Unconsolidated Aquifer
- Groundwater Well Offset 100 feet
- Groundwater Well Offset 200 feet
- Groundwater Well Offset 500 feet
- Facility Components
 - Access Road
 - Underground Collection Line
 - Overhead Collection Line
 - Inverter
 - PV Panel Area
 - Fenceline
 - Facility Site



Sheet 6 of 6

Notes: 1. Basemap: USDA NAIP "2019 New York 60cm" orthoimagery map service. 2. This map was generated in ArcMap on January 13, 2022. 3. This is a color graphic. Reproduction in grayscale may misrepresent the data.

