

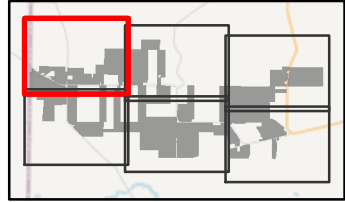
South Ripley Solar Project

Town of Ripley, Chautauqua County, New York

Section 94-c
Application Supplement
Matter No. 21-00750

Figure S11-1: Impacts to Plant Communities

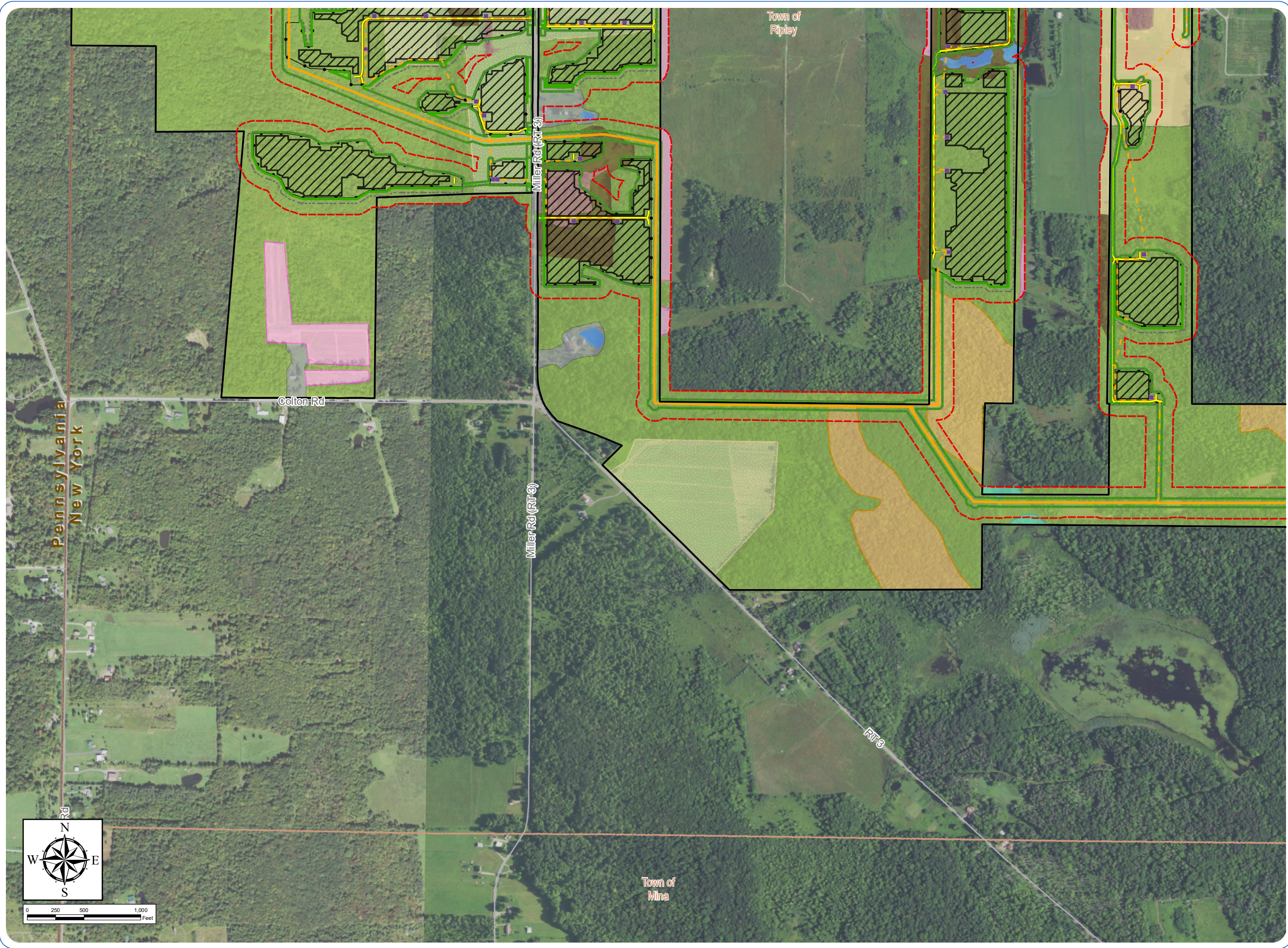
- Ecological Cover Type
- Developed/Disturbed
 - Pastureland
 - Field/Row Crop
 - Open Water
 - Shallow Emergent Marsh
 - Beech-Maple Mesic Forest
 - Hemlock-Northern Hardwood Forest
 - Successional Northern Hardwoods
 - Successional Shrubland
 - Successional Old Field
- Facility Components
- Access Road
 - Underground Collection Line
 - Overhead Collection Line
 - Inverter
 - Battery Energy Storage System
 - Collection Substation
 - POI Substation
 - PV Panel Area
 - Fenceline
 - Laydown Yard
 - Facility Site
 - Limit of Vegetation Management
 - Limit of Construction Activity
 - Plant Community Study Area



Sheet 1 of 6

Notes: 1. Basemap: USDA NAIP "2019 New York 60 cm" orthoimagery map service. 2. This map was generated in ArcMap on January 6, 2022. 3. This is a color graphic. Reproduction in grayscale may misrepresent the data.





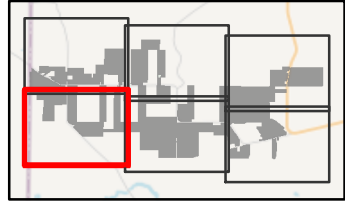
South Ripley Solar Project

Town of Ripley, Chautauqua County, New York

Section 94-c
Application Supplement
Matter No. 21-00750

Figure S11-1: Impacts to Plant Communities

- Ecological Cover Type
- Developed/Disturbed
 - Pastureland
 - Field/Row Crop
 - Open Water
 - Shallow Emergent Marsh
 - Beech-Maple Mesic Forest
 - Hemlock-Northern Hardwood Forest
 - Successional Northern Hardwoods
 - Successional Shrubland
 - Successional Old Field
- Facility Components
- Access Road
 - Underground Collection Line
 - Overhead Collection Line
 - Inverter
 - PV Panel Area
 - Fenceline
 - Facility Site
 - Limit of Vegetation Management
 - Limit of Construction Activity
 - Plant Community Study Area



Sheet 2 of 6

Notes: 1. Basemap: USDA NAIP "2019 New York 60 cm" orthoimagery map service. 2. This map was generated in ArcMap on January 6, 2022. 3. This is a color graphic. Reproduction in grayscale may misrepresent the data.



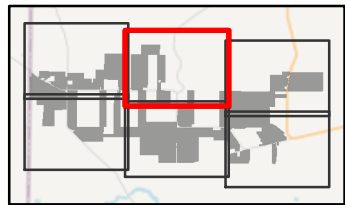
South Ripley Solar Project

Town of Ripley, Chautauqua County, New York

Section 94-c
Application Supplement
Matter No. 21-00750

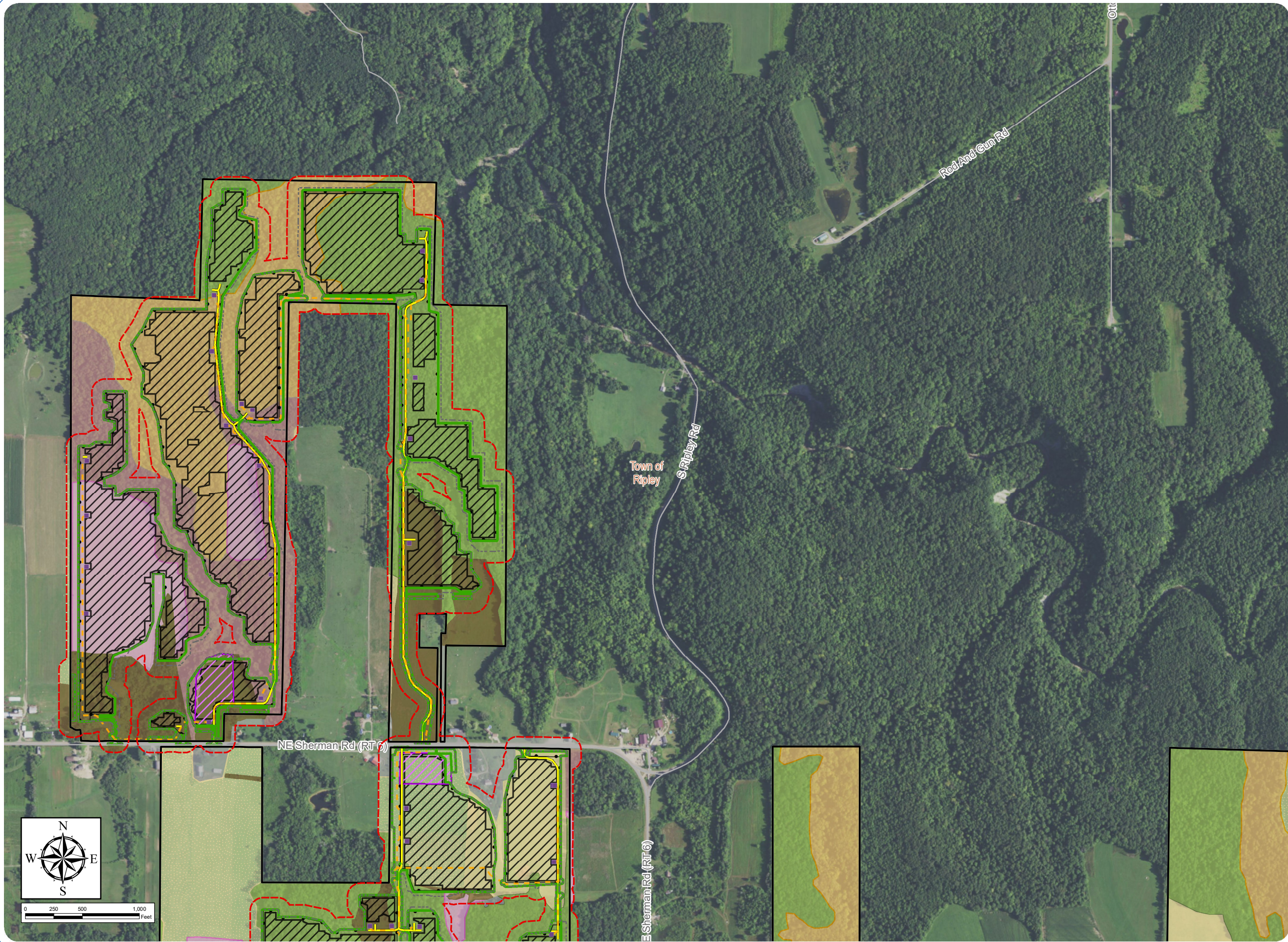
Figure S11-1: Impacts to Plant Communities

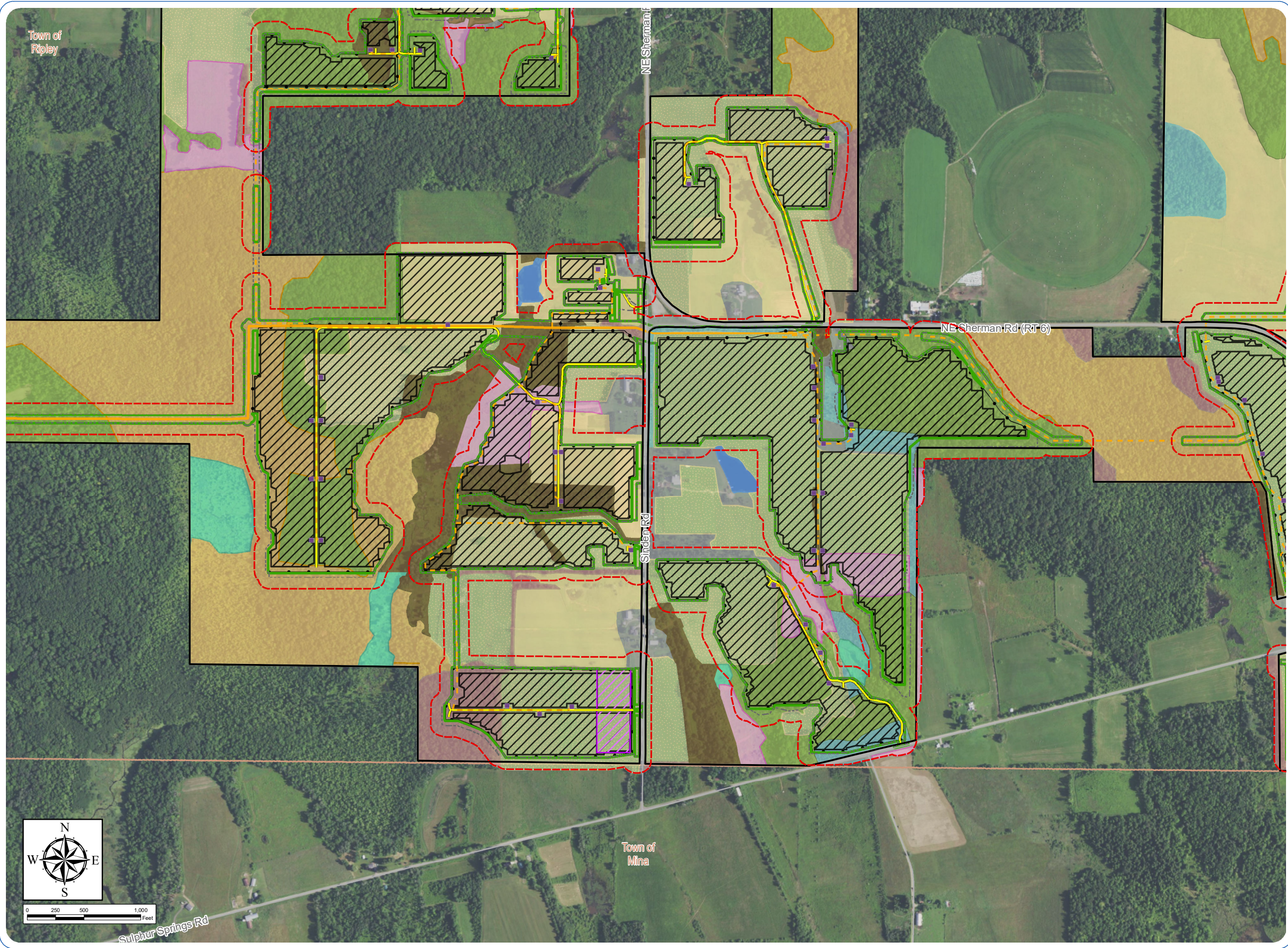
- Ecological Cover Type
- Developed/Disturbed
 - Pastureland
 - Field/Row Crop
 - Beech-Maple Mesic Forest
 - Hemlock-Northern Hardwood Forest
 - Successional Northern Hardwoods
 - Successional Shrubland
 - Successional Old Field
- Facility Components
- Access Road
 - Underground Collection Line
 - Inverter
 - PV Panel Area
 - Fenceline
 - Laydown Yard
 - Facility Site
 - Limit of Vegetation Management
 - Limit of Construction Activity
 - Plant Community Study Area



Sheet 3 of 6

Notes: 1. Basemap: USDA NAIP "2019 New York 60 cm" orthoimagery map service. 2. This map was generated in ArcMap on January 6, 2022. 3. This is a color graphic. Reproduction in grayscale may misrepresent the data.





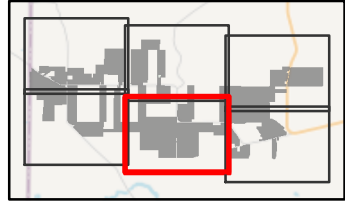
South Ripley Solar Project

Town of Ripley, Chautauqua County, New York

Section 94-c
Application Supplement
Matter No. 21-00750

Figure S11-1: Impacts to Plant Communities

- Ecological Cover Type
- Developed/Disturbed
 - Pastureland
 - Field/Row Crop
 - Pine Plantation
 - Open Water
 - Shallow Emergent Marsh
 - Beech-Maple Mesic Forest
 - Hemlock-Northern Hardwood Forest
 - Successional Northern Hardwoods
 - Successional Shrubland
 - Successional Old Field
- Facility Components
- Access Road
 - Underground Collection Line
 - Overhead Collection Line
 - Inverter
 - PV Panel Area
 - Fenceline
 - Laydown Yard
 - Facility Site
 - Limit of Vegetation Management
 - Limit of Construction Activity
 - Plant Community Study Area



Sheet 4 of 6

Notes: 1. Basemap: USDA NAIP "2019 New York 60 cm" orthoimagery map service. 2. This map was generated in ArcMap on January 6, 2022. 3. This is a color graphic. Reproduction in grayscale may misrepresent the data.



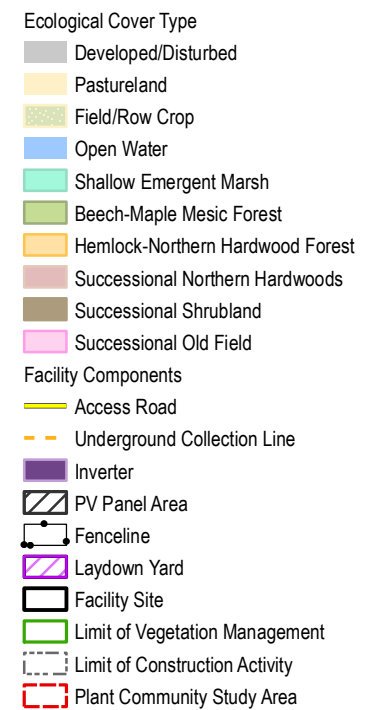
Town of
Ripley

South Ripley Solar Project

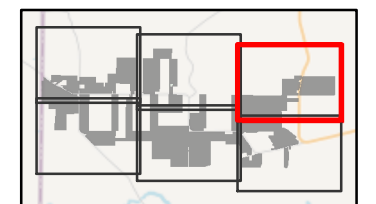
Town of Ripley, Chautauqua
County, New York

Section 94-c
Application Supplement
Matter No. 21-00750

**Figure S11-1: Impacts to
Plant Communities**



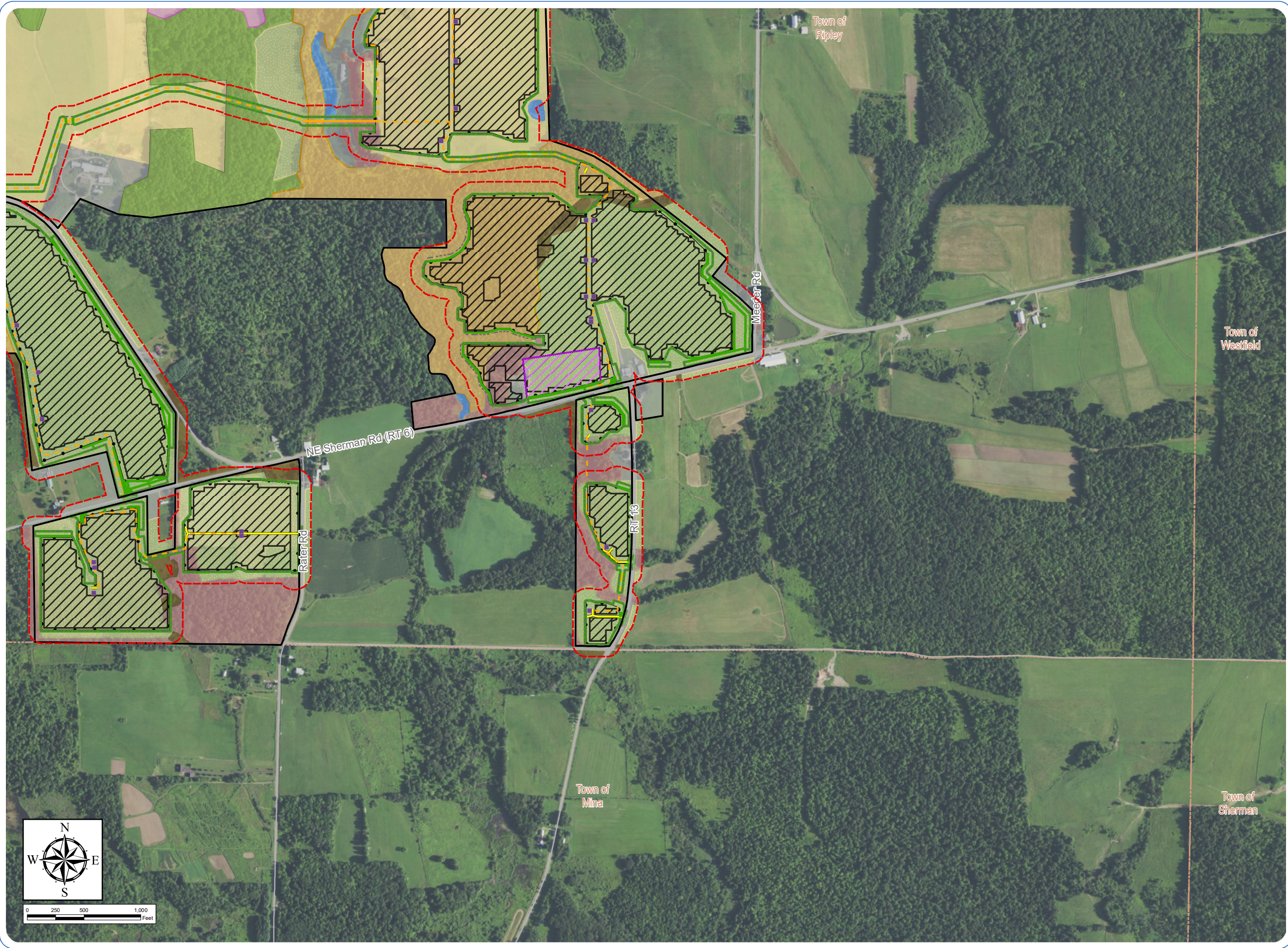
Town of
Westfield



Sheet 5 of 6

Notes: 1. Basemap: USDA NAIP "2019 New York 60 cm" orthoimagery map service. 2. This map was generated in ArcMap on January 6, 2022. 3. This is a color graphic. Reproduction in grayscale may misrepresent the data.





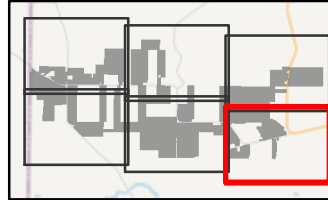
South Ripley Solar Project

Town of Ripley, Chautauqua County, New York

Section 94-c
Application Supplement
Matter No. 21-00750

Figure S11-1: Impacts to Plant Communities

- Ecological Cover Type
- Developed/Disturbed
 - Pastureland
 - Field/Row Crop
 - Open Water
 - Beech-Maple Mesic Forest
 - Hemlock-Northern Hardwood Forest
 - Successional Northern Hardwoods
 - Successional Shrubland
 - Successional Old Field
- Facility Components
- Access Road
 - Underground Collection Line
 - Overhead Collection Line
 - Inverter
 - PV Panel Area
 - Fenceline
 - Laydown Yard
 - Facility Site
 - Limit of Vegetation Management
 - Limit of Construction Activity
 - Plant Community Study Area



Sheet 6 of 6

Notes: 1. Basemap: USDA NAIP "2019 New York 60 cm" orthoimagery map service. 2. This map was generated in ArcMap on January 6, 2022. 3. This is a color graphic. Reproduction in grayscale may misrepresent the data.

