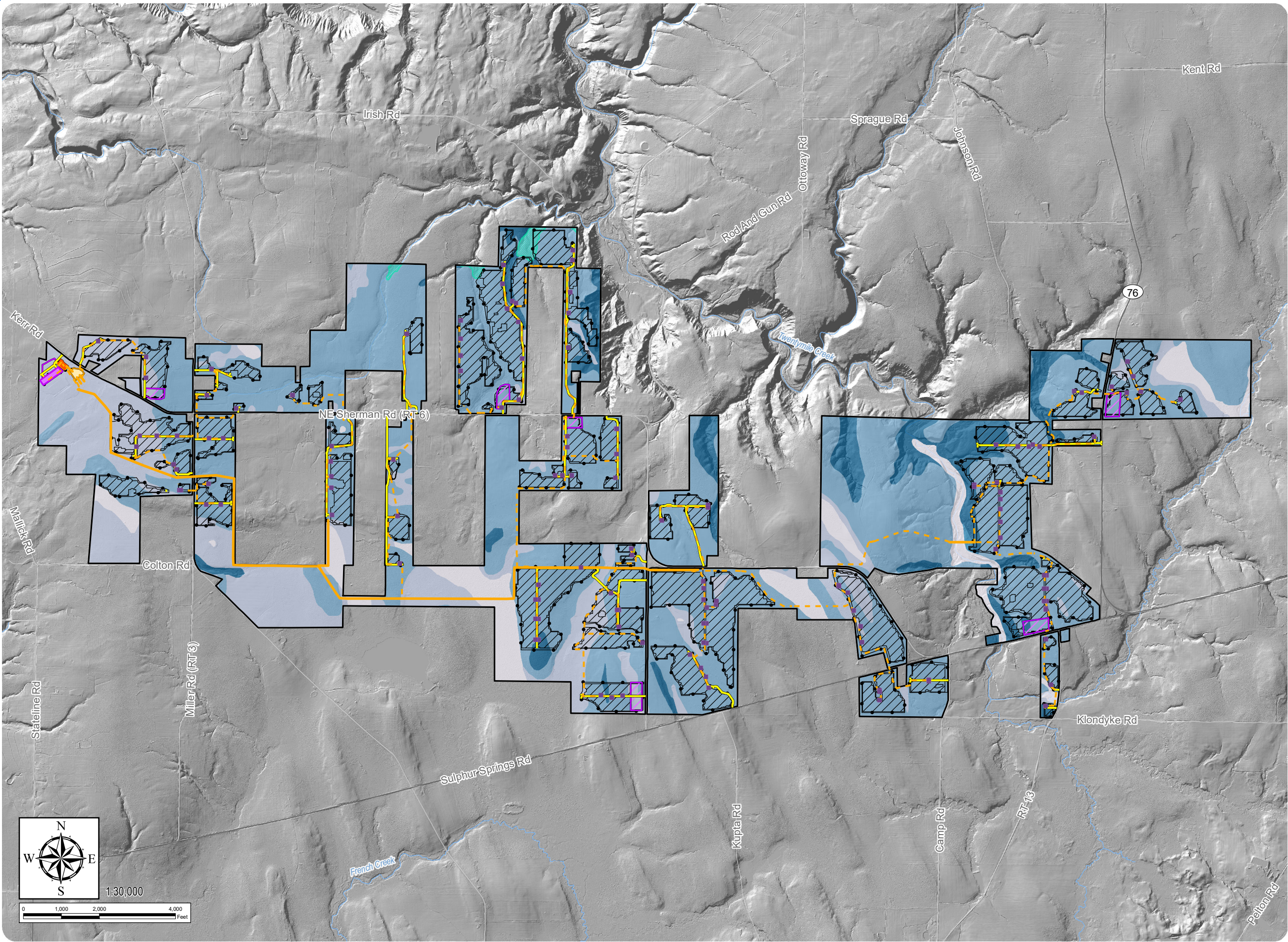


South Ripley Solar Project

Town of Ripley, Chautauqua County, New York

Section 94-c
Application Supplement
Matter No. 21-00750

Figure S10-4: Bedrock



- Mapped Depth to Bedrock
- 1-3 feet₂
- Mapped Depth to High Water Table
- 0 (At Ground Surface)
 - < 1 Foot
 - 1 - 3 Feet
 - 3 - 6 Feet
 - > 6 Feet
- Facility Components
- Access Road
 - Underground Collection Line
 - Overhead Collection Line
 - Inverter
 - Battery Energy Storage System
 - Collection Substation
 - POI Substation
 - PV Panel Area
 - Fenceline
 - Laydown Yard
 - Facility Site

Notes: 1. Basemap: Hillshade derived from 1-meter resolution Lidar data and 3-meter USGS DEM data. 2. Unless otherwise depicted, depth to bedrock is greater than 6 feet. 3. Geotechnical boring locations and results are described in the Appendix 10-A Geotechnical Investigation Report. 4. This map was generated in ArcMap on January 6, 2022. 5. This is a color graphic. Reproduction in grayscale may misrepresent the data.

