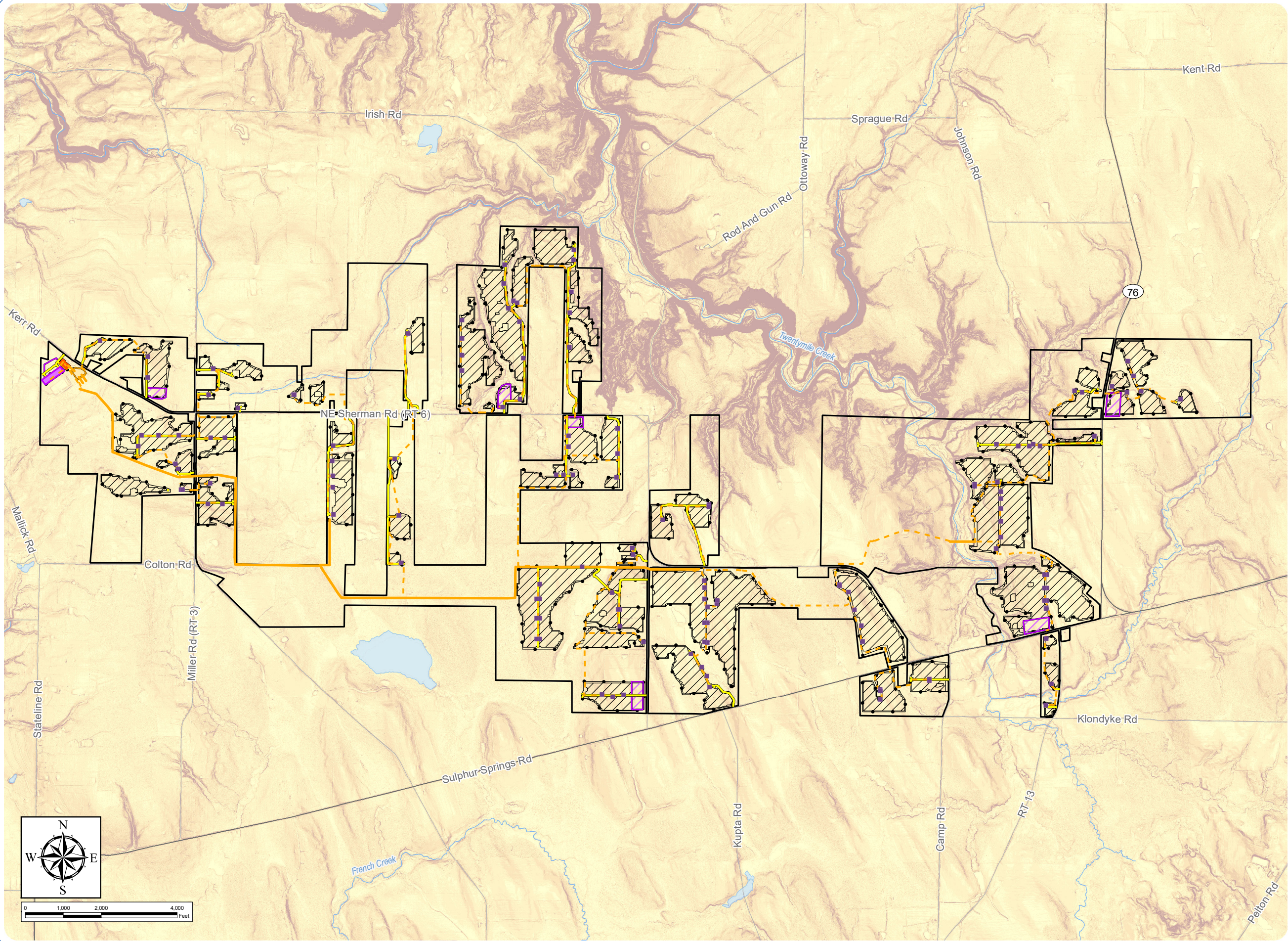


South Ripley Solar Project

Town of Ripley, Chautauqua County, New York

Section 94-c
Application Supplement
Matter No. 21-00750

Figure S10-1: Slopes



Slope

- 0-3%
- 3-8%
- 8-15%
- 15-25%
- 25-35%
- >35%

Facility Components

- Access Road
- Underground Collection Line
- Overhead Collection Line
- Inverter
- Battery Energy Storage System
- Collection Substation
- POI Substation
- PV Panel Area
- Fenceline
- Laydown Yard
- Facility Site

Notes: 1. Basemap: ESRI StreetMap North America, 2008. 2. Percent slope calculated from 1-meter NYS DEM data and 3-meter USGS DEM data. 3. This map was generated in ArcMap on January 6, 2022. 4. This is a color graphic. Reproduction in grayscale may misrepresent the data.

