

ATTACHMENT F

Stakeholder Outreach and Responses

- A. Pursuant to §900-2.9(4) of the Section 94-c regulations, the Applicant for the South Ripley Solar Project has conferred with municipal planning representatives, ORES, DPS, and OPRHP Regarding the identification of VSRs and representative viewpoints to be used in the development of visual simulations for inclusion in the Visual Impact Assessment (VIA). On May 5, 2020, a request for information regarding the identification of VSRs was distributed to the project stakeholders (see Attachment A for a distribution list of all representatives to whom this request was sent). This initial request included the following information:
1. A list of project stakeholders included in the outreach process,
 2. a map illustrating the preliminary Facility location and extent of the VSA,
 3. a map illustrating the location of VSRs identified by EDR,
 4. and a table listing the type, location, and extent of VSRs within the study area.
- B. On November 12, 2020, an additional request was provided to solicit feedback on potential viewpoints to be used in the production of visual simulations (see attachment A). This request included,
1. a summary of analyses conducted by the Applicant to date,
 2. a map illustrating the Facility components and the locations of viewpoints visited during field review and viewpoints selected by EDR for the development of visual simulations,
 3. a description and mapped location of LSZs, and
 4. photographs from viewpoints visited during field review with recommendations for visual simulations.
- C. On February 22, 2021, a meeting was held between the Applicant, EDR, and the Ripley Town Board to discuss the VIA and recommended simulation locations.

The Applicant has received a total of 40 comments from the Town of Ripley, the South Ripley Cemetery Association, and the DPS (see break-down below). Based on the stakeholder and agency consultation, a total of seven VSRs were added to the VIA, and eight additional viewpoints were selected for the development of visual simulations. The specific comments received and the Applicant's responses to these are summarized in the remainder of this attachment.

Comments and Responses

Municipal Planning Representatives

Town of Ripley Response to Outreach

1. **Comment:** *Enclosed photos TR01, TR02, TR03, TR04 are from the same location as existing VP 23. The viewpoint is located on State Route 76, which EDR refers to as "Sherman Rd." The directions these photos were taken are: TR01 – northwest, TR02 – west, TR03 – east, TR04, south. The Town believes these pictures provide a more expansive view that better captures how an observer would view the landscape (see photos in Figure 1 of this Attachment).*

Response: To provide a more expansive view of the landscape and the proposed Facility, a panorama simulation was produced from Viewpoint 24 at a location similar to that described in the comment. This simulation is included in VIA Attachment D.

2. **Comment:** *Enclosed photos TR05, TR06, and TR07 are from location VP 15, which is a cemetery view looking Northeast from Sherman Rd. Multiple project parcels should be visible from this viewpoint. Enclosed image TR05 looks north. Enclosed image TR06 looks west. Enclosed image TR07 looks northwest toward multiple farmland parcels, and Lake Erie can be seen along with Canada's shoreline on a clear day. The latitude and longitude for Picture 240 is 42.1948759, -79.7093464.*

Response: A second site visit was made on March 12, 2021 to capture additional viewpoints including the South Ripley Cemetery. The South Ripley Cemetery was also identified as Eligible for listing on the S/NRHP and was included in the VSR analysis. Additionally, a visual simulation was produced from the South Ripley Cemetery and is included in VIA Attachment D (Viewpoint 69).

3. **Comment:** *General Comment: Enclosed photos TR08, TR09, TR10, and TR11 are from a new sensitive viewpoint not proposed by EDR. South Ripley Methodist Church is located at 10008 NE Sherman Rd. between the Cemetery and S. Ripley Road. Pictures TR08, TR09, and TR10 look North, and TR11 looks Southwest at the cattle farm and forestland. The latitude and longitude for the church is 42.1952230, -79.7052359. Some of these viewpoints show the church, while others show the view from the church.*

Response: The South Ripley Methodist Church is included in the VSR analysis and a visual simulation was produced from this location and is included in VIA Attachment D (Viewpoint 69).

4. **Comment:** *Pictures TR12, TR13 are located at 42.2044284, -79.7019331, and demonstrate an additional publicly accessible sensitive viewpoint.*

Response: The bridge located on County Touring Route 9 (South Ripley Road) over Twentymile Creek was added to the VSR analysis. It was determined through the viewshed analysis that no visibility of the Facility was available from this location and therefore a visual simulation was not included.

5. **Comment:** *Picture TR14 is located at 42.1808659, -79.6585671, and demonstrates the point of view of a driver passing through the proposed area of solar panels.*

Response: Viewpoints 5, 15, 16, 40, 44, 56 were included in the visual simulations to represent the North East Sherman Road corridor. Combined with the panorama from viewpoint 24, State Route 76 (Sherman Road), this area has been represented and analyzed to both travelers in a car or stationary viewers.

6. **Comment:** *Picture TR15 is looking Northeast from the Firehall. There are 2 cattle farms with multiple hay and corn fields in view. The latitude and longitude of the fire hall is 42.1951258, -79.7267765.*

Response: The Firehall was added to the VSR analysis and was included as part of the second site visit on March 12. Viewpoint 51 was added to the analyses. However, it was determined that topography and vegetation substantially screen the project from this resource. A wireframe rendering was included in the VIA to represent potential visibility.

7. **Comment:** *Pictures TR16, TR17 are located on Irish Rd. at 42.2167541, -79.7448015. The images show north looking Views of Lake Erie and Canada within .0-1 miles from project area, as well as properties on the south side of Irish Rd. back the north side of northeast Sherman Road. This area has game land, forested land and is very residential and includes grape vineyards.*

Response: A second site visit was made on March 12, 2021 to capture additional viewpoints including the above referenced location. This location is approximately one mile from any Project component. Attachment B of the VIA contains a photo log of viewpoint photographs. Viewpoint 67 was taken proximate to this location. Additionally, the Chautauqua County Reforestation Land and the Irish Road Sportsman's Club were also added to the VSR analysis.

8. **Comment:** *As an additional sensitive visual receptor and potentially representative viewpoint, the Town proposes including the Ripley Rod and Gun Club, which adjoins the project area. The latitude and longitude for the club is 42.2072029, -79.6975470. The club was not able to provide a representative picture due to inclement weather.*

Response: The Rod and Gun Club was added to the VSR analysis and a photograph was capture from this location on a subsequent site visit. Attachment B of the VIA contains a photo log of viewpoint photographs. Viewpoint 77 was taken proximate to this location.

9. **Comment:** *Finally, VP 15 is not properly identified as a cemetery on the VIA maps.*

Response: Viewpoint 15 is from County Route 6 adjacent to the South Ripley Cemetery entrance. In order to better represent views from the cemetery, A second site visit was made on March 12, 2021 to capture additional viewpoints including the South Ripley Cemetery. A visual simulation was produced from the South Ripley Cemetery and is included in VIA Attachment D (Viewpoint 69).

10. **Comment:** *I have attached a copy of a note and map a community member left on my desk. It is hard to see on the attached map but the arrow is pointing to a large pond. I think it would be a good idea to list such a large pond as a Visually Sensitive Resource. The front half of the pond*
-

is situated on 142-acre hunting camp owned by Hound Dog Rod and Gun Club out of the Buffalo area. The back half of the pond has been in the Purdue family for several generations.

Response: The unnamed pond was added to the VSR analysis.

Ripley Town Board Meeting.

1. **Comment:** *Include visual simulations from South Ripley Four-Corners (NE Sherman Road and County Route 3).*

Response: A visual simulation was produced from this location and is included in VIA Attachment D (Viewpoint 5).

2. **Comment:** *Include visual simulations of the substation and Battery Energy Storage System.*

Response: A representative visual simulation was produced to illustrate the visual effects associated with the BESS and Collection Substation. These are included in the VIA Attachment D (Viewpoints 59 and 63S and 63SE).

3. **Comment:** *Add road names to mapping.*

Response: Maps included in the VIA include appropriate road names, where possible.

4. **Comment:** *Provide sequence of photos along roadways.*

Response: Viewpoints 5, 15, 16, 40, 44, 56 provide sequential viewing along Northeast Sherman Road. These are included in the VIA Attachment D.

5. **Comment:** *Provide visual simulation from the south of the intersection of Camp Road and Mina Road.*

Response: A visual simulation was produced from this location and is included in VIA Attachment D (Viewpoint 75).

6. **Comment:** *Provide analysis in regard to the routes that tourists may take through the VSA and experience the Facility from.*

Response: An analysis was completed to determine the traffic counts at major connector roads occurring within the VSA. While it is not possible to determine the intent or activity of these travelers, it is anticipated that some portion of them could be tourists. As such, this user group has been included in the VIA and represented in a subset of the visual simulations.

7. **Comment:** *Provide analysis from the Chautauqua County Reforestation Lands at the end of Irish Road.*

Response: A second site visit was made on March 12, 2021 to capture additional viewpoints including the above referenced location. This location is approximately one mile from any Project component. Attachment B of the VIA contains a photo log of viewpoint photographs. Viewpoint 67 was taken proximate to this location. Additionally, the Chautauqua County Reforestation Land and the Irish Road Sportsman's Club were also added to the VSR analysis.

8. **Comment:** *Provide additional photography from the Firehall.*
-

Response: The Ripley Volunteer Fire Department was added to the VSR analysis and VIA report. Additionally, a visual simulation was produced from this location in order to illustrate the appearance of the Facility. The simulation (Viewpoint 51) determined that the Facility would be minimally visible from this location and a wireframe overlay was included in the VIA to describe this condition.

South Ripley Cemetery Association

1. **Comment:** *The South Ripley Cemetery is located on County Road #6, (42.19 N, 79.71 W) and is entirely imbedded within the proposed Facility Area. The cemetery board and volunteers have worked hard to preserve and conserve the cemetery and it is a significant part of our community's culture and heritage. Our loved ones are memorialized at a peaceful resting place which provides beautiful views of the surrounding rolling hills and Lake Erie sunsets. We ask that our historic cemetery be included in your table of significant Visually Sensitive Resources.*

Response: A second site visit was made on March 12, 2021 to capture additional viewpoints including the South Ripley Cemetery. The South Ripley Cemetery was also identified as Eligible for listing on the S/NRHP and was included in the VSR analysis. Additionally, a visual simulation was produced from the South Ripley Cemetery and is included in VIA Attachment D (Viewpoint 69).

New York State Office of Parks, Recreation, and Historic Preservation (OPRHP)

No comments received.

New York State Department of Public Service

DPS staff advises that the following locations should be added as visually sensitive resources:

Comment: Public Lands and Recreational Resources

1. Gillard Rowing Center (Mercyhurst University – rowing team) - Findley Lake, NY 14736
2. Ripley Community Park, Park Avenue, Ripley NY
3. The Yorker Museum, Park Street, Sherman, NY 14781
4. Brushwood Folklore Center, 8881 Bailey Hill Rd, Sherman, NY 14781

Response: Based on the 94-C regulations, the VSA is 2-mile radius around the Facility Site. Therefore, these sites are not considered in the analysis.

Comment: High Use Public Areas

DPS Staff notes that the New York State Department of Transportation provides an Official Description of Highway Touring Routes, Scenic Byways and Bicycle Routes in New York State.

<https://www.dot.ny.gov/divisions/operating/oom/transportation-systems/repository/2017%240tour-bk.pdf>

The Routes listed in the Visual Study are all listed in this publication.

1. NY-17 (Should be added to the list of roads even though it shares the route with I-86)
2. US 20 is listed in the study but should be noted as a Historic Route
<https://www.historicus20.com/index.html>

Response: Based on the 94-C regulations, the VSA is 2-mile radius around the Facility Site. Therefore, US Route 20 is not considered in the analysis. Within the VSR analysis Interstate Route 86 naming was updated to include NY-17, Interstate 86/NYS Route 17.

Comment: Additional Resources

1. Quincy Rural Cemetery – There is one famous grave of a US Congressman
2. East Ripley Cemetery – There are two famous graves; one US Congressman and one Civil War Congressional Medal of Honor recipient.
3. Sherman Cemetery

Response: Based on the 94-C regulations, the VSA is 2-mile radius around the Facility Site. Therefore, these sites are not considered in the analysis.

Comment: *DPS staff advises that the five-mile study area should continue into Pennsylvania to ensure that visually sensitive resources are properly addressed. The following are resources to be considered in Pennsylvania:*

Response: Based on the 94-C regulations, the VSA is 2-mile radius around the Facility Site. Therefore, these sites are not considered in the analysis.

Comment: Properties of Historic Significance

1. (NRHP) Short's Hotel – 90 S Pearl St, North East, PA 16428
2. (NRHP) North East Historic District – 21-1 N Pearl St, North East, PA 16428
"North East Historic District is a national historic district located at North East, Erie County, Pennsylvania. It includes 114 contributing buildings in the central business district and surrounding residential areas of North East. The district includes commercial, residential, institutional, and religious buildings. The buildings were built from the mid-19th to early-20th century and are in a variety of popular architectural styles including Greek Revival, Queen Anne, and Italianate. Located at the center of the district is Gibson Park. Notable non-residential buildings include commercial buildings along East and West Main Street and South Lake Street, the Concord Hotel, the Crescent Hose Company, Baptist Church, Presbyterian Church, and Methodist Church, two main buildings of St. Mary's Seminary, McCord Memorial Library (1916), and Heard Memorial School."
https://en.wikipedia.org/wiki/North_East_Historic_District

Response: Based on the 94-C Regulations, visual resources in Pennsylvania are not considered the in the VIA. Furthermore, resources within Northeast, Pennsylvania are beyond the 2-mile VSA established for the Facility.

Comment: Designated Scenic Resources

1. Seaway Trail – National Scenic Byway – PA
-

Response: Based on the 94-C Regulations, visual resources in Pennsylvania are not considered in the VIA. Additionally, resources within Northeast, Pennsylvania are beyond the 2-mile VSA established for the Facility.

Comment: High Use Public Areas

1. North East Central School District
2. Mercyhurst University School of Health
3. NYS Bike Route 517 – Connects to Pennsylvania Bike Route Z – (These bike routes are part of the Northern Tier / US-30 Bike Route <https://www.adventurecycling.org/routes-and-maps/adventure-cycling-route-network/northern-tier/>)
 - a. <https://www.penndot.gov/TravelInPA/RideaBike/Pages/Pennsylvania-Bicycle-Routes.aspx>
 - b. <https://www.penndot.gov/pages/all-news-details.aspx?newsid=507>

Response: Based on the 94-C Regulations, visual resources in Pennsylvania are not considered in the VIA. Additionally, resources within Northeast, Pennsylvania are beyond the 2-mile VSA established for the Facility. The referenced bike route within New York is outside the 2-mile VSA and therefore it is anticipated that visual effects to this resources will be insignificant.

Comment: Public Lands and Recreational Resources

1. Howard Eaton Reservoir (boat launches, fishing, multi-use public trail, picnic areas) <https://greenfieldtownship.info/howard-eaton-reservoir-bulls-dam/>
2. Gibson Park

Additional Resources

1. Lake View Country Club - 8351 Station Road, North East, PA 16428
2. Beach Glass Estates on Lake Erie (The Old St. Barnabas House) North East, PA

Response: Based on the 94-C Regulations, visual resources in Pennsylvania are not considered in the VIA. Additionally, resources within Northeast, Pennsylvania are beyond the 2-mile VSA established for the Facility.

Comment: Additional Comments

1. *It is not clear from the viewshed and viewpoints mapping provided in your documentation, the proposed location of the facility substation, point-of-interconnection, or energy storage facility are not evident. The VIA should address visibility of those facility components, and represent in photosimulation(s) with and without landscape screening, as appropriate.*

Response: A representative visual simulation was produced to illustrate the visual effects associated with the BESS and Collection Substation. These are included in the VIA Attachment D (Viewpoints 59 and 63S and 63SE).

2. *The final viewpoints selection should consider representation of locations noted as NRHP-listed or -eligible, including those identified as recommended for eligibility in the project*
-

surveys for historic properties. Also, any specific recommendations by SHPO should be addressed in viewpoint selection.

Response: No NRHP listed sites have been identified within the VSA and no specific recommendations by OPRHP were made. Two S/NRHP eligible sites were provided by OPRHP as a part of the Historic Resources Survey (Appendix 9-D to the Section 94-c Application) and were included in the VSR analysis, and viewpoints were taken as part of the second site visit on March 12. Viewpoint 69 was developed as a visual simulation to represent one the two S/NRHP eligible sites within the VSA. This simulation in included in the VIA Attachment D.

From: [Sammons, Marcy \(DPS\)](#)
To: [Matthew Robinson](#); [Davis, Andrew \(DPS\)](#)
Cc: [William Whipps](#)
Subject: RE: 19020 - Case No. 19-F-0560 South Ripley Solar Visual Outreach
Date: Monday, July 20, 2020 11:12:27 AM
Attachments: [19-F-0560_SouthRipley_VisualSurveyComments-DPS_Staff.pdf](#)

[EXTERNAL SENDER]

Good morning, Matthew,

Please find attached, a copy of the South Ripley Solar (Case No. 19-F-0560) visual outreach comments that Andy Davis and I compiled. Please let us know if there is any further information that you may need regarding this project.

Best Regards,
Marcy

Marcy Sammons, RLA
Environmental Certification & Compliance Section

Department of Public Service

3 Empire State Plaza, Albany, NY 12223
t (518) 486-2941 | f (518) 486-5026 | marcy.sammons@dps.ny.gov
www.dps.ny.gov

Please find attached the comments that Andy and I put together.

From: Matthew Robinson <mrobinson@edrdpc.com>
Sent: Tuesday, July 7, 2020 9:16 AM
To: Sammons, Marcy (DPS) <Marcy.Sammons@dps.ny.gov>; Davis, Andrew (DPS) <Andrew.Davis@dps.ny.gov>
Cc: William Whipps <wwhipps@edrdpc.com>
Subject: RE: 19020 - Case No. 19-F-0560 South Ripley Solar Visual Outreach

ATTENTION: This email came from an external source. Do not open attachments or click on links from unknown senders or unexpected emails.

Macy –

Thanks for the quick response and yes the 21st would be great.

I am sorry about the mis up with not getting a letter, we have received responses from local stakeholders so the letters did get out.

That being said I will see if anything happened to make sure you continue to get correspondence, and of course if I don't get anything from you I will probably be reaching out just like this time.

Best,

- Matthew -

Matthew Robinson

Visualization Project Manager

Environmental Design & Research,
Landscape Architecture, Engineering & Environmental Services, D.P.C.
217 Montgomery Street, Suite 1000, Syracuse, New York 13202
P. 315.471.0688 ext. 656 | C. 802.343.8170
www.edrdpc.com

EDR is a certified Woman Owned Business. Ask us about our [federal and state certifications](#).
Check out what we're up to on [Facebook](#) and [LinkedIn](#).

From: Sammons, Marcy (DPS) <Marcy.Sammons@dps.ny.gov>
Sent: Monday, July 6, 2020 3:27 PM
To: Matthew Robinson <mrobinson@edrdpc.com>; Davis, Andrew (DPS) <Andrew.Davis@dps.ny.gov>
Cc: William Whipps <wwhipps@edrdpc.com>
Subject: RE: 19020 - Case No. 19-F-0560 South Ripley Solar Visual Outreach

[EXTERNAL SENDER]

Good afternoon, Matt,

Andy and I checked our files and have no record of any May correspondence from you. We will review the file you attached and plan to have comments for you by July 21st in light of this situation. Please let me know if you have any concerns regarding this time frame.

Thanks,
Marcy

Marcy Sammons, RLA
Environmental Certification & Compliance Section

Department of Public Service

3 Empire State Plaza, Albany, NY 12223
t (518) 486-2941 | f (518) 486-5026 | marcy.sammons@dps.ny.gov
www.dps.ny.gov

From: Matthew Robinson <mrobinson@edrdpc.com>
Sent: Monday, July 6, 2020 11:35 AM
To: Davis, Andrew (DPS) <Andrew.Davis@dps.ny.gov>
Cc: Sammons, Marcy (DPS) <Marcy.Sammons@dps.ny.gov>; William Whipps <wwhipps@edrdpc.com>
Subject: 19020 - Case No. 19-F-0560 South Ripley Solar Visual Outreach

ATTENTION: This email came from an external source. Do not open attachments or click on links from

Andy –

Hope your summer is progressing as well as can be, we are still moving right along here in case.

I am writing to check in on the Visually Sensitive Resource Outreach Letter for Case No. 19-F-0560 South Ripley Solar, that we sent out in May. I have not received a response from you or your team and wanted to make sure that you did in fact receive the correspondence and if you do plan to respond.

I have attached the outreach letter and figures in case there was some mix up.

Thanks Andy,

Best,

- Matthew -

Matthew Robinson

Visualization Project Manager

Environmental Design & Research,
Landscape Architecture, Engineering & Environmental Services, D.P.C.
217 Montgomery Street, Suite 1000, Syracuse, New York 13202
P. 315.471.0688 ext. 656 | C. 802.343.8170
www.edrdpc.com

EDR is a certified Woman Owned Business. Ask us about our [federal and state certifications](#).
Check out what we're up to on [Facebook](#) and [LinkedIn](#).

19-F-0560 South Ripley Energy Center
Visual Impact Survey Request
DPS Comments
July 6, 2020

DPS staff advises that the following locations should be added as visually sensitive resources:

Public Lands and Recreational Resources

1. Gillard Rowing Center (Mercyhurst University – rowing team) - Findley Lake, NY 14736
2. Ripley Community Park, Park Avenue, Ripley NY
3. The Yorker Museum, Park Street, Sherman, NY 14781
4. Brushwood Folklore Center, 8881 Bailey Hill Rd, Sherman, NY 14781

High Use Public Areas

DPS Staff notes that the New York State Department of Transportation provides an Official Description of Highway Touring Routes, Scenic Byways and Bicycle Routes in New York State.

<https://www.dot.ny.gov/divisions/operating/oom/transportation-systems/repository/2017%240tour-bk.pdf>

The Routes listed in the Visual Study are all listed in this publication.

1. NY-17 (Should be added to the list of roads even though it shares the route with I-86)
2. US 20 is listed in the study but should be noted as a Historic Route
<https://www.historicus20.com/index.html>

Additional Resources

1. Quincy Rural Cemetery – There is one famous grave of a US Congressman
2. East Ripley Cemetery – There are two famous graves; one US Congressman and one Civil War Congressional Medal of Honor recipient.
3. Sherman Cemetery

DPS staff advises that the five-mile study area should continue into Pennsylvania to ensure that visually sensitive resources are properly addressed. The following are resources to be considered in Pennsylvania:

Properties of Historic Significance

1. (NRHP) Short's Hotel – 90 S Pearl St, North East, PA 16428
2. (NRHP) North East Historic District – 21-1 N Pearl St, North East, PA 16428
"North East Historic District is a national historic district located at North East, Erie County, Pennsylvania. It includes 114 contributing buildings in the central business district and surrounding residential areas of North East. The district includes commercial, residential, institutional, and religious buildings. The buildings were built from the mid-19th to early-20th century and are in a variety of popular architectural styles including Greek Revival, Queen Anne, and Italianate. Located at the center of the district is Gibson Park. Notable non-residential buildings include commercial buildings along East and West Main Street and South Lake Street,

the Concord Hotel, the Crescent Hose Company, Baptist Church, Presbyterian Church, and Methodist Church, two main buildings of St. Mary's Seminary, McCord Memorial Library (1916), and Heard Memorial School.” https://en.wikipedia.org/wiki/North_East_Historic_District

Designated Scenic Resources

1. Seaway Trail – National Scenic Byway - PA

High Use Public Areas

1. North East Central School District
2. Mercyhurst University School of Health
3. NYS Bike Route 517 – Connects to Pennsylvania Bike Route Z – (These bike routes are part of the Northern Tier / US-30 Bike Route <https://www.adventurecycling.org/routes-and-maps/adventure-cycling-route-network/northern-tier/>)
 - a. <https://www.penndot.gov/TravelInPA/RideaBike/Pages/Pennsylvania-Bicycle-Routes.aspx>
 - b. <https://www.penndot.gov/pages/all-news-details.aspx?newsid=507>

Public Lands and Recreational Resources

1. Howard Eaton Reservoir (boat launches, fishing, multi-use public trail, picnic areas) <https://greenfieldtownship.info/howard-eaton-reservoir-bulls-dam/>
2. Gibson Park

Additional Resources

1. Lake View Country Club - 8351 Station Road, North East, PA 16428
2. Beach Glass Estates on Lake Erie (The Old St. Barnabas House) North East, PA

From: [Davis, Andrew \(DPS\)](#)
To: [Matthew Robinson](#)
Cc: [Sammons, Marcy \(DPS\)](#)
Subject: RE: 19020 - South Ripley Solar Project Case 19-F-0560
Date: Friday, February 26, 2021 10:16:29 AM

[EXTERNAL SENDER]

Matt – DPS previously provided recommendations for visual receptor consideration. Based on review of the more recent viewpoints selection recommendations you provided, please note the following comments.

It is not clear from the viewshed and viewpoints mapping provided in your documentation, the proposed location of the facility substation, point-of-interconnection, or energy storage facility are not evident. The VIA should address visibility of those facility components, and represent in photosimulation(s) with and without landscape screening, as appropriate.

The final viewpoints selection should consider representation of locations noted as NRHP-listed or -eligible, including those identified as recommended for eligibility in the project surveys for historic properties. Also, any specific recommendations by SHPO should be addressed in viewpoint selection.

I hope these comments are helpful in developing the VIA for this project.

Respectfully,
ACDavis
NYS DPS

From: Matthew Robinson <mrobinson@edrdpc.com>
Sent: Thursday, February 25, 2021 12:13 PM
To: Davis, Andrew (DPS) <Andrew.Davis@dps.ny.gov>; Sammons, Marcy (DPS) <Marcy.Sammons@dps.ny.gov>
Subject: 19020 - South Ripley Solar Project

ATTENTION: This email came from an external source. Do not open attachments or click on links from unknown senders or unexpected emails.

Andy and Marcy –

I hope this winter finds you well. We have been having a great ski season so far and I have been out enjoying the great powder.

I want to follow up and see if you ever received the attached letter regarding the Recommended Viewpoint outreach for the South Ripley Solar Project. I am realizing that I did not get a response from your team and am guessing that you did not receive the info.

Please find the information needed.

Sorry for any confusion.

Best,

- Matthew -

Matthew Robinson

EDR Visualization Project Manager

217 Montgomery Street, Suite 1100, Syracuse, New York 13202

O: 315.471.0688 x656 M: 802.343.8170 www.edrdpc.com

EDR a **better** environment

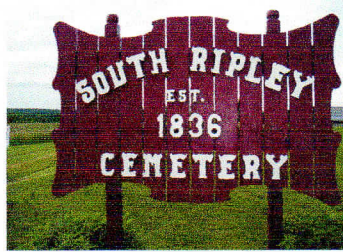
From: piryan@fairpoint.net
To: [Matthew Robinson](#)
Subject: Response Letter from South Ripley cemetery
Date: Thursday, June 11, 2020 3:39:01 PM
Attachments: [EDR Response Letter 11June2020.pdf](#)

[EXTERNAL SENDER]

Dear Mr. Robinson,

Please see the attached response letter from South Ripley Cemetery.

Thank you, Peter Ryan, President, South Ripley Cemetery Association



South Ripley Cemetery Association
4855 South Ripley Rd.
Ripley, NY 14775

11 June 2020

Environmental Design & Research
Attn : Matthew Robinson
217 Montgomery St., Ste. 100
Syracuse, NY 13202

Dear Mr. Robinson,

Subject: South Ripley Solar & Storage Proposal, Case # 19-F-0560

Thank you for sending your Identification of Visually Sensitive Resources communication dated May 20, 2020. This letter is a response to that communication.

The South Ripley Cemetery is located on County Road #6, (42.19 N, 79.71 W) and is entirely imbedded within the proposed Facility Area. The cemetery board and volunteers have worked hard to preserve and conserve the cemetery and it is a significant part of our community's culture and heritage. Our loved ones are memorialized at a peaceful resting place which provides beautiful views of the surrounding rolling hills and Lake Erie sunsets.

We ask that our historic cemetery be included in your table of significant Visually Sensitive Resources.

If any questions or to discuss this, I can be reached at 716.252.6542 or via email at pjryan@fairpoint.net.

Sincerely,

A handwritten signature in black ink, appearing to read "Peter Ryan".

Peter Ryan, South Ripley Cemetery Board President

From: [Dr. John P. Hamels](#)
To: [Matthew Robinson](#)
Subject: South Ripley Solar Project
Date: Thursday, May 28, 2020 9:56:31 AM

[EXTERNAL SENDER]

Dear Mr. Robinson,

For your records, please note that George Davis is no longer Town Historian. I was appointed January 2020. I am in receipt of documentation regarding "Identification of Visually Sensitive Resources".

Thank you

Dr. John P. Hamels, Historian

Town of Ripley

Sent from my iPhone

From: ripleyts@fairpoint.net
To: [Matthew Robinson](#)
Cc: ["Barb & John Hamels"; Michael Rowe](#)
Subject: South Ripley Solar Project
Date: Thursday, May 28, 2020 7:18:22 PM
Attachments: [28May2020 Doc's Note.pdf](#)

[EXTERNAL SENDER]

Hi Mr. Robinson,

I have attached a copy of a note and map a community member left on my desk. It is hard to see on the attached map but the arrow is pointing to a large pond. I think it would be a good idea to list such a large pond as a Visually Sensitive Resource. The front half of the pond is situated on 142 acre hunting camp owned by Hound Dog Rod and Gun Club out of the Buffalo area. The back half of the pond has been in the Purdue family for several generations. If you have any questions please let me know.

Thank You
Douglas Bowen
Ripley Town Supervisor

5/28/20

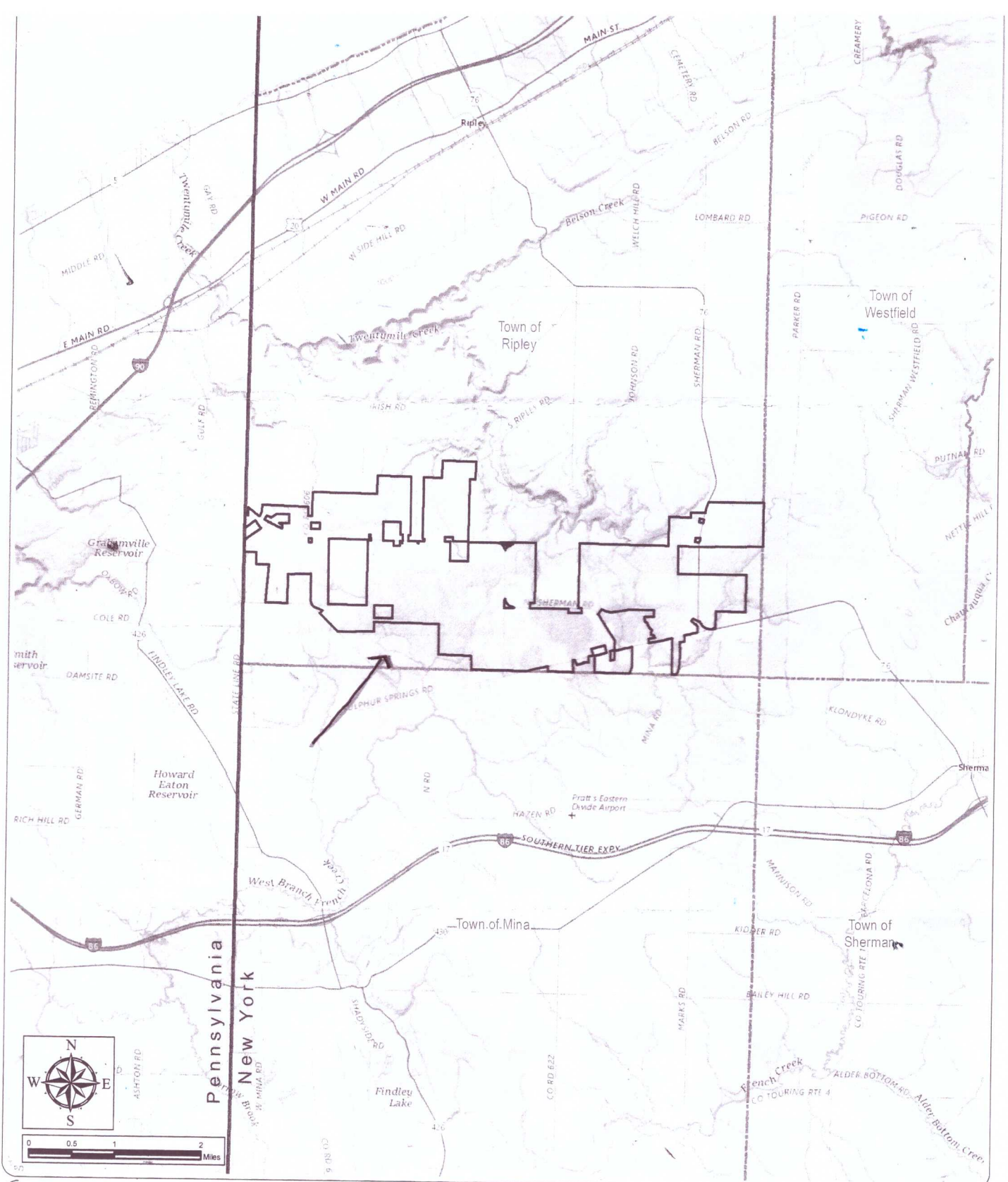
Doug —

I reviewed the documentation from Environmental Design + Research requesting any notes on visual sensitive places within the area of the Solar Project in South Nisley.

After looking at the map, there is a rather large water body just south west of the project off of North Road + Sulphur Springs. It's not listed in the report + it is unnamed on maps that I checked. Should this be listed with "Lakes, Ponds + Reservoirs"?

I've indicated it with an arrow on attached map.

Doug



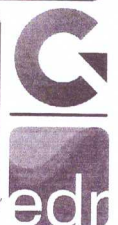
South Ripley Solar Project

Town of Ripley, Chautauqua County, New York
Visual Outreach - Case No. 19-F-0560

Figure 1: Facility Location

Notes: 1. Basemap: ESRI ArcGIS Online "USGS Topo" map service.
2. This map was generated in ArcMap on April 29, 2020. 3. This is a color graphic. Reproduction in grayscale may misrepresent the data.

-  Facility Area
-  Town Boundary
-  State Boundary



From: [Dr. John P. Hamels](#)
To: [Matthew Robinson](#)
Cc: [John P. Hamels](#)
Subject: South Ripley Solar project
Date: Thursday, November 19, 2020 9:31:30 AM

[EXTERNAL SENDER]

Dear Mr. Robinson,

I received your letter regarding viewpoint recommendations for the local solar project. Is it possible that you can email me the share point site so that I can more easily access the attachments?

Thank you in advance.

Dr. John Hamels
Town Historian
Ripley, NY

Sent from my iPhone



300 State Street, Suite 502
Rochester, New York 14614
585.434.0790 phone
585.563.7432 fax
www.zoglaw.com

VIA Email

December 31, 2020

Environmental Design & Research, Landscape Architecture,
Engineering & Environmental Services, D.P.C.

Attn: Matthew Robinson

217 Montgomery Street, Suite 110

Syracuse, NY 13202

mrobinson@edrdpc.com

RE: Case 19-F-0560, *Application of ConnectGen LLC*: Town of Ripley's Response to VIA Solicitation Letter Dated November 12, 2020

Dear Mr. Robinson:

The Zoghlin Group, PLLC represents the Town of Ripley (the "Town") regarding the above-referenced case. We write today to provide a response to your request for additional information relevant to the Visual Impact Assessment ("VIA") you are currently conducting for the South Ripley Solar project. Thank you for providing the Town an extension of time to respond to your solicitation for feedback. This explanatory letter, and accompanying digital images, constitute the Town's response. **To further discuss the proposed new viewpoints, I suggest a video conference between you and representatives of the Ripley Planning Board be held at some point in early January.**

Enclosed photos TR01, TR02, TR03, TR04 are from the same location as existing VP 23. The viewpoint is located on State Route 76, which EDR refers to as "Sherman Rd." The directions these photos were taken are: TR01 – northwest, TR02 – west, TR03 – east, TR04, south. The Town believes these pictures provide a more expansive view that better captures how an observer would view the landscape.

Enclosed photos TR05, TR06, and TR07 are from location VP 15, which is a cemetery view looking North East from Sherman Rd. Multiple project parcels should be visible from this viewpoint. Enclosed image TR05 looks north. Enclosed image TR06 looks west. Enclosed image TR07 looks northwest toward multiple farmland parcels, and Lake Erie can be seen along with

Canada's shoreline on a clear day. The latitude and longitude for Picture 240 is 42.1948759, -79.7093464.

Enclosed photos TR08, TR09, TR10, and TR11 are from a new sensitive viewpoint not proposed by EDR. South Ripley Methodist Church is located at 10008 NE Sherman Rd. between the Cemetery and S. Ripley Road . Pictures TR08, TR09, and TR10 look North, and TR11 looks Southwest at the cattle farm and forestland. The latitude and longitude for the church is 42.1952230, -79.7052359. Some of these viewpoints show the church, while others show the view from the church.

Pictures TR12, TR13 are located at 42.2044284, -79.7019331, and demonstrate an additional publicly accessible sensitive viewpoint.

Pictures TR14 is located at 42.1808659, -79.6585671, and demonstrates the point of view of a driver passing through the proposed area of solar panels.

Picture TR15 is looking North East from the Firehall. There are 2 cattle farms with multiple hay and corn fields in view. The latitude and longitude of the fire hall is 42.1951258, -79.7267765.

Pictures TR16, TR17 are located on Irish Rd. at 42.2167541, -79.7448015. The images show north looking Views of Lake Erie and Canada within .0-1 miles from project area, as well as properties on the south side of Irish Rd. back the north side of north east Sherman Road. This area has game land, forested land and is very residential and includes grape vineyards.

As an additional sensitive visual receptor and potentially representative viewpoint, the Town proposes including the Ripley Rod and Gun Club, which adjoins the project area. The latitude and longitude for the club is 42.2072029, -79.6975470. The club was not able to provide a representative picture due to inclement weather.

Finally, VP 15 is not properly identified as a cemetery on the VIA maps.

The Town appreciates the opportunity to develop the scope of the South Ripley Solar VIA. The Town believes additional information about visual impact, and additional visual simulations, may be helpful in educating the public and addressing some individual concerns. The Town requests a video conference with with EDR to further discuss theses proposed additions to the VIA.

Respectfully,

/s/ Benjamin E. Wisniewski
Benjamin E. Wisniewski, Esq.

Encl. Proposed representative viewpoint pictures (via email attachment)

CC : James Muscato, Esq.
Young/Sommer LLC
5 Palisades Drive, Suite 300
Albany, NY 12205
jmuscato@youngsommer.com



Photo 1 - TR01

View looking Northwest from State Route 76 (Sherman Road) in the Town of Ripley, Chautauqua County



Photo 2 - TR02

View looking West from State Route 76 (Sherman Road) in the Town of Ripley, Chautauqua County

South Ripley Solar Project

Town of Ripley, Chautauqua County, New York

Attachment F: Figure 1

Sheet 1 of 7

Image Source: Zoghlin Group





Photo 3 - TR03

View looking East from State Route 76 (Sherman Road) in the Town of Ripley, Chautauqua County



Photo 4 - TR04

View looking South from State Route 76 (Sherman Road) in the Town of Ripley, Chautauqua County

South Ripley Solar Project

Town of Ripley, Chautauqua County, New York

Attachment F: Figure 1

Sheet 2 of 7

Image Source: Zoghlin Group





Photo 5 - TR05

View looking North from County Route 6 (NE Sherman Road) in the Town of Ripley, Chautauqua County



Photo 6 - TR06

View looking West from County Route 6 (NE Sherman Road) in the Town of Ripley, Chautauqua County



Photo 7 - TR07

View looking Northwest from South Ripley Cemetery in the Town of Ripley, Chautauqua County

South Ripley Solar Project

Town of Ripley, Chautauqua County, New York

Attachment F: Figure 1

Sheet 3 of 7

Image Source: Zoghlin Group





Photo 8 - TR08

View looking North from South Ripley Methodist Church (10008 NE Sherman Road between the Cemetery and S. Ripley Road) in the Town of Ripley, Chautauqua County



Photo 9 - TR09

View looking North from South Ripley Methodist Church (10008 NE Sherman Road between the Cemetery and S. Ripley Road) in the Town of Ripley, Chautauqua County



Photo 10 - TR10

View looking North from South Ripley Methodist Church (10008 NE Sherman Road between the Cemetery and S. Ripley Road) in the Town of Ripley, Chautauqua County

South Ripley Solar Project

Town of Ripley, Chautauqua County, New York

Attachment F: Figure 1

Sheet 4 of 7

Image Source: Zoghlin Group





Photo 11 - TR11

View looking Southwest from South Ripley Methodist Church (10008 NE Sherman Road between the Cemetery and S. Ripley Road) in the Town of Ripley, Chautauqua County



Photo 12 - TR12

Coordinates:
42.20443°N, 79.70193°W



Photo 13 - TR13

Coordinates:
42.20443°N, 79.70193°W

South Ripley Solar Project

Town of Ripley, Chautauqua County, New York

Attachment F: Figure 1

Sheet 5 of 7

Image Source: Zoghlin Group





Photo 14 - TR14

Coordinates:
42.18087°N, 79.65857°W



Photo 15 - TR15

View looking Northeast from the Firehall

Coordinates:
42.19513°N, 79.72678°W



Photo 16 - TR16

View looking North from Irish Road in the Town of Ripley, Chautauqua County

Coordinates:
42.21675°N, 79.74480°W

South Ripley Solar Project

Town of Ripley, Chautauqua County, New York

Attachment F: Figure 1

Sheet 6 of 7

Image Source: Zoghlin Group





Photo 17 - TR17

View looking North from Irish Road in the Town of Ripley,
Chautauqua County

Coordinates:

42.21675°N, 79.74480°W

South Ripley Solar Project

Town of Ripley, Chautauqua County, New York

Attachment F: Figure 1

Sheet 7 of 7

Image Source: Zoghlin Group

