

Existing Conditions



Simulation



Simulation with Mitigation 5-7 Year Post Install



Simulation with Mitigation 5-7 Year Post Install (Leaf-off)



Attachment D. Visual Simulations

Viewpoint Information

Viewpoint ID: 75
County: Chautauqua
Town: Mina
Location: County Route 622
Latitude, Longitude:
42.15472°N, 79.67398°W
Direction of View: Northeast
Viewing Distance: 7,450 feet (1.41 miles)
Distance Zone: Foreground

Visual Resources

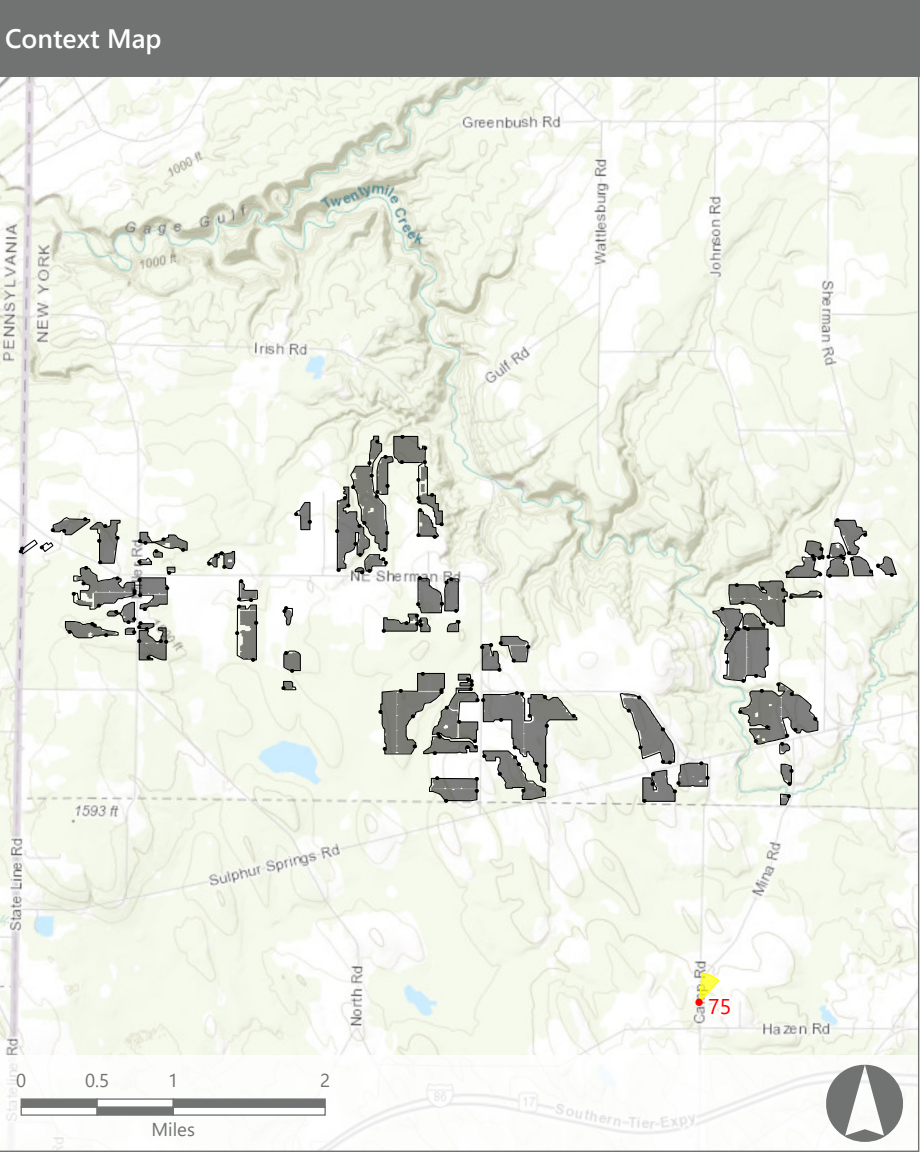
Landscape Type: Rural Residential/
Agricultural
User Group: Local Residents, Through-
Travelers
VSR: None Identified

Photograph Information

Date Taken: March 12, 2021
Time: 6:29 PM
Camera: Nikon D7100
Resolution: 24.1 Megapixels
Lens Focal Length: 35 mm
Camera Elevation: 1,614 feet
Field of View: 37°

Project Information

Racking Type: Fixed Tilt PV Array
Max Panel Height: 13 feet AGL
Project Area: 3,382 acres



Context Photo: View to the North



Simulation Photo: View to the Northeast



Context Photo: View to the East-northeast



Context Photo: View to the East

South Ripley Solar Project

Town of Ripley, Chautauqua County, New York

Section 94-c Application. Matter No. 21-00750

Sheet 77 of 80



Existing View



Proposed View



Existing Condition

Viewpoint 75 is located on County Route 662 in the Town of Mina, south of the Facility Site. This high elevation viewpoint is in the Rural Residential/Agricultural LSZ, approximately 1.41 miles from the nearest proposed PV panel array. The existing view in the northeast from this location is expansive and features some successional vegetation and an overgrown field in the foreground that drops to a line of deciduous trees at the base of a slope in the middle ground. Beyond this line of trees, a broad valley, characterized by a mix of open fields, woodlots, and hedgerows, extends from the middle ground into the background. The valley has gently undulating topography and includes widely scattered homes and barns. Mina Road and a roadside utility line curve through the valley and up a gentle slope on its opposite side. The land rises gradually into the background and transitions from a mix of fields and forests to uniform forest cover on higher ground. The view has a strong rural/pastoral character and relatively high scenic quality due to the complexity of gently rolling fields and woodlots, the variety of colors and textures, interspersed widely spaced rural structures, and the availability of panoramic long-distance views.

Proposed View

With the proposed Facility in place, an array of solar panels is visible as a small dark mass in the background. The panel array blends with the pattern and form of the existing vegetation and its presence does not alter the composition or scenic quality of the view. Although the panel array is noticeable, its size and distance from the viewer mitigate its visual effect. It is not a major component of the view and does not significantly alter perceived land use or viewer enjoyment. The visual integrity and beauty of the view remain fully intact.

Viewpoint Sensitivity¹:

Scenic Quality:
☐ Low
☐ Moderate
☒ High

Viewer Exposure:
☐ Continuous
☒ Repeated/Regular
☒ Occasional/Brief
☐ Rare

¹ Viewpoint Sensitivity information is gathered from rating panel results. Scenic Quality is an average based on Low = 1, Moderate = 2, High = 3. Viewer Exposure reflects all those selected by the review panel.

Contrast Rating Scores²:

Component	Install	Contrast Rating 5-7 Years
Landform	0.5	Insignificant/Minimal
Vegetation	0.6	Insignificant/Minimal
Land Use	0.9	Minimal
Water	0.0	Insignificant
Sky	0.1	Insignificant
Viewer Activity	0.5	Insignificant/Minimal
AVERAGE	0.4	Insignificant/Minimal

² Contrast Rating Scale: 0.0 - 0.2 (Insignificant), 0.3 – 0.7 (Insignificant/Minimal), 0.8 – 1.2 (Minimal), 1.3 – 1.7 (Minimal/Moderate), 1.8 - 2.2 (Moderate), 2.3 – 2.7 (Moderate/Appreciable), 2.8 – 3.2 (Appreciable) 3.3 – 3.7 Appreciable/Strong), 3.8 – 4.0 (Strong).

Contrast Rating - Lowest and Highest Scores:

Install		
Component	Score	
	Low	High
Landform	0	1
Vegetation	0	1
Land Use	0.5	1
Water	0	0
Sky	0	0.5
Viewer Activity	0	1

Existing Conditions



Simulation



South Ripley Solar Project

Town of Ripley, Chautauqua County, New York

Section 94-c Application. Matter No. 21-00750 | Viewpoint 75, County Route 622 in the Town of Mina - Simulation