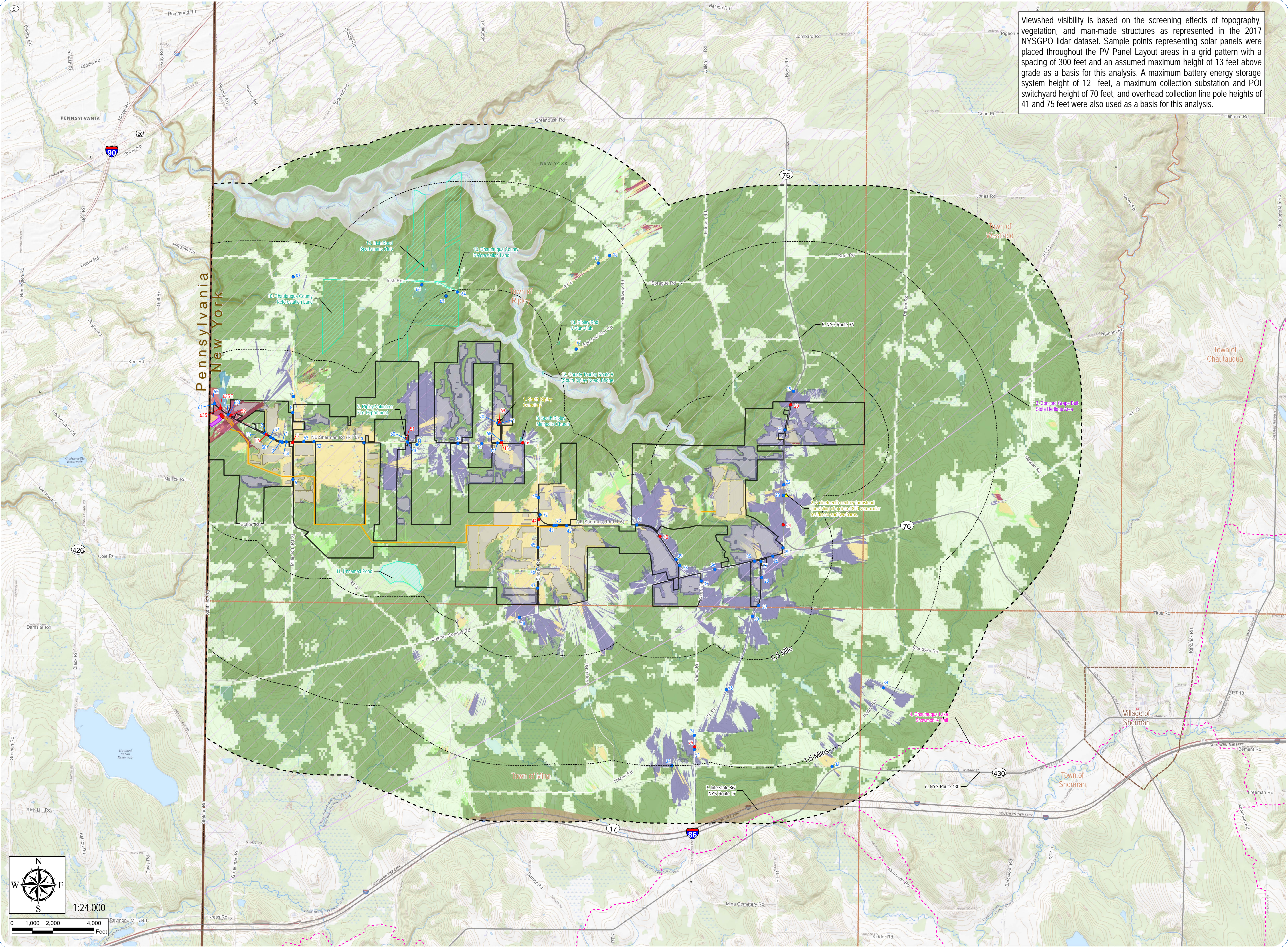


ATTACHMENT A

Composite Overlay Map



Viewshed visibility is based on the screening effects of topography, vegetation, and man-made structures as represented in the 2017 NYSGPO lidar dataset. Sample points representing solar panels were placed throughout the PV Panel Layout areas in a grid pattern with a spacing of 300 feet and an assumed maximum height of 13 feet above grade as a basis for this analysis. A maximum battery energy storage system height of 12 feet, a maximum collection substation and POI switchyard height of 70 feet, and overhead collection line pole heights of 41 and 75 feet were also used as a basis for this analysis.

South Ripley Solar Project

Town of Ripley, Chautauqua County, New York

Visual Impact Assessment

Attachment A: Composite Overlay

Viewpoint Location

- Viewpoint
- Simulation Location

Visually Sensitive Resource

- ▲ NRHP-Eligible Site
- Snowmobile Trail
- State and Interstate Highway
- Resource Identified by Stakeholder
- Concord Grape Belt State Heritage Area

Facility Visibility

- Potential PV Panel Visibility
- Potential Interconnection Facility Visibility
- Potential Overhead Collection Line Visibility
- Potential PV Panel and Overhead Collection Line Visibility
- Potential PV Panel and Interconnection Facility Visibility
- Potential Overhead Collection Line and Interconnection Facility Visibility
- Potential PV Panel, Interconnection Facility, and Overhead Line Visibility

Landscape Similarity Zone

- Forest
- Gorge
- Rural Residential/Agriculture
- Transportation Corridor

Facility Components

- Distance Zone Transition
- Overhead Collection Line
- Battery Energy Storage System
- Collection Substation
- POI Switchyard
- PV Panel Area
- Facility Site
- 2-Mile Visual Study Area
- City/Village Boundary
- Town Boundary
- State Boundary

Sheet 1 of 2

Notes: 1. Basemap: ESRI ArcGIS Online "USGS Topo" map service. 2. This map was generated in ArcMap on January 5, 2022. 3. This is a color graphic. Reproduction in grayscale may misrepresent the data.



South Ripley Solar Project

Town of Ripley, Chautauqua County, New York

Visual Impact Assessment

Attachment A: Facility Visibility and Zoning

Facility Visibility

- Potential PV Panel Visibility
- Potential Interconnection Facility Visibility
- Potential Overhead Collection Line Visibility
- Potential PV Panel and Overhead Collection Line Visibility
- Potential PV Panel and Interconnection Facility Visibility
- Potential Overhead Collection Line and Interconnection Facility Visibility
- Potential PV Panel, Interconnection Facility, and Overhead Line Visibility

Zoning District

- Town of Mina
 - A1 - Agricultural District
- Town of Ripley
 - Recreational/Conservation
 - Rural/Agriculture District
- Town of Sherman
 - No Adopted Zoning Ordinance
- Town of Westfield
 - Residential-Agricultural

Facility Components

- Distance Zone Transition
- Overhead Collection Line
- Battery Energy Storage System
- Collection Substation
- POI Switchyard
- PV Panel Area
- Facility Site
- 2-Mile Visual Study Area

Sheet 2 of 2

Notes: 1. Basemap: ESRI ArcGIS Online "USGS Topo" map service. 2. This map was generated in ArcMap on January 5, 2022. 3. This is a color graphic. Reproduction in grayscale may misrepresent the data.

