

Symbol Legend

34.5KV STRUCTURE JUNCTION BOX (PCSXX.XX) PCS ID

20 STRUCTURE & ID PAD MOUNTED SWITCHGEAR

Plan View Legend (Collector System Feeders organized by color)

AERIAL	IN CONDUIT	IN TRENCH	FEEDER 1 CABLES
Red	Red	Red	Feeder 1 Cables
Yellow	Yellow	Yellow	Feeder 2 Cables
Green	Green	Green	Feeder 3 Cables
Blue	Blue	Blue	Feeder 4 Cables
Black	Black	Black	34.5KV BESS CABLES

PROFILE LINE LEGEND

Red line	795 ACSR 26/7 STRAND DRAKE
Green line	36 FIBRE AFL AC-20/47/607 OPGW
Blue line	1/2-INCH 7-STRAND EHS
Black line	8IN PVC CONCRETE ENCASED CONDUIT
Thick black line	EXISTING/FINAL GRADE
Dashed black line	EXISTING GRADE TO BE REMOVED
Thin black line	VERTICAL CLEARANCE LINE (21')

- Notes:
- POLE LOCATIONS ARE INDICATIVE ONLY AND BASED ON LIDAR DATA PROVIDED ON 05/18/2021 AND ESRI WMS IMAGES.
 - THE COORDINATE SYSTEM IS NAD83 (3103), NEW YORK WEST, US SURVEY FEET.
 - PHASE CONDUCTOR AND DOWNLEADS INCORPORATE A TWIN 795 KCMIL 26/7 STRAND DRAKE ACSR CONDUCTOR, 36 FIBRE ALUMACORE OPGW AND 1/2 INCH 7-STRAND EHS.
 - PHASE CONDUCTOR IS DISPLAYED AT EMERGENCY TEMPERATURE OF 212°F AND OPGW AND EHS AT 120°F.
 - GROUND CLEARANCE LINE IS SHOWN AT 21 FT ABOVE GROUND.
 - ALL DIMENSIONS ARE IN FEET UNLESS OTHERWISE STATED.
 - DESIGN TENSIONS:
795 ACSR 26/7 STRAND DRAKE
25% CREEP @ NESC TENSION LIMIT 261H1C

36 FIBRE AFL AC/20/47/607 AND 1/2 INCH 7 STRAND EHS
20% CREEP @ NESC TENSION LIMIT 250B HEAVY

SLACK SPAN 795 ACSR 26/7 STRAND DRAKE
2000 LBS INITIAL @ NESC 250B HEAVY

SLACK SPAN 36 FIBRE AFL AC/20/47/607 AND 1/2 INCH 7-STRAND EHS
1000 LBS INITIAL @ NESC 250B HEAVY
 - LOCATIONS 3 TO 67: TRIPLE CIRCUIT
POLE 1, 2, 3, AND 68 TO 122: SINGLE CIRCUIT

D	01/18/2022	EHK	ISSUED FOR 94C	JS	RA
C	07/20/2021	JD	ISSUED FOR REVIEW	EHK	JS
B	07/02/2021	JD	ISSUED FOR REVIEW	EHK	JAB
A	01/29/2021	EHK	ISSUED FOR REVIEW	BG	JB
Rev	Date	Drawn	Description	Ch'k'd	App'd

M **M**
MOTT **MACDONALD**

101 Station Drive
Suite 130
Westwood, MA 02090
United States
T +1 (781) 915-0015
F +1 (781) 915-0001
W www.mottmac.com

Client

South Ripley
SOLAR PROJECT

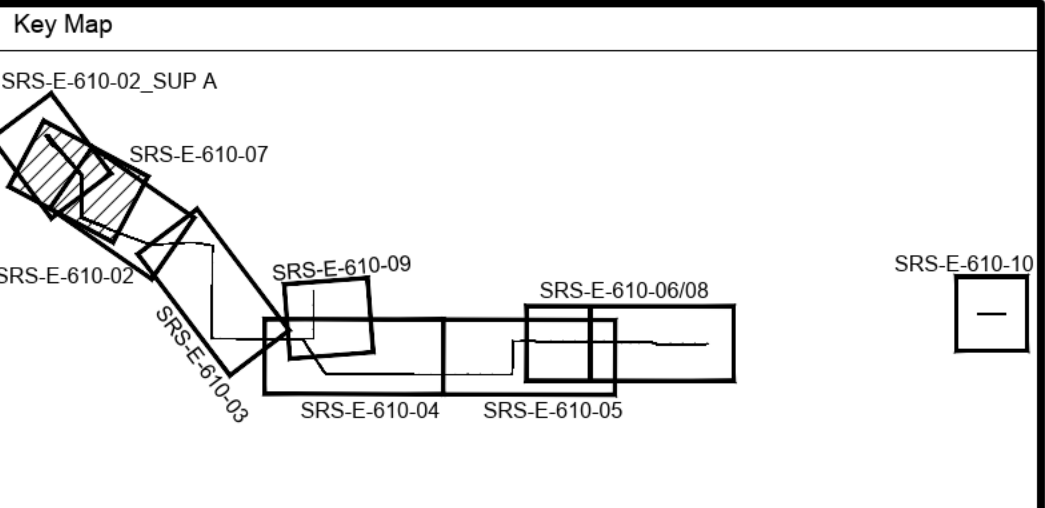
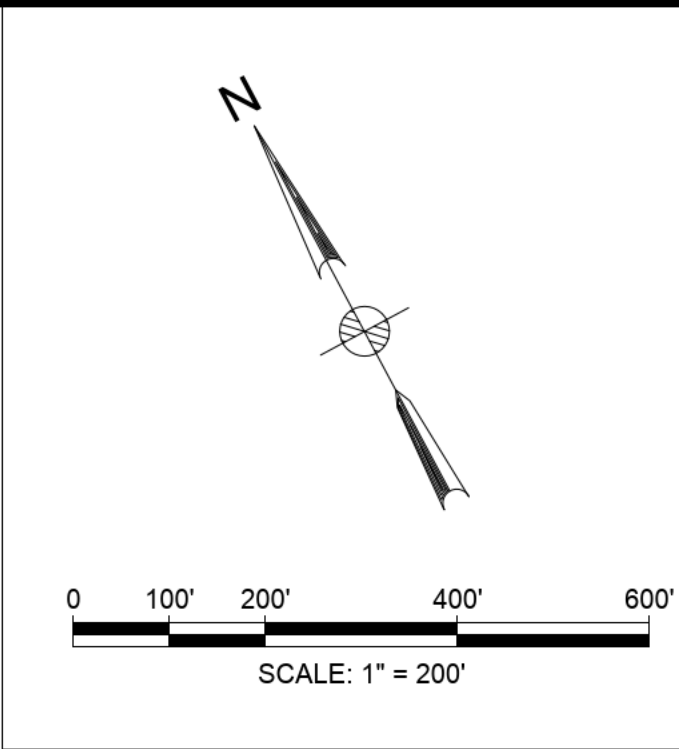
Title

SOUTH RIPLEY SOLAR
34.5KV COLLECTOR SYSTEM
PLAN AND PROFILE
SHEET 5

PRELIMINARY NOT FOR CONSTRUCTION REPLACE WITH ENGINEERS STAMP AT CONSTRUCTION AND/OR FABRICATION	Designed	JD	Eng check	EHK
	Drawn	JD	Approved	JS
	Scale at ANSI D As Noted		Date	Rev
	Drawing Number		01/18/2022	D

SRS-E-610-06

CONCEPTUAL - NOT FOR CONSTRUCTION



Symbol Legend

34.5KV STRUCTURE	JUNCTION BOX	(PCSXX.XX) PCS ID
20 STRUCTURE & ID	PAD MOUNTED SWITCHGEAR	

Plan View Legend (Collector System Feeders organized by color)

AERIAL	IN CONDUIT	IN TRENCH	
Red dashed line	Red dashed line	Red dashed line	FEEDER 1 CABLES
Yellow dashed line	Yellow dashed line	Yellow dashed line	FEEDER 2 CABLES
Green dashed line	Green dashed line	Green dashed line	FEEDER 3 CABLES
Blue dashed line	Blue dashed line	Blue dashed line	FEEDER 4 CABLES
			34.5KV BESS CABLES

PROFILE LINE LEGEND

Red line	795 ACSR 26/7 STRAND DRAKE
Green line	36 FIBRE AFL AC-20/47/607 OPGW
Blue line	1/2-INCH 7-STRAND EHS
Black line	8IN PVC CONCRETE ENCASED CONDUIT
Thick black line	EXISTING/FINAL GRADE
Dashed black line	EXISTING GRADE TO BE REMOVED
Thin black line	VERTICAL CLEARANCE LINE (21')


- Notes:
- POLE LOCATIONS ARE INDICATIVE ONLY AND BASED ON LIDAR DATA PROVIDED ON 05/18/2021 AND ESRI WMS IMAGES.
 - THE COORDINATE SYSTEM IS NAD83 (3103), NEW YORK WEST, US SURVEY FEET.
 - PHASE CONDUCTOR AND DOWNLEADS INCORPORATE A TWIN 795 KCMIL 26/7 STRAND DRAKE ACSR CONDUCTOR, 36 FIBRE ALUMACORE OPGW AND 1/2 INCH 7-STRAND EHS.
 - PHASE CONDUCTOR IS DISPLAYED AT EMERGENCY TEMPERATURE OF 212°F AND OPGW AND EHS AT 120°F.
 - GROUND CLEARANCE LINE IS SHOWN AT 21 FT ABOVE GROUND.
 - ALL DIMENSIONS ARE IN FEET UNLESS OTHERWISE STATED.
 - DESIGN TENSIONS:
795 ACSR 26/7 STRAND DRAKE
25% CREEP @ NESC TENSION LIMIT 261H1C

36 FIBRE AFL AC/20/47/607 AND 1/2 INCH 7 STRAND EHS
20% CREEP @ NESC TENSION LIMIT 250B HEAVY

SLACK SPAN 795 ACSR 26/7 STRAND DRAKE
2000 LBS INITIAL @ NESC 250B HEAVY

SLACK SPAN 36 FIBRE AFL AC/20/47/607 AND 1/2 INCH 7-STRAND EHS
1000 LBS INITIAL @ NESC 250B HEAVY
 - LOCATIONS 3 TO 67: TRIPLE CIRCUIT
POLE 1, 2, 3, AND 68 TO 122: SINGLE CIRCUIT

Rev	Date	Drawn	Description	Ch'k'd	App'd
D	01/18/2022	EHK	ISSUED FOR 94C	JS	RA
C	07/20/2021	JD	ISSUED FOR REVIEW	EHK	JS
B	07/02/2021	JD	ISSUED FOR REVIEW	EHK	JAB
A	01/29/2021	EHK	ISSUED FOR REVIEW	BG	JB



101 Station Drive
Suite 130
Westwood, MA 02090
United States
T +1 (781) 915-0015
F +1 (781) 915-0001
W www.mottmac.com

Client

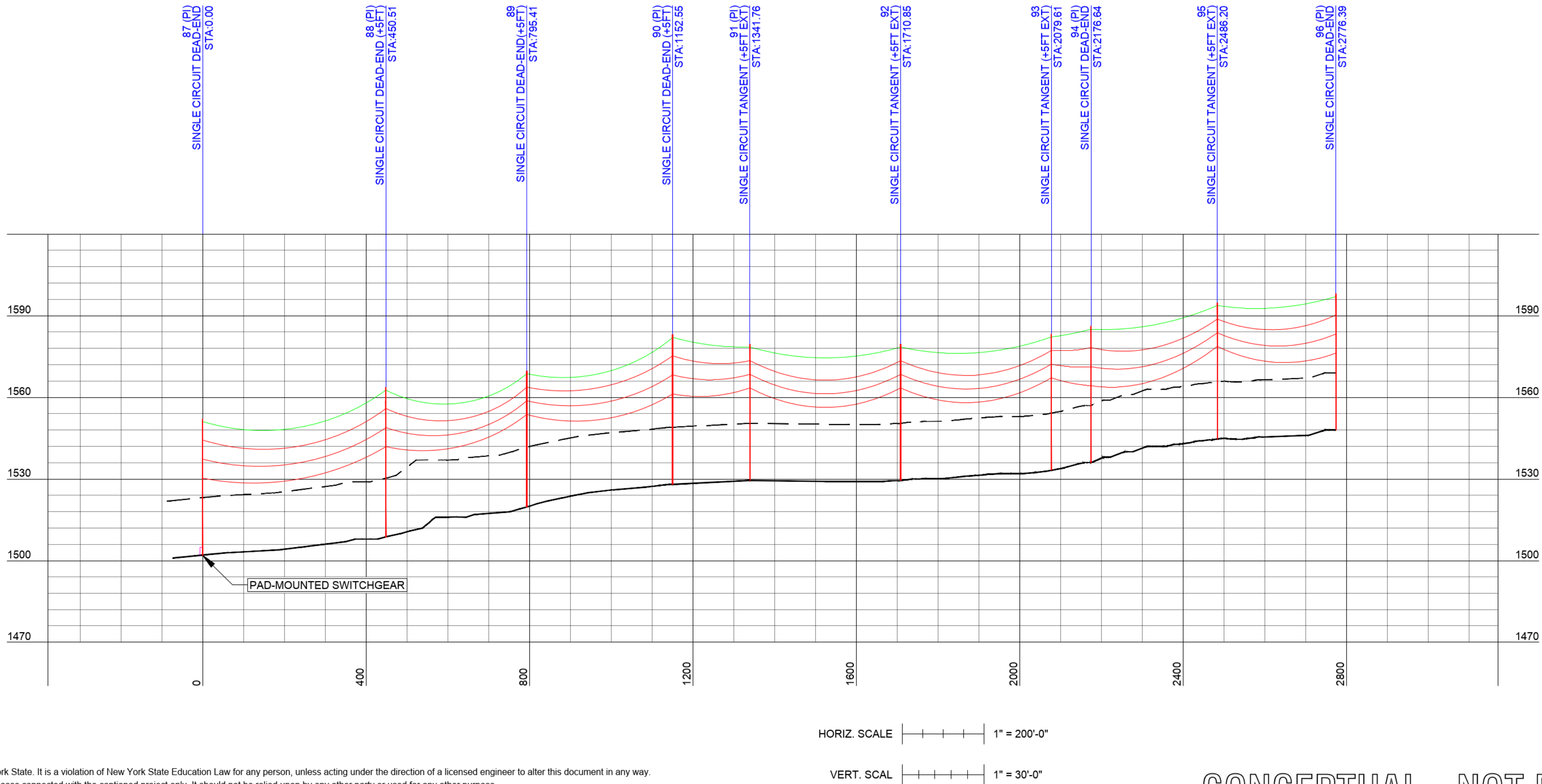


Title

**SOUTH RIPLEY SOLAR
34.5KV COLLECTOR SYSTEM
PLAN AND PROFILE
SHEET 6**

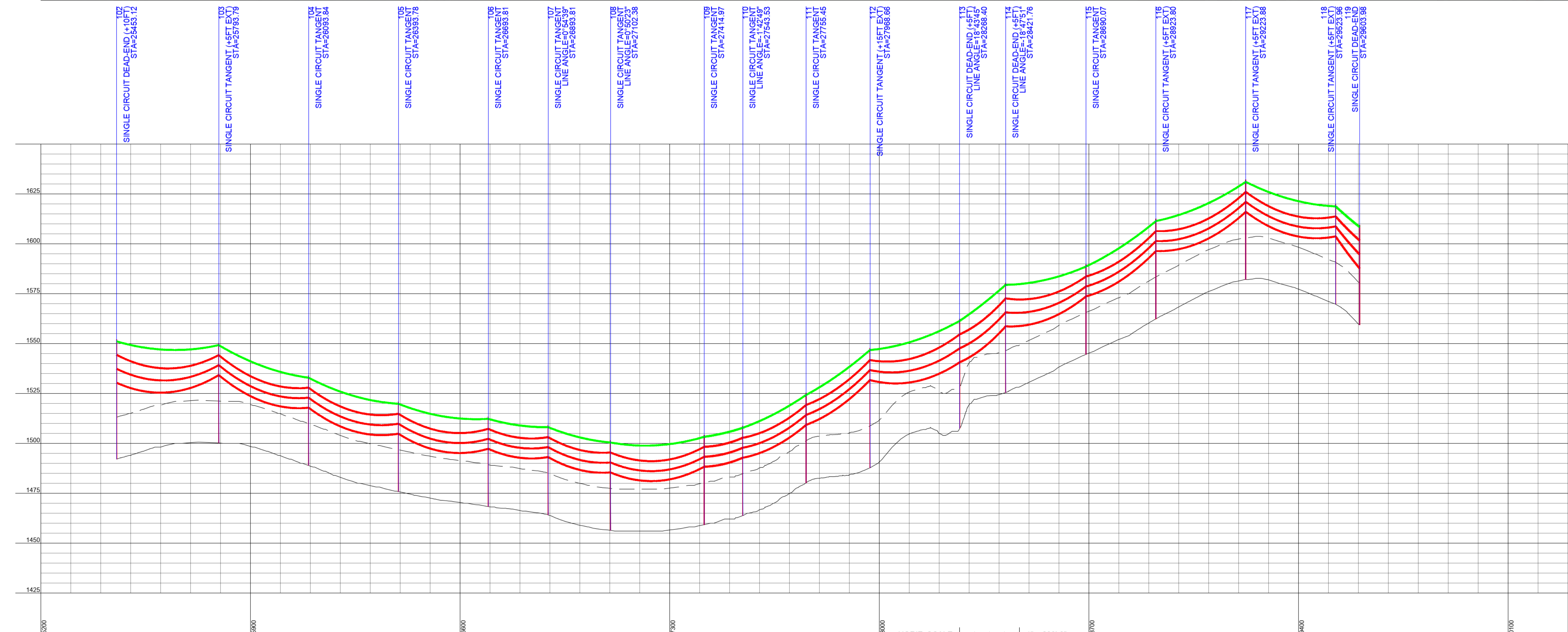
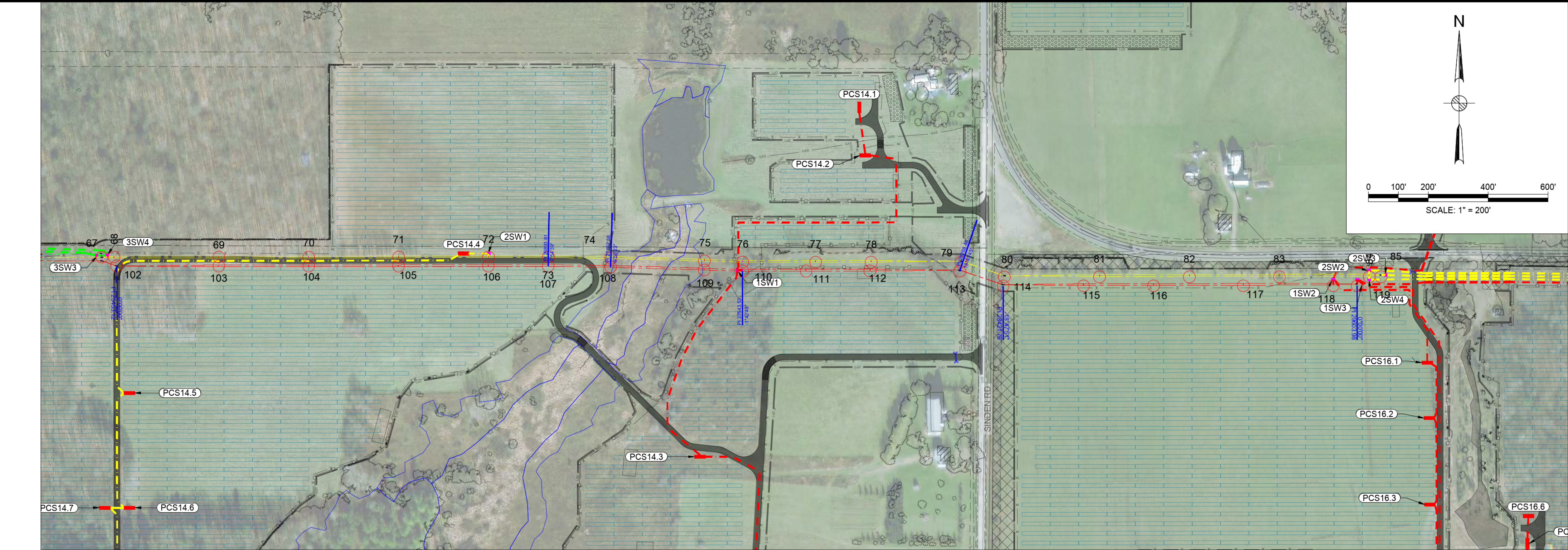
PRELIMINARY NOT FOR CONSTRUCTION REPLACE WITH ENGINEERS STAMP AT CONSTRUCTION AND/OR FABRICATION	Designed	JD	Eng check	EHK
	Drawn	JD	Approved	JS
	Scale at ANSI D As Noted		Date	Rev
	Drawing Number		01/18/2022	D

SRS-E-610-07



© Mott MacDonald
This drawing was prepared under the direction of an engineer licensed in New York State. It is a violation of New York State Education Law for any person, unless acting under the direction of a licensed engineer to alter this document in any way.
This document is issued for the party which commissioned it and for specific purposes connected with the captioned project only. It should not be relied upon by any other party or used for any other purpose.
We accept no responsibility for the consequences of this document being relied upon by any other party, or being used for any other purpose, or containing any error or omission which is due to an error or omission in data supplied to us by other parties.

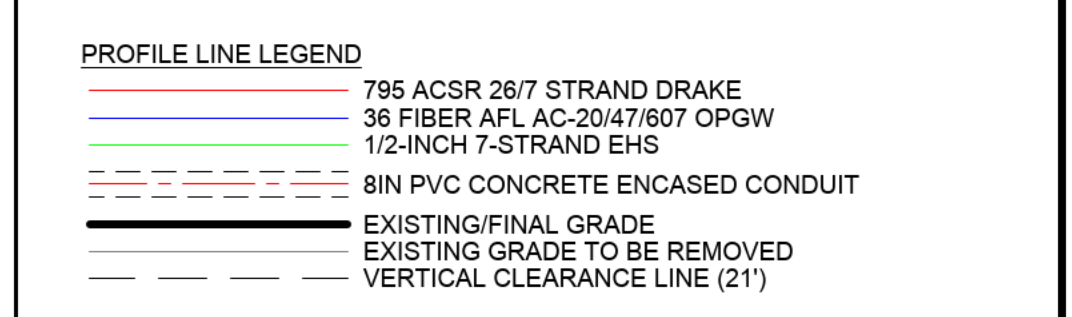
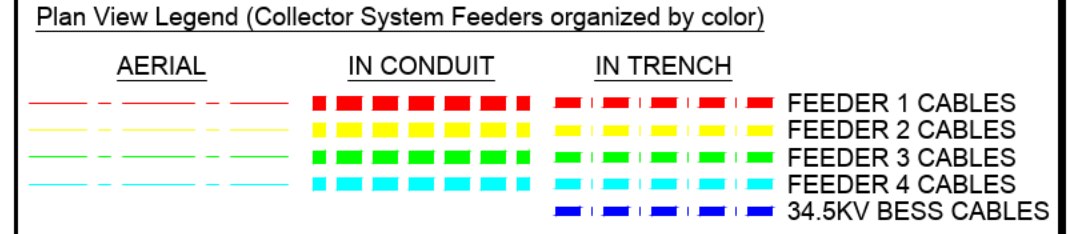
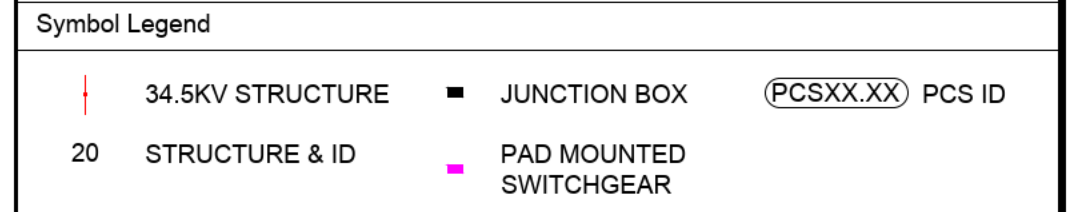
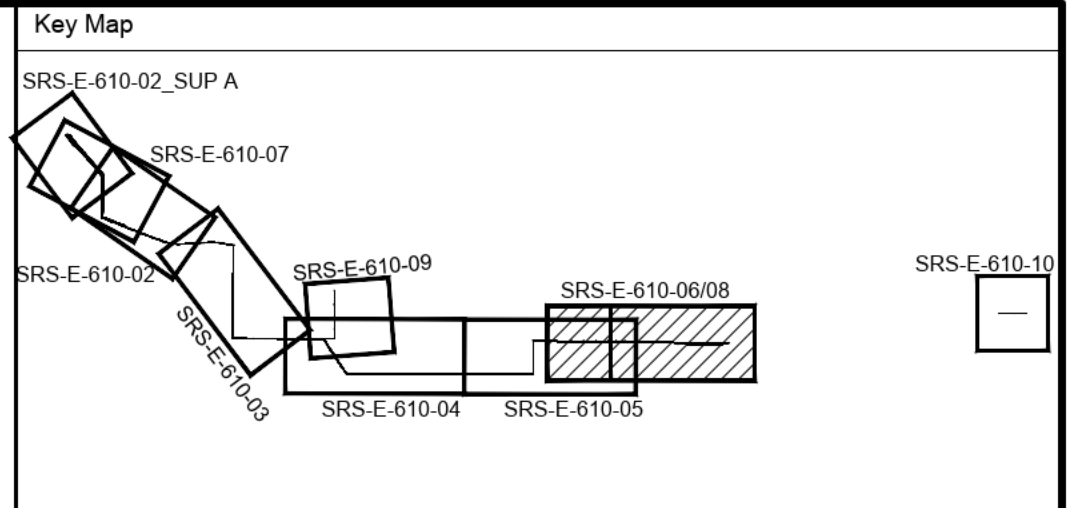
CONCEPTUAL - NOT FOR CONSTRUCTION



© Mott MacDonald
This drawing was prepared under the direction of an engineer licensed in New York State. It is a violation of New York State Education Law for any person, unless acting under the direction of a licensed engineer to alter this document in any way.
This document is issued for the party which commissioned it and for specific purposes connected with the captioned project only. It should not be relied upon by any other party or used for any other purpose.
We accept no responsibility for the consequences of this document being relied upon by any other party, or being used for any other purpose, or containing any error or omission which is due to an error or omission in data supplied to us by other parties.

HORIZ. SCALE 1" = 200'-0"
VERT. SCAL 1" = 30'-0"

CONCEPTUAL - NOT FOR CONSTRUCTION



- Notes:
- POLE LOCATIONS ARE INDICATIVE ONLY AND BASED ON LIDAR DATA PROVIDED ON 05/18/2021 AND ESRI WMS IMAGES.
 - THE COORDINATE SYSTEM IS NAD83 (3103), NEW YORK WEST, US SURVEY FEET.
 - PHASE CONDUCTOR AND DOWNLEADS INCORPORATE A TWIN 795 KCMIL 26/7 STRAND DRAKE ACSR CONDUCTOR, 36 FIBRE ALUMACORE OPGW AND 1/2 INCH 7-STRAND EHS.
 - PHASE CONDUCTOR IS DISPLAYED AT EMERGENCY TEMPERATURE OF 212°F AND OPGW AND EHS AT 120°F.
 - GROUND CLEARANCE LINE IS SHOWN AT 21 FT ABOVE GROUND.
 - ALL DIMENSIONS ARE IN FEET UNLESS OTHERWISE STATED.
 - DESIGN TENSIONS:
 - 795 ACSR 26/7 STRAND DRAKE
 - 25% CREEP @ NESC TENSION LIMIT 261H1C
 - 36 FIBRE AFL AC/20/47/607 AND 1/2 INCH 7 STRAND EHS
 - 20% CREEP @ NESC TENSION LIMIT 250B HEAVY
 - SLACK SPAN 795 ACSR 26/7 STRAND DRAKE
 - 2000 LBS INITIAL @ NESC 250B HEAVY
 - SLACK SPAN 36 FIBRE AFL AC/20/47/607 AND 1/2 INCH 7-STRAND EHS
 - 1000 LBS INITIAL @ NESC 250B HEAVY
 - LOCATIONS 3 TO 67: TRIPLE CIRCUIT
POLE 1, 2, 3, AND 68 TO 122: SINGLE CIRCUIT

D	01/18/2022	EHK	ISSUED FOR 94C	JS	RA
C	07/20/2021	JD	ISSUED FOR REVIEW	EHK	JS
B	07/02/2021	JD	ISSUED FOR REVIEW	EHK	JAB
A	01/29/2021	EHK	ISSUED FOR REVIEW	BG	JB
Rev	Date	Drawn	Description	Ch'k'd	App'd

101 Station Drive
Suite 130
Westwood, MA 02090
United States
T +1 (781) 915-0015
F +1 (781) 915-0001
W www.mottmac.com

Client

Title
**SOUTH RIPLEY SOLAR
34.5KV COLLECTOR SYSTEM
PLAN AND PROFILE
SHEET 7**

PRELIMINARY NOT FOR CONSTRUCTION REPLACE WITH ENGINEERS STAMP AT CONSTRUCTION AND/OR FABRICATION	Designed	JD	Eng check	EHK
	Drawn	JD	Approved	JS
	Scale at ANSI D	Date	Rev	
	As Noted	01/18/2022	D	
Drawing Number	SRS-E-610-08			