

MVAC Electrical Collector System Drawings															
Dwg. No.	Drawing Title	Date	Rev.	Date	Rev.	Date	Rev.	Date	Rev.	Date	Rev.	Date	Rev.	Date	Rev.
SRS-E-600-00	Electrical Collector System Cover Sheet and Drawing Index	01/29/21	A	05/18/21	B	07/02/21	C	07/20/21	D	12/08/21	E	01/18/22	F		
SRS-E-610-01	34.5KV Collector line Plan and Profile - Key Map	01/29/21	A	07/02/21	B	07/20/21	C	01/18/22	D						
SRS-E-610-02	34.5KV Collector line Plan and Profile - Sheet 1	01/29/21	A	07/02/21	B	07/20/21	C	01/18/22	D						
SRS-E-610-02_SUP A	34.5KV Collector line Plan and Profile - Supplement A	11/24/21	A	12/08/21	B	01/18/22	C								
SRS-E-610-03	34.5KV Collector line Plan and Profile - Sheet 2	01/29/21	A	07/02/21	B	07/20/21	C	01/18/22	D						
SRS-E-610-04	34.5KV Collector line Plan and Profile - Sheet 3	01/29/21	A	07/02/21	B	07/20/21	C	01/18/22	D						
SRS-E-610-05	34.5KV Collector line Plan and Profile - Sheet 4	01/29/21	A	07/02/21	B	07/20/21	C	01/18/22	D						
SRS-E-610-06	34.5KV Collector line Plan and Profile - Sheet 5	01/29/21	A	07/02/21	B	07/20/21	C	01/18/22	D						
SRS-E-610-07	34.5KV Collector line Plan and Profile - Sheet 6	01/29/21	A	07/02/21	B	07/20/21	C	01/18/22	D						
SRS-E-610-08	34.5KV Collector line Plan and Profile - Sheet 7	01/29/21	A	07/02/21	B	07/20/21	C	01/18/22	D						
SRS-E-610-09	34.5KV Collector line Plan and Profile - Sheet 8	01/29/21	A	07/02/21	B	07/20/21	C	01/18/22	D						
SRS-E-610-10	34.5KV Collector line Plan and Profile - Sheet 9	01/29/21	A	07/02/21	B	07/20/21	C	01/18/22	D						
SRS-E-620-01_SUP A	Single Line Diagram and Cable Schedule - Feeder 1 - Supplement A	11/24/21	A												
SRS-E-620-02_SUP A	Single Line Diagram and Cable Schedule - Feeder 2 - Supplement A	11/24/21	A												
SRS-E-620-03_SUP A	Single Line Diagram and Cable Schedule - Feeder 3 - Supplement A	11/24/21	A												
SRS-E-620-04_SUP A	Single Line Diagram and Cable Schedule - Feeder 4 - Supplement A	11/24/21	A												
SRS-E-620-05_SUP A	BESS Single Line Diagram and Cable Schedule - Supplement A	11/24/21	A												
SRS-E-640-01	Collector System Cable Trenching and Burial Details	01/29/21	A	05/21/21	B	07/02/21	C	01/18/22	D						
SRS-E-640-01_SUP A	Cable Trenching and Burial Details - Supplement A	11/24/21	A	12/08/21	B	01/18/22	C								
SRS-E-640-02	Underground Cable Splicing Details	01/29/21	A	05/21/21	B	07/02/21	C								
SRS-E-640-03	Typical Road and Wetland Crossing Details	01/29/21	A	05/21/21	B	07/02/21	C								
SRS-E-640-04	Typical Underground Pipeline Crossing Details	01/29/21	A	05/21/21	B	07/02/21	C								
SRS-E-640-05	Typical Protected Vegetation Crossing Details	01/29/21	A	05/21/21	B	07/02/21	C								
SRS-E-650-01	Junction Box Details	01/29/21	A	05/21/21	B	07/02/21	C								
SRS-E-650-02	Pad-Mounted Switchgear Details	01/29/21	A	05/21/21	B	07/02/21	C								
SRS-E-660-01	Typical Single Circuit Framing Details - Tangent Poles	01/29/21	A	05/21/21	B	07/02/21	C								
SRS-E-660-02	Typical Single Circuit Framing Details - Dead-End Poles	01/29/21	A	05/21/21	B	07/02/21	C								
SRS-E-660-03	Typical Triple Circuit Framing Details	01/29/21	A	05/21/21	B	07/02/21	C								
SRS-E-663-01	Typical Guy and Anchor Details	01/29/21	A	05/21/21	B	07/02/21	C								

\*\*THESE DESIGN DRAWINGS HAVE BEEN CREATED AT THE DIRECTION OF A PROFESSIONAL ENGINEER LICENSED IN THE STATE OF NEW YORK.\*\*  
ENGINEER OF RECORD: JOSH BERKOW, LICENSE# 089635

© Mott MacDonald  
This drawing was prepared under the direction of an engineer licensed in New York State. It is a violation of New York State Education Law for any person, unless acting under the direction of a licensed engineer to alter this document in any way.  
This document is issued for the party which commissioned it and for specific purposes connected with the captioned project only. It should not be relied upon by any other party or used for any other purpose.  
We accept no responsibility for the consequences of this document being relied upon by any other party, or being used for any other purpose, or containing any error or omission which is due to an error or omission in data supplied to us by other parties.

# SOUTH RIPLEY SOLAR PROJECT

PREPARED FOR: CONNECTGEN CHAUTAUQUA COUNTY, LLC

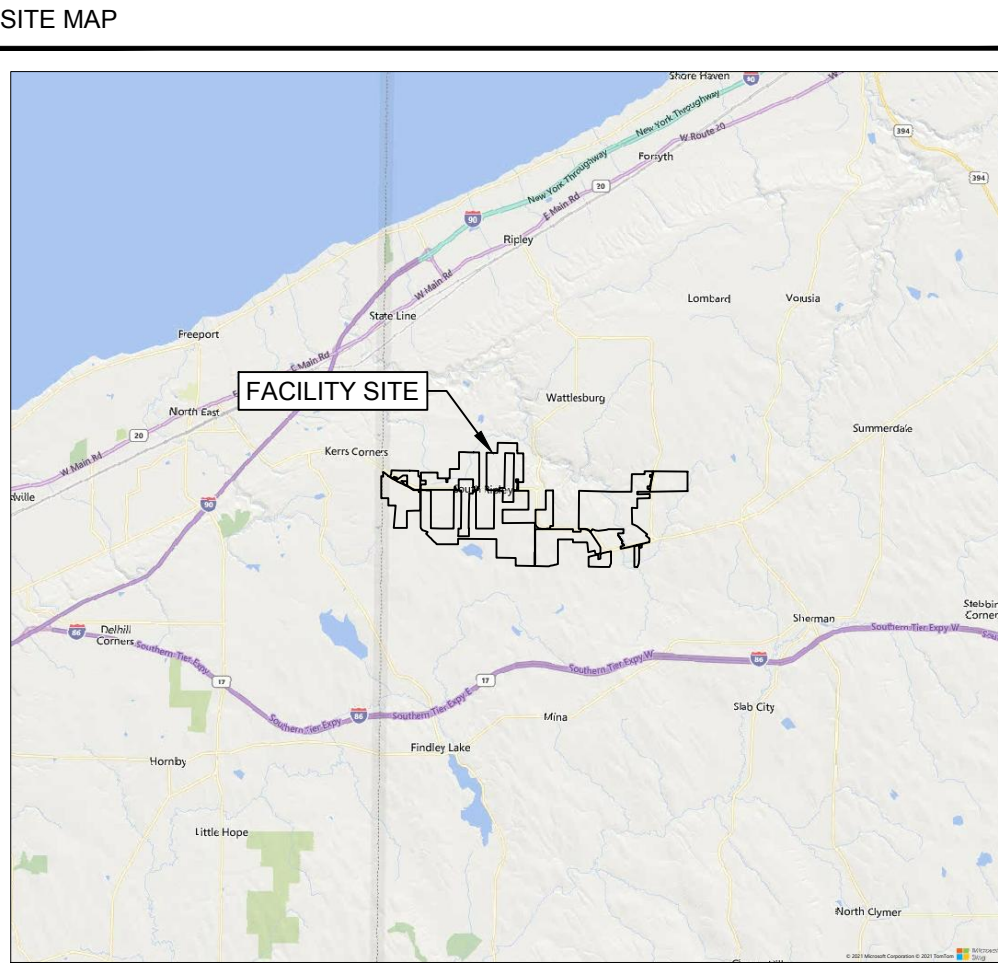
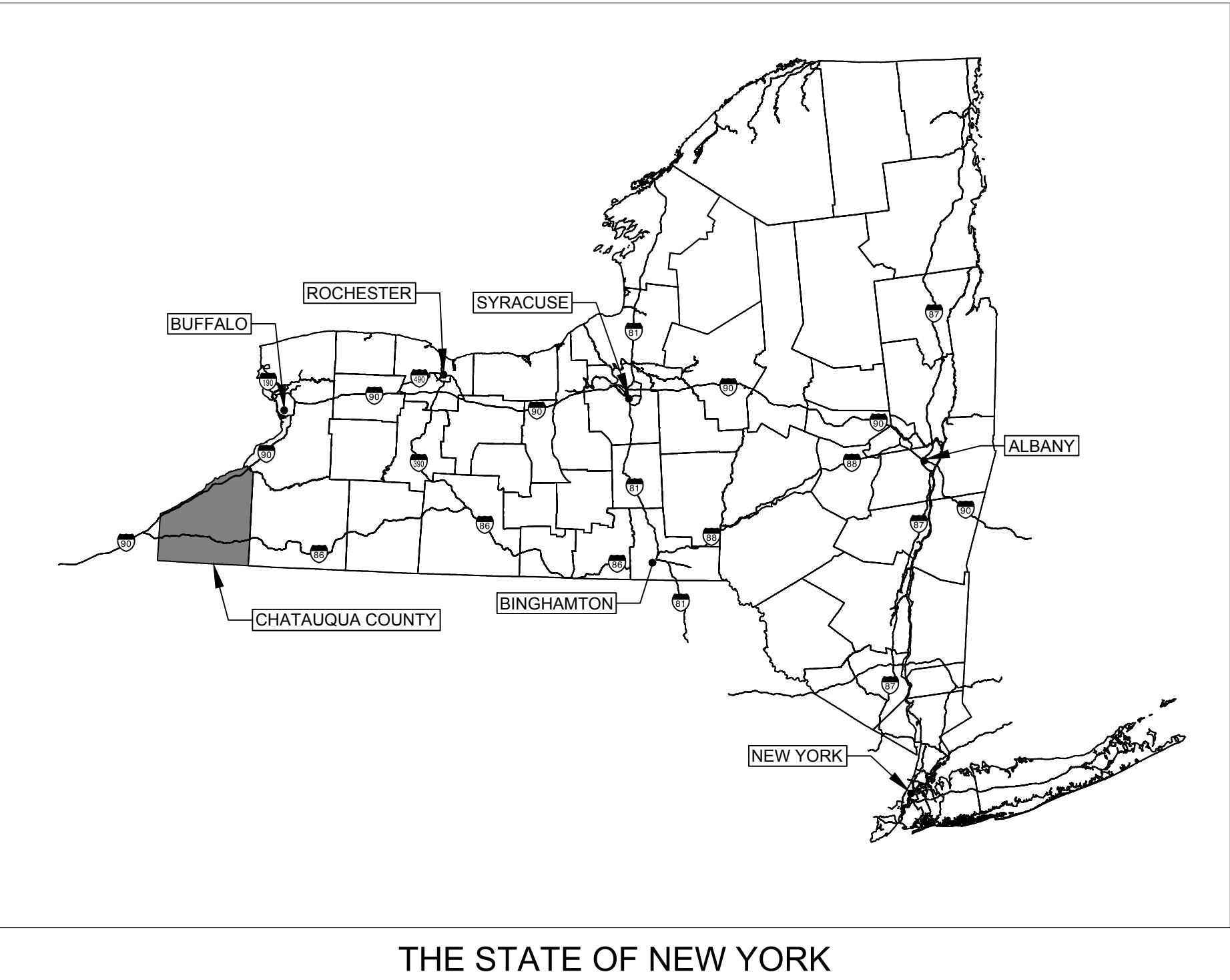
PREPARED BY: MOTT MACDONALD NY, INC

ISSUE DATE: JANUARY 18, 2022

ISSUE STATUS: RE-ISSUED FOR 94-C

PROJECT DATA:

LOCATION: CHAUTAUQUA COUNTY, NY  
PROJECTION: STATE PLANE NAD 83 (NY83-WF)  
POWER GENERATED: 270 MWac



F	01/18/2022	EHK	ISSUED FOR 94-C	JS	RA
E	12/08/2021	EHK	ISSUED FOR REVIEW	JS	RA
D	07/20/2021	EHK	ISSUED FOR REVIEW	JS	RA
C	07/02/2021	EHK	ISSUED FOR REVIEW	JAB	JAB
B	05/18/2021	EHK	ISSUED FOR REVIEW		JB
A	01/29/2021	EHK	ISSUED FOR REVIEW	BG	JB
Rev	Date	Drawn	Description	Ch'k'd	App'd

M

MOTT MACDONALD

101 Station Drive  
Suite 130  
Westwood, MA 02090  
United States  
T +1 (781) 915-0015  
F +1 (781) 915-0001  
W www.mottmac.com

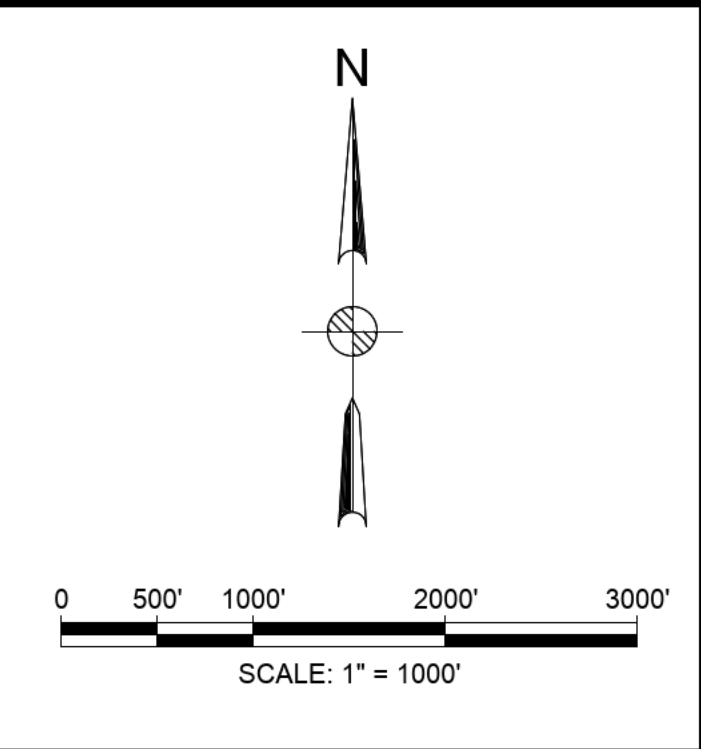
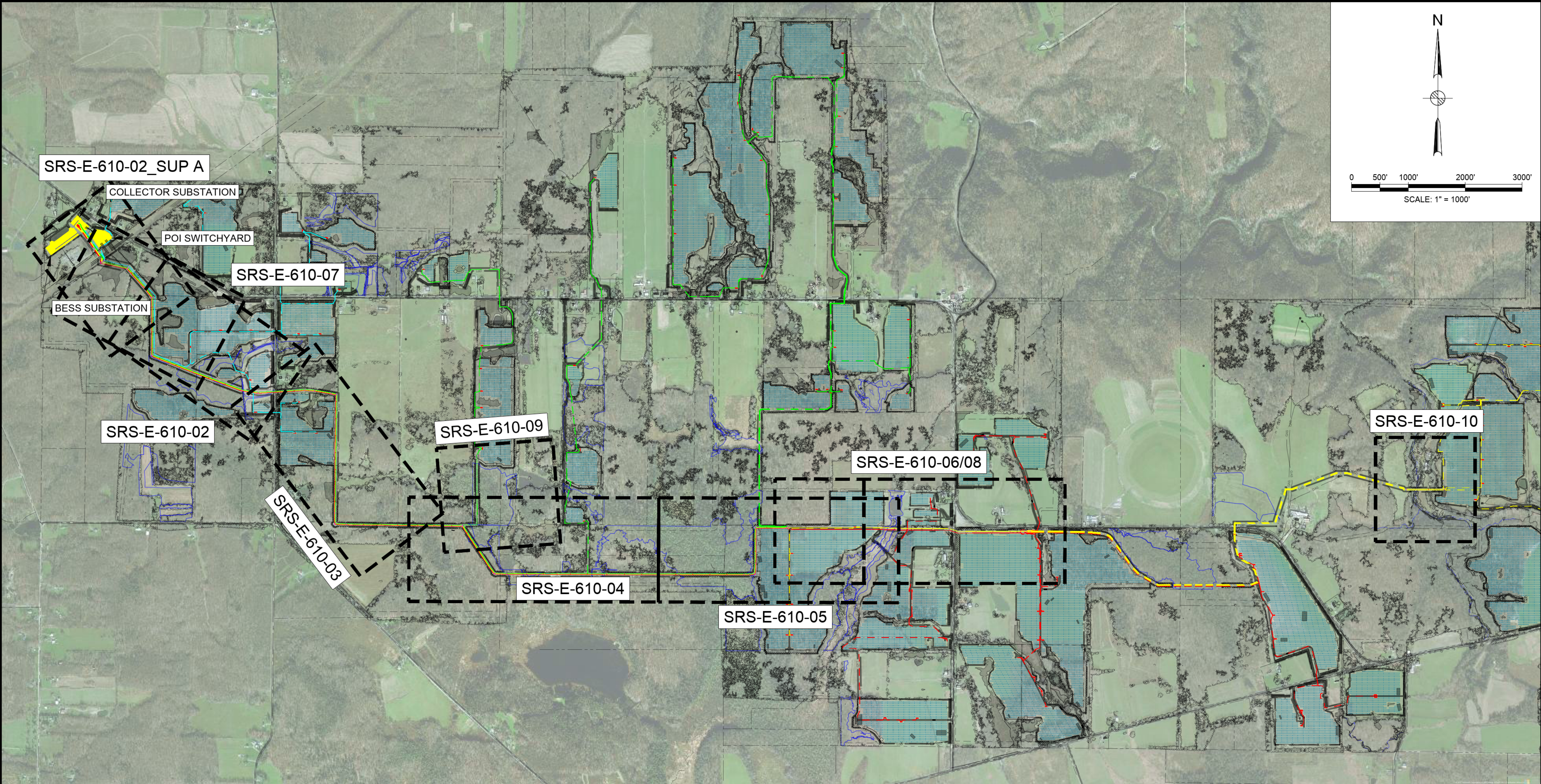
Client

Title  
SOUTH RIPLEY SOLAR  
MVAC ELECTRICAL COLLECTOR SYSTEM  
COVER SHEET AND DRAWING INDEX

PRELIMINARY NOT FOR CONSTRUCTION REPLACE WITH ENGINEERS STAMP AT CONSTRUCTION AND/OR FABRICATION	Designed	EHK	Eng check	JS
	Drawn	EHK	Approved	RA
	Scale at ANSI D Not to Scale		Date 01/18/2022	Rev F
	Drawing Number			
	SRS-E-600-00			

CONCEPTUAL - NOT FOR CONSTRUCTION





Key Map

Symbol Legend

Plan View Legend (Collector System Feeders organized by color)

PROFILE LINE LEGEND

- Notes:
- POLE LOCATIONS ARE INDICATIVE ONLY AND BASED ON LIDAR DATA PROVIDED ON 05/18/2021 AND ESRI WMS IMAGES.
  - THE COORDINATE SYSTEM IS NAD83 (3103), NEW YORK WEST, US SURVEY FEET.
  - PHASE CONDUCTOR AND DOWNLOADS INCORPORATE A TWIN 795 KCMIL 26/7 STRAND DRAKE ACSR CONDUCTOR, 36 FIBRE ALUMACORE OPGW AND 1/2 INCH 7-STRAND EHS.
  - PHASE CONDUCTOR IS DISPLAYED AT EMERGENCY TEMPERATURE OF 212°F AND OPGW AND EHS AT 120°F.
  - GROUND CLEARANCE LINE IS SHOWN AT 21 FT ABOVE GROUND.
  - ALL DIMENSIONS ARE IN FEET UNLESS OTHERWISE STATED.
  - DESIGN TENSIONS:  
795 ACSR 26/7 STRAND DRAKE  
25% CREEP @ NESC TENSION LIMIT 261H1C  
  
36 FIBRE AFL AC/20/47/607 AND 1/2 INCH 7 STRAND EHS  
20% CREEP @ NESC TENSION LIMIT 250B HEAVY  
  
SLACK SPAN 795 ACSR 26/7 STRAND DRAKE  
2000 LBS INITIAL @ NESC 250B HEAVY  
  
SLACK SPAN 36 FIBRE AFL AC/20/47/607 AND 1/2 INCH 7-STRAND EHS  
1000 LBS INITIAL @ NESC 250B HEAVY
  - LOCATIONS 3 TO 67: TRIPLE CIRCUIT  
POLE 1, 2, 3, AND 68 TO 122: SINGLE CIRCUIT

D	01/18/2022	EHK	ISSUED FOR 94C	JS	RA
C	07/20/2021	JD	ISSUED FOR REVIEW	EHK	JS
B	07/02/2021	JD	ISSUED FOR REVIEW	EHK	JAB
A	01/29/2021	EHK	ISSUED FOR REVIEW	BG	JB
Rev	Date	Drawn	Description	Ch'k'd	App'd

MOTT MACDONALD

101 Station Drive  
Suite 130  
Westwood, MA 02090  
United States  
T +1 (781) 915-0015  
F +1 (781) 915-0001  
W www.mottmac.com

Client

G

South Ripley  
SOLAR PROJECT

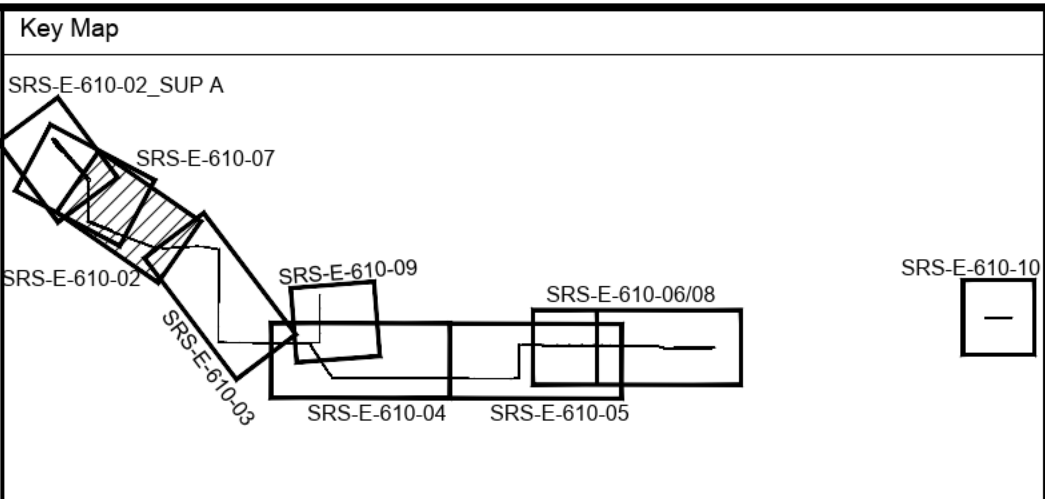
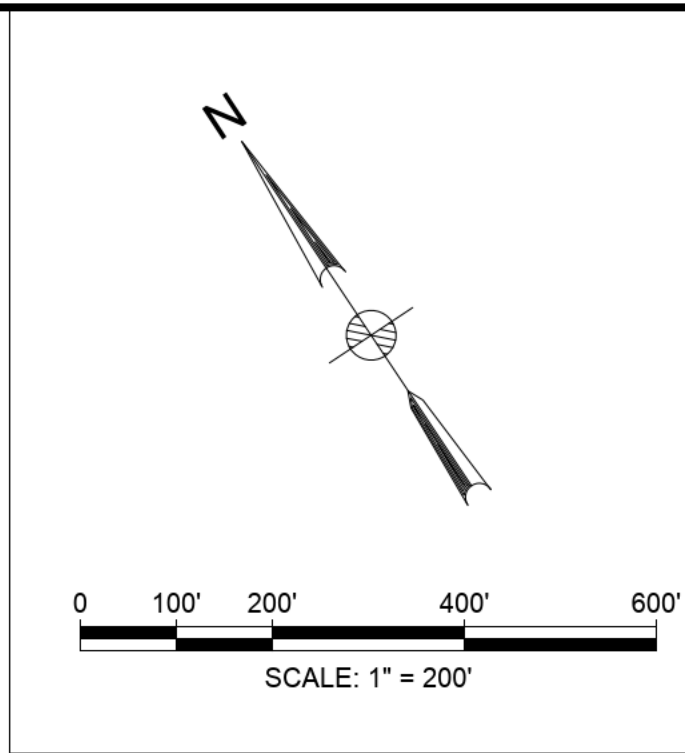
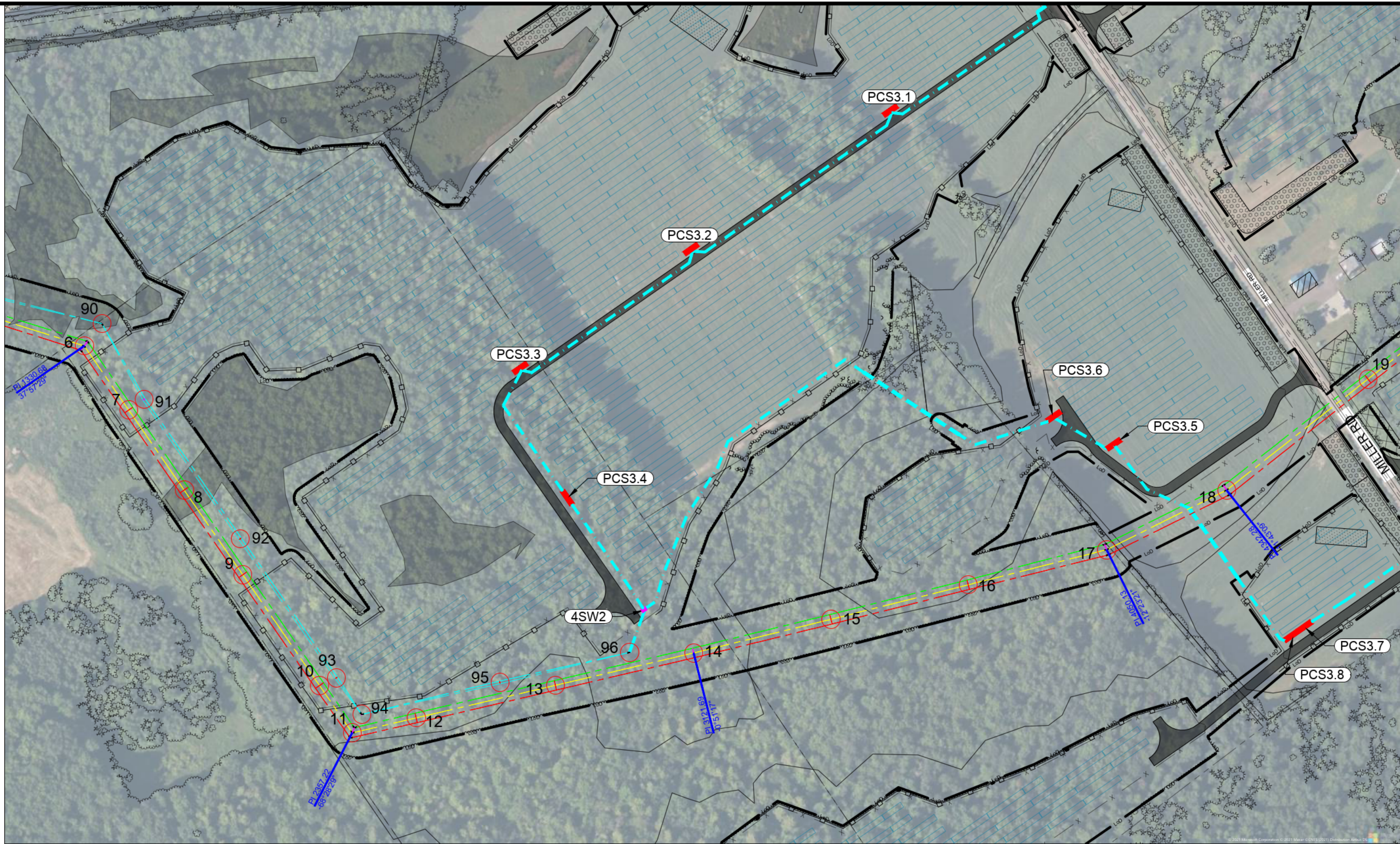
Title

SOUTH RIPLEY SOLAR  
34.5KV COLLECTOR SYSTEM  
PLAN AND PROFILE  
KEY MAP

PRELIMINARY NOT FOR CONSTRUCTION REPLACE WITH ENGINEERS STAMP AT CONSTRUCTION AND/OR FABRICATION	Designed	JD	Eng check	EHK
	Drawn	JD	Approved	JAB
	Scale at ANSI D As Noted		Date	Rev
			01/18/2022	D
	Drawing Number		SRS-E-610-01	

CONCEPTUAL - NOT FOR CONSTRUCTION





Symbol Legend

34.5KV STRUCTURE	JUNCTION BOX	(PCSXX.XX) PCS ID
20 STRUCTURE & ID	PAD MOUNTED SWITCHGEAR	

Plan View Legend (Collector System Feeders organized by color)

AERIAL	IN CONDUIT	IN TRENCH	
---	---	---	FEEDER 1 CABLES
---	---	---	FEEDER 2 CABLES
---	---	---	FEEDER 3 CABLES
---	---	---	FEEDER 4 CABLES
---	---	---	34.5KV BESS CABLES

PROFILE LINE LEGEND

---	795 ACSR 26/7 STRAND DRAKE
---	36 FIBRE AFL AC/20/47/607 OPGW
---	1/2-INCH 7-STRAND EHS
---	8IN PVC CONCRETE ENCASED CONDUIT
---	EXISTING/FINAL GRADE
---	EXISTING GRADE TO BE REMOVED
---	VERTICAL CLEARANCE LINE (21')

- Notes:
- POLE LOCATIONS ARE INDICATIVE ONLY AND BASED ON LIDAR DATA PROVIDED ON 05/18/2021 AND ESRI WMS IMAGES.
  - THE COORDINATE SYSTEM IS NAD83 (3103), NEW YORK WEST, US SURVEY FEET.
  - PHASE CONDUCTOR AND DOWNLEADS INCORPORATE A TWIN 795 KCMIL 26/7 STRAND DRAKE ACSR CONDUCTOR, 36 FIBRE ALUMACORE OPGW AND 1/2 INCH 7-STRAND EHS.
  - PHASE CONDUCTOR IS DISPLAYED AT EMERGENCY TEMPERATURE OF 212°F AND OPGW AND EHS AT 120°F.
  - GROUND CLEARANCE LINE IS SHOWN AT 21 FT ABOVE GROUND.
  - ALL DIMENSIONS ARE IN FEET UNLESS OTHERWISE STATED.
  - DESIGN TENSIONS:  
795 ACSR 26/7 STRAND DRAKE  
25% CREEP @ NESC TENSION LIMIT 261H1C  
  
36 FIBRE AFL AC/20/47/607 AND 1/2 INCH 7 STRAND EHS  
20% CREEP @ NESC TENSION LIMIT 250B HEAVY  
  
SLACK SPAN 795 ACSR 26/7 STRAND DRAKE  
2000 LBS INITIAL @ NESC 250B HEAVY  
  
SLACK SPAN 36 FIBRE AFL AC/20/47/607 AND 1/2 INCH 7-STRAND EHS  
1000 LBS INITIAL @ NESC 250B HEAVY
  - LOCATIONS 3 TO 67: TRIPLE CIRCUIT  
POLE 1, 2, 3, AND 68 TO 122: SINGLE CIRCUIT

Rev	Date	Drawn	Description	Ch'k'd	App'd
D	01/18/2022	EHK	ISSUED FOR 94C	EHK	JS
C	07/20/2021	JD	ISSUED FOR REVIEW	EHK	JAB
B	07/02/2021	JD	ISSUED FOR REVIEW	EHK	JAB
A	01/29/2021	EHK	ISSUED FOR REVIEW	BG	JB

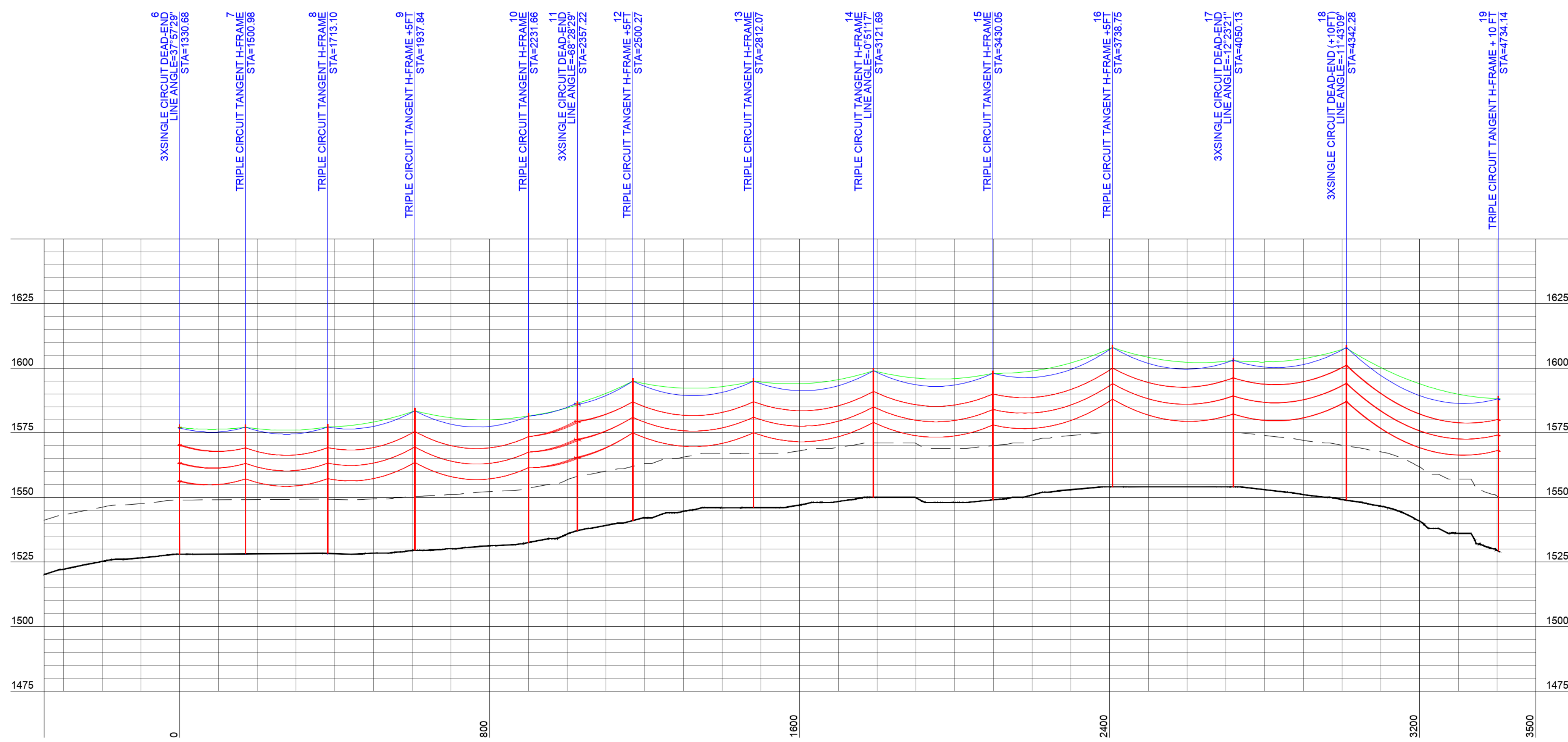
101 Station Drive  
Suite 130  
Westwood, MA 02090  
United States  
T +1 (781) 915-0015  
F +1 (781) 915-0001  
W www.mottmac.com

Client

Title

**SOUTH RIPLEY SOLAR  
34.5KV COLLECTOR SYSTEM  
PLAN AND PROFILE  
SHEET 1**

PRELIMINARY NOT FOR CONSTRUCTION REPLACE WITH ENGINEERS STAMP AT CONSTRUCTION AND/OR FABRICATION	Designed	EK	Eng check	JS
	Drawn	EK	Approved	RA
	Scale at ANSI D As Noted	Date 01/18/2022	Rev D	
	Drawing Number	SRS-E-610-02		



CONCEPTUAL - NOT FOR CONSTRUCTION