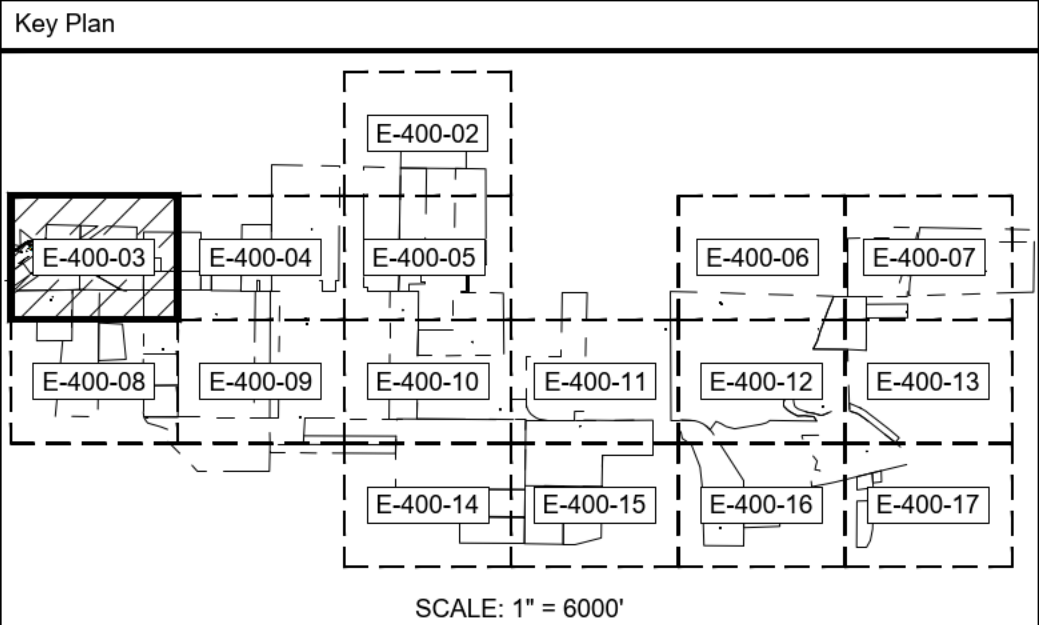


Legend			
	TAX PARCEL BOUNDARY		1 MVA STEP-UP XFMR
	FENCE		2 MVA STEP-UP XFMR
	GRAVEL ROAD		3 MVA STEP-UP XFMR
	NYSDEC WETLANDS		JUNCTION BOX
	FEDERAL WETLANDS		BORING AREAS
	VEGETATION BUFFER		PAD MOUNTED SWITCHGEAR
	REAMS		PCS ID
	SETBACK		CONDUIT ID
	NYSDEC SETBACK		
	GAS LINE		
	34.5KV AERIAL LINE		
	STRUCTURE & ID		
	PERMANENT EASEMENT FOR AERIAL LINE		
<u>AERIAL</u>	<u>IN CONDUIT</u>	<u>IN TRENCH</u>	
			FEEDER 1 CABLES
			FEEDER 2 CABLES
			FEEDER 3 CABLES
			FEEDER 4 CABLES
			34.5KV BESS CABLES



Rev	Date	Drawn	Description	Ch'kd	App'd
C	01/07/22	JLL	ISSUED FOR 94-C	CS	JS
B	12/08/21	JLL	ISSUED FOR REVIEW	CS	JS
A	11/24/21	JLL	ISSUED FOR REVIEW	CS	JS

**M**  
**MOTT**  
**MACDONALD**

101 Station Drive  
Suite 130  
Westwood, MA 02090  
United States  
**T** +1 (781) 915-0015  
**F** +1 (781) 915-0001  
**W** www.mottmac.com

Client

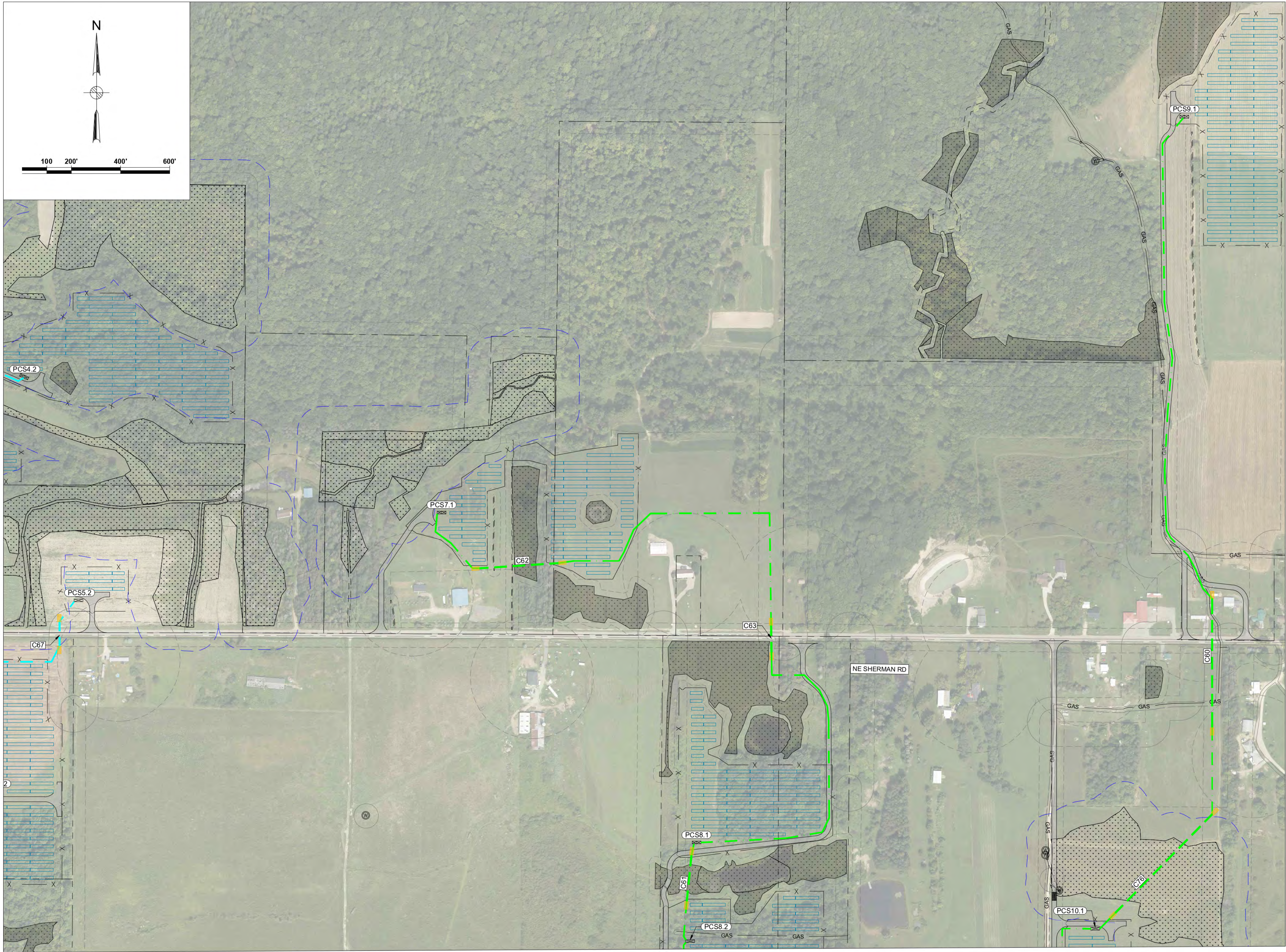
Title

**SOUTH RIPLEY SOLAR  
ELECTRICAL SOLAR  
ARRAY PARCEL DETAIL 2 -  
SUPPLEMENTAL A**

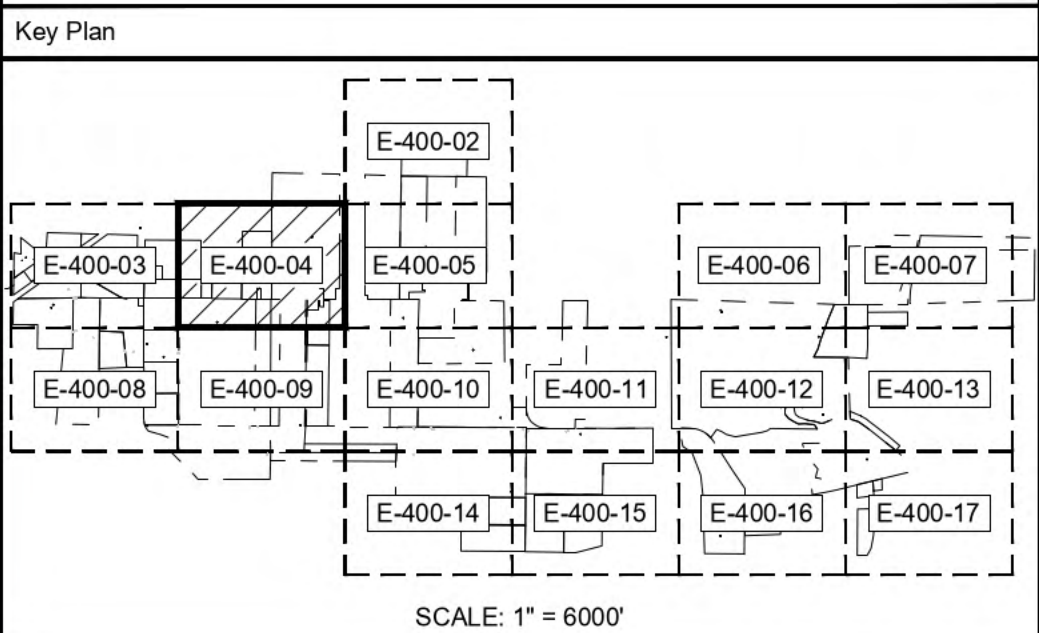
PRELIMINARY NOT FOR CONSTRUCTION REPLACE WITH ENGINEERS STAMP AT CONSTRUCTION AND/OR FABRICATION	Designed	BG	Eng check	CS
	Drawn	JLL	Approved	JS
	Dwg check	JLL	Project Mngr	RA
	Scale at ANSI D		Date	Rev
			01/07/22	C
Drawing Number		SRS-E-400-03_SUP_A		

© Mott MacDonald  
It is a violation of New York state Education Law for any person, unless acting under the direction of a licensed engineer to alter this document in any way.  
This document is issued for the party which commissioned it and for specific purposes connected with the captioned project only. It should not be relied upon by any other party or used for any other purpose.  
We accept no responsibility for the consequences of this document being relied upon by any other party, or being used for any other purpose, or containing any error or omission which is due to an error or omission in data supplied to us by other parties.

CONCEPTUAL - NOT FOR CONSTRUCTION



Legend			
	TAX PARCEL BOUNDARY		1 MVA STEP-UP XFMR
	FENCE		2 MVA STEP-UP XFMR
	GRAVEL ROAD		3 MVA STEP-UP XFMR
	NYSDEC WETLANDS		JUNCTION BOX
	FEDERAL WETLANDS		BORING AREAS
	STREAMS		PAD MOUNTED SWITCHGEAR
	SETBACK		PCS ID
	NYSDEC SETBACK		CONDUIT ID
	GAS		
	34.5KV AERIAL LINE		
	STRUCTURE & ID		
	PERMANENT EASEMENT FOR AERIAL LINE		
	AERIAL		FEEDER 1 CABLES
	IN CONDUIT		FEEDER 2 CABLES
			FEEDER 3 CABLES
			FEEDER 4 CABLES
			34.5KV BESS CABLES



F	07/23/2021	JLL	ISSUED FOR 94-C	JS	JAB
E	07/14/2021	JLL	ISSUED FOR REVIEW	JS	JAB
D	06/18/2021	JLL	ISSUED FOR REVIEW	DD	JAB
C	06/04/2021	JLL	ISSUED FOR REVIEW	DD	JAB
B	05/21/2021	JLL	ISSUED FOR REVIEW	DD	JAB
Rev	Date	Drawn	Description	Ch'k'd	App'd

101 Station Drive  
Suite 130  
Westwood, MA 02090  
United States  
T +1 (781) 915-0015  
F +1 (781) 915-0001  
W www.mottmac.com

Client

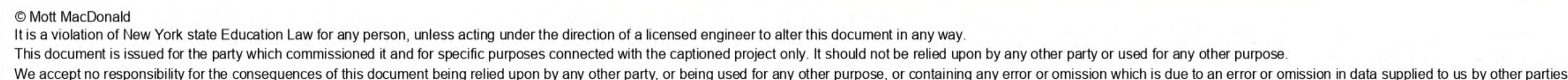
Title

SOUTH RIPLEY SOLAR  
ELECTRICAL SOLAR  
ARRAY PARCEL DETAIL 3

PRELIMINARY NOT FOR CONSTRUCTION REPLACE WITH ENGINEERS STAMP AT CONSTRUCTION AND/OR FABRICATION	Designed	BG	Eng check	JS
	Drawn	JLL	Approved	JAB
	Dwg check		Project Mngr	RA
	Scale at ANSI D		Date	Rev
	1" = 200'		07/23/2021	F
Drawing Number		SRS-E-400-04		

© Mott MacDonald  
It is a violation of New York state Education Law for any person, unless acting under the direction of a licensed engineer to alter this document in any way.  
This document is issued for the party which commissioned it and for specific purposes connected with the captioned project only. It should not be relied upon by any other party or used for any other purpose.  
We accept no responsibility for the consequences of this document being relied upon by any other party, or being used for any other purpose, or containing any error or omission which is due to an error or omission in data supplied to us by other parties.

CONCEPTUAL - NOT FOR CONSTRUCTION



CONCEPTUAL - NOT FOR CONSTRUCTION

Key Plan

SCALE: 1" = 600'

F	07/23/2021	JLL	ISSUED FOR 94-C	JS	JAB
E	07/14/2021	JLL	ISSUED FOR REVIEW	JS	JAB
D	06/18/2021	JLL	ISSUED FOR REVIEW	DD	JAB
C	06/04/2021	JLL	ISSUED FOR REVIEW	DD	JAB
B	05/21/2021	JLL	ISSUED FOR REVIEW	DD	JAB
Rev	Date	Drawn	Description	Ch'k'd	App'd

**M M**  
**MOTT  
MACDONALD**

101 Station Drive  
Suite 130  
Westwood, MA 02090  
United States  
**T** +1 (781) 915-0015  
**F** +1 (781) 915-0001  
**W** [www.mottmac.com](http://www.mottmac.com)

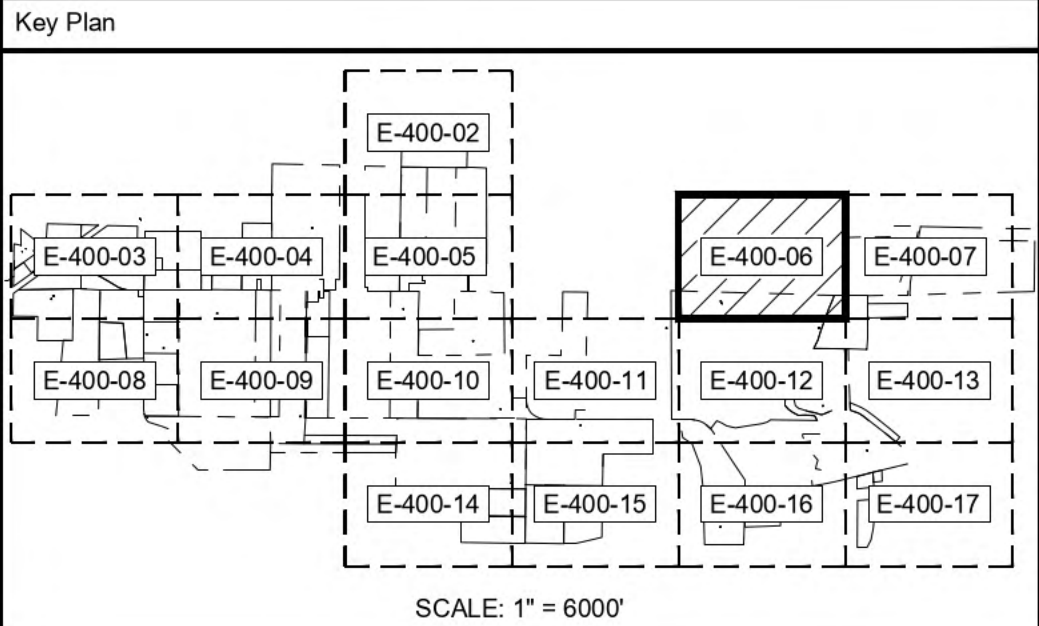
Client	 <b>South Ripley</b> SOLAR PROJECT
--------	--

Title	SOUTH RIPLEY SOLAR ELECTRICAL SOLAR ARRAY PARCEL DETAIL 4
-------	---

<p style="text-align: center;">PRELIMINARY NOT FOR CONSTRUCTION</p> <p style="text-align: center;">REPLACE WITH ENGINEERS STAMP AT CONSTRUCTION AND/OR FABRICATION</p>	Designed	BG	Eng check	JS
	Drawn	JLL	Approved	JAB
	Dwg check		Project Mngr	RA
	Scale at ANSI D		Date	Rev
	1" = 200'		07/23/2021	F
Drawing Number				
SRS-E-400-05				



Legend			
	TAX PARCEL BOUNDARY		1 MVA STEP-UP XFMR
	FENCE		2 MVA STEP-UP XFMR
	GRAVEL ROAD		3 MVA STEP-UP XFMR
	NYSDEC WETLANDS		JUNCTION BOX
	FEDERAL WETLANDS		BORING AREAS
	STREAMS		PAD MOUNTED SWITCHGEAR
	SETBACK		PCS ID
	NYSDEC SETBACK		CONDUIT ID
	GAS		34.5KV AERIAL LINE
	GAS LINE		STRUCTURE & ID
	34.5KV AERIAL LINE		PERMANENT EASEMENT FOR AERIAL LINE
	STRUCTURE & ID		
	PERMANENT EASEMENT FOR AERIAL LINE		
	AERIAL		IN CONDUIT
	IN CONDUIT		IN TRENCH
	FEEDER 1 CABLES		FEEDER 2 CABLES
	FEEDER 3 CABLES		FEEDER 4 CABLES
	34.5KV BESS CABLES		



F	07/23/2021	JLL	ISSUED FOR 94-C	JS	JAB
E	07/14/2021	JLL	ISSUED FOR REVIEW	JS	JAB
D	06/18/2021	JLL	ISSUED FOR REVIEW	DD	JAB
C	06/04/2021	JLL	ISSUED FOR REVIEW	DD	JAB
B	05/21/2021	JLL	ISSUED FOR REVIEW	DD	JAB
Rev	Date	Drawn	Description	Ch'k'd	App'd



**MOTT  
MACDONALD**

101 Station Drive  
Suite 130  
Westwood, MA 02090  
United States  
**T** +1 (781) 915-0015  
**F** +1 (781) 915-0001  
**W** www.mottmac.com

Client



Title

**SOUTH RIPLEY SOLAR  
ELECTRICAL SOLAR  
ARRAY PARCEL DETAIL 5**

PRELIMINARY NOT FOR CONSTRUCTION REPLACE WITH ENGINEERS STAMP AT CONSTRUCTION AND/OR FABRICATION	Designed	BG	Eng check	JS
	Drawn	JLL	Approved	JAB
	Dwg check		Project Mngr	RA
	Scale at ANSI D		Date	Rev
		1" = 200'	07/23/2021	F
Drawing Number		SRS-E-400-06		

CONCEPTUAL - NOT FOR CONSTRUCTION