

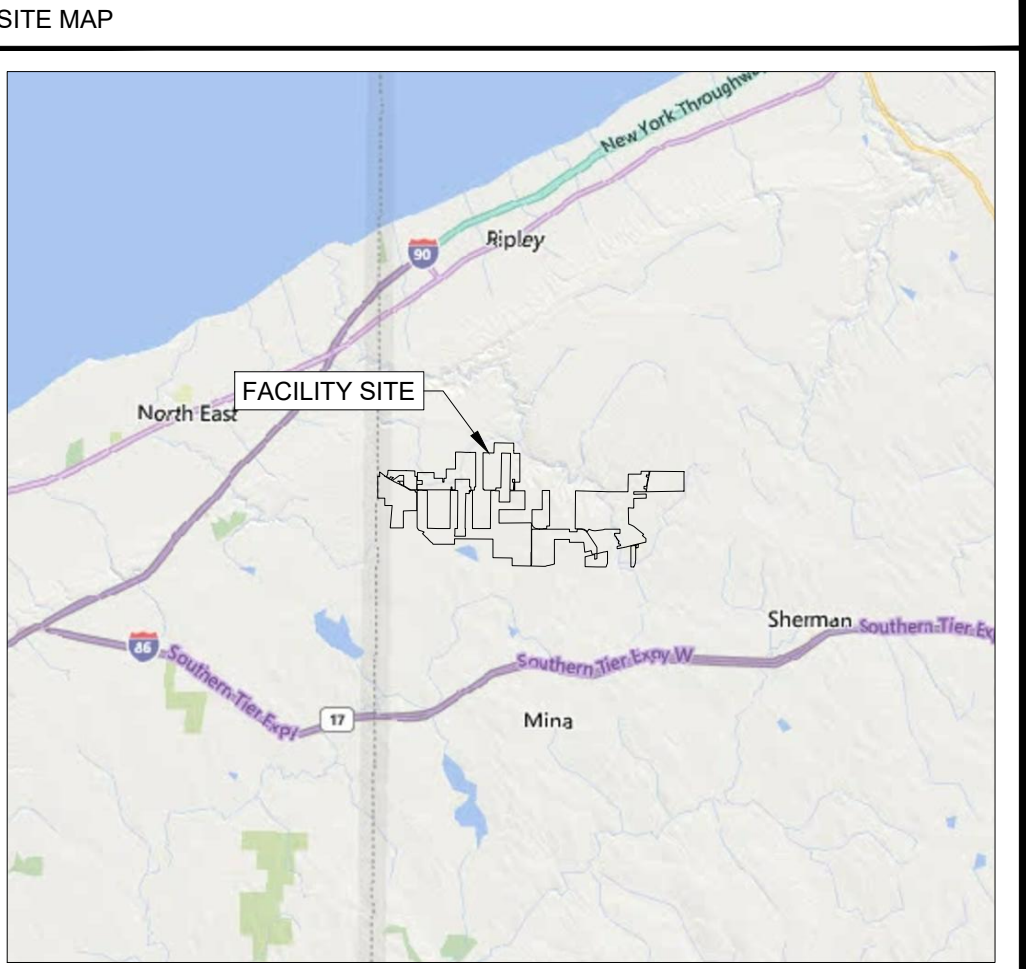
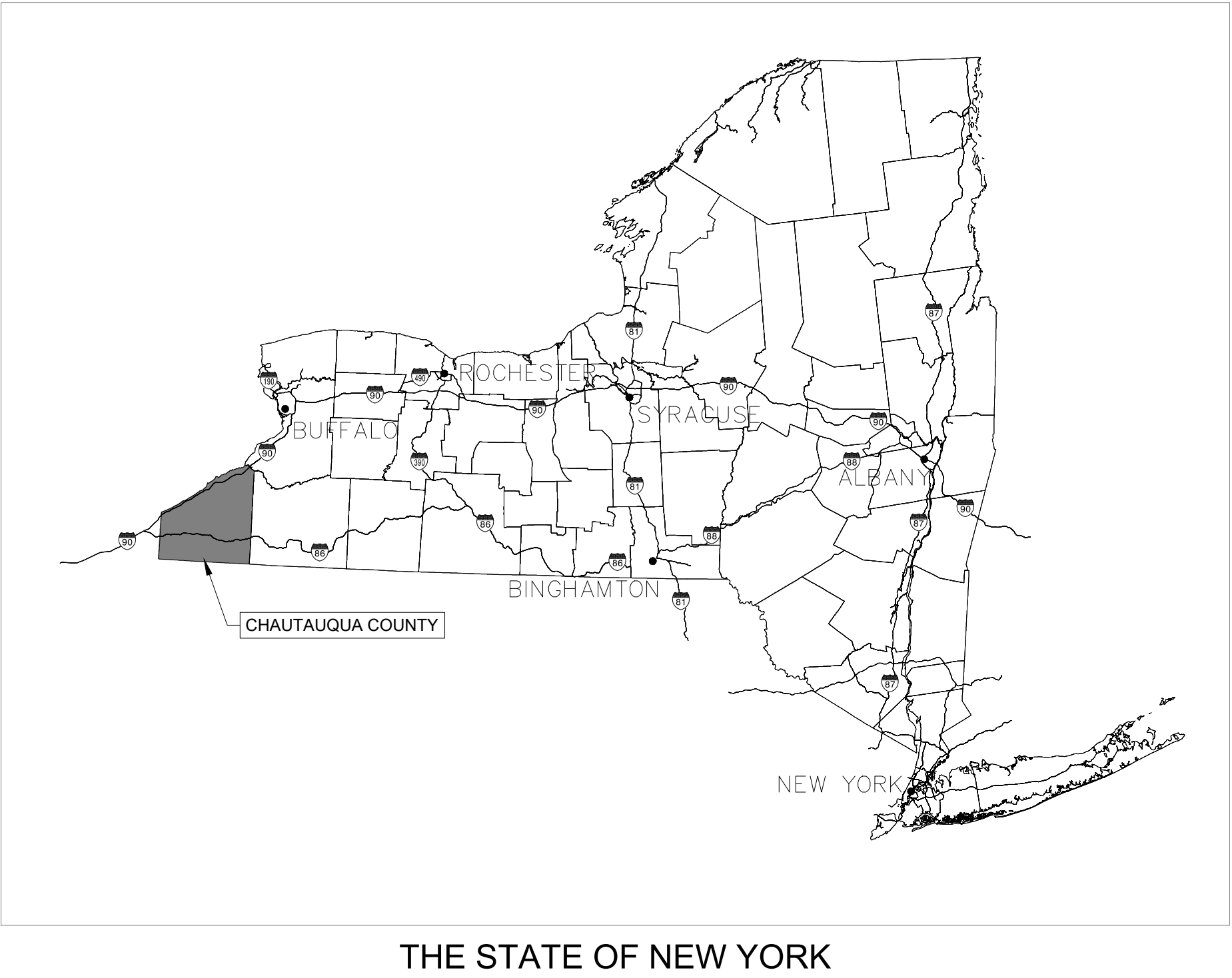
Solar Layout																					
Dwg. No.	Drawing Title	Date	Rev.	Date	Rev.	Date	Rev.	Date	Rev.	Date	Rev.	Date	Rev.	Date	Rev.	Date	Rev.	Date	Rev.	Date	Rev.
SRS-E-400-00	COVER SHEET	01/29/21	A	05/21/21	B	06/04/21	C	06/18/21	D	07/14/21	E	07/23/21	F	12/08/21	G	01/07/22	H				
SRS-E-400-01_SUP A	OVERALL SITE PLAN - SUPPLEMENTAL A	11/24/21	A	12/08/21	B	01/07/22	C														
SRS-E-400-02	ARRAY PARCEL DETAILS 1	01/29/21	A	05/21/21	B	06/04/21	C	06/18/21	D	07/14/21	E	07/23/21	F								
SRS-E-400-03_SUP A	ARRAY PARCEL DETAILS 2 - SUPPLEMENTAL A	11/24/21	A	12/08/21	B	01/07/21	C														
SRS-E-400-04	ARRAY PARCEL DETAILS 3	01/29/21	A	05/21/21	B	06/04/21	C	06/18/21	D	07/14/21	E	07/23/21	F								
SRS-E-400-05	ARRAY PARCEL DETAILS 4	01/29/21	A	05/21/21	B	06/04/21	C	06/18/21	D	07/14/21	E	07/23/21	F								
SRS-E-400-06	ARRAY PARCEL DETAILS 5	01/29/21	A	05/21/21	B	06/04/21	C	06/18/21	D	07/14/21	E	07/23/21	F								
SRS-E-400-07	ARRAY PARCEL DETAILS 6	01/29/21	A	05/21/21	B	06/04/21	C	06/18/21	D	07/14/21	E	07/23/21	F								
SRS-E-400-08	ARRAY PARCEL DETAILS 7	01/29/21	A	05/21/21	B	06/04/21	C	06/18/21	D	07/14/21	E	07/23/21	F								
SRS-E-400-09	ARRAY PARCEL DETAILS 8	01/29/21	A	05/21/21	B	06/04/21	C	06/18/21	D	07/14/21	E	07/23/21	F								
SRS-E-400-10	ARRAY PARCEL DETAILS 9	01/29/21	A	05/21/21	B	06/04/21	C	06/18/21	D	07/14/21	E	07/23/21	F								
SRS-E-400-11	ARRAY PARCEL DETAILS 10	01/29/21	A	05/21/21	B	06/04/21	C	06/18/21	D	07/14/21	E	07/23/21	F								
SRS-E-400-12	ARRAY PARCEL DETAILS 11	01/29/21	A	05/21/21	B	06/04/21	C	06/18/21	D	07/14/21	E	07/23/21	F								
SRS-E-400-13	ARRAY PARCEL DETAILS 12	01/29/21	A	05/21/21	B	06/04/21	C	06/18/21	D	07/14/21	E	07/23/21	F								
SRS-E-400-14	ARRAY PARCEL DETAILS 13	01/29/21	A	05/21/21	B	06/04/21	C	06/18/21	D	07/14/21	E	07/23/21	F								
SRS-E-400-15	ARRAY PARCEL DETAILS 14	01/29/21	A	05/21/21	B	06/04/21	C	06/18/21	D	07/14/21	E	07/23/21	F								
SRS-E-400-16	ARRAY PARCEL DETAILS 15	01/29/21	A	05/21/21	B	06/04/21	C	06/18/21	D	07/14/21	E	07/23/21	F								
SRS-E-400-17	ARRAY PARCEL DETAILS 16	01/29/21	A	05/21/21	B	06/04/21	C	06/18/21	D	07/14/21	E	07/23/21	F								
SRS-E-401-01	TYPICAL DC ONE LINE	01/29/21	A	05/21/21	B	06/04/21	C	06/18/21	D	07/14/21	E	07/23/21	F								
SRS-E-402-01	PV TYPICAL	01/29/21	A	05/21/21	B	06/04/21	C	06/18/21	D	07/14/21	E	07/23/21	F								
SRS-E-403-01	TRANSFORMER STATION SECTIONS AND ELEVATIONS	01/29/21	A	05/21/21	B	06/04/21	C	06/18/21	D	07/14/21	E	07/23/21	F								
SRS-E-404-01	GROUNDING DETAILS	01/29/21	A	05/21/21	B	06/04/21	C	06/18/21	D	07/14/21	E	07/23/21	F								
SRS-E-405-01	PCS COMMUNICATION DIAGRAM	01/29/21	A	05/21/21	B	06/04/21	C	06/18/21	D	07/14/21	E	07/23/21	F								
SRS-E-406-01	EQUIPMENT SPECIFICATIONS	01/29/21	A	05/21/21	B	06/04/21	C	06/18/21	D	07/14/21	E	07/23/21	F								
SRS-E-407-01	TYPICAL DC TRENCH DETAILS	01/29/21	A	05/21/21	B	06/04/21	C	06/18/21	D	07/14/21	E	07/23/21	F								
SRS-E-408-01	TYPICAL DC TRENCH DETAILS	01/29/21	A	05/21/21	B	06/04/21	C	06/18/21	D	07/14/21	E	07/23/21	F								
SRS-E-409-01_SUP A	EXTERIOR O&M STORAGE - SUPPLEMENTAL A	12/08/21	A																		
SRS-BESS-GA-001_SUP A	BESS GENERAL ARRANGEMENT - SUPPLEMENTAL A	11/24/21	A	12/08/21	B	01/07/21	C														
SRS-BESS-E-100_SUP A	BESS ELEVATION - SUPPLEMENTAL A	12/08/21	A																		
SRS-BESS-LP-001_SUP A	YARD LIGHTNING PLAN - SUPPLEMENTAL A	11/24/21	A	12/08/21	B	12/08/21	C	01/06/22	D												

\*\* THESE DESIGN DRAWINGS HAVE BEEN CREATED AT THE DIRECTION OF A PROFESSIONAL ENGINEER LICENSED IN THE STATE OF NEW YORK.  
 ENGINEER OF RECORD: JOSH BERKOW, LICENSE# 089635

# SOUTH RIPLEY SOLAR PROJECT

PREPARED FOR: CONNECTGEN CHAUTAUQUA COUNTY LLC  
 PREPARED BY: MOTT MACDONALD NY, INC  
 ISSUE DATE: JANUARY 7, 2022  
 ISSUE STATUS: RE- ISSUED FOR 94-C

PROJECT DATA:  
 LOCATION: CHAUTAUQUA COUNTY, NY  
 PROJECTION: STATE PLANE NAD 83 (NY83-WF)  
 POWER GENERATED: 270 MWac



H	01/07/2022	JLL	RE-ISSUED FOR 94-C	JS	JAB
G	12/08/2021	JLL	RE-ISSUED FOR 94-C	JS	JAB
F	07/23/2021	JLL	ISSUED FOR 94-C	JS	JAB
E	07/14/2021	JLL	ISSUED FOR REVIEW	JS	JAB
D	06/18/2021	JLL	ISSUED FOR REVIEW	DD	JAB
C	06/04/2021	JLL	ISSUED FOR REVIEW	DD	JAB
Rev	Date	Drawn	Description	Ch'k'd	App'd

M

M

MOTT MACDONALD

101 Station Drive  
Suite 130  
Westwood, MA 02090  
United States  
T +1 (781) 915-0015  
F +1 (781) 915-0001  
W www.mottmac.com

Client

G

South Ripley

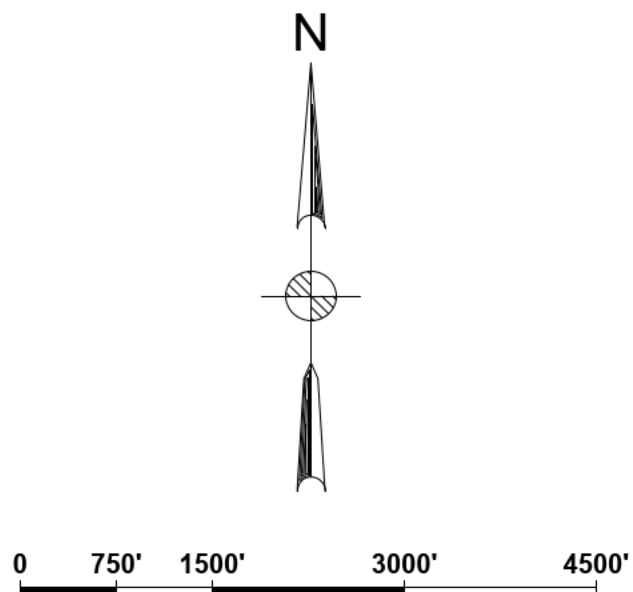
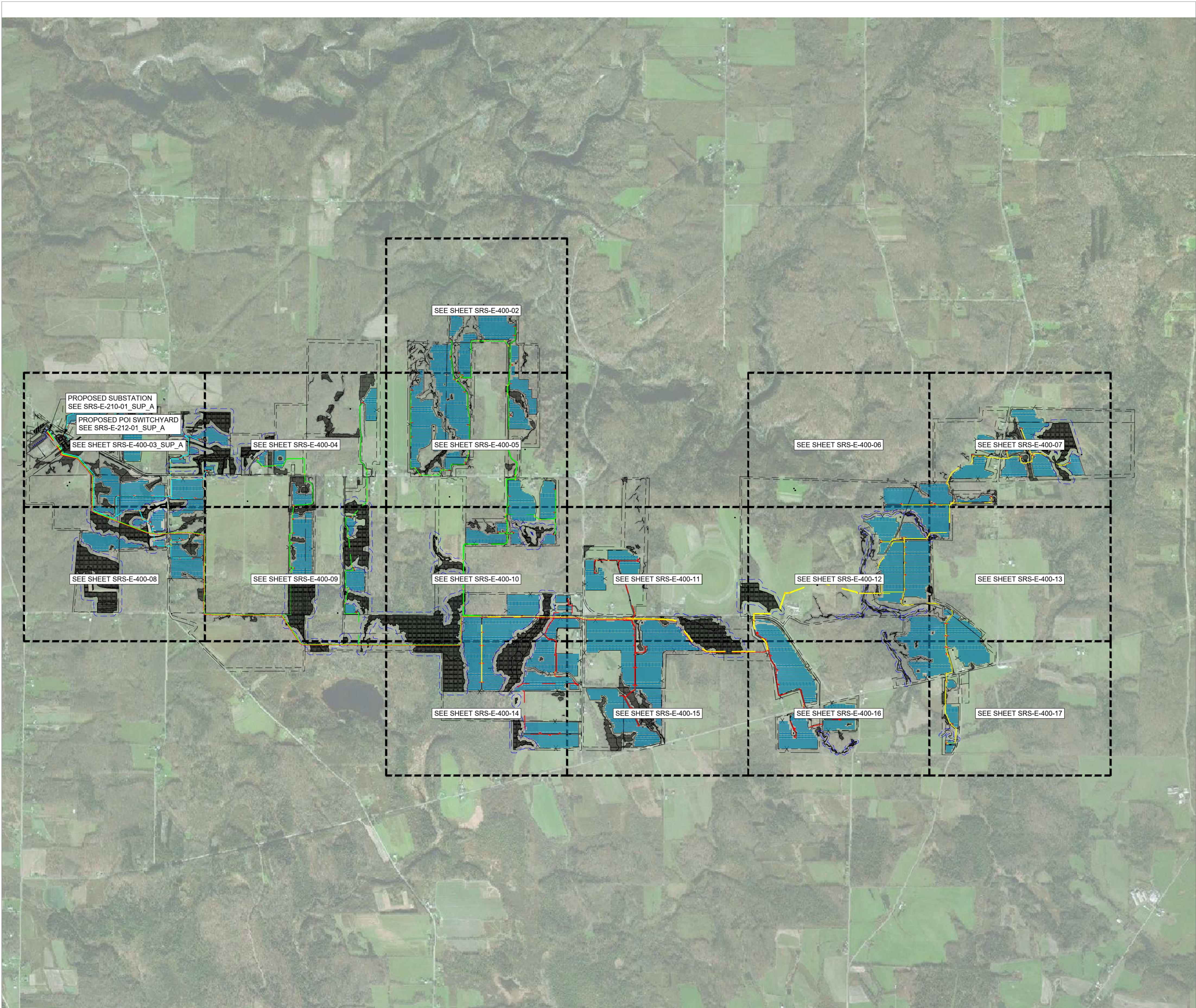
SOLAR PROJECT

Title SOUTH RIPLEY SOLAR  
 ELECTRICAL SOLAR  
 COVER SHEET

PRELIMINARY NOT FOR CONSTRUCTION REPLACE WITH ENGINEERS STAMP AT CONSTRUCTION AND/OR FABRICATION	Designed	BG	Eng check	JS
	Drawn	JLL	Approved	JAB
	Dwg check		Project Mngr	RA
	Scale at ANSI D		Date	Rev
		NONE	01/07/2022	H
Drawing Number		SRS-E-400-00		

CONCEPTUAL - NOT FOR CONSTRUCTION





© Mott MacDonald  
It is a violation of New York state Education Law for any person, unless acting under the direction of a licensed engineer to alter this document in any way.  
This document is issued for the party which commissioned it and for specific purposes connected with the captioned project only. It should not be relied upon by any other party or used for any other purpose.  
We accept no responsibility for the consequences of this document being relied upon by any other party, or being used for any other purpose, or containing any error or omission which is due to an error or omission in data supplied to us by other parties.

CONCEPTUAL - NOT FOR CONSTRUCTION

Site Data	
CAPACITY (AC):	270MW
CAPACITY (DC):	344.9MW
PV MODULES	
MFR:	CANADIAN SOLAR
MODEL:	CS6Y-560MB-AG
NAMEPLATE:	560Wp
QUANTITY:	615,875
INVERTERS	
MFR:	KACO
MODEL:	BLUEPLANET 150TL3
NAMEPLATE:	135.1kW / 150kVA
QUANTITY:	2,058
ARRAY	
MFR:	FLEXRACK SERIES G3-X
TYPE:	FIXED TILT
TILT:	37°
GCR:	50%

Legend					
	TAX PARCEL BOUNDARY		1 MVA STEP-UP XFMR		
	FENCE		2 MVA STEP-UP XFMR		
	GRAVEL ROAD		3 MVA STEP-UP XFMR		
	NYSDEC WETLANDS		JUNCTION BOX		
	FEDERAL WETLANDS		BORING AREAS		
	VEGETATION BUFFER		PAD MOUNTED SWITCHGEAR		
	REAMS		PCS ID		
	SETBACK		CONDUIT ID		
	NYSDEC SETBACK				
	GAS LINE				
	34.5KV AERIAL LINE				
	STRUCTURE & ID				
	PERMANENT EASEMENT FOR AERIAL LINE				
	AERIAL		FEEDER 1 CABLES		
			FEEDER 2 CABLES		
			FEEDER 3 CABLES		
			FEEDER 4 CABLES		
			FEEDER 4 CABLES		
			34.5KV BESS CABLES		
C	01/07/2022	JLL	ISSUED FOR 94-C	CS	JS
B	12/08/2021	JLL	ISSUED FOR REVIEW	CS	JS
A	11/24/2021	JLL	ISSUED FOR REVIEW	CS	JS
Rev	Date	Drawn	Description	Ch'k'd	App'd

M

M

MOTT  
MACDONALD

101 Station Drive  
Suite 130  
Westwood, MA 02090  
United States  
T +1 (781) 915-0015  
F +1 (781) 915-0001  
W www.mottmac.com

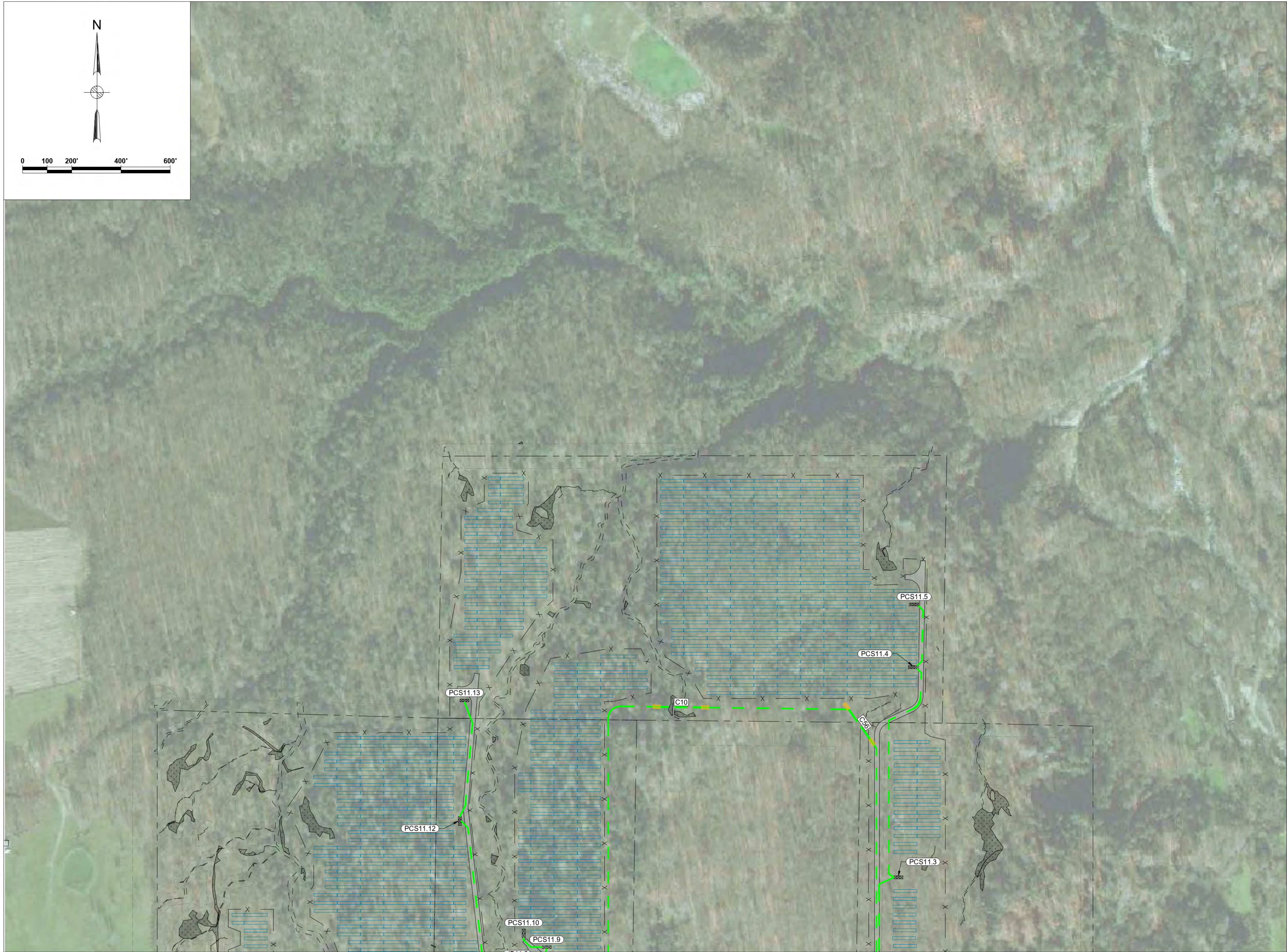
Client

Title

SOUTH RIPLEY SOLAR  
ELECTRICAL SOLAR  
OVERALL SITE PLAN -  
SUPPLEMENTAL A

PRELIMINARY NOT FOR CONSTRUCTION REPLACE WITH ENGINEERS STAMP AT CONSTRUCTION AND/OR FABRICATION	Designed CS Eng check CS
Drawn JLL Approved JS	
Dwg check JLL Project Mngr RA	
Scale at ANSI D 1" = 1500'	Date 01/07/22
Rev C	
Drawing Number SRS-E-400-01_SUP_A	

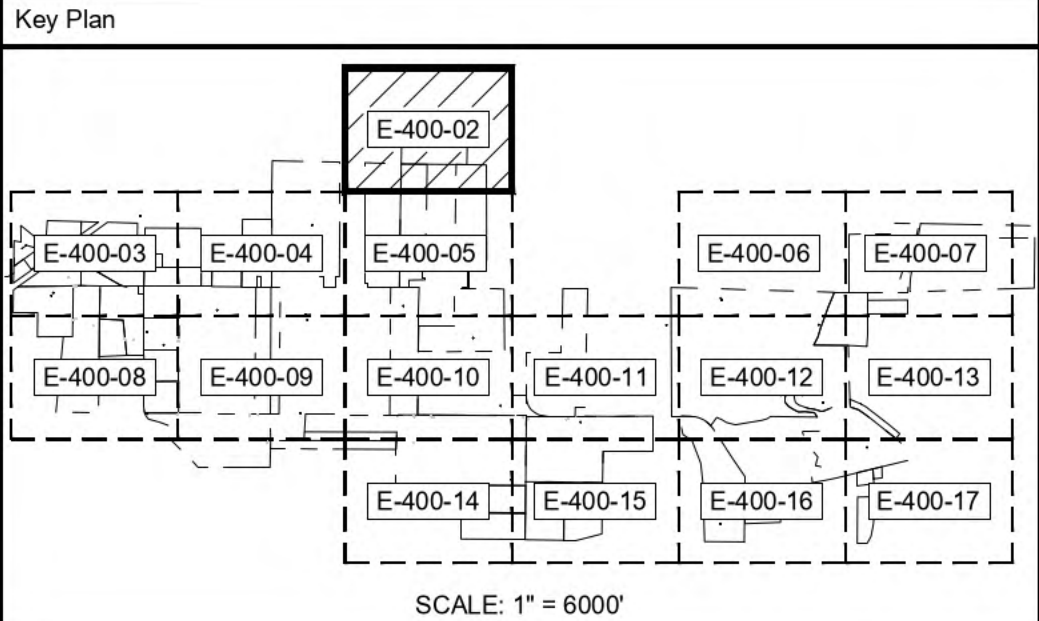




© Mott MacDonald  
It is a violation of New York state Education Law for any person, unless acting under the direction of a licensed engineer to alter this document in any way.  
This document is issued for the party which commissioned it and for specific purposes connected with the captioned project only. It should not be relied upon by any other party or used for any other purpose.  
We accept no responsibility for the consequences of this document being relied upon by any other party, or being used for any other purpose, or containing any error or omission which is due to an error or omission in data supplied to us by other parties.

CONCEPTUAL - NOT FOR CONSTRUCTION

Legend		
	TAX PARCEL BOUNDARY	1 MVA STEP-UP XFMR
	FENCE	2 MVA STEP-UP XFMR
	GRAVEL ROAD	3 MVA STEP-UP XFMR
	NYSDEC WETLANDS	JUNCTION BOX
	FEDERAL WETLANDS	BORING AREAS
	STREAMS	PAD MOUNTED SWITCHGEAR
	SETBACK	PCS ID
	NYSDEC SETBACK	CONDUIT ID
	GAS	
	GAS LINE	
	34.5KV AERIAL LINE	
	STRUCTURE & ID	
	PERMANENT EASEMENT FOR AERIAL LINE	
	AERIAL	FEEDER 1 CABLES
	IN CONDUIT	FEEDER 2 CABLES
	IN TRENCH	FEEDER 3 CABLES
		FEEDER 4 CABLES
		34.5KV BESS CABLES



F	07/23/2021	JLL	ISSUED FOR 94-C	JS	JAB
E	07/14/2021	JLL	ISSUED FOR REVIEW	JS	JAB
D	06/18/2021	JLL	ISSUED FOR REVIEW	DD	JAB
C	06/04/2021	JLL	ISSUED FOR REVIEW	DD	JAB
B	05/21/2021	JLL	ISSUED FOR REVIEW	DD	JAB
Rev	Date	Drawn	Description	Ch'k'd	App'd

**MOTT MACDONALD**

101 Station Drive  
Suite 130  
Westwood, MA 02090  
United States  
T +1 (781) 915-0015  
F +1 (781) 915-0001  
W www.mottmac.com

Client

**South Ripley**  
SOLAR PROJECT

Title

**SOUTH RIPLEY SOLAR  
ELECTRICAL SOLAR  
ARRAY PARCEL DETAIL 1**

PRELIMINARY NOT FOR CONSTRUCTION REPLACE WITH ENGINEERS STAMP AT CONSTRUCTION AND/OR FABRICATION	Designed	BG	Eng check	JS
	Drawn	JLL	Approved	JAB
	Dwg check		Project Mngr	RA
	Scale at ANSI D 1" = 200'		Date	Rev F
	Drawing Number	SRS-E-400-02		