



Legend

— 1300 — EXISTING MAJOR CONTOUR

— — EXISTING MINOR CONTOUR

PROPOSED ACCESS ROAD

N

0 25' 50' 100' 150'

A	07/23/2021	AH	ISSUED FOR REVIEW	JAS	RA
Rev	Date	Drawn	Description	Ch'k'd	App'd

**M**

**MOTT**

**MACDONALD**

101 Station Drive  
Suite 130  
Westwood, MA 02090  
United States  
**T** +1 (781) 915-0015  
**F** +1 (781) 915-0001  
**W** www.mottmac.com

Client

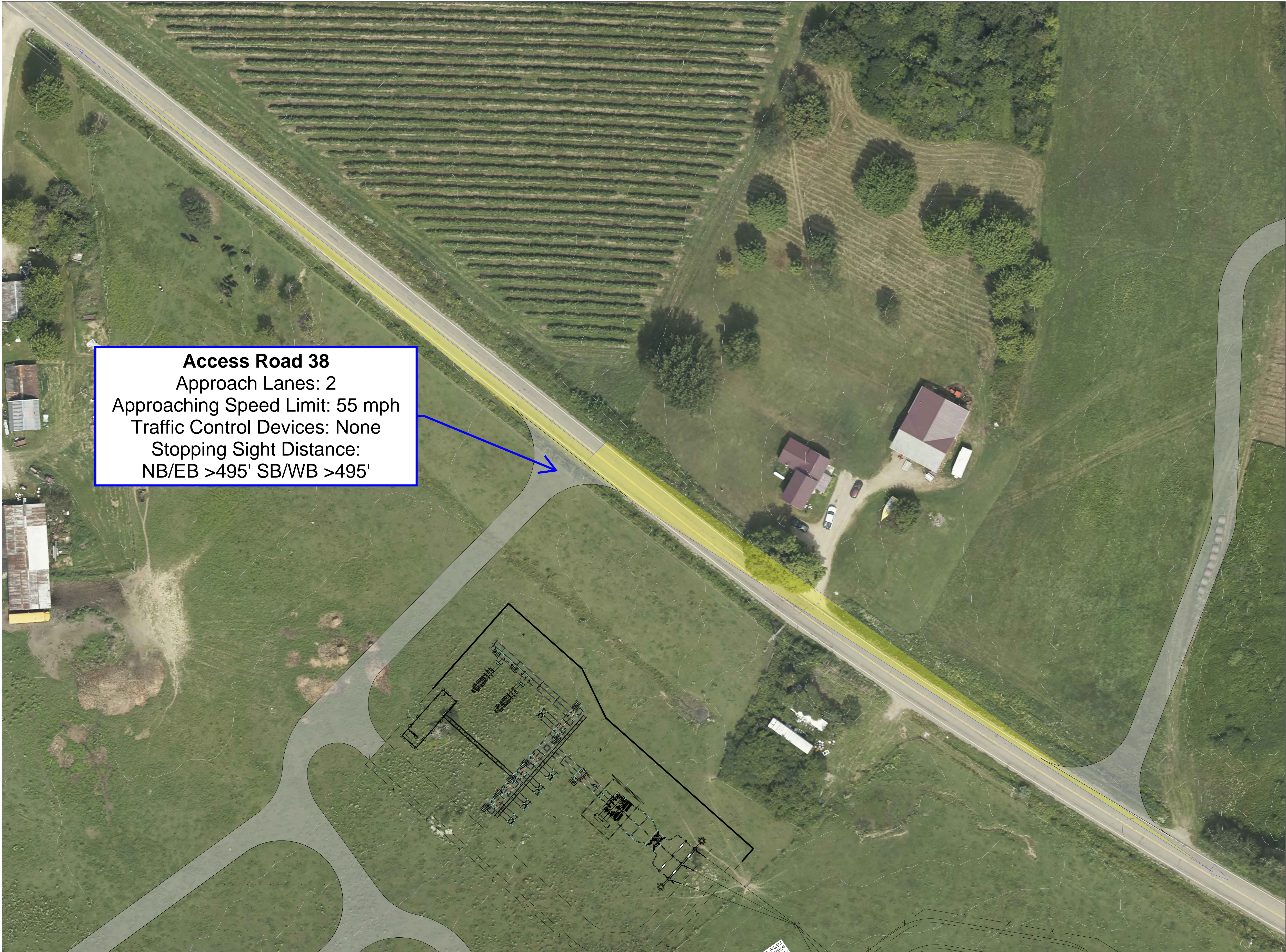
**South Ripley**  
SOLAR PROJECT

Title

SOUTH RIPLEY SOLAR  
EXHIBIT 16  
INTERSECTION SIGHT DISTANCE  
AR-37

PRELIMINARY NOT FOR CONSTRUCTION REPLACE WITH ENGINEERS STAMP AT CONSTRUCTION AND/OR FABRICATION	Designed	JAS	Eng check	JWL
	Drawn	AH	Approved	RA
	Dwg check		Project Mngr	
	Scale at ANSI D 1" = 50'	Date	07/23/2021	Rev A
	Drawing Number SRS-ISD-AR-37			





**Access Road 38**  
Approach Lanes: 2  
Approaching Speed Limit: 55 mph  
Traffic Control Devices: None  
Stopping Sight Distance:  
NB/EB >495' SB/WB >495'

Legend

1300

EXISTING MAJOR CONTOUR

EXISTING MINOR CONTOUR

PROPOSED ACCESS ROAD

N

0

20'

40'

80'

120'

A	12/07/2021	AH	SUPPLEMENTAL 94-C SUBMISSION	JS	RA
Rev	Date	Drawn	Description	Ch'k'd	App'd

M

M

MOTT  
MACDONALD

101 Station Drive  
Suite 130  
Westwood, MA 02090  
United States  
T +1 (781) 915-0015  
F +1 (781) 915-0001  
W www.mottmac.com

Client

G

South Ripley  
SOLAR PROJECT

Title

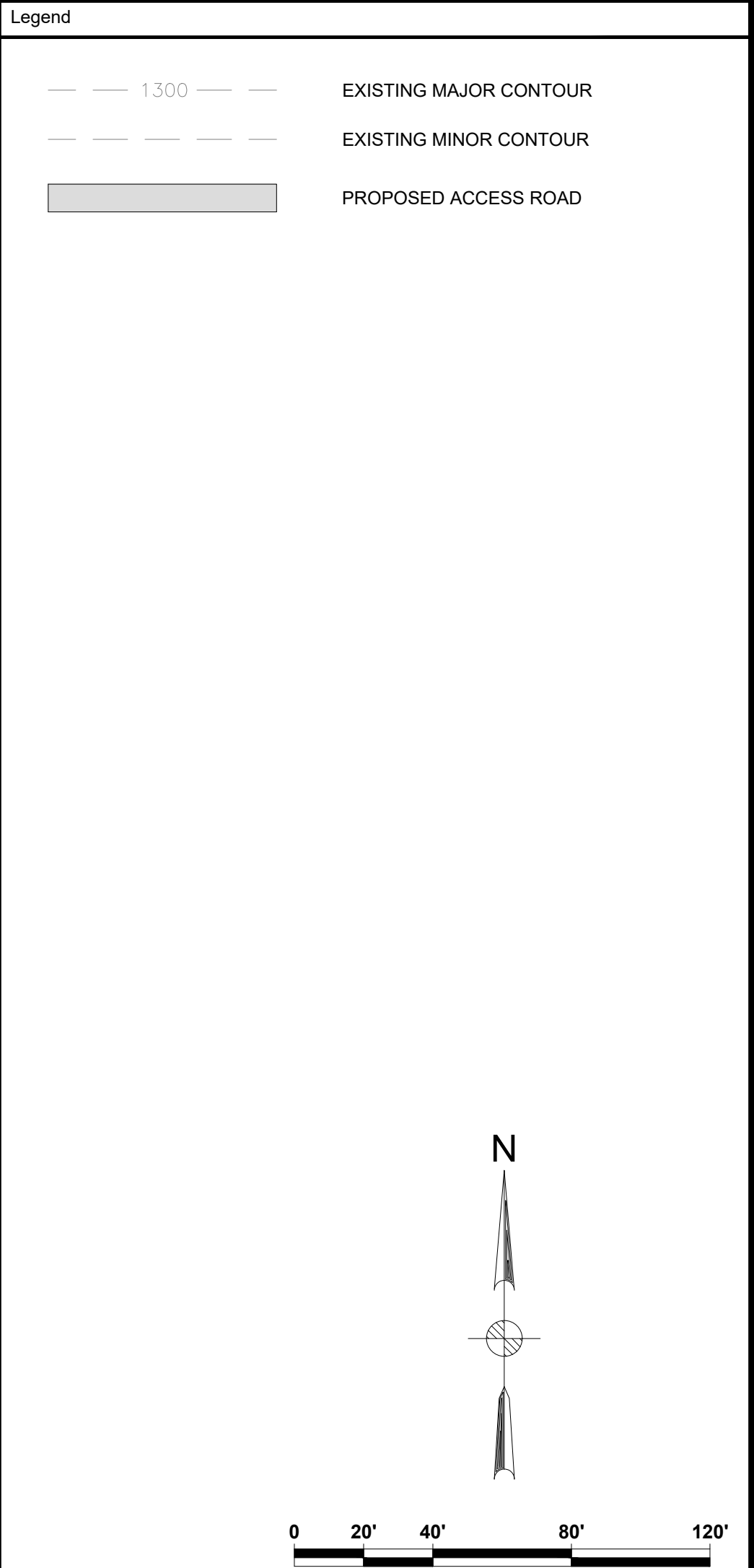
SOUTH RIPLEY SOLAR  
EXHIBIT 16  
INTERSECTION SIGHT DISTANCE  
AR-38

PRELIMINARY NOT FOR CONSTRUCTION REPLACE WITH ENGINEERS STAMP AT CONSTRUCTION AND/OR FABRICATION	Designed	-	Eng check	-
	Drawn	-	Approved	-
	Dwg check	-	Project Mngr	-
	Scale at ANSI D 1" = 40'	Date	07/23/2021	Rev
	Drawing Number	SRS-ISD-AR-38-SUP_A		

© Mott MacDonald  
It is a violation of New York state Education Law for any person, unless acting under the direction of a licensed engineer to alter this document in any way.  
This document is issued for the party which commissioned it and for specific purposes connected with the captioned project only. It should not be relied upon by any other party or used for any other purpose.  
We accept no responsibility for the consequences of this document being relied upon by any other party, or being used for any other purpose, or containing any error or omission which is due to an error or omission in data supplied to us by other parties.

CONCEPTUAL - NOT FOR CONSTRUCTION





A	12/07/2021	AH	SUPPLEMENTAL 94-C SUBMISSION	JS	RA
Rev	Date	Drawn	Description	Ch'k'd	App'd

M

M

MOTT  
MACDONALD

101 Station Drive  
Suite 130  
Westwood, MA 02090  
United States  
T +1 (781) 915-0015  
F +1 (781) 915-0001  
W www.mottmac.com

Client

Title SOUTH RIPLEY SOLAR  
EXHIBIT 16  
INTERSECTION SIGHT DISTANCE  
AR-39

PRELIMINARY NOT FOR CONSTRUCTION REPLACE WITH ENGINEERS STAMP AT CONSTRUCTION AND/OR FABRICATION	Designed	-	Eng check	-
	Drawn	-	Approved	-
	Dwg check	-	Project Mngr	-
	Scale at ANSI D 1" = 40'	Date 10/07/2021	Rev A	
	Drawing Number SRS-ISD-AR-39-SUP_A			