



Legend

1300 EXISTING MAJOR CONTOUR

EXISTING MINOR CONTOUR

PROPOSED ACCESS ROAD

N

0 25' 50' 100' 150'

A	07/23/2021	AH	ISSUED FOR REVIEW	JAS	RA
Rev	Date	Drawn	Description	Ch'k'd	App'd

M

MOTT
MACDONALD

101 Station Drive
Suite 130
Westwood, MA 02090
United States
T +1 (781) 915-0015
F +1 (781) 915-0001
W www.mottmac.com

Client

Title

SOUTH RIPLEY SOLAR
EXHIBIT 16
INTERSECTION SIGHT DISTANCE
AR-10

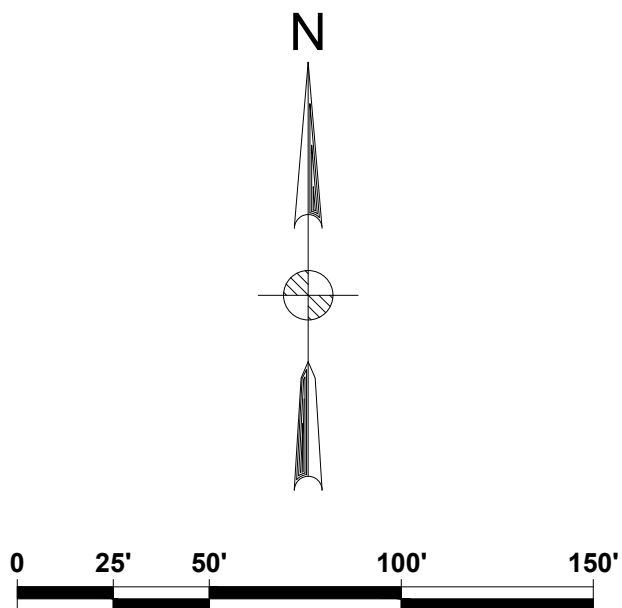
PRELIMINARY NOT FOR CONSTRUCTION REPLACE WITH ENGINEERS STAMP AT CONSTRUCTION AND/OR FABRICATION	Designed	JAS	Eng check	JWL
	Drawn	AH	Approved	RA
	Dwg check		Project Mngr	
	Scale at ANSI D 1" = 50'	Date	Rev	A
	Drawing Number SRS-ISR-AR-10			

© Mott MacDonald
It is a violation of New York state Education Law for any person, unless acting under the direction of a licensed engineer to alter this document in any way.
This document is issued for the party which commissioned it and for specific purposes connected with the captioned project only. It should not be relied upon by any other party or used for any other purpose.
We accept no responsibility for the consequences of this document being relied upon by any other party, or being used for any other purpose, or containing any error or omission which is due to an error or omission in data supplied to us by other parties.

CONCEPTUAL - NOT FOR CONSTRUCTION



Legend	
	EXISTING MAJOR CONTOUR
	EXISTING MINOR CONTOUR
	PROPOSED ACCESS ROAD



A	07/23/2021	AH	ISSUED FOR REVIEW	JAS	RA
Rev	Date	Drawn	Description	Ch'k'd	App'd

**MOTT
MACDONALD**

101 Station Drive
Suite 130
Westwood, MA 02090
United States
T +1 (781) 915-0015
F +1 (781) 915-0001
W www.mottmac.com

Client

Title

SOUTH RIPLEY SOLAR
EXHIBIT 16
INTERSECTION SIGHT DISTANCE
AR-11

PRELIMINARY NOT FOR CONSTRUCTION REPLACE WITH ENGINEERS STAMP AT CONSTRUCTION AND/OR FABRICATION	Designed	JAS	Eng check	JWL
	Drawn	AH	Approved	RA
	Dwg check		Project Mngr	
	Scale at ANSI D		Date	Rev
	1" = 50'		07/23/2021	A
Drawing Number SRS-ISD-AR-11				

© Mott MacDonald
It is a violation of New York state Education Law for any person, unless acting under the direction of a licensed engineer to alter this document in any way.
This document is issued for the party which commissioned it and for specific purposes connected with the captioned project only. It should not be relied upon by any other party or used for any other purpose.
We accept no responsibility for the consequences of this document being relied upon by any other party, or being used for any other purpose, or containing any error or omission which is due to an error or omission in data supplied to us by other parties.

CONCEPTUAL - NOT FOR CONSTRUCTION



Legend

1300

EXISTING MAJOR CONTOUR

EXISTING MINOR CONTOUR

PROPOSED ACCESS ROAD

N

0

25'

50'

100'

150'

A	07/23/2021	AH	ISSUED FOR REVIEW	JAS	RA
Rev	Date	Drawn	Description	Ch'k'd	App'd

M

M

MOTT
MACDONALD

101 Station Drive
Suite 130
Westwood, MA 02090
United States
T +1 (781) 915-0015
F +1 (781) 915-0001
W www.mottmac.com

Client

G

South Ripley
SOLAR PROJECT

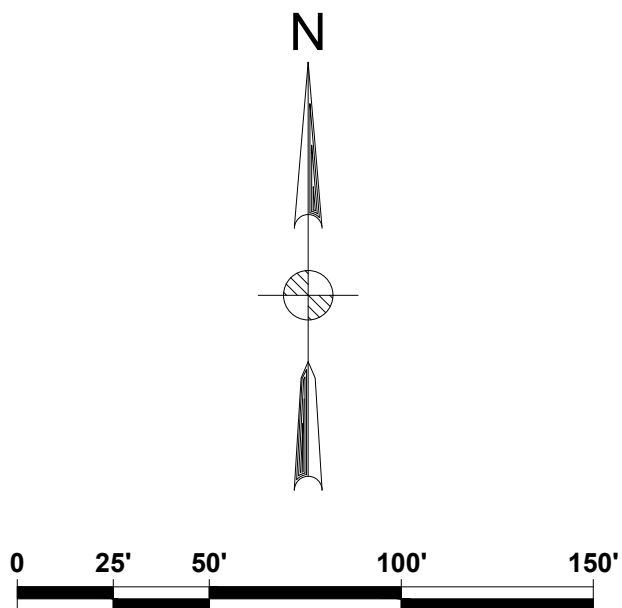
Title

SOUTH RIPLEY SOLAR
EXHIBIT 16
INTERSECTION SIGHT DISTANCE
AR-12

PRELIMINARY NOT FOR CONSTRUCTION REPLACE WITH ENGINEERS STAMP AT CONSTRUCTION AND/OR FABRICATION	Designed	JAS	Eng check	JWL
	Drawn	AH	Approved	RA
	Dwg check		Project Mngr	
	Scale at ANSI D	Date	Rev	A
	1" = 50'	07/23/2021		
Drawing Number SRS-ISD-AR-12				



Legend	
	EXISTING MAJOR CONTOUR
	EXISTING MINOR CONTOUR
	PROPOSED ACCESS ROAD



A	07/23/2021	AH	ISSUED FOR REVIEW	JAS	RA
Rev	Date	Drawn	Description	Ch'k'd	App'd



101 Station Drive
Suite 130
Westwood, MA 02090
United States
T +1 (781) 915-0015
F +1 (781) 915-0001
W www.mottmac.com

Client



Title
SOUTH RIPLEY SOLAR
EXHIBIT 16
INTERSECTION SIGHT DISTANCE
AR-13

PRELIMINARY NOT FOR CONSTRUCTION REPLACE WITH ENGINEERS STAMP AT CONSTRUCTION AND/OR FABRICATION	Designed	JAS	Eng check	JWL
	Drawn	AH	Approved	RA
	Dwg check		Project Mngr	
	Scale at ANSI D 1" = 50'	Date	07/23/2021	Rev A
	Drawing Number	SRS-ISD-AR-13		

© Mott MacDonald
It is a violation of New York state Education Law for any person, unless acting under the direction of a licensed engineer to alter this document in any way.
This document is issued for the party which commissioned it and for specific purposes connected with the captioned project only. It should not be relied upon by any other party or used for any other purpose.
We accept no responsibility for the consequences of this document being relied upon by any other party, or being used for any other purpose, or containing any error or omission which is due to an error or omission in data supplied to us by other parties.

CONCEPTUAL - NOT FOR CONSTRUCTION



Legend

1300

EXISTING MAJOR CONTOUR

EXISTING MINOR CONTOUR

PROPOSED ACCESS ROAD

N

0

25'

50'

100'

150'

A	07/23/2021	AH	ISSUED FOR REVIEW	JAS	RA
Rev	Date	Drawn	Description	Ch'k'd	App'd

M

M

MOTT
MACDONALD

101 Station Drive
Suite 130
Westwood, MA 02090
United States
T +1 (781) 915-0015
F +1 (781) 915-0001
W www.mottmac.com

Client

G

South Ripley
SOLAR PROJECT

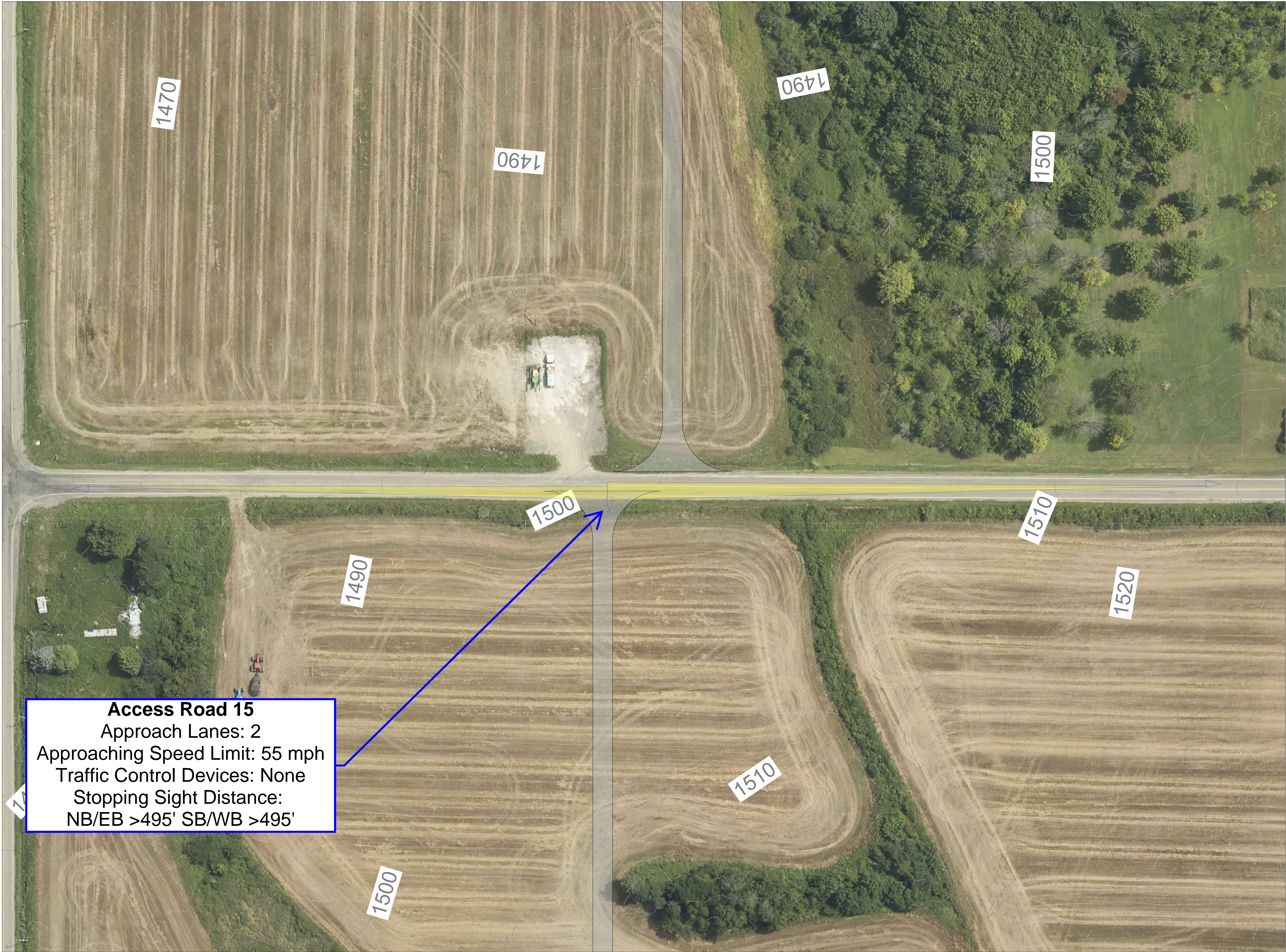
Title

SOUTH RIPLEY SOLAR
EXHIBIT 16
INTERSECTION SIGHT DISTANCE
AR-14

PRELIMINARY NOT FOR CONSTRUCTION REPLACE WITH ENGINEERS STAMP AT CONSTRUCTION AND/OR FABRICATION	Designed	JAS	Eng check	JWL
	Drawn	AH	Approved	RA
	Dwg check		Project Mngr	
	Scale at ANSI D		Date	Rev
	1" = 50'	07/23/2021	A	
Drawing Number		SRS-ISD-AR-14		

© Mott MacDonald
It is a violation of New York state Education Law for any person, unless acting under the direction of a licensed engineer to alter this document in any way.
This document is issued for the party which commissioned it and for specific purposes connected with the captioned project only. It should not be relied upon by any other party or used for any other purpose.
We accept no responsibility for the consequences of this document being relied upon by any other party, or being used for any other purpose, or containing any error or omission which is due to an error or omission in data supplied to us by other parties.

CONCEPTUAL - NOT FOR CONSTRUCTION



Legend

1300

EXISTING MAJOR CONTOUR

EXISTING MINOR CONTOUR

PROPOSED ACCESS ROAD

N

0

25'

50'

100'

150'

A	07/23/2021	AH	ISSUED FOR REVIEW	JAS	RA
Rev	Date	Drawn	Description	Ch'k'd	App'd

M

M

MOTT
MACDONALD

101 Station Drive
Suite 130
Westwood, MA 02090
United States
T +1 (781) 915-0015
F +1 (781) 915-0001
W www.mottmac.com

Client

G

South Ripley
SOLAR PROJECT

Title

SOUTH RIPLEY SOLAR
EXHIBIT 16
INTERSECTION SIGHT DISTANCE
AR-15

PRELIMINARY NOT FOR CONSTRUCTION REPLACE WITH ENGINEERS STAMP AT CONSTRUCTION AND/OR FABRICATION	Designed	JAS	Eng check	JWL
	Drawn	AH	Approved	RA
	Dwg check		Project Mngr	
	Scale at ANSI D		Date	Rev
	1" = 50'	07/23/2021	A	
Drawing Number		SRS-ISD-AR-15		

© Mott MacDonald
It is a violation of New York state Education Law for any person, unless acting under the direction of a licensed engineer to alter this document in any way.
This document is issued for the party which commissioned it and for specific purposes connected with the captioned project only. It should not be relied upon by any other party or used for any other purpose.
We accept no responsibility for the consequences of this document being relied upon by any other party, or being used for any other purpose, or containing any error or omission which is due to an error or omission in data supplied to us by other parties.

CONCEPTUAL - NOT FOR CONSTRUCTION