

South Ripley Solar Project

Town of Ripley, Chautauqua County, New York

Section 94-c

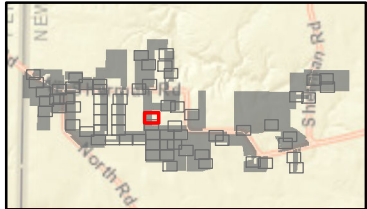
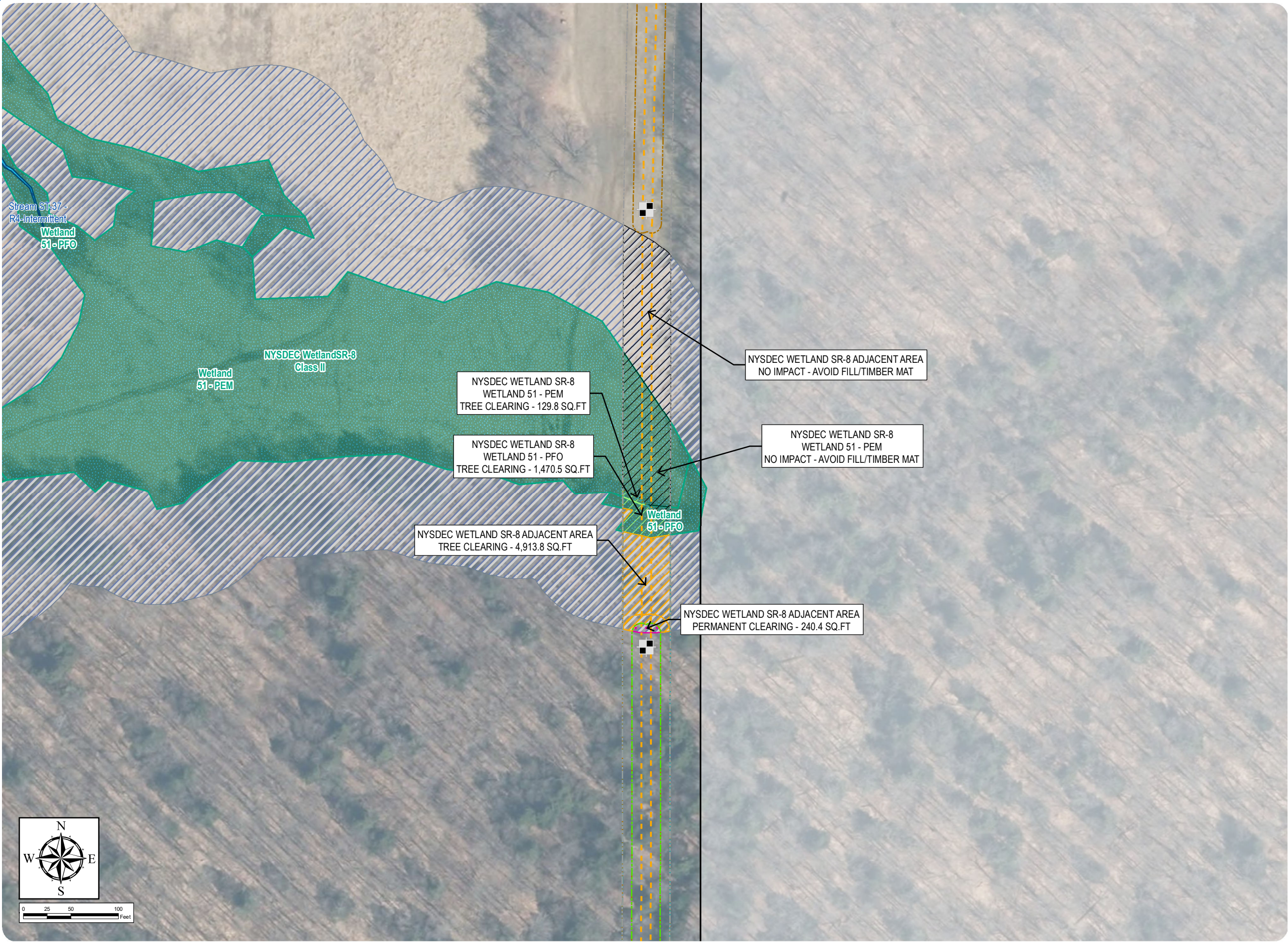
Application Supplement

Matter No. 21-00750

Appendix S14-C: Wetland and Stream Impact Drawings

Wetland/Stream Impacts

- Permanent NYSDEC Regulated Adjacent Area Impact - Clearing
- Temporary NYSDEC Regulated Adjacent Area Impact - Tree Clearing
- Temporary Wetland Impact - Tree Clearing
- Area of No Impact
- Delineated Wetlands/Streams
 - Delineated Wetland w/ State & Federal Jurisdiction
 - Delineated Stream w/ Federal Jurisdiction
 - Regulated Adjacent Area Wetland
- Facility Components
 - Access Road
 - Underground Collection Line
 - HDD Location
 - PV Panel
 - Facility Site
 - Limit of Disturbance - Temporary Soil Disturbance
 - Limit of Disturbance - Grubbing
 - Limit of Disturbance - Tree Clearing
 - Limit of Disturbance - Temporary Work Area



Sheet 34 of 69

Notes: 1. Basemap: NYSDOP "2016" orthoimagery map service. 2. This map was generated in ArcMap on January 11, 2022. 3. This is a color graphic. Reproduction in grayscale may misrepresent the data.



South Ripley Solar Project

Town of Ripley, Chautauqua County, New York

Section 94-c

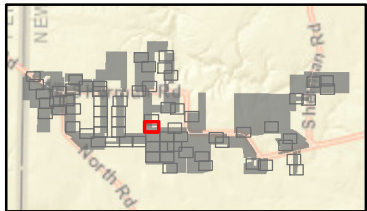
Application Supplement

Matter No. 21-00750

Appendix S14-C: Wetland and Stream Impact Drawings

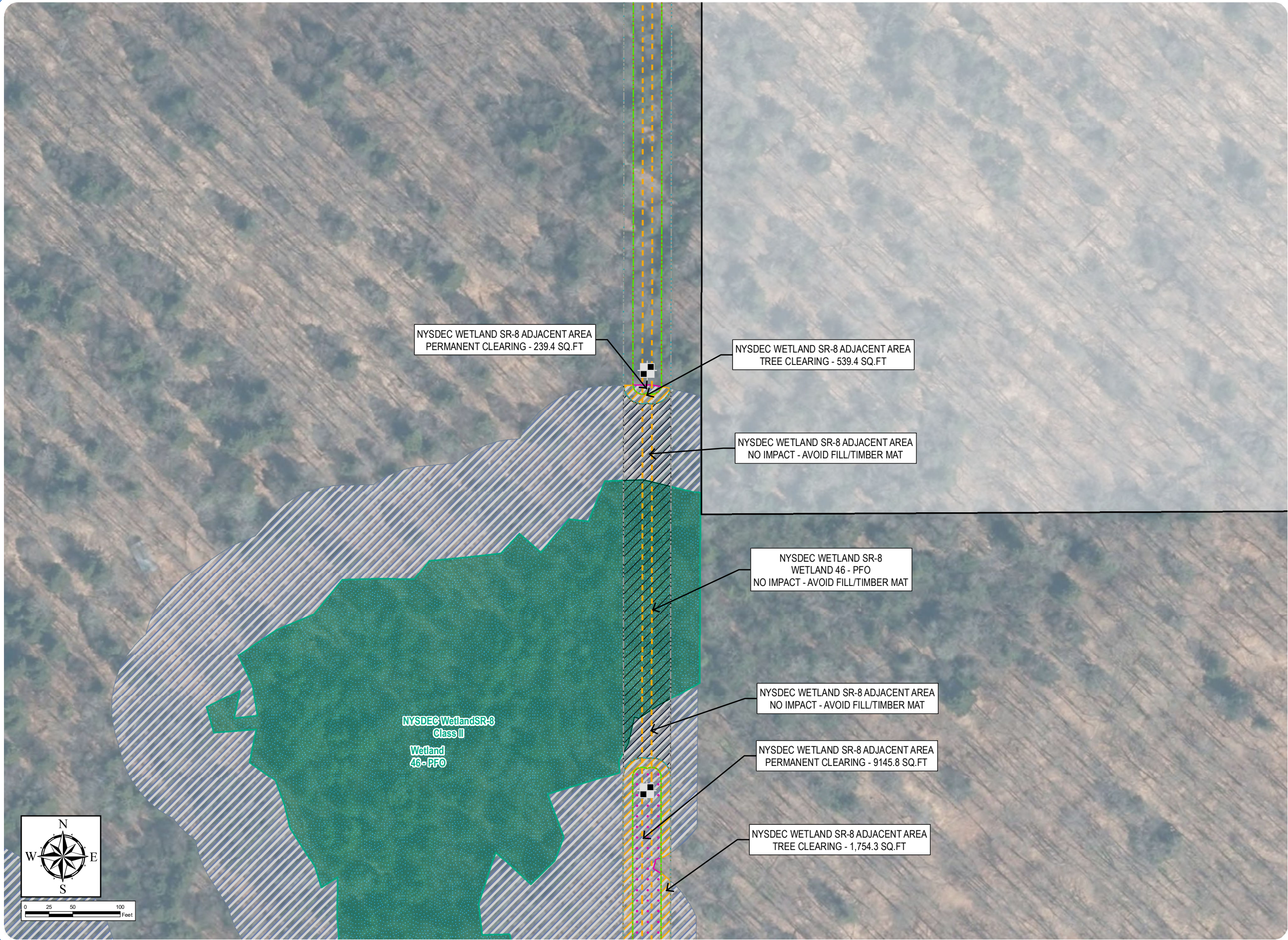
Wetland/Stream Impacts

- Permanent NYSDEC Regulated Adjacent Area Impact - Clearing
- Temporary NYSDEC Regulated Adjacent Area Impact - Tree Clearing
- Area of No Impact
- Delineated Wetlands/Streams
 - Delineated Wetland w/ State & Federal Jurisdiction
 - Regulated Adjacent Area Wetland
- Facility Components
 - Access Road
 - Underground Collection Line
 - HDD Location
 - PV Panel
 - Facility Site
 - Limit of Disturbance - Temporary Soil Disturbance
 - Limit of Disturbance - Grubbing
 - Limit of Disturbance - Tree Clearing
 - Limit of Disturbance - Temporary Work Area



Sheet 35 of 69

Notes: 1. Basemap: NYSDOP "2016" orthoimagery map service. 2. This map was generated in ArcMap on January 11, 2022. 3. This is a color graphic. Reproduction in grayscale may misrepresent the data.



South Ripley Solar Project

Town of Ripley, Chautauqua County, New York

Section 94-c

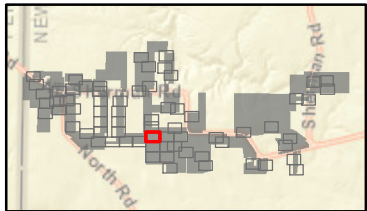
Application Supplement

Matter No. 21-00750

Appendix S14-C: Wetland and Stream Impact Drawings

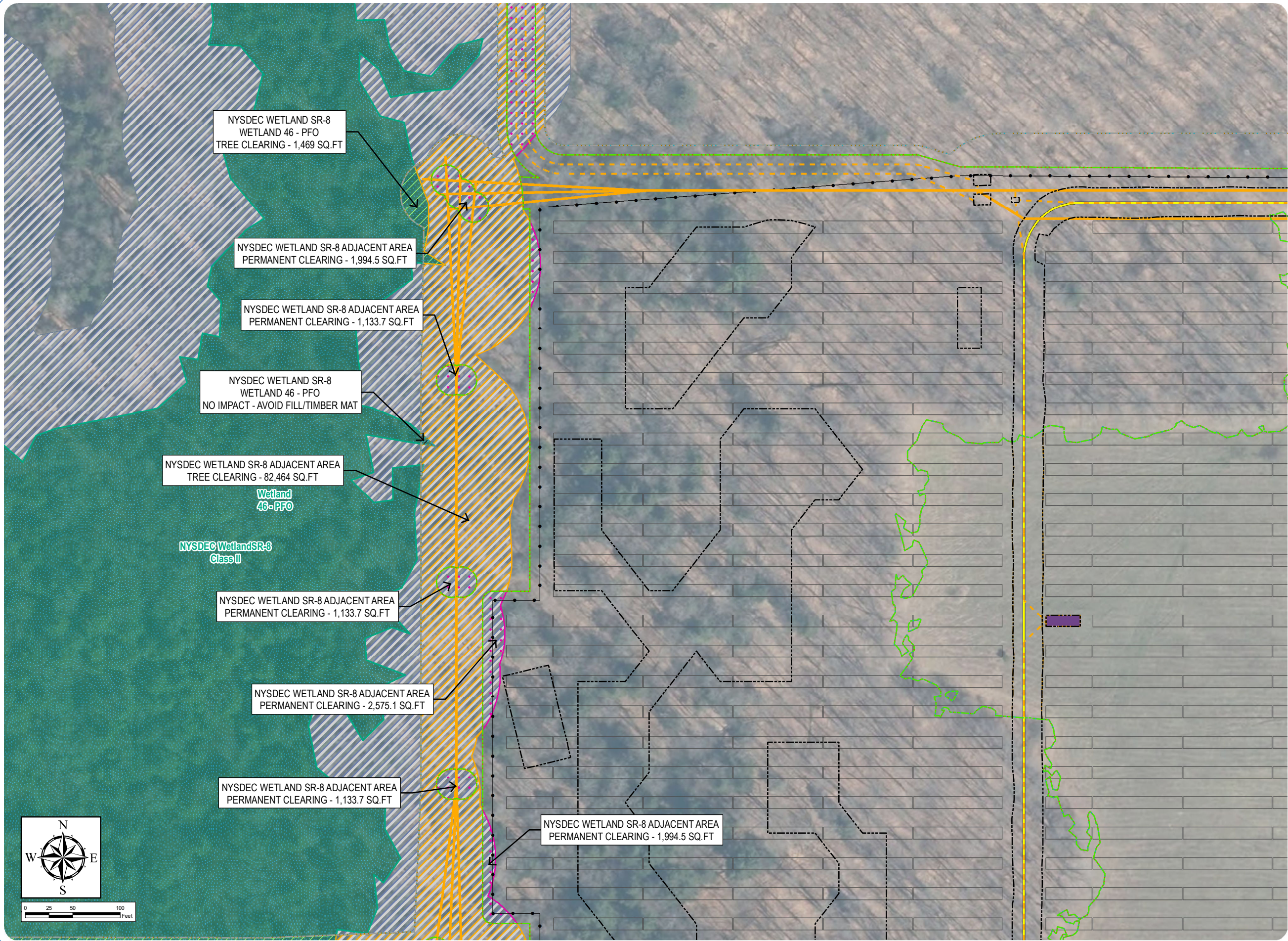
Wetland/Stream Impacts

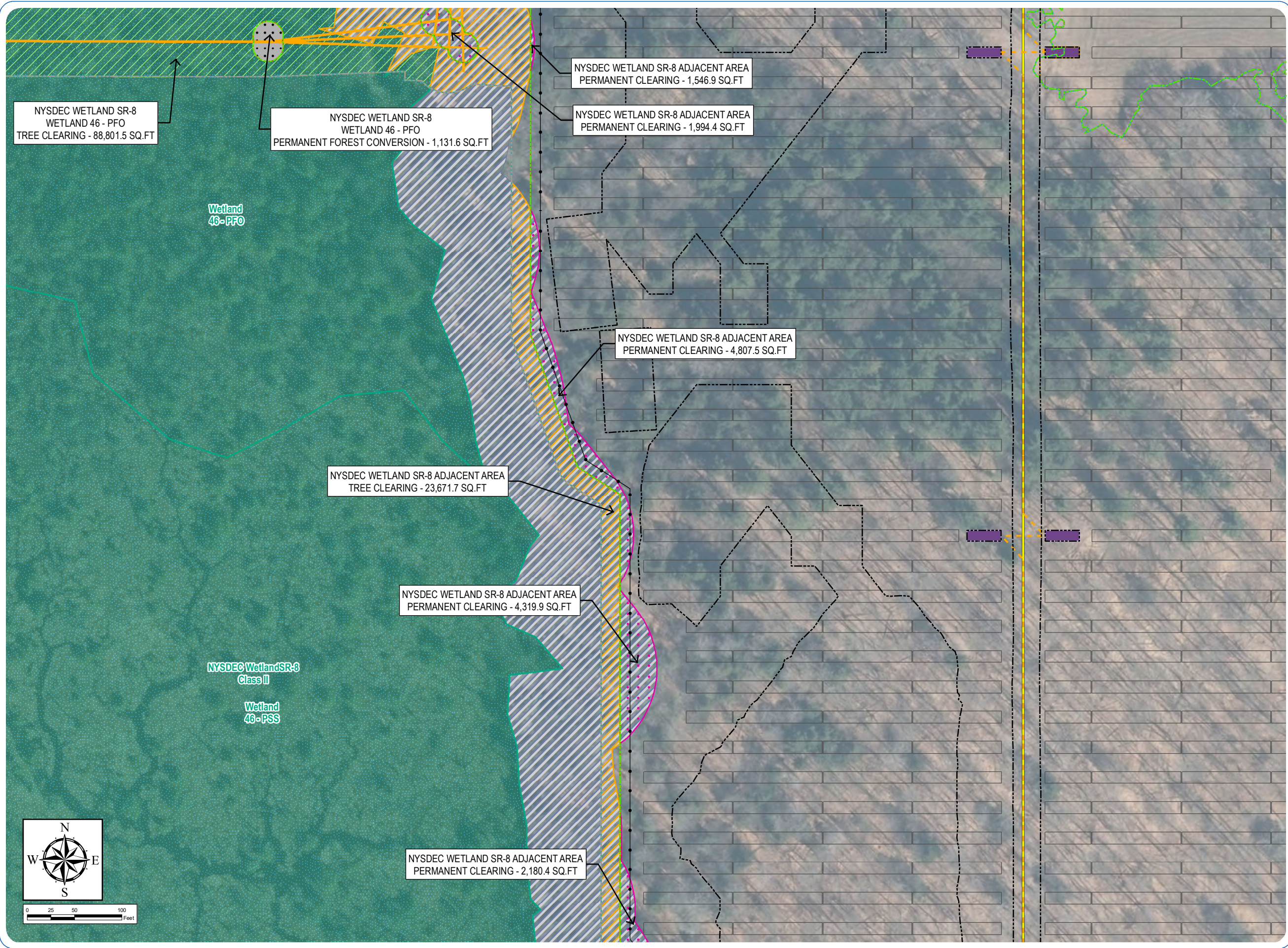
- Permanent NYSDEC Regulated Adjacent Area Impact - Clearing
- Temporary NYSDEC Regulated Adjacent Area Impact - Tree Clearing
- Temporary Wetland Impact - Tree Clearing
- Area of No Impact
- Delineated Wetlands/Streams
 - Delineated Wetland w/ State & Federal Jurisdiction
 - Regulated Adjacent Area Wetland
- Facility Components
 - Access Road
 - Overhead Collection Line
 - Underground Collection Line
 - Inverter
 - PV Panel
 - Fenceline
 - Facility Site
 - Limit of Disturbance - Permanent Fill
 - Limit of Disturbance - Temporary Soil Disturbance
 - Limit of Disturbance - Grubbing
 - Limit of Disturbance - Tree Clearing
 - Limit of Disturbance - Temporary Work Area



Sheet 36 of 69

Notes: 1. Basemap: NYSDOP "2016" orthoimagery map service. 2. This map was generated in ArcMap on January 11, 2022. 3. This is a color graphic. Reproduction in grayscale may misrepresent the data.





South Ripley Solar Project

Town of Ripley, Chautauqua County, New York

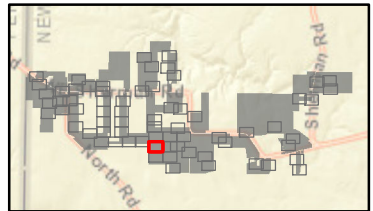
Section 94-c

Application Supplement

Matter No. 21-00750

Appendix S14-C: Wetland and Stream Impact Drawings

- Wetland/Stream Impacts
- Permanent NYSDEC Regulated Adjacent Area Impact - Clearing
 - Permanent Forest Conversion Wetland Impact - Clearing
 - Temporary NYSDEC Regulated Adjacent Area Impact - Tree Clearing
 - Temporary Wetland Impact - Work Area
 - Temporary Wetland Impact - Tree Clearing
- Delineated Wetlands/Streams
- Delineated Wetland w/ State & Federal Jurisdiction
 - Regulated Adjacent Area Wetland
- Facility Components
- Access Road
 - Overhead Collection Line
 - Underground Collection Line
 - Inverter
 - PV Panel
 - Fenceline
 - Facility Site
 - Limit of Disturbance - Permanent Fill
 - Limit of Disturbance - Temporary Soil Disturbance
 - Limit of Disturbance - Grubbing
 - Limit of Disturbance - Tree Clearing
 - Limit of Disturbance - Temporary Work Area



Sheet 37 of 69

Notes: 1. Basemap: NYSDOP "2016" orthoimagery map service. 2. This map was generated in ArcMap on January 11, 2022. 3. This is a color graphic. Reproduction in grayscale may misrepresent the data.



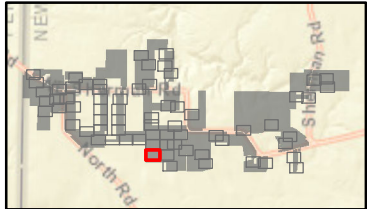
South Ripley Solar Project

Town of Ripley, Chautauqua County, New York

Section 94-c
Application Supplement
Matter No. 21-00750

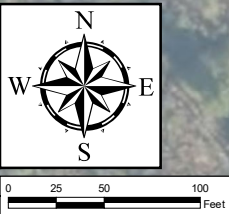
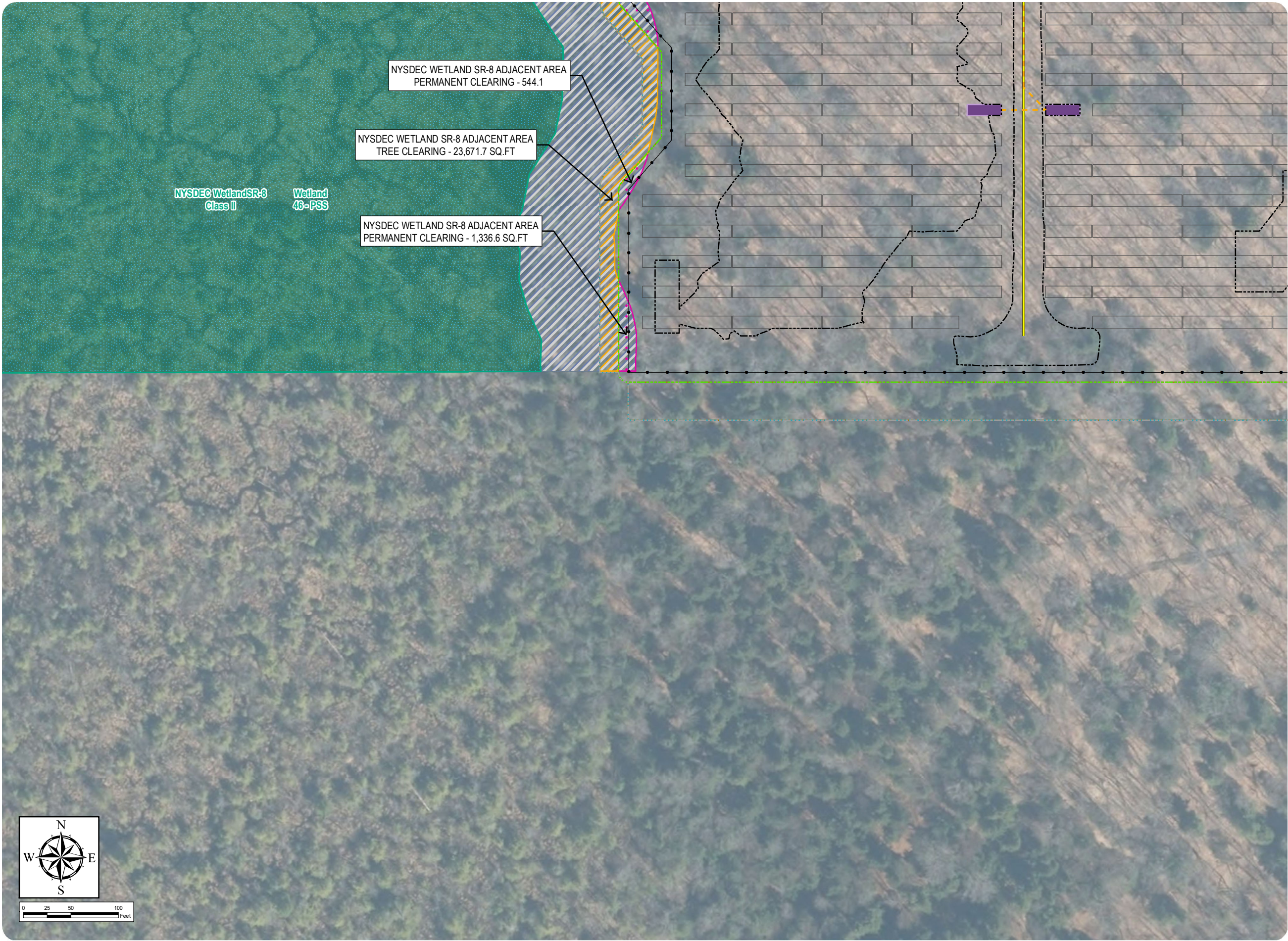
Appendix S14-C: Wetland and Stream Impact Drawings

- Wetland/Stream Impacts
- Permanent NYSDEC Regulated Adjacent Area Impact - Clearing
 - Temporary NYSDEC Regulated Adjacent Area Impact - Tree Clearing
- Delineated Wetlands/Streams
- Delineated Wetland w/ State & Federal Jurisdiction
 - Regulated Adjacent Area Wetland
- Facility Components
- Access Road
 - Underground Collection Line
 - Inverter
 - PV Panel
 - Fenceline
 - Facility Site
 - Limit of Disturbance - Permanent Fill
 - Limit of Disturbance - Temporary Soil Disturbance
 - Limit of Disturbance - Grubbing
 - Limit of Disturbance - Tree Clearing
 - Limit of Disturbance - Temporary Work Area



Sheet 38 of 69

Notes: 1. Basemap: NYSDOP "2016" orthoimagery map service. 2. This map was generated in ArcMap on January 11, 2022. 3. This is a color graphic. Reproduction in grayscale may misrepresent the data.



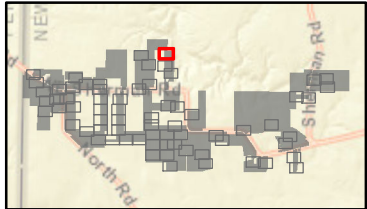
South Ripley Solar Project

Town of Ripley, Chautauqua County, New York

Section 94-c
Application Supplement
Matter No. 21-00750

Appendix S14-C: Wetland and Stream Impact Drawings

- Wetland/Stream Impacts
- Temporary Stream Impact - Tree Clearing
 - Area of No Impact
- Delineated Wetlands/Streams
- Delineated Wetland w/ Federal Jurisdiction
 - Delineated Stream Non-Jurisdictional
 - Delineated Stream w/ Federal Jurisdiction
- Facility Components
- Access Road
 - Underground Collection Line
 - HDD Location
 - Inverter
 - PV Panel
 - Fenceline
 - Facility Site
 - Limit of Disturbance - Permanent Fill
 - Limit of Disturbance - Temporary Soil Disturbance
 - Limit of Disturbance - Grubbing
 - Limit of Disturbance - Tree Clearing
 - Limit of Disturbance - Temporary Work Area



Sheet 39 of 69

Notes: 1. Basemap: NYSDOP "2016" orthoimagery map service. 2. This map was generated in ArcMap on January 11, 2022. 3. This is a color graphic. Reproduction in grayscale may misrepresent the data.



0 25 50 100 Feet

South Ripley Solar Project

Town of Ripley, Chautauqua County, New York

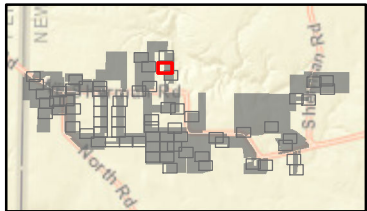
Section 94-c

Application Supplement

Matter No. 21-00750

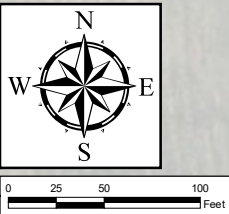
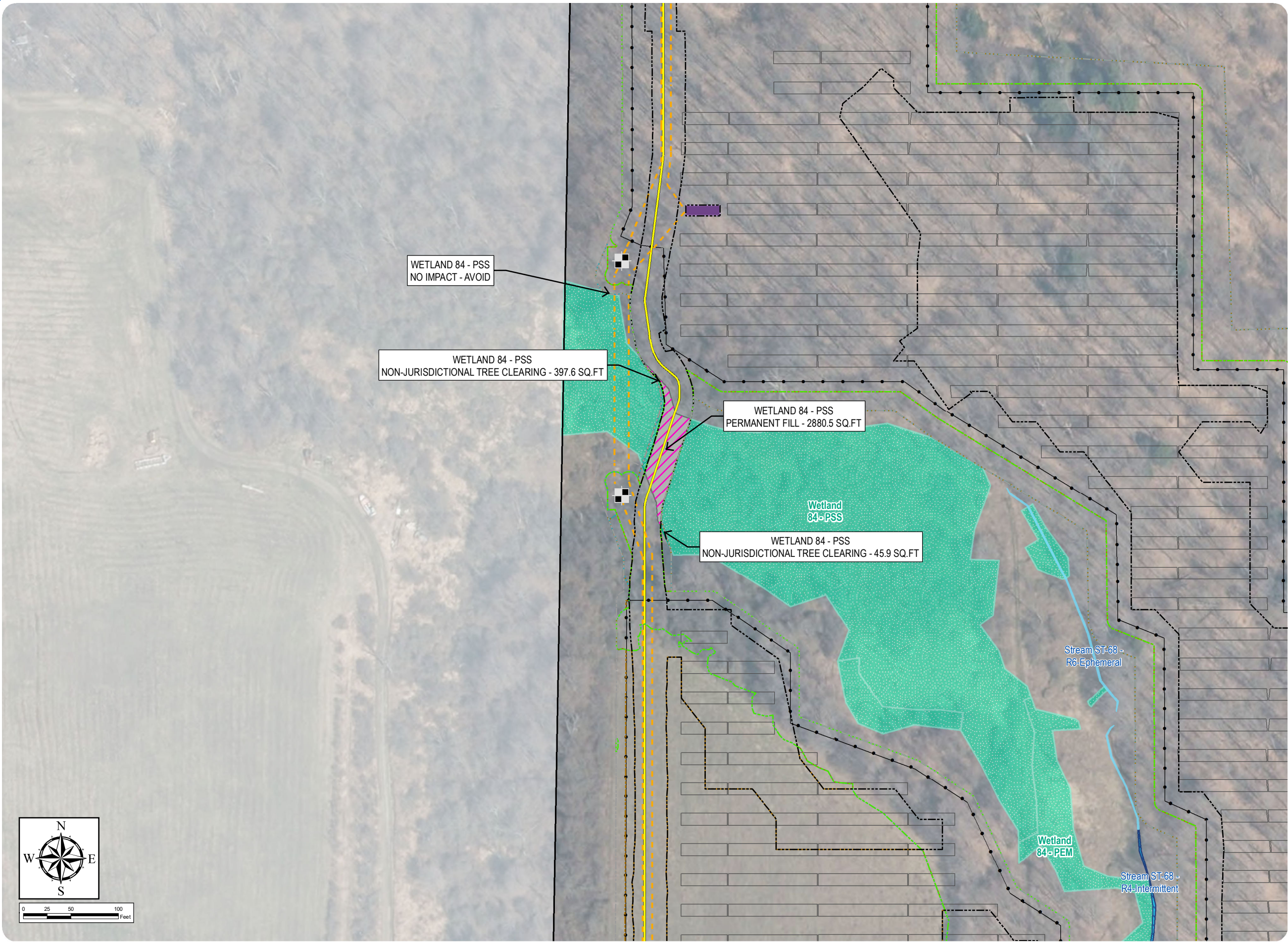
Appendix S14-C: Wetland and Stream Impact Drawings

- Wetland/Stream Impacts
- Permanent Wetland Impact - Clearing
 - Permanent Wetland Impact - Fill
 - Temporary Wetland Impact - Non-Jurisdictional Tree Clearing
 - Area of No Impact
- Delineated Wetlands/Streams
- Delineated Wetland w/ Federal Jurisdiction
 - Delineated Stream Non-Jurisdictional
 - Delineated Stream w/ Federal Jurisdiction
- Facility Components
- Access Road
 - Underground Collection Line
 - HDD Location
 - Inverter
 - PV Panel
 - Fenceline
 - Facility Site
 - Limit of Disturbance - Permanent Fill
 - Limit of Disturbance - Temporary Soil Disturbance
 - Limit of Disturbance - Grubbing
 - Limit of Disturbance - Tree Clearing
 - Limit of Disturbance - Temporary Work Area



Sheet 40 of 69

Notes: 1. Basemap: NYSDOP "2016" orthoimagery map service. 2. This map was generated in ArcMap on January 11, 2022. 3. This is a color graphic. Reproduction in grayscale may misrepresent the data.



South Ripley Solar Project

Town of Ripley, Chautauqua County, New York

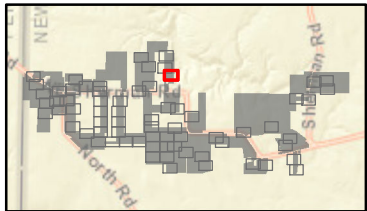
Section 94-c

Application Supplement

Matter No. 21-00750

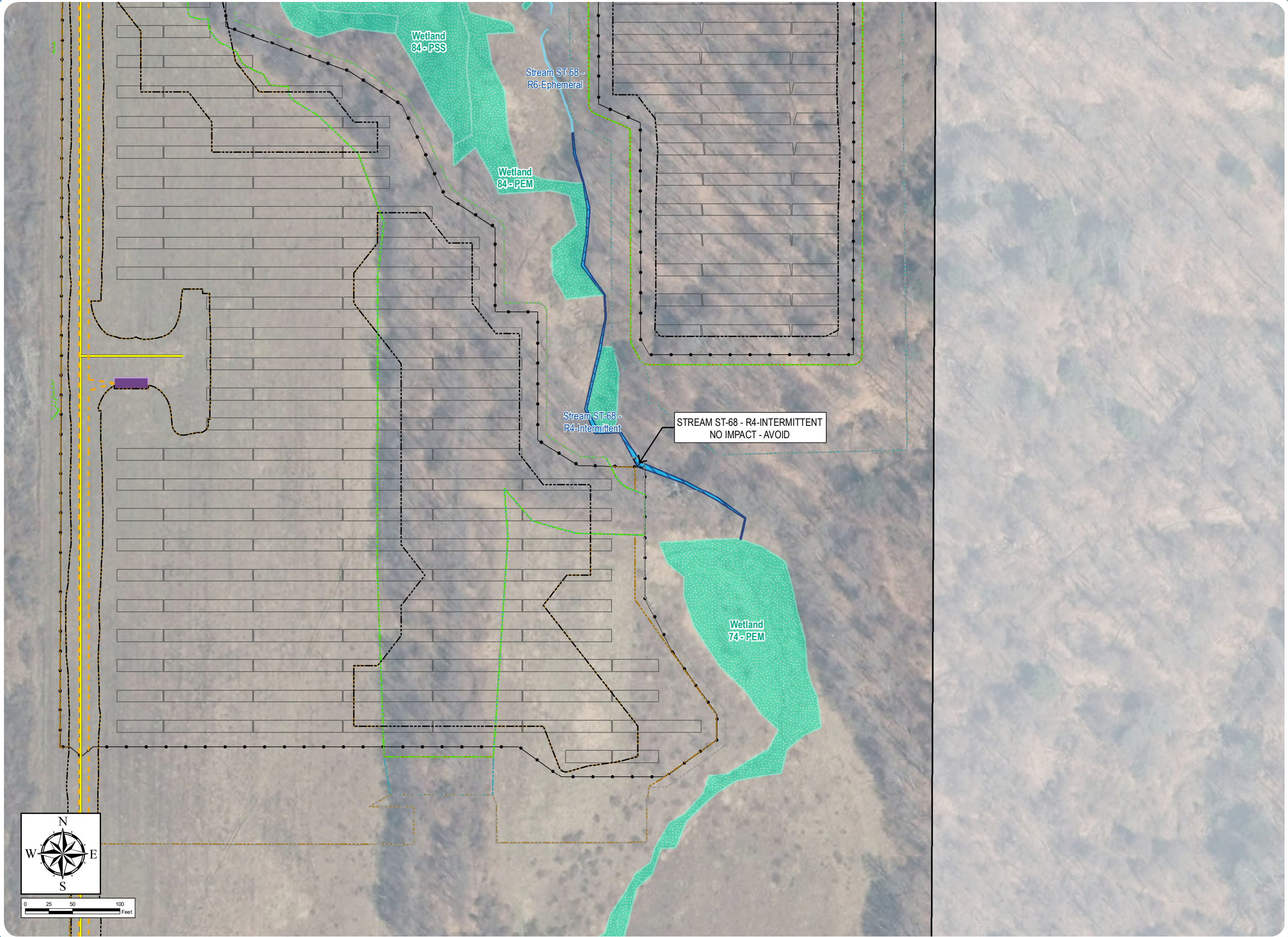
Appendix S14-C: Wetland and Stream Impact Drawings

- Wetland/Stream Impacts
- Area of No Impact
- Delineated Wetlands/Streams
- Delineated Wetland w/ Federal Jurisdiction
 - Delineated Stream Non-Jurisdictional
 - Delineated Stream w/ Federal Jurisdiction
- Facility Components
- Access Road
 - Underground Collection Line
 - Inverter
 - PV Panel
 - Fenceline
 - Facility Site
 - Limit of Disturbance - Permanent Fill
 - Limit of Disturbance - Temporary Soil Disturbance
 - Limit of Disturbance - Grubbing
 - Limit of Disturbance - Tree Clearing
 - Limit of Disturbance - Temporary Work Area



Sheet 41 of 69

Notes: 1. Basemap: NYSDOP "2016" orthoimagery map service. 2. This map was generated in ArcMap on January 11, 2022. 3. This is a color graphic. Reproduction in grayscale may misrepresent the data.



South Ripley Solar Project

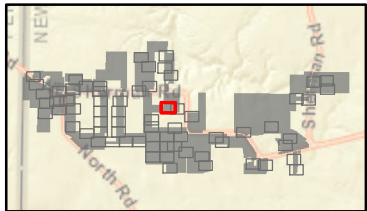
Town of Ripley, Chautauqua County, New York

Section 94-c
Application Supplement
Matter No. 21-00750

Appendix S14-C: Wetland and Stream Impact Drawings

Wetland/Stream Impacts

- Permanent NYSDEC Regulated Adjacent Area Impact - Clearing
- Permanent Stream Impact - Clearing
- Permanent Stream Impact - Fill
- Temporary NYSDEC Regulated Adjacent Area Impact - Tree Clearing
- Temporary Stream Impact - Work Area
- Temporary Stream Impact - Tree Clearing
- Area of No Impact
- Delineated Wetlands/Streams
 - Delineated Wetland w/ Federal Jurisdiction
 - Delineated Wetland w/ State & Federal Jurisdiction
 - Delineated Stream Non-Jurisdictional
 - Delineated Stream w/ Federal Jurisdiction
 - Regulated Adjacent Area Wetland
- Facility Components
 - Access Road
 - Underground Collection Line
 - HDD Location
 - Inverter
 - PV Panel
 - Fenceline
 - Facility Site
 - Limit of Disturbance - Permanent Fill
 - Limit of Disturbance - Temporary Soil Disturbance
 - Limit of Disturbance - Grubbing
 - Limit of Disturbance - Tree Clearing
 - Limit of Disturbance - Temporary Work Area



Sheet 42 of 69

Notes: 1. Basemap: NYSDOP "2016" orthoimagery map service. 2. This map was generated in ArcMap on January 11, 2022. 3. This is a color graphic. Reproduction in grayscale may misrepresent the data.

