

# South Ripley Solar Project

Town of Ripley, Chautauqua County, New York

Section 94-c

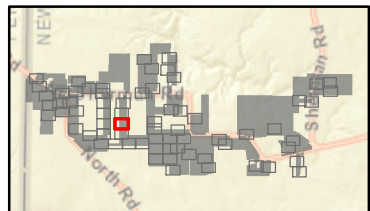
Application Supplement

Matter No. 21-00750

## Appendix S14-C: Wetland and Stream Impact Drawings

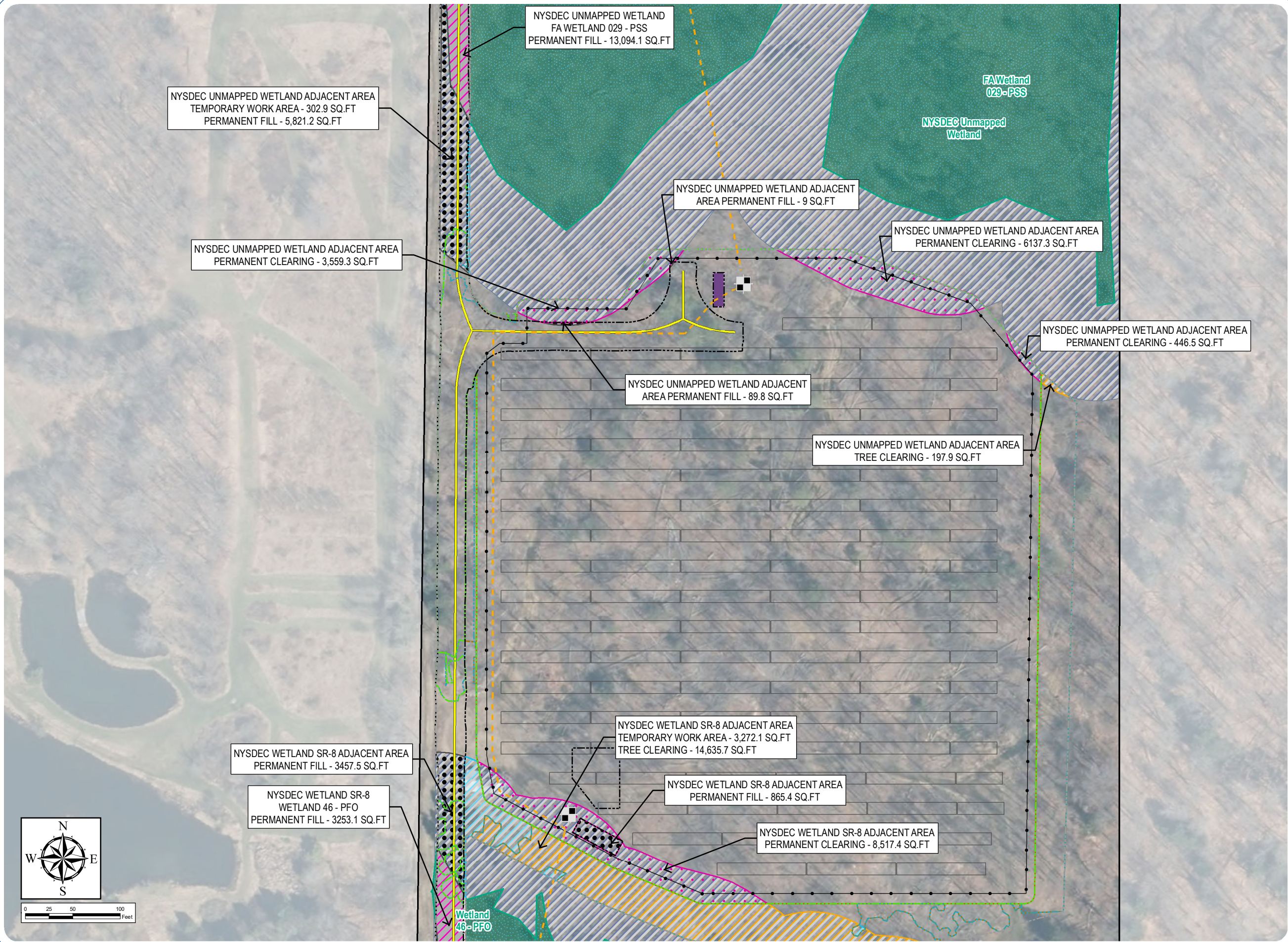
### Wetland/Stream Impacts

- Permanent NYSDEC Regulated Adjacent Area Impact - Clearing
- Permanent NYSDEC Regulated Adjacent Area Impact - Fill
- Permanent Wetland Impact - Fill
- Temporary NYSDEC Regulated Adjacent Area Impact - Work Area
- Temporary NYSDEC Regulated Adjacent Area Impact - Tree Clearing
- Temporary Wetland Impact - Work Area
- Delineated Wetlands/Streams
  - Delineated Wetland w/ State & Federal Jurisdiction
  - Regulated Adjacent Area Wetland
- Facility Components
  - Access Road
  - Underground Collection Line
  - HDD Location
  - Inverter
  - PV Panel
  - Fenceline
  - Facility Site
  - Limit of Disturbance - Permanent Fill
  - Limit of Disturbance - Temporary Soil Disturbance
  - Limit of Disturbance - Grubbing
  - Limit of Disturbance - Tree Clearing
  - Limit of Disturbance - Temporary Work Area



Sheet 25 of 69

Notes: 1. Basemap: NYSDOP "2016" orthoimagery map service. 2. This map was generated in ArcMap on January 11, 2022. 3. This is a color graphic. Reproduction in grayscale may misrepresent the data.





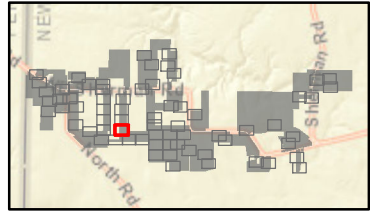
South Ripley Solar Project

Town of Ripley, Chautauqua County, New York

Section 94-c  
Application Supplement  
Matter No. 21-00750

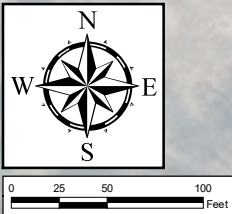
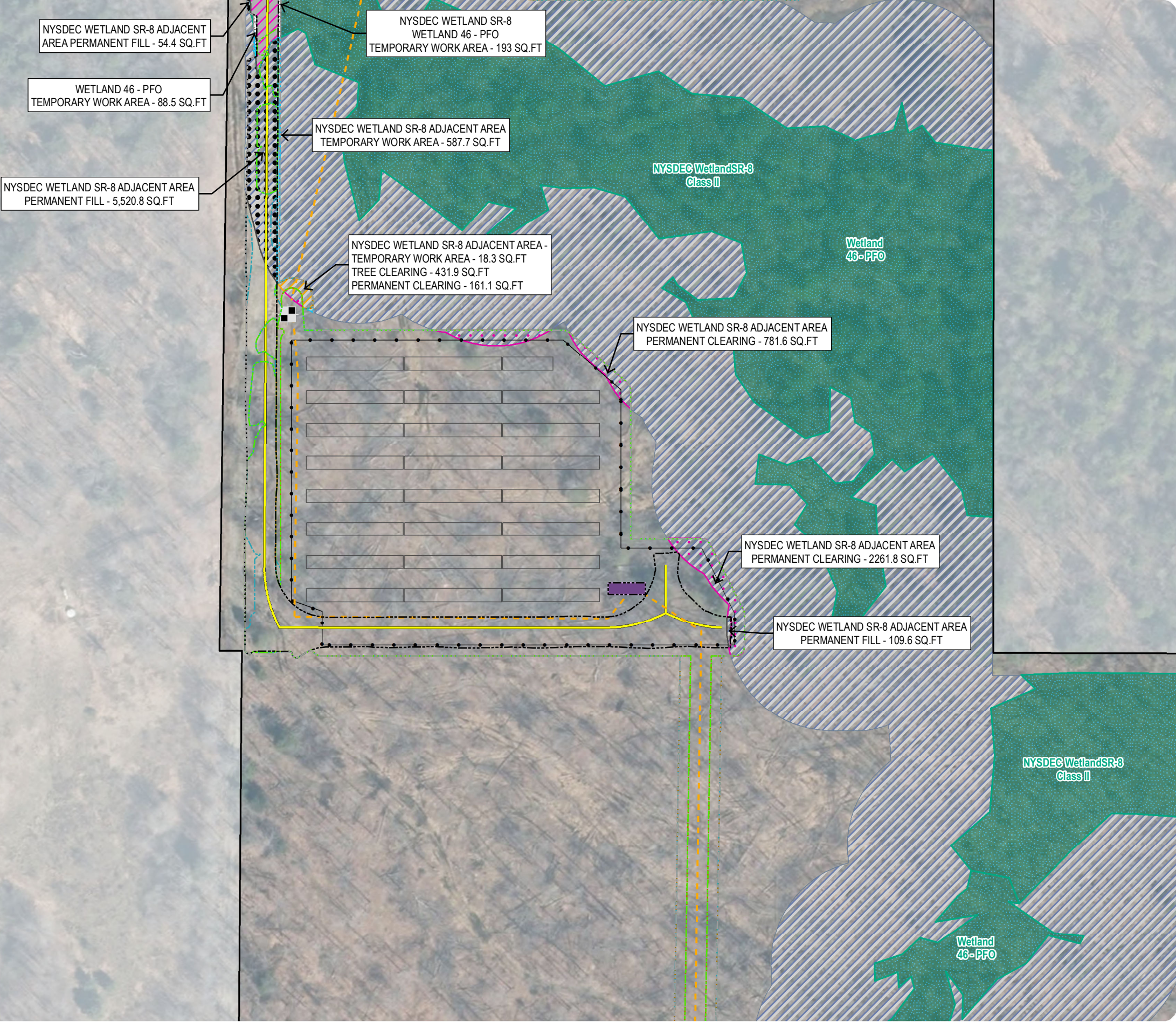
Appendix S14-C: Wetland and Stream Impact Drawings

- Wetland/Stream Impacts
- Permanent NYSDEC Regulated Adjacent Area Impact - Clearing
  - Permanent NYSDEC Regulated Adjacent Area Impact - Fill
  - Permanent Wetland Impact - Fill
  - Temporary NYSDEC Regulated Adjacent Area Impact - Work Area
  - Temporary NYSDEC Regulated Adjacent Area Impact - Tree Clearing
  - Temporary Wetland Impact - Work Area
- Delineated Wetlands/Streams
- Delineated Wetland w/ State & Federal Jurisdiction
  - Regulated Adjacent Area Wetland
- Facility Components
- Access Road
  - Underground Collection Line
  - HDD Location
  - Inverter
  - PV Panel
  - Fenceline
  - Facility Site
  - Limit of Disturbance - Permanent Fill
  - Limit of Disturbance - Temporary Soil Disturbance
  - Limit of Disturbance - Grubbing
  - Limit of Disturbance - Tree Clearing
  - Limit of Disturbance - Temporary Work Area



Sheet 26 of 69

Notes: 1. Basemap: NYSDOP "2016" orthoimagery map service. 2. This map was generated in ArcMap on January 11, 2022. 3. This is a color graphic. Reproduction in grayscale may misrepresent the data.





# South Ripley Solar Project

Town of Ripley, Chautauqua County, New York

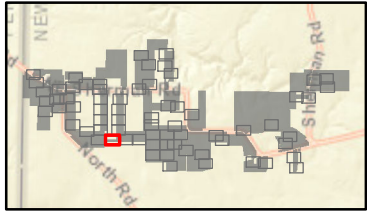
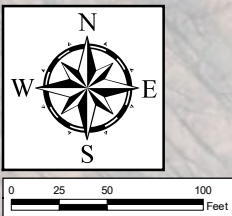
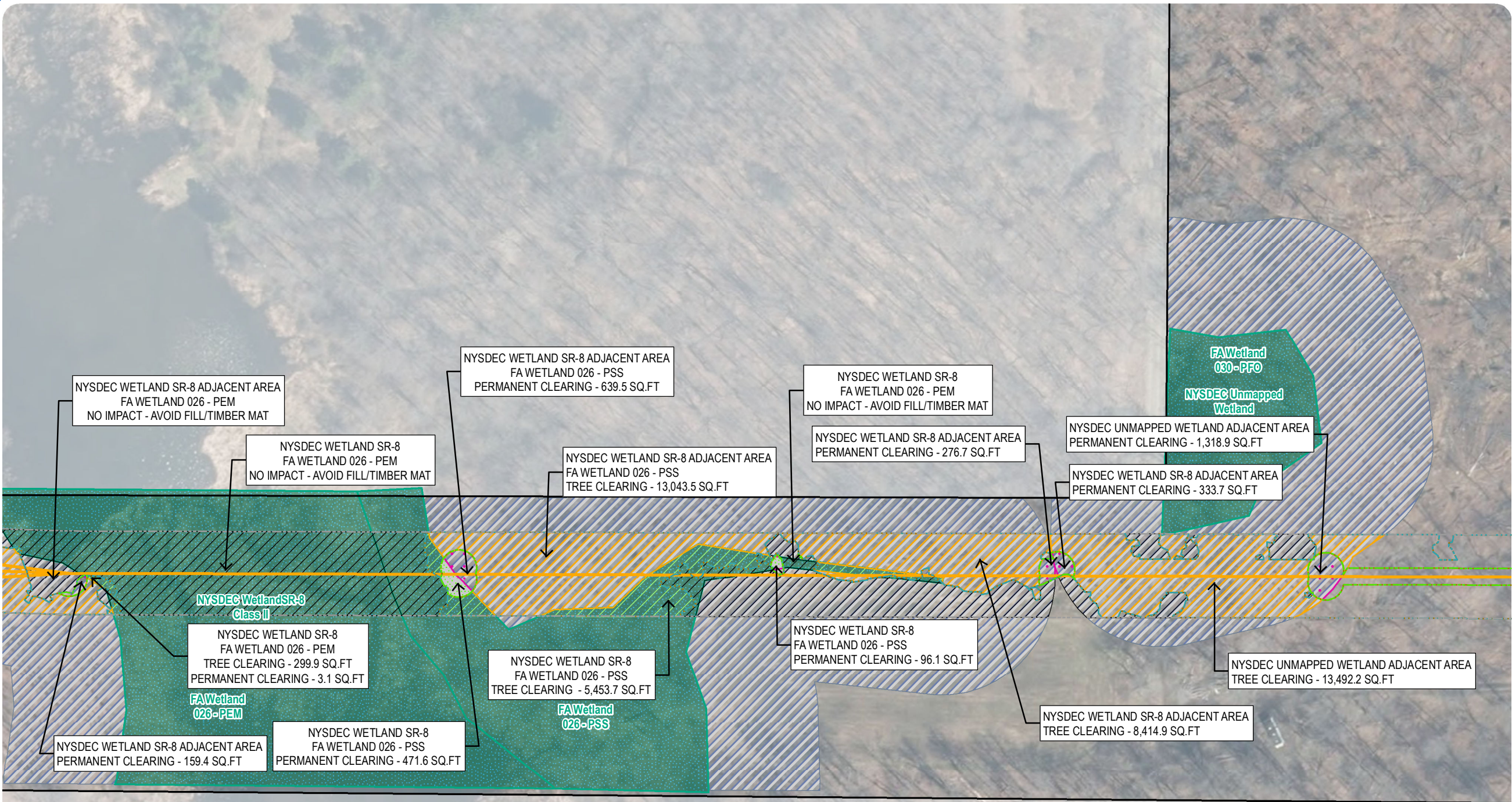
Section 94-c

Application Supplement

Matter No. 21-00750

## Appendix S14-C: Wetland and Stream Impact Drawings

- Wetland/Stream Impacts
- Permanent NYSDEC Regulated Adjacent Area Impact - Clearing
  - Permanent Wetland Impact - Clearing
  - Temporary NYSDEC Regulated Adjacent Area Impact - Work Area
  - Temporary NYSDEC Regulated Adjacent Area Impact - Tree Clearing
  - Temporary Wetland Impact - Work Area
  - Temporary Wetland Impact - Tree Clearing
  - Area of No Impact
- Delineated Wetlands/Streams
- Delineated Wetland w/ State & Federal Jurisdiction
  - Regulated Adjacent Area Wetland
- Facility Components
- Access Road
  - Overhead Collection Line
  - PV Panel
  - Facility Site
  - Limit of Disturbance - Temporary Soil Disturbance
  - Limit of Disturbance - Grubbing
  - Limit of Disturbance - Tree Clearing
  - Limit of Disturbance - Temporary Work Area



Sheet 27 of 69

Notes: 1. Basemap: NYSDOP "2016" orthoimagery map service. 2. This map was generated in ArcMap on January 11, 2022. 3. This is a color graphic. Reproduction in grayscale may misrepresent the data.





# South Ripley Solar Project

Town of Ripley, Chautauqua County, New York

Section 94-c

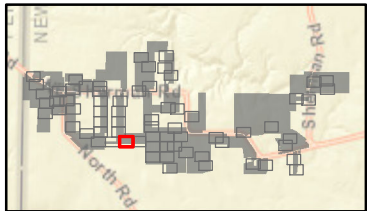
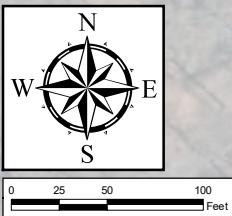
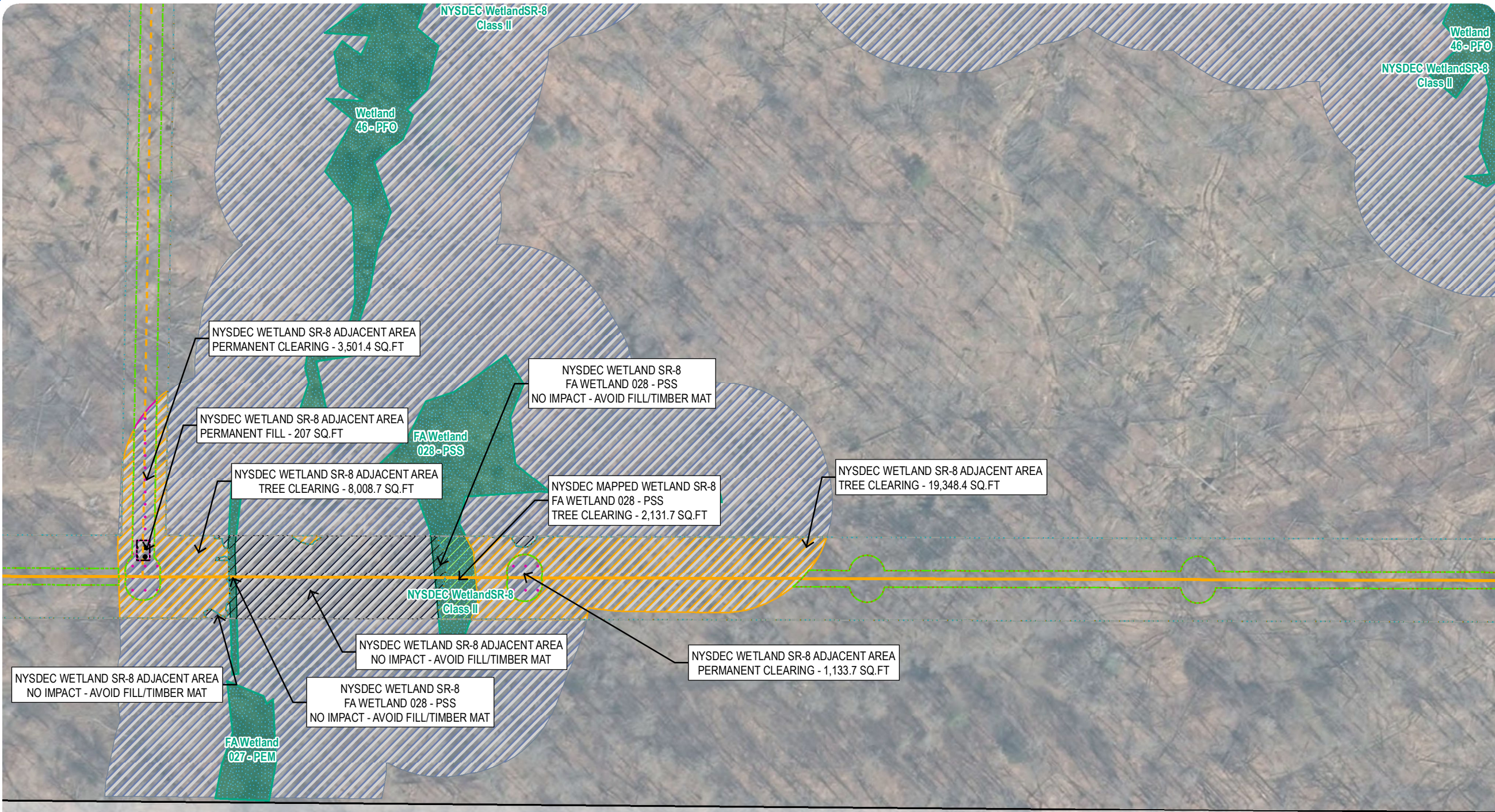
Application Supplement

Matter No. 21-00750

## Appendix S14-C: Wetland and Stream Impact Drawings

### Wetland/Stream Impacts

- Permanent NYSDEC Regulated Adjacent Area Impact - Clearing
- Permanent NYSDEC Regulated Adjacent Area Impact - Fill
- Temporary NYSDEC Regulated Adjacent Area Impact - Tree Clearing
- Temporary Wetland Impact - Tree Clearing
- Area of No Impact
- Delineated Wetlands/Streams
  - Delineated Wetland w/ State & Federal Jurisdiction
  - Regulated Adjacent Area Wetland
- Facility Components
  - Access Road
  - Overhead Collection Line
  - Underground Collection Line
  - PV Panel
  - Facility Site
  - Limit of Disturbance - Permanent Fill
  - Limit of Disturbance - Temporary Soil Disturbance
  - Limit of Disturbance - Grubbing
  - Limit of Disturbance - Tree Clearing
  - Limit of Disturbance - Temporary Work Area



Sheet 28 of 69

Notes: 1. Basemap: NYSDOP "2016" orthoimagery map service. 2. This map was generated in ArcMap on January 11, 2022. 3. This is a color graphic. Reproduction in grayscale may misrepresent the data.





# South Ripley Solar Project

Town of Ripley, Chautauqua County, New York

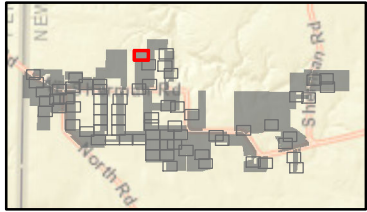
Section 94-c

Application Supplement

Matter No. 21-00750

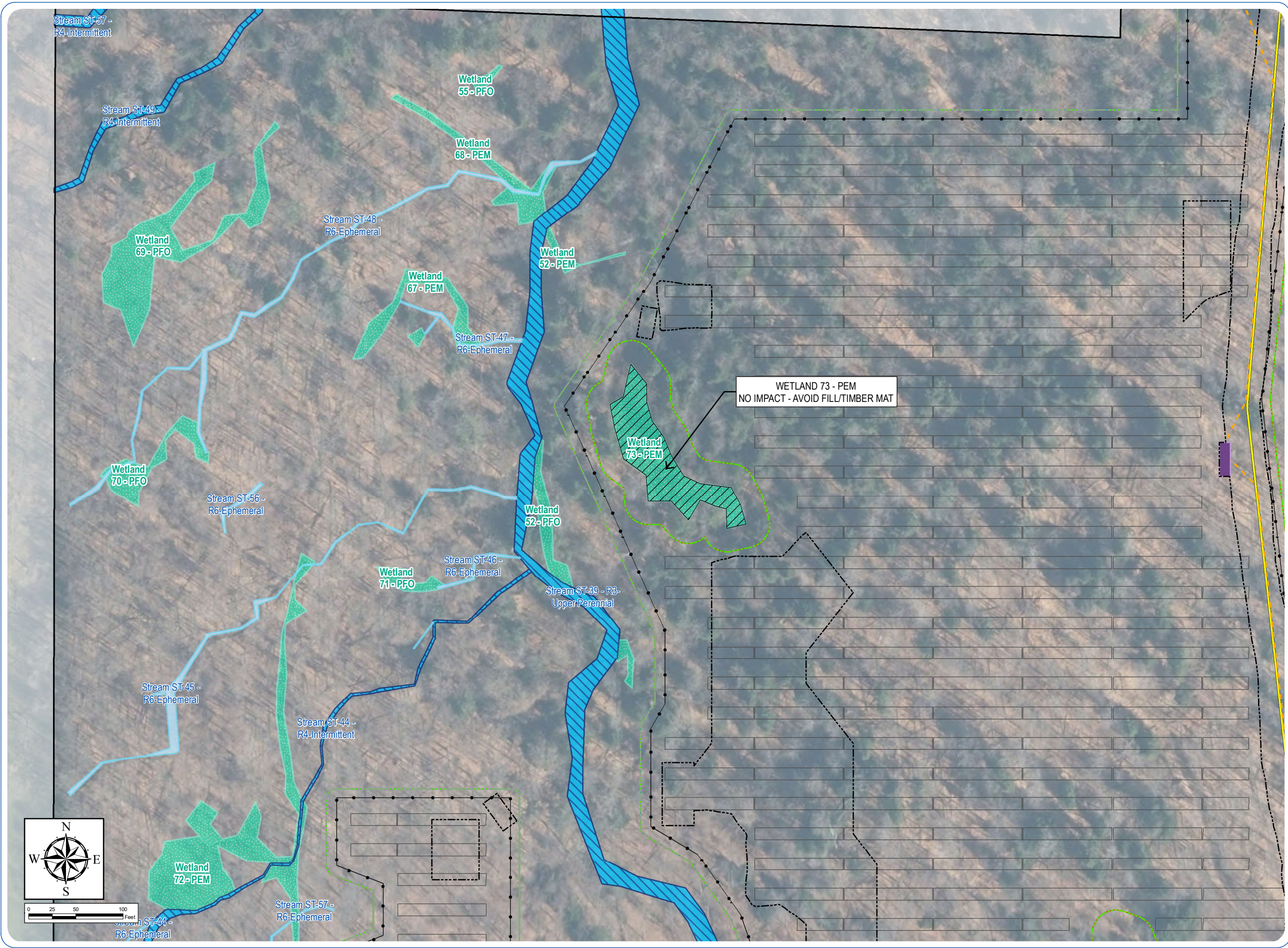
## Appendix S14-C: Wetland and Stream Impact Drawings

- Wetland/Stream Impacts
- Area of No Impact
- Delineated Wetlands/Streams
- Delineated Wetland w/ Federal Jurisdiction
  - Delineated Stream Non-Jurisdictional
  - Delineated Stream w/ Federal Jurisdiction
- Facility Components
- Access Road
  - Underground Collection Line
  - Inverter
  - PV Panel
  - Fenceline
  - Facility Site
  - Limit of Disturbance - Permanent Fill
  - Limit of Disturbance - Temporary Soil Disturbance
  - Limit of Disturbance - Grubbing
  - Limit of Disturbance - Tree Clearing
  - Limit of Disturbance - Temporary Work Area



Sheet 29 of 69

Notes: 1. Basemap: NYSDOP "2016" orthoimagery map service. 2. This map was generated in ArcMap on January 11, 2022. 3. This is a color graphic. Reproduction in grayscale may misrepresent the data.





South Ripley Solar Project

Town of Ripley, Chautauqua County, New York

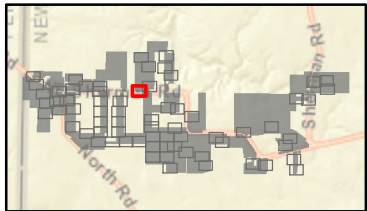
Section 94-c

Application Supplement

Matter No. 21-00750

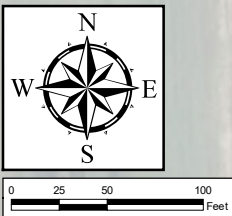
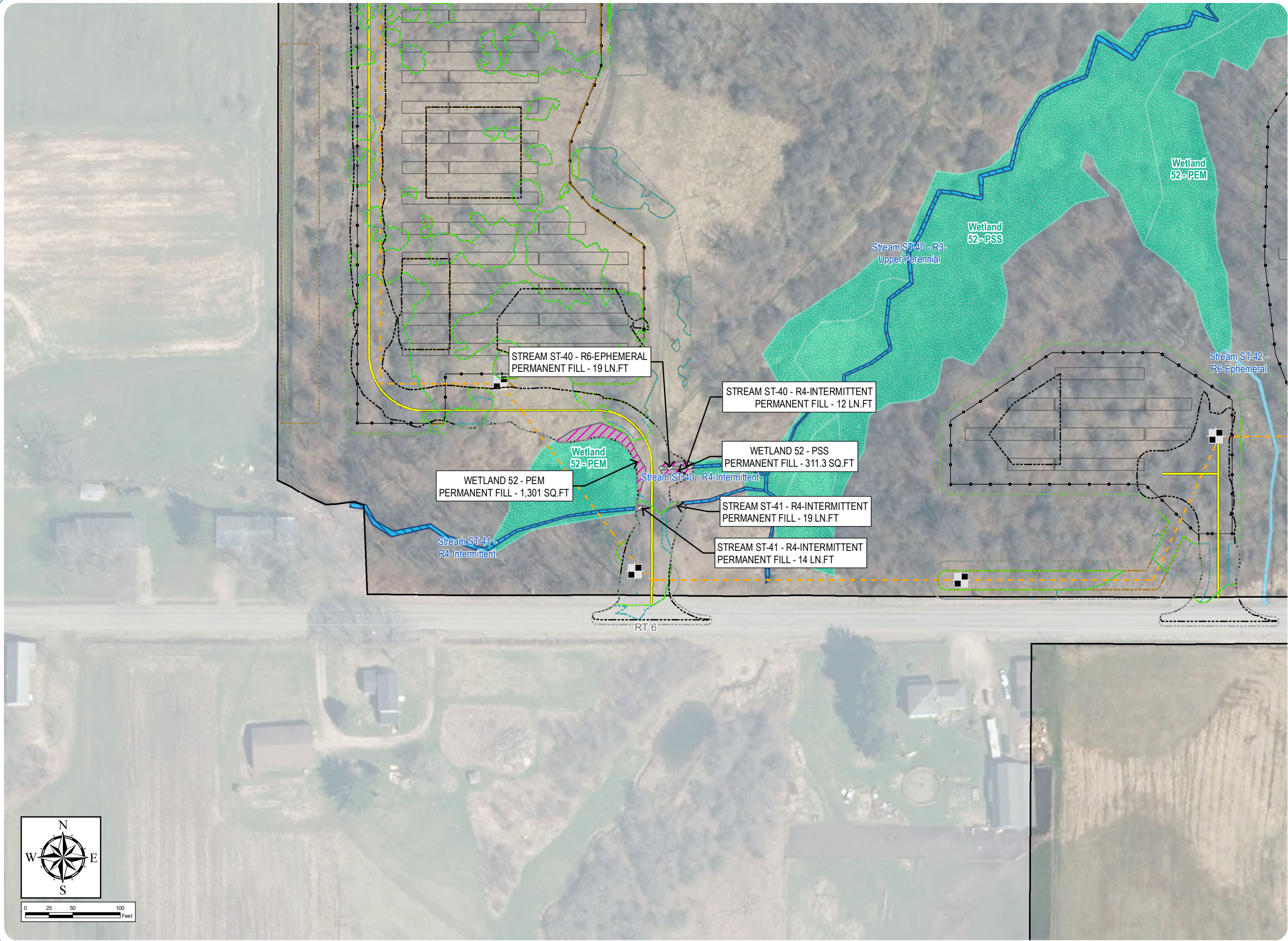
Appendix S14-C: Wetland and Stream Impact Drawings

- Wetland/Stream Impacts
- Permanent Stream Impact - Fill
  - Permanent Wetland Impact - Fill
- Delineated Wetlands/Streams
- Delineated Wetland w/ Federal Jurisdiction
  - Delineated Stream Non-Jurisdictional
  - Delineated Stream w/ Federal Jurisdiction
- Facility Components
- Access Road
  - Underground Collection Line
  - HDD Location
  - PV Panel
  - Fenceline
  - Facility Site
  - Limit of Disturbance - Permanent Fill
  - Limit of Disturbance - Temporary Soil Disturbance
  - Limit of Disturbance - Grubbing
  - Limit of Disturbance - Tree Clearing
  - Limit of Disturbance - Temporary Work Area



Sheet 30 of 69

Notes: 1. Basemap: NYSDOP "2016" orthoimagery map service. 2. This map was generated in ArcMap on January 11, 2022. 3. This is a color graphic. Reproduction in grayscale may misrepresent the data.





South Ripley Solar Project

Town of Ripley, Chautauqua County, New York

Section 94-c

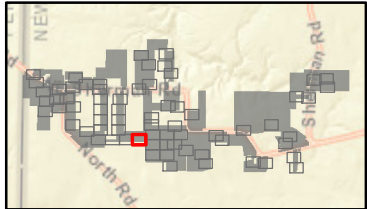
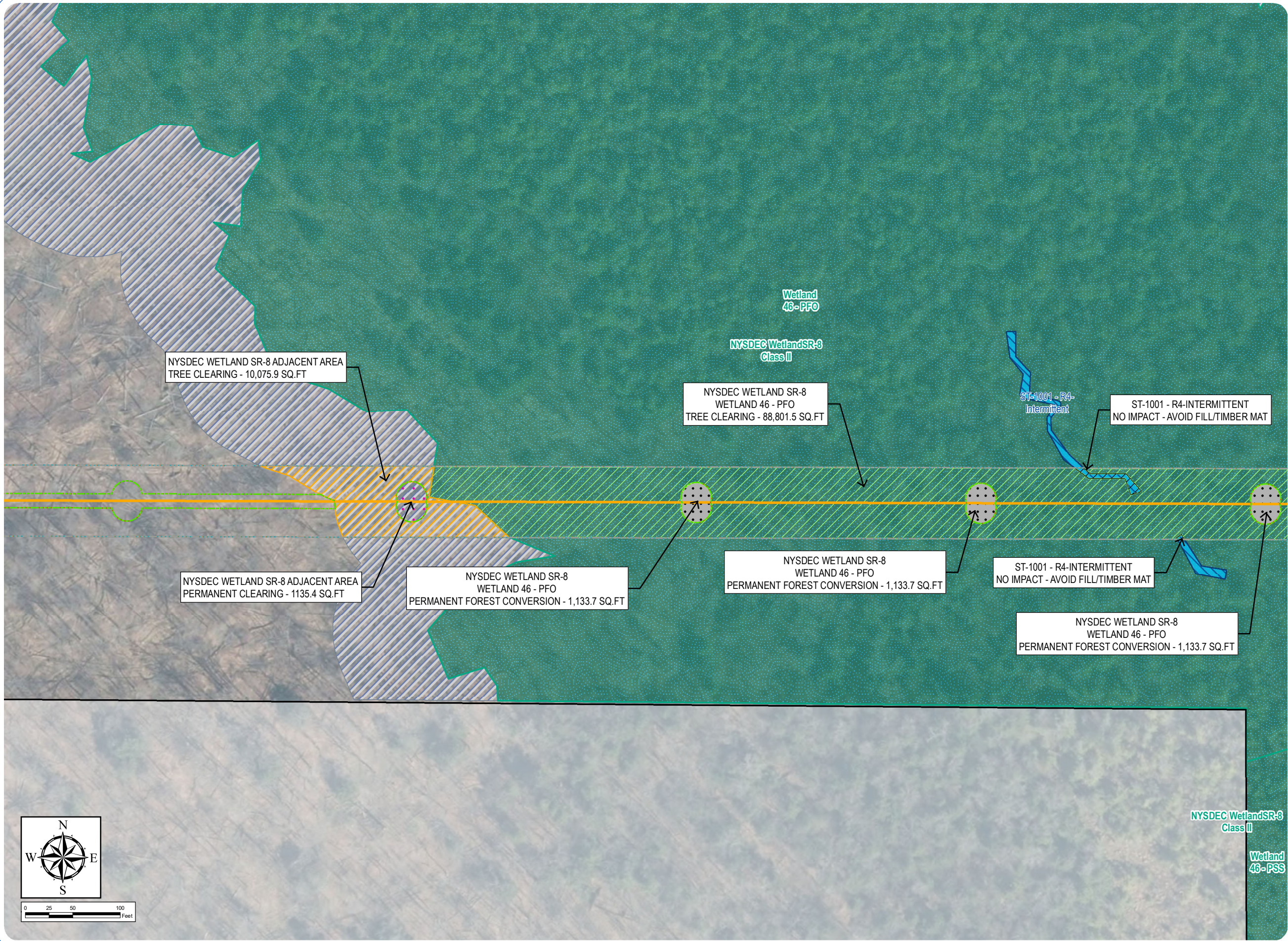
Application Supplement

Matter No. 21-00750

Appendix S14-C: Wetland and Stream Impact Drawings

Wetland/Stream Impacts

- Permanent NYSDEC Regulated Adjacent Area Impact - Clearing
- Permanent Forest Conversion Wetland Impact - Clearing
- Temporary NYSDEC Regulated Adjacent Area Impact - Tree Clearing
- Temporary Stream Impact - Work Area
- Temporary Wetland Impact - Work Area
- Temporary Wetland Impact - Tree Clearing
- Area of No Impact
- Delineated Wetlands/Streams
  - Delineated Wetland w/ State & Federal Jurisdiction
  - Delineated Stream w/ Federal Jurisdiction
  - Regulated Adjacent Area Wetland
- Facility Components
  - Access Road
  - Overhead Collection Line
  - PV Panel
  - Facility Site
- Limit of Disturbance - Temporary Soil Disturbance
- Limit of Disturbance - Grubbing
- Limit of Disturbance - Tree Clearing
- Limit of Disturbance - Temporary Work Area



Sheet 31 of 69

Notes: 1. Basemap: NYSDOP "2016" orthoimagery map service. 2. This map was generated in ArcMap on January 11, 2022. 3. This is a color graphic. Reproduction in grayscale may misrepresent the data.





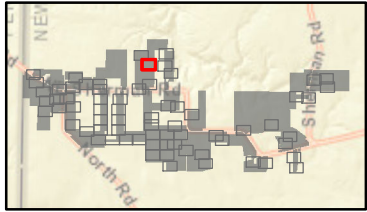
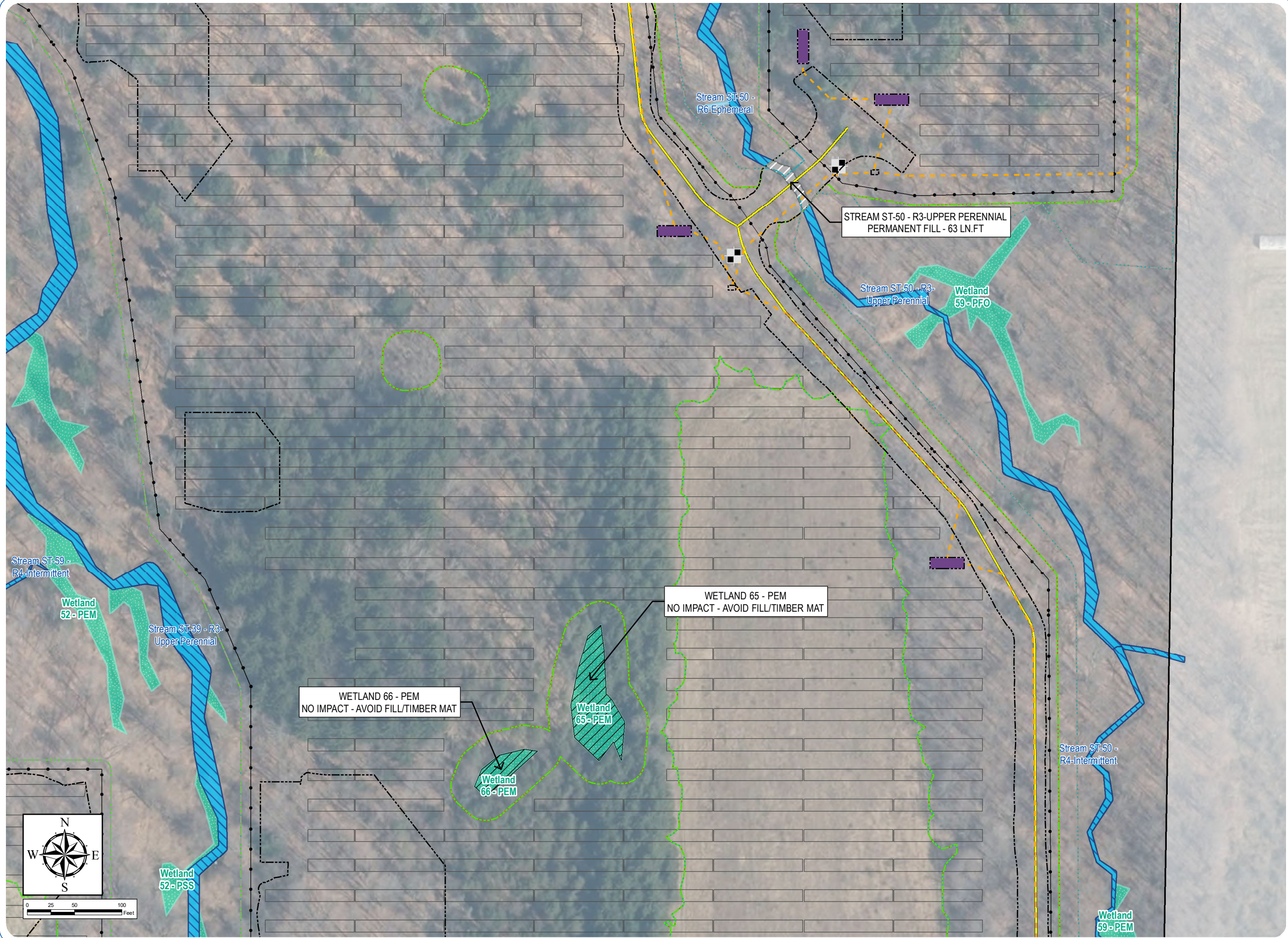
South Ripley Solar Project

Town of Ripley, Chautauqua County, New York

Section 94-c  
Application Supplement  
Matter No. 21-00750

Appendix S14-C: Wetland and Stream Impact Drawings

- Wetland/Stream Impacts
- Permanent Stream Impact - Fill
  - Area of No Impact
- Delineated Wetlands/Streams
- Delineated Wetland w/ Federal Jurisdiction
  - Delineated Stream Non-Jurisdictional
  - Delineated Stream w/ Federal Jurisdiction
- Facility Components
- Access Road
  - Underground Collection Line
  - HDD Location
  - Inverter
  - PV Panel
  - Fenceline
  - Facility Site
  - Limit of Disturbance - Permanent Fill
  - Limit of Disturbance - Temporary Soil Disturbance
  - Limit of Disturbance - Grubbing
  - Limit of Disturbance - Tree Clearing
  - Limit of Disturbance - Temporary Work Area



Sheet 32 of 69

Notes: 1. Basemap: NYSDOP "2016" orthoimagery map service. 2. This map was generated in ArcMap on January 11, 2022. 3. This is a color graphic. Reproduction in grayscale may misrepresent the data.





# South Ripley Solar Project

Town of Ripley, Chautauqua County, New York

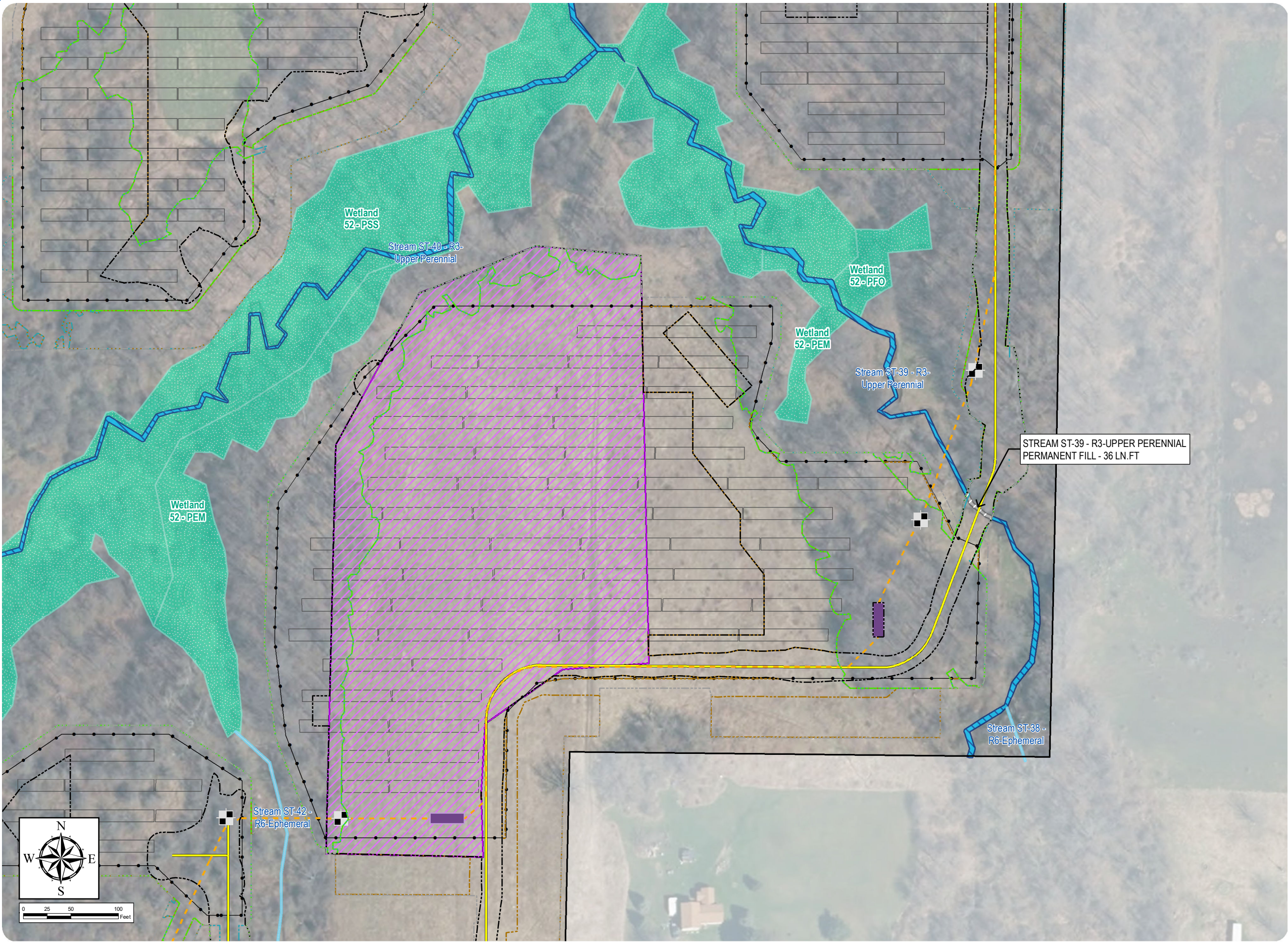
Section 94-c

Application Supplement

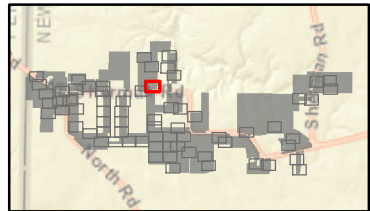
Matter No. 21-00750

## Appendix S14-C: Wetland and Stream Impact Drawings

- Wetland/Stream Impacts
- Permanent Stream Impact - Fill
- Delineated Wetlands/Streams
- Delineated Wetland w/ Federal Jurisdiction
  - Delineated Stream Non-Jurisdictional
  - Delineated Stream w/ Federal Jurisdiction
- Facility Components
- Access Road
  - Underground Collection Line
  - HDD Location
  - Inverter
  - Laydown Yard
  - PV Panel
  - Fenceline
  - Facility Site
  - Limit of Disturbance - Permanent Fill
  - Limit of Disturbance - Temporary Soil Disturbance
  - Limit of Disturbance - Grubbing
  - Limit of Disturbance - Tree Clearing
  - Limit of Disturbance - Temporary Work Area



STREAM ST-39 - R3-UPPER PERENNIAL  
PERMANENT FILL - 36 LN.FT



Sheet 33 of 69

Notes: 1. Basemap: NYSDOP "2016" orthoimagery map service. 2. This map was generated in ArcMap on January 11, 2022. 3. This is a color graphic. Reproduction in grayscale may misrepresent the data.

