

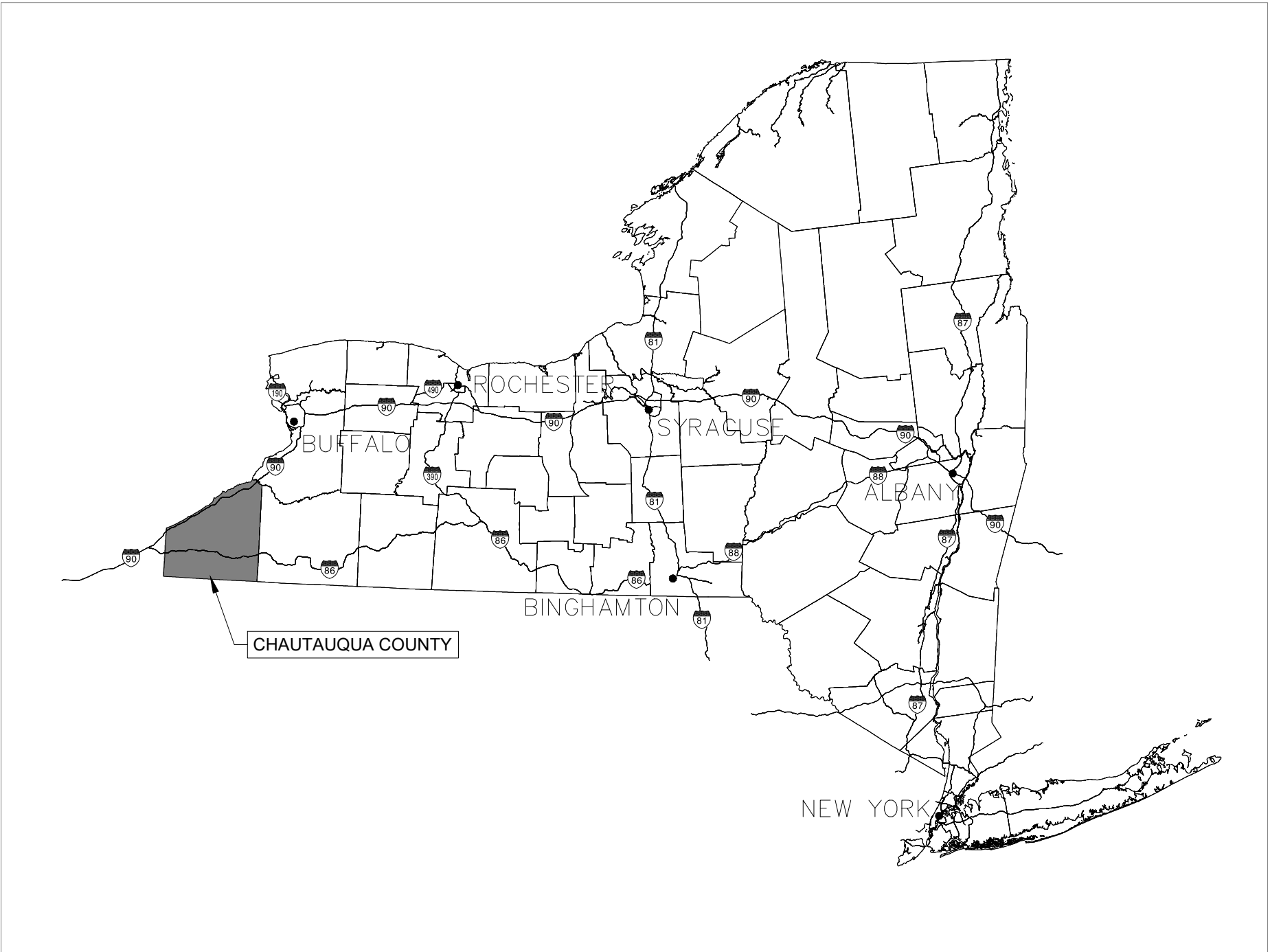
Solar Layout																			
Dwg. No.	Drawing Title	Date	Rev.	Date	Rev.	Date	Rev.	Date	Rev.	Date	Rev.	Date	Rev.	Date	Rev.	Date	Rev.	Date	Rev.
SRS-E-400-00	COVER SHEET	01/29/21	A	05/21/21	B	06/04/21	C	06/18/21	D	07/14/21	E	07/23/21	F						
SRS-E-400-01	OVERALL SITE PLAN	01/29/21	A	05/21/21	B	06/04/21	C	06/18/21	D	07/14/21	E	07/23/21	F						
SRS-E-400-02	ARRAY PARCEL DETAILS 1	01/29/21	A	05/21/21	B	06/04/21	C	06/18/21	D	07/14/21	E	07/23/21	F						
SRS-E-400-03	ARRAY PARCEL DETAILS 2	01/29/21	A	05/21/21	B	06/04/21	C	06/18/21	D	07/14/21	E	07/23/21	F						
SRS-E-400-04	ARRAY PARCEL DETAILS 3	01/29/21	A	05/21/21	B	06/04/21	C	06/18/21	D	07/14/21	E	07/23/21	F						
SRS-E-400-05	ARRAY PARCEL DETAILS 4	01/29/21	A	05/21/21	B	06/04/21	C	06/18/21	D	07/14/21	E	07/23/21	F						
SRS-E-400-06	ARRAY PARCEL DETAILS 5	01/29/21	A	05/21/21	B	06/04/21	C	06/18/21	D	07/14/21	E	07/23/21	F						
SRS-E-400-07	ARRAY PARCEL DETAILS 6	01/29/21	A	05/21/21	B	06/04/21	C	06/18/21	D	07/14/21	E	07/23/21	F						
SRS-E-400-08	ARRAY PARCEL DETAILS 7	01/29/21	A	05/21/21	B	06/04/21	C	06/18/21	D	07/14/21	E	07/23/21	F						
SRS-E-400-09	ARRAY PARCEL DETAILS 8	01/29/21	A	05/21/21	B	06/04/21	C	06/18/21	D	07/14/21	E	07/23/21	F						
SRS-E-400-10	ARRAY PARCEL DETAILS 9	01/29/21	A	05/21/21	B	06/04/21	C	06/18/21	D	07/14/21	E	07/23/21	F						
SRS-E-400-11	ARRAY PARCEL DETAILS 10	01/29/21	A	05/21/21	B	06/04/21	C	06/18/21	D	07/14/21	E	07/23/21	F						
SRS-E-400-12	ARRAY PARCEL DETAILS 11	01/29/21	A	05/21/21	B	06/04/21	C	06/18/21	D	07/14/21	E	07/23/21	F						
SRS-E-400-13	ARRAY PARCEL DETAILS 12	01/29/21	A	05/21/21	B	06/04/21	C	06/18/21	D	07/14/21	E	07/23/21	F						
SRS-E-400-14	ARRAY PARCEL DETAILS 13	01/29/21	A	05/21/21	B	06/04/21	C	06/18/21	D	07/14/21	E	07/23/21	F						
SRS-E-400-15	ARRAY PARCEL DETAILS 14	01/29/21	A	05/21/21	B	06/04/21	C	06/18/21	D	07/14/21	E	07/23/21	F						
SRS-E-400-16	ARRAY PARCEL DETAILS 15	01/29/21	A	05/21/21	B	06/04/21	C	06/18/21	D	07/14/21	E	07/23/21	F						
SRS-E-400-17	ARRAY PARCEL DETAILS 16	01/29/21	A	05/21/21	B	06/04/21	C	06/18/21	D	07/14/21	E	07/23/21	F						
SRS-E-401-01	TYPICAL DC ONE LINE	01/29/21	A	05/21/21	B	06/04/21	C	06/18/21	D	07/14/21	E	07/23/21	F						
SRS-E-402-01	PV TYPICAL	01/29/21	A	05/21/21	B	06/04/21	C	06/18/21	D	07/14/21	E	07/23/21	F						
SRS-E-403-01	TRANSFORMER STATION SECTIONS AND ELEVATIONS	01/29/21	A	05/21/21	B	06/04/21	C	06/18/21	D	07/14/21	E	07/23/21	F						
SRS-E-404-01	GROUNDING DETAILS	01/29/21	A	05/21/21	B	06/04/21	C	06/18/21	D	07/14/21	E	07/23/21	F						
SRS-E-405-01	PCS COMMUNICATION DIAGRAM	01/29/21	A	05/21/21	B	06/04/21	C	06/18/21	D	07/14/21	E	07/23/21	F						
SRS-E-406-01	EQUIPMENT SPECIFICATIONS	01/29/21	A	05/21/21	B	06/04/21	C	06/18/21	D	07/14/21	E	07/23/21	F						
SRS-E-407-01	TYPICAL DC TRENCH DETAILS	01/29/21	A	05/21/21	B	06/04/21	C	06/18/21	D	07/14/21	E	07/23/21	F						
SRS-E-408-01	TYPICAL DC TRENCH DETAILS	01/29/21	A	05/21/21	B	06/04/21	C	06/18/21	D	07/14/21	E	07/23/21	F						
SRS-E-409-01	EXTERIOR O&M STORAGE	07/27/21	A																
SRS-BESS-GA-001	BESS GENERAL ARRANGEMENT	10/09/20	A	11/16/20	B	12/09/20	C	05/21/21	D	06/04/21	E	06/18/21	F	07/14/21	G	07/23/21	H		
SRS-BESS-E-100	BESS ELEVATION	05/21/21	A	06/04/21	B	06/18/21	C	07/14/21	D	07/23/21	E								
SRS-BESS-LP-001	YARD LIGHTNING PLAN	05/21/21	A	06/04/21	B	06/18/21	C	07/14/21	D	07/23/21	E								

** THESE DESIGN DRAWINGS HAVE BEEN CREATED AT THE DIRECTION OF A PROFESSIONAL ENGINEER LICENSED IN THE STATE OF NEW YORK.

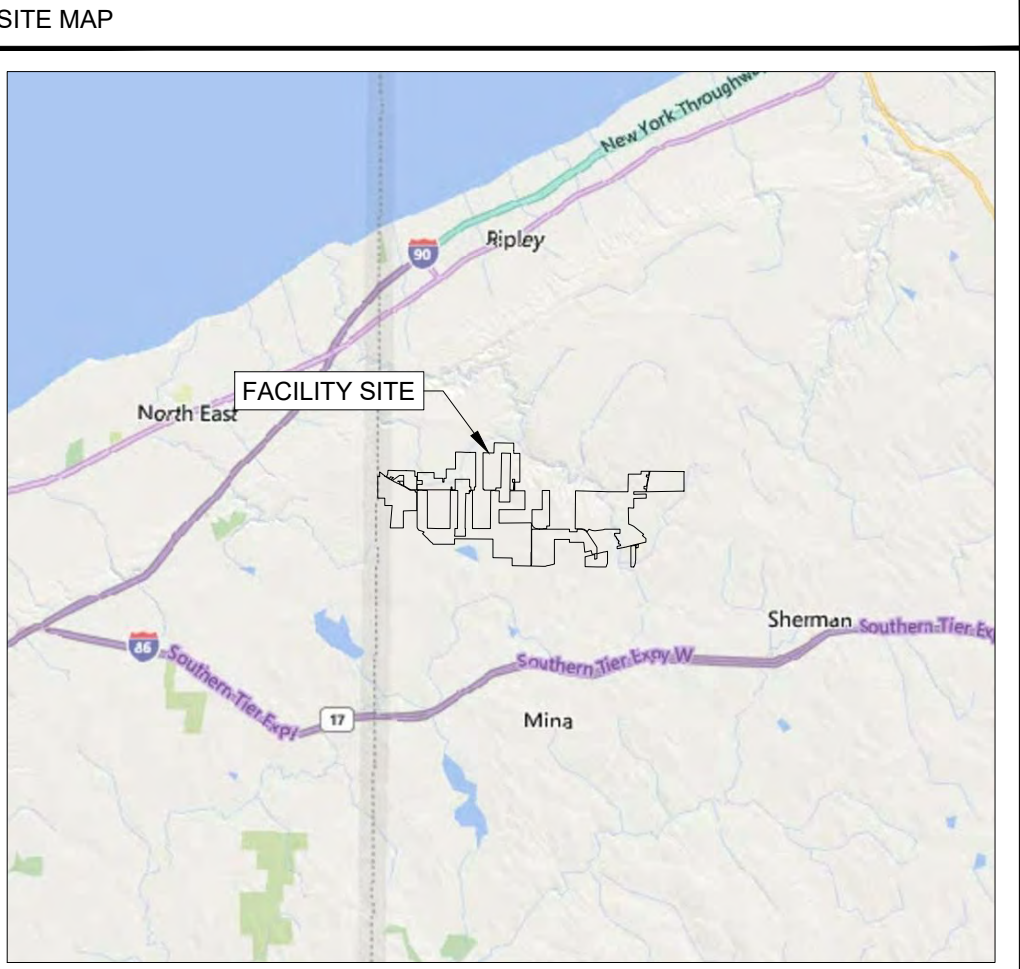
SOUTH RIPLEY SOLAR PROJECT

PREPARED FOR: CONNECTGEN CHAUTAUQUA COUNTY LLC
PREPARED BY: MOTT MACDONALD NY, INC
ISSUE DATE: JULY 23, 2021
ISSUE STATUS: ISSUED FOR 94-C

PROJECT DATA:
LOCATION: CHAUTAUQUA COUNTY, NY
PROJECTION: STATE PLANE NAD 83 (NY83-WF)
POWER GENERATED: 270 MWac



THE STATE OF NEW YORK



F	07/23/2021	JLL	ISSUED FOR 94-C	JS	JAB
E	07/14/2021	JLL	ISSUED FOR REVIEW	JS	JAB
D	06/18/2021	JLL	ISSUED FOR REVIEW	DD	JAB
C	06/04/2021	JLL	ISSUED FOR REVIEW	DD	JAB
B	05/21/2021	JLL	ISSUED FOR REVIEW	DD	JAB
Rev	Date	Drawn	Description	Ch'k'd	App'd

M

M

MOTT
MACDONALD

101 Station Drive
Suite 130
Westwood, MA 02090
United States
T +1 (781) 915-0015
F +1 (781) 915-0001
W www.mottmac.com

Client

G

South Ripley
SOLAR PROJECT

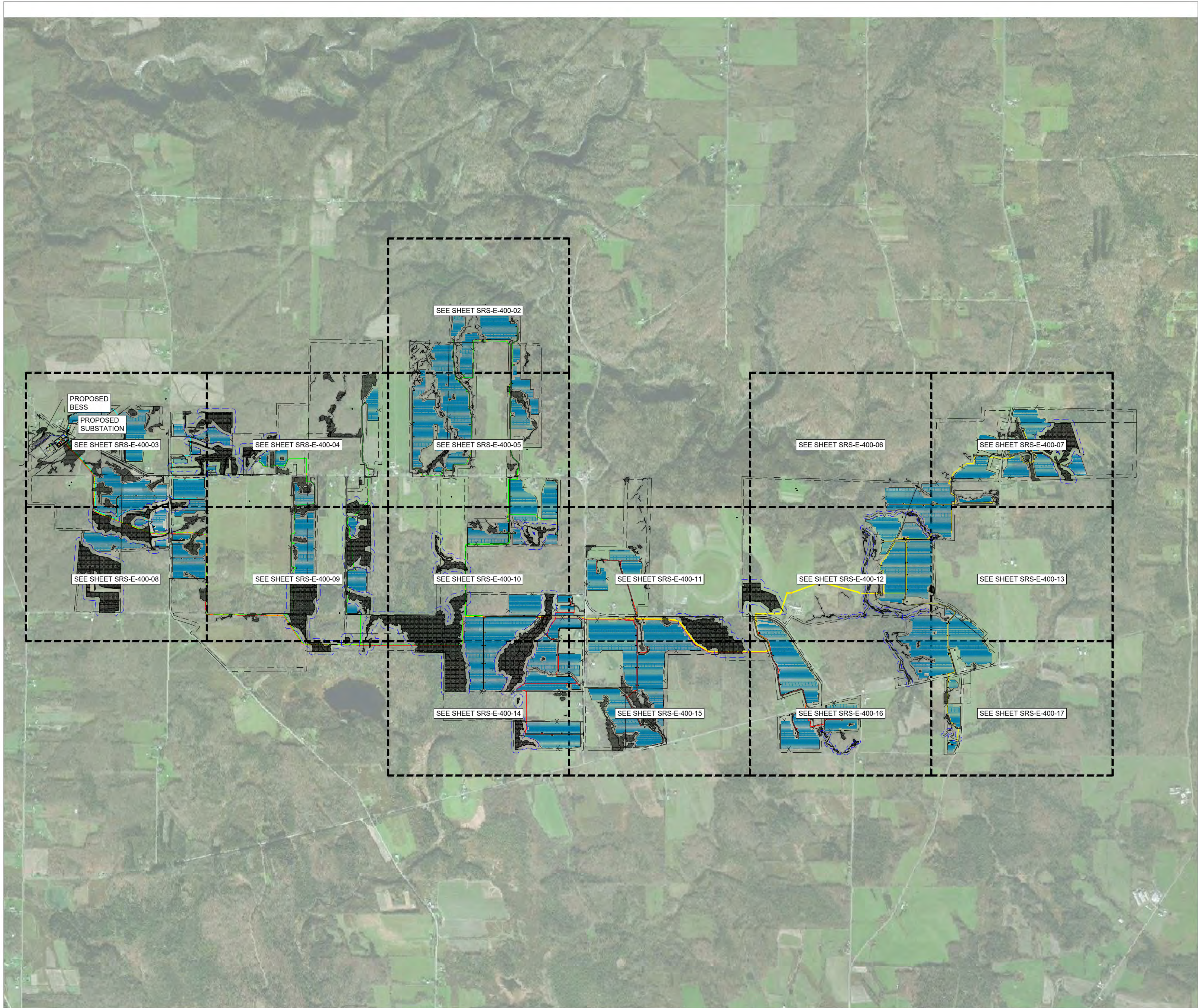
Title

SOUTH RIPLEY SOLAR
ELECTRICAL SOLAR
COVER SHEET

PRELIMINARY NOT FOR CONSTRUCTION REPLACE WITH ENGINEERS STAMP AT CONSTRUCTION AND/OR FABRICATION	Designed	BG	Eng check	JS
	Drawn	JLL	Approved	JAB
	Dwg check		Project Mngr	RA
	Scale at ANSI D	NONE	Date	Rev
	Drawing Number	SRS-E-400-00		

© Mott MacDonald
It is a violation of New York state Education Law for any person, unless acting under the direction of a licensed engineer to alter this document in any way.
This document is issued for the party which commissioned it and for specific purposes connected with the captioned project only. It should not be relied upon by any other party or used for any other purpose.
We accept no responsibility for the consequences of this document being relied upon by any other party, or being used for any other purpose, or containing any error or omission which is due to an error or omission in data supplied to us by other parties.

CONCEPTUAL - NOT FOR CONSTRUCTION



Site Data	
CAPACITY (AC):	270MW
CAPACITY (DC):	344.9MW
PV MODULES	
MFR:	CANADIAN SOLAR
MODEL:	CS6Y-560MB-AG
NAMEPLATE:	560Wp
QUANTITY:	615,875
INVERTERS	
MFR:	KACO
MODEL:	BLUEPLANET 150TL3
NAMEPLATE:	135.1kW / 150kVA
QUANTITY:	2,058
ARRAY	
MFR:	FLEXRACK SERIES G3-X
TYPE:	FIXED TILT
TILT:	37°
GCR:	50%

Legend	
	TAX PARCEL BOUNDARY
	FENCE
	GRAVEL ROAD
	NYSDEC WETLANDS
	FEDERAL WETLANDS
	STREAMS
	SETBACK
	NYSDEC SETBACK
	GAS LINE
	34.5KV AERIAL LINE
	STRUCTURE & ID
	PERMANENT EASEMENT FOR AERIAL LINE
	AERIAL
	IN CONDUIT
	IN TRENCH
	1 MVA STEP-UP XFMR
	2 MVA STEP-UP XFMR
	3 MVA STEP-UP XFMR
	JUNCTION BOX
	BORING AREAS
	PAD MOUNTED SWITCHGEAR
	PCS ID
	CONDUIT ID
	FEEDER 1 CABLES
	FEEDER 2 CABLES
	FEEDER 3 CABLES
	FEEDER 4 CABLES
	34.5KV BESS CABLES

F	07/23/2021	JLL	ISSUED FOR 94-C	JS	JAB
E	07/14/2021	JLL	ISSUED FOR REVIEW	JS	JAB
D	06/18/2021	JLL	ISSUED FOR REVIEW	DD	JAB
C	06/04/2021	JLL	ISSUED FOR REVIEW	DD	JAB
B	05/21/2021	JLL	ISSUED FOR REVIEW	DD	JAB
Rev	Date	Drawn	Description	Ch'k'd	App'd

M

M

MOTT
MACDONALD

101 Station Drive
Suite 130
Westwood, MA 02090
United States
T +1 (781) 915-0015
F +1 (781) 915-0001
W www.mottmac.com

Client

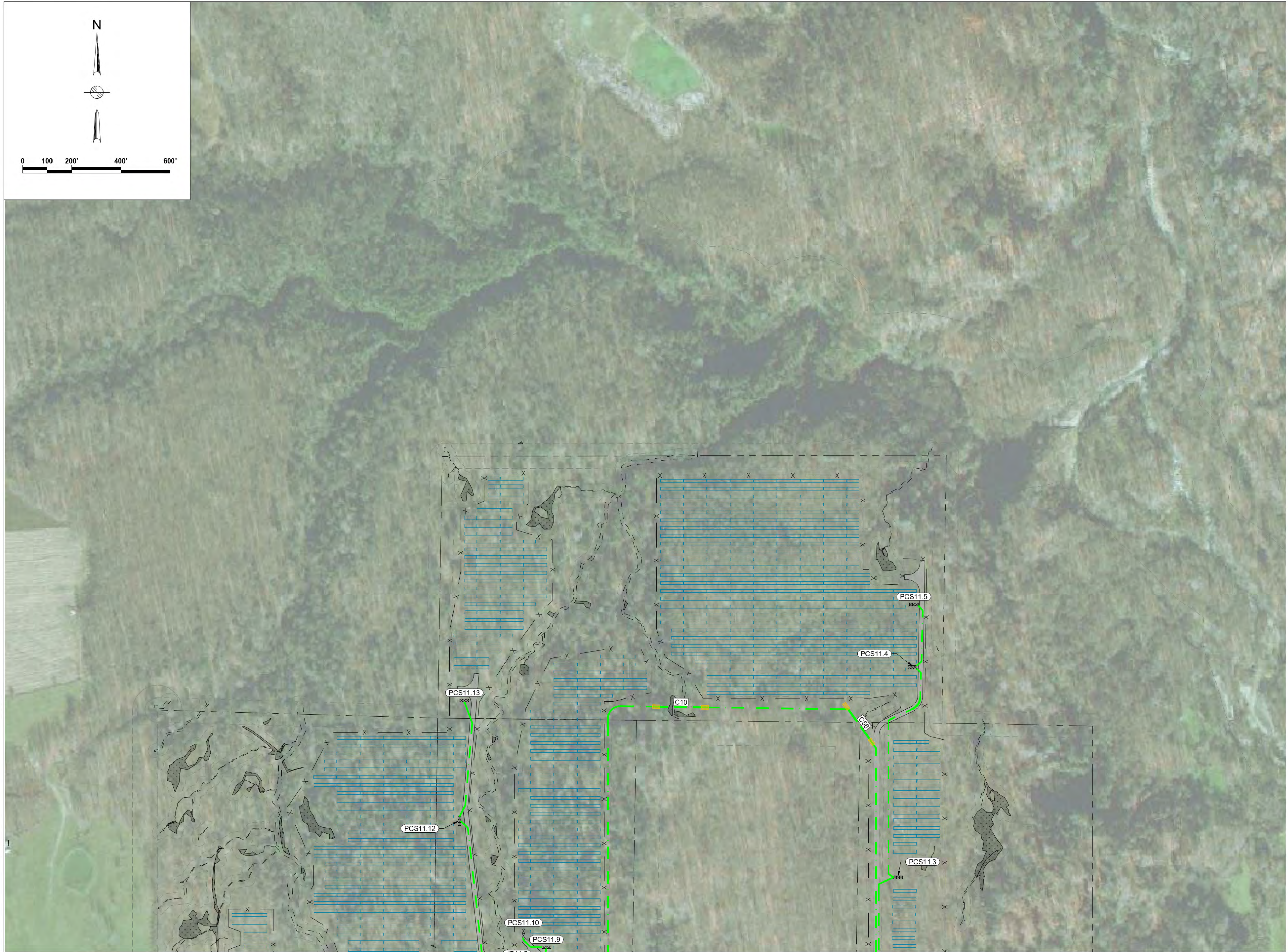
Title

SOUTH RIPLEY SOLAR
ELECTRICAL SOLAR
OVERALL SITE PLAN

PRELIMINARY NOT FOR CONSTRUCTION REPLACE WITH ENGINEERS STAMP AT CONSTRUCTION AND/OR FABRICATION	Designed	BG	Eng check	JS
	Drawn	JLL	Approved	JAB
	Dwg check		Project Mngr	RA
	Scale at ANSI D 1" = 1500'	Date	07/23/2021	Rev F
	Drawing Number	SRS-E-400-01		

© Mott MacDonald
It is a violation of New York state Education Law for any person, unless acting under the direction of a licensed engineer to alter this document in any way.
This document is issued for the party which commissioned it and for specific purposes connected with the captioned project only. It should not be relied upon by any other party or used for any other purpose.
We accept no responsibility for the consequences of this document being relied upon by any other party, or being used for any other purpose, or containing any error or omission which is due to an error or omission in data supplied to us by other parties.

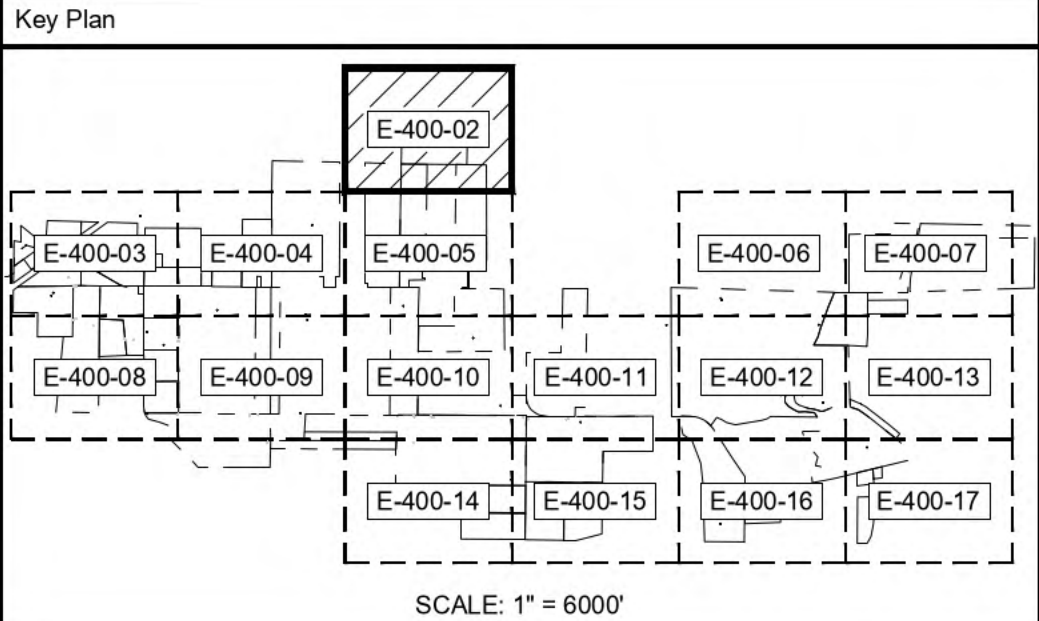
CONCEPTUAL - NOT FOR CONSTRUCTION



© Mott MacDonald
It is a violation of New York state Education Law for any person, unless acting under the direction of a licensed engineer to alter this document in any way.
This document is issued for the party which commissioned it and for specific purposes connected with the captioned project only. It should not be relied upon by any other party or used for any other purpose.
We accept no responsibility for the consequences of this document being relied upon by any other party, or being used for any other purpose, or containing any error or omission which is due to an error or omission in data supplied to us by other parties.

CONCEPTUAL - NOT FOR CONSTRUCTION

Legend			
	TAX PARCEL BOUNDARY		1 MVA STEP-UP XFMR
	FENCE		2 MVA STEP-UP XFMR
	GRAVEL ROAD		3 MVA STEP-UP XFMR
	NYSDEC WETLANDS		JUNCTION BOX
	FEDERAL WETLANDS		BORING AREAS
	STREAMS		PAD MOUNTED SWITCHGEAR
	SETBACK		PCS ID
	NYSDEC SETBACK		CONDUIT ID
	GAS		
	GAS LINE		
	34.5KV AERIAL LINE		
	STRUCTURE & ID		
	PERMANENT EASEMENT FOR AERIAL LINE		
	AERIAL		IN CONDUIT
	FEEDER 1 CABLES		IN TRENCH
	FEEDER 2 CABLES		FEEDER 3 CABLES
	FEEDER 4 CABLES		FEEDER 5 CABLES
	34.5KV BESS CABLES		



F	07/23/2021	JLL	ISSUED FOR 94-C	JS	JAB
E	07/14/2021	JLL	ISSUED FOR REVIEW	JS	JAB
D	06/18/2021	JLL	ISSUED FOR REVIEW	DD	JAB
C	06/04/2021	JLL	ISSUED FOR REVIEW	DD	JAB
B	05/21/2021	JLL	ISSUED FOR REVIEW	DD	JAB
Rev	Date	Drawn	Description	Ch'k'd	App'd

MOTT MACDONALD

101 Station Drive
Suite 130
Westwood, MA 02090
United States
T +1 (781) 915-0015
F +1 (781) 915-0001
W www.mottmac.com

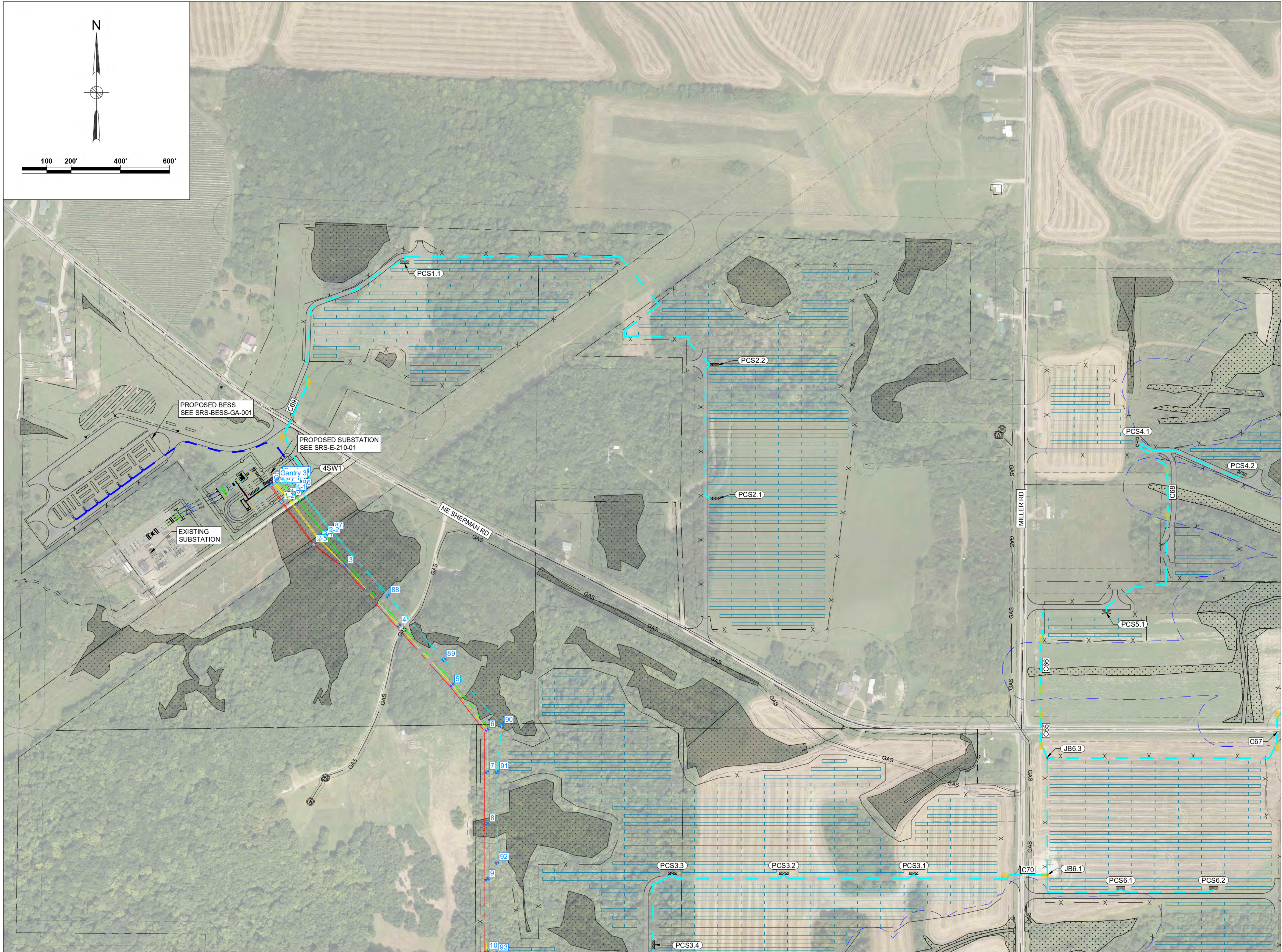
Client

South Ripley
SOLAR PROJECT

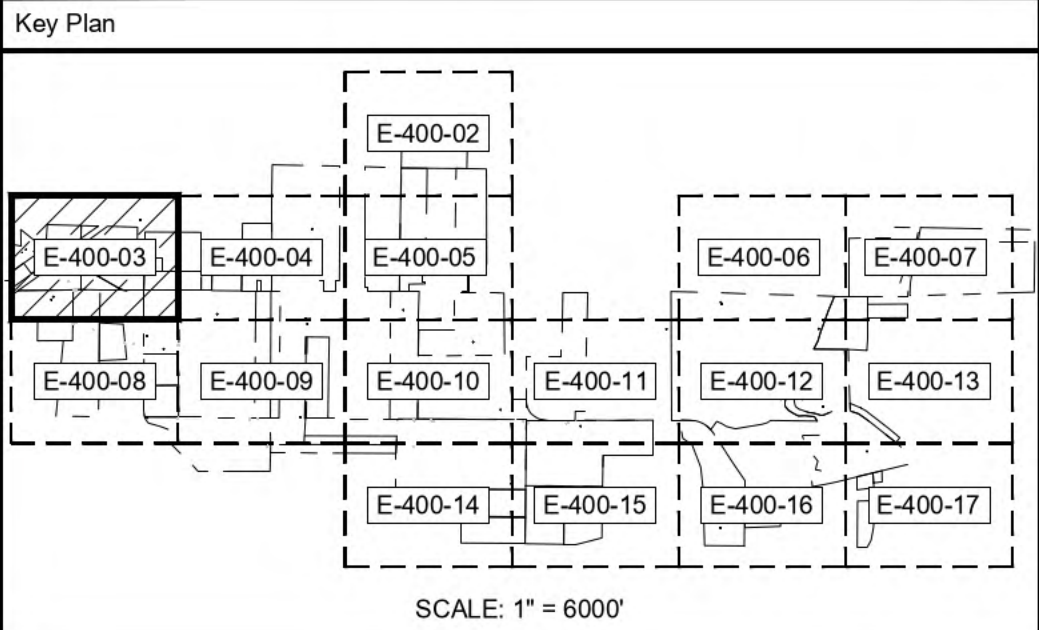
Title

**SOUTH RIPLEY SOLAR
ELECTRICAL SOLAR
ARRAY PARCEL DETAIL 1**

PRELIMINARY NOT FOR CONSTRUCTION REPLACE WITH ENGINEERS STAMP AT CONSTRUCTION AND/OR FABRICATION	Designed	BG	Eng check	JS
	Drawn	JLL	Approved	JAB
	Dwg check		Project Mngr	RA
	Scale at ANSI D 1" = 200'		Date	Rev
	Drawing Number		07/23/2021	F
SRS-E-400-02				



Legend			
	TAX PARCEL BOUNDARY		1 MVA STEP-UP XFMR
	FENCE		2 MVA STEP-UP XFMR
	GRAVEL ROAD		3 MVA STEP-UP XFMR
	NYSDEC WETLANDS		JUNCTION BOX
	FEDERAL WETLANDS		BORING AREAS
	STREAMS		PAD MOUNTED SWITCHGEAR
	SETBACK		PCS ID
	NYSDEC SETBACK		CONDUIT ID
	GAS		
	34.5KV AERIAL LINE		
	STRUCTURE & ID		
	PERMANENT EASEMENT FOR AERIAL LINE		
	<u>AERIAL</u>		<u>IN CONDUIT</u>
			<u>IN TRENCH</u>



F	07/23/2021	JLL	ISSUED FOR 94-C	JS	JAB
E	07/14/2021	JLL	ISSUED FOR REVIEW	JS	JAB
D	06/18/2021	JLL	ISSUED FOR REVIEW	DD	JAB
C	06/04/21	JLL	ISSUED FOR REVIEW	DD	JAB
B	05/21/2021	JLL	ISSUED FOR REVIEW	DD	JAB
Rev	Date	Drawn	Description	Ch'k'd	App'd

M
MOTT
MACDONALD

101 Station Drive
Suite 130
Westwood, MA 02090
United States
T +1 (781) 915-0015
F +1 (781) 915-0001
W www.mottmac.com

Client

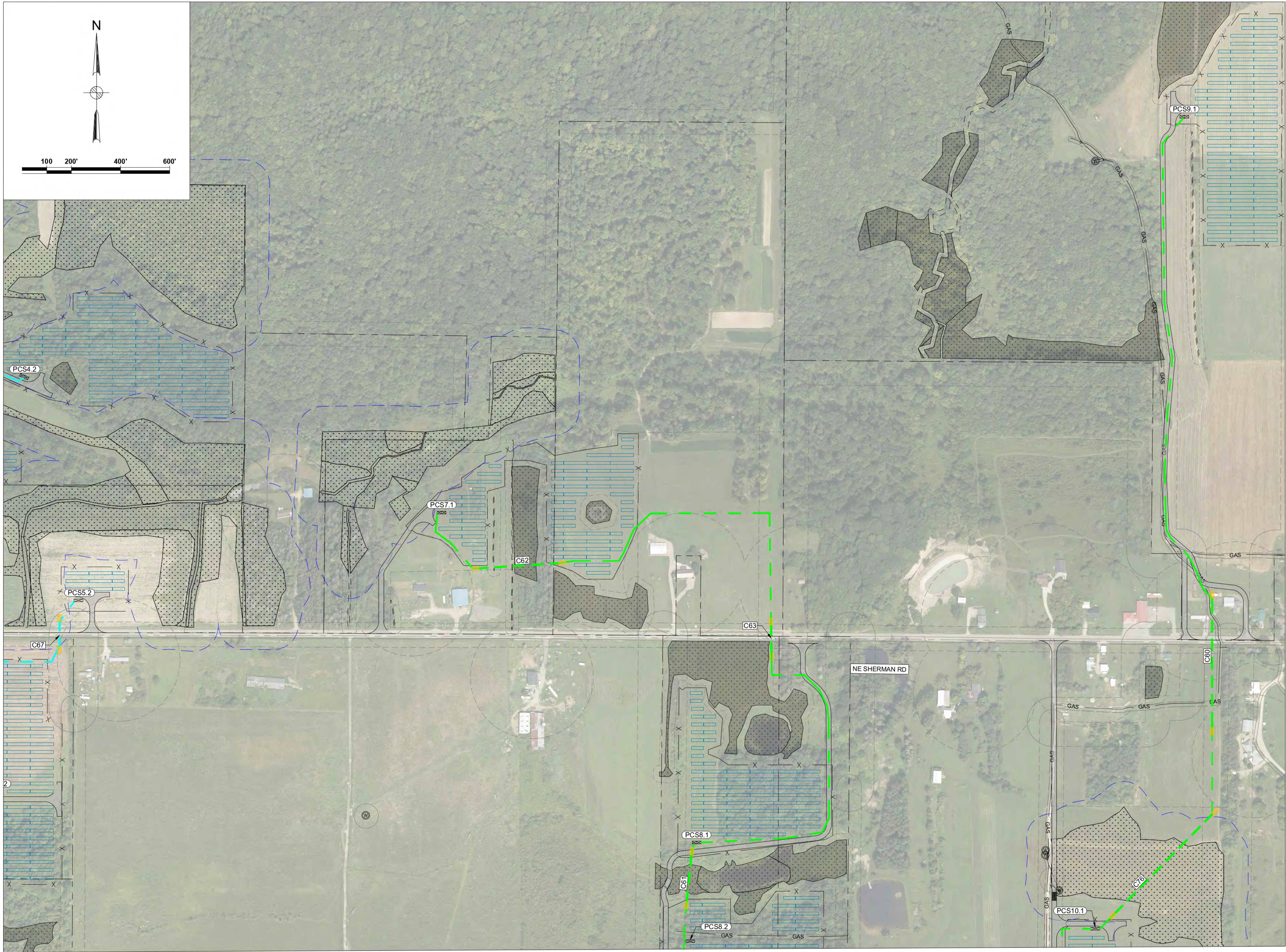
Title

**SOUTH RIPLEY SOLAR
ELECTRICAL SOLAR
ARRAY PARCEL DETAIL 2**

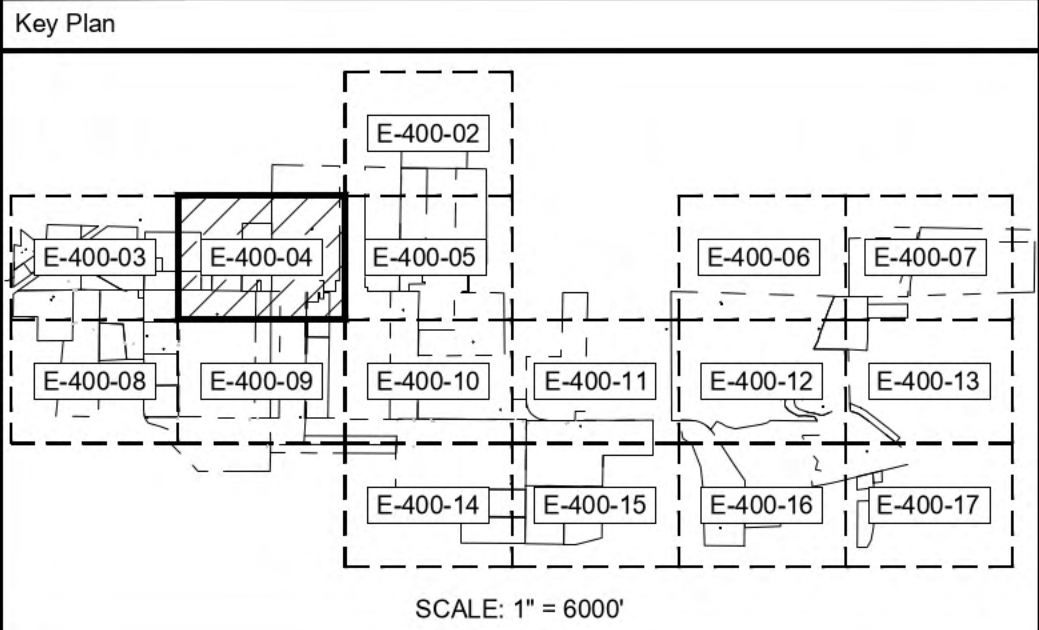
PRELIMINARY NOT FOR CONSTRUCTION REPLACE WITH ENGINEERS STAMP AT CONSTRUCTION AND/OR FABRICATION	Designed	BG	Eng check	JS
	Drawn	JLL	Approved	JAB
	Dwg check		Project Mngr	RA
	Scale at ANSI D		Date	Rev
	1" = 200'		07/23/2021	F
Drawing Number		SRS-E-400-03		

© Mott MacDonald
It is a violation of New York state Education Law for any person, unless acting under the direction of a licensed engineer to alter this document in any way.
This document is issued for the party which commissioned it and for specific purposes connected with the captioned project only. It should not be relied upon by any other party or used for any other purpose.
We accept no responsibility for the consequences of this document being relied upon by any other party, or being used for any other purpose, or containing any error or omission which is due to an error or omission in data supplied to us by other parties.

CONCEPTUAL - NOT FOR CONSTRUCTION



Legend			
	TAX PARCEL BOUNDARY		1 MVA STEP-UP XFMR
	FENCE		2 MVA STEP-UP XFMR
	GRAVEL ROAD		3 MVA STEP-UP XFMR
	NYSDEC WETLANDS		JUNCTION BOX
	FEDERAL WETLANDS		BORING AREAS
	STREAMS		PAD MOUNTED SWITCHGEAR
	SETBACK		PCS ID
	NYSDEC SETBACK		CONDUIT ID
	GAS LINE		
	34.5KV AERIAL LINE		
	STRUCTURE & ID		
	PERMANENT EASEMENT FOR AERIAL LINE		
	AERIAL		
	IN CONDUIT		
	IN TRENCH		
			FEEDER 1 CABLES
			FEEDER 2 CABLES
			FEEDER 3 CABLES
			FEEDER 4 CABLES
			34.5KV BESS CABLES



F	07/23/2021	JLL	ISSUED FOR 94-C	JS	JAB
E	07/14/2021	JLL	ISSUED FOR REVIEW	JS	JAB
D	06/18/2021	JLL	ISSUED FOR REVIEW	DD	JAB
C	06/04/2021	JLL	ISSUED FOR REVIEW	DD	JAB
B	05/21/2021	JLL	ISSUED FOR REVIEW	DD	JAB
Rev	Date	Drawn	Description	Ch'k'd	App'd

M
MOTT
MACDONALD

101 Station Drive
Suite 130
Westwood, MA 02090
United States
T +1 (781) 915-0015
F +1 (781) 915-0001
W www.mottmac.com

Client

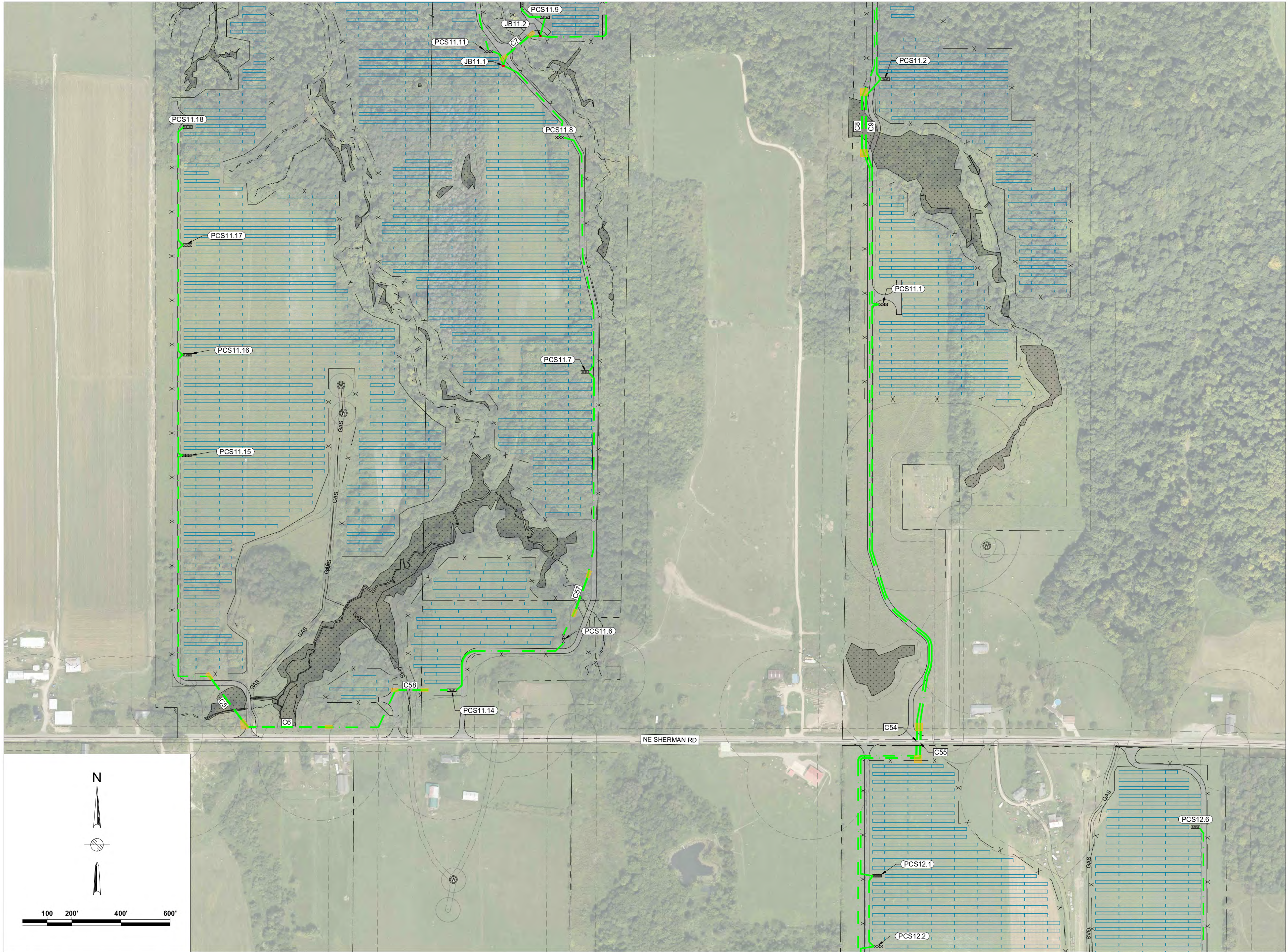
Title

**SOUTH RIPLEY SOLAR
ELECTRICAL SOLAR
ARRAY PARCEL DETAIL 3**

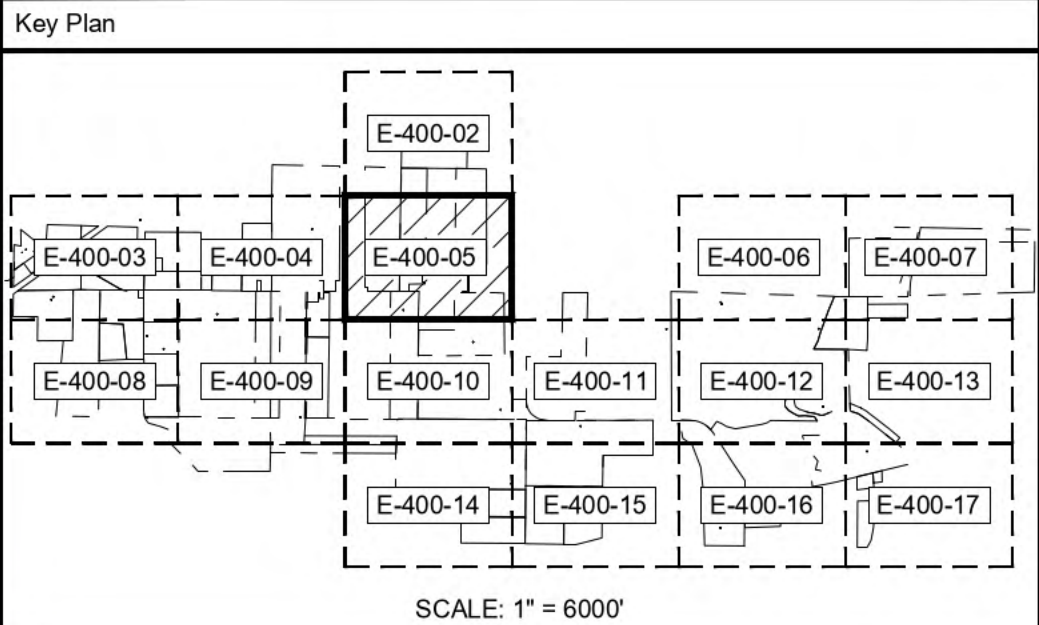
PRELIMINARY NOT FOR CONSTRUCTION REPLACE WITH ENGINEERS STAMP AT CONSTRUCTION AND/OR FABRICATION	Designed	BG	Eng check	JS
	Drawn	JLL	Approved	JAB
	Dwg check		Project Mngr	RA
	Scale at ANSI D		Date	Rev
	1" = 200'		07/23/2021	F
Drawing Number		SRS-E-400-04		

© Mott MacDonald
It is a violation of New York state Education Law for any person, unless acting under the direction of a licensed engineer to alter this document in any way.
This document is issued for the party which commissioned it and for specific purposes connected with the captioned project only. It should not be relied upon by any other party or used for any other purpose.
We accept no responsibility for the consequences of this document being relied upon by any other party, or being used for any other purpose, or containing any error or omission which is due to an error or omission in data supplied to us by other parties.

CONCEPTUAL - NOT FOR CONSTRUCTION



Legend			
	TAX PARCEL BOUNDARY		1 MVA STEP-UP XFMR
	FENCE		2 MVA STEP-UP XFMR
	GRAVEL ROAD		3 MVA STEP-UP XFMR
	NYSDEC WETLANDS		JUNCTION BOX
	FEDERAL WETLANDS		BORING AREAS
	STREAMS		PAD MOUNTED SWITCHGEAR
	SETBACK		PCS ID
	NYSDEC SETBACK		CONDUIT ID
	GAS		
	34.5KV AERIAL LINE		
	STRUCTURE & ID		
	PERMANENT EASEMENT FOR AERIAL LINE		
<div><div>AERIAL</div><div>IN CONDUIT</div><div>IN TRENCH</div></div>			
			FEEDER 1 CABLES
			FEEDER 2 CABLES
			FEEDER 3 CABLES
			FEEDER 4 CABLES
			34.5KV BESS CABLES



F	07/23/2021	JLL	ISSUED FOR 94-C	JS	JAB
E	07/14/2021	JLL	ISSUED FOR REVIEW	JS	JAB
D	06/18/2021	JLL	ISSUED FOR REVIEW	DD	JAB
C	06/04/2021	JLL	ISSUED FOR REVIEW	DD	JAB
B	05/21/2021	JLL	ISSUED FOR REVIEW	DD	JAB
Rev	Date	Drawn	Description	Ch'k'd	App'd

M
MOTT
MACDONALD

101 Station Drive
Suite 130
Westwood, MA 02090
United States
T +1 (781) 915-0015
F +1 (781) 915-0001
W www.mottmac.com

Client

Title

**SOUTH RIPLEY SOLAR
ELECTRICAL SOLAR
ARRAY PARCEL DETAIL 4**

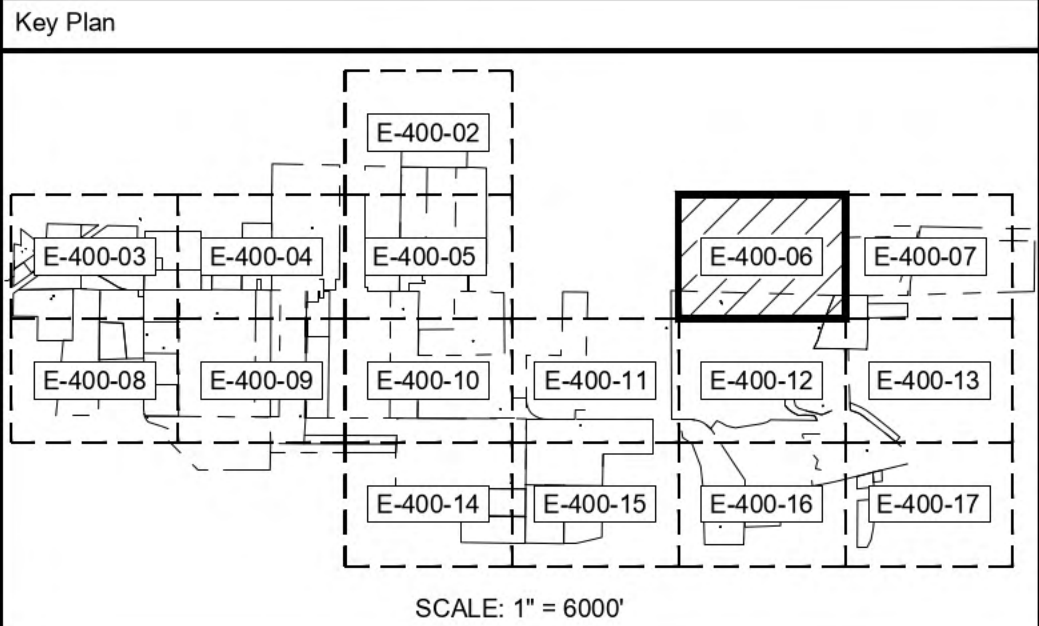
PRELIMINARY NOT FOR CONSTRUCTION REPLACE WITH ENGINEERS STAMP AT CONSTRUCTION AND/OR FABRICATION	Designed	BG	Eng check	JS
	Drawn	JLL	Approved	JAB
	Dwg check		Project Mngr	RA
	Scale at ANSI D		Date	Rev
	1" = 200'		07/23/2021	F
Drawing Number		SRS-E-400-05		

CONCEPTUAL - NOT FOR CONSTRUCTION

© Mott MacDonald
It is a violation of New York state Education Law for any person, unless acting under the direction of a licensed engineer to alter this document in any way.
This document is issued for the party which commissioned it and for specific purposes connected with the captioned project only. It should not be relied upon by any other party or used for any other purpose.
We accept no responsibility for the consequences of this document being relied upon by any other party, or being used for any other purpose, or containing any error or omission which is due to an error or omission in data supplied to us by other parties.



Legend			
	TAX PARCEL BOUNDARY		1 MVA STEP-UP XFMR
	FENCE		2 MVA STEP-UP XFMR
	GRAVEL ROAD		3 MVA STEP-UP XFMR
	NYSDEC WETLANDS		JUNCTION BOX
	FEDERAL WETLANDS		BORING AREAS
	STREAMS		PAD MOUNTED SWITCHGEAR
	SETBACK		PCS ID
	NYSDEC SETBACK		CONDUIT ID
	GAS		34.5KV AERIAL LINE
	GAS LINE		STRUCTURE & ID
	34.5KV AERIAL LINE		PERMANENT EASEMENT FOR AERIAL LINE
	STRUCTURE & ID		
	PERMANENT EASEMENT FOR AERIAL LINE		
	AERIAL		IN CONDUIT
	IN CONDUIT		IN TRENCH
	FEEDER 1 CABLES		FEEDER 2 CABLES
	FEEDER 3 CABLES		FEEDER 4 CABLES
	34.5KV BESS CABLES		



F	07/23/2021	JLL	ISSUED FOR 94-C	JS	JAB
E	07/14/2021	JLL	ISSUED FOR REVIEW	JS	JAB
D	06/18/2021	JLL	ISSUED FOR REVIEW	DD	JAB
C	06/04/2021	JLL	ISSUED FOR REVIEW	DD	JAB
B	05/21/2021	JLL	ISSUED FOR REVIEW	DD	JAB
Rev	Date	Drawn	Description	Ch'k'd	App'd

MOTT MACDONALD

101 Station Drive
Suite 130
Westwood, MA 02090
United States
T +1 (781) 915-0015
F +1 (781) 915-0001
W www.mottmac.com

Client

South Ripley
SOLAR PROJECT

Title

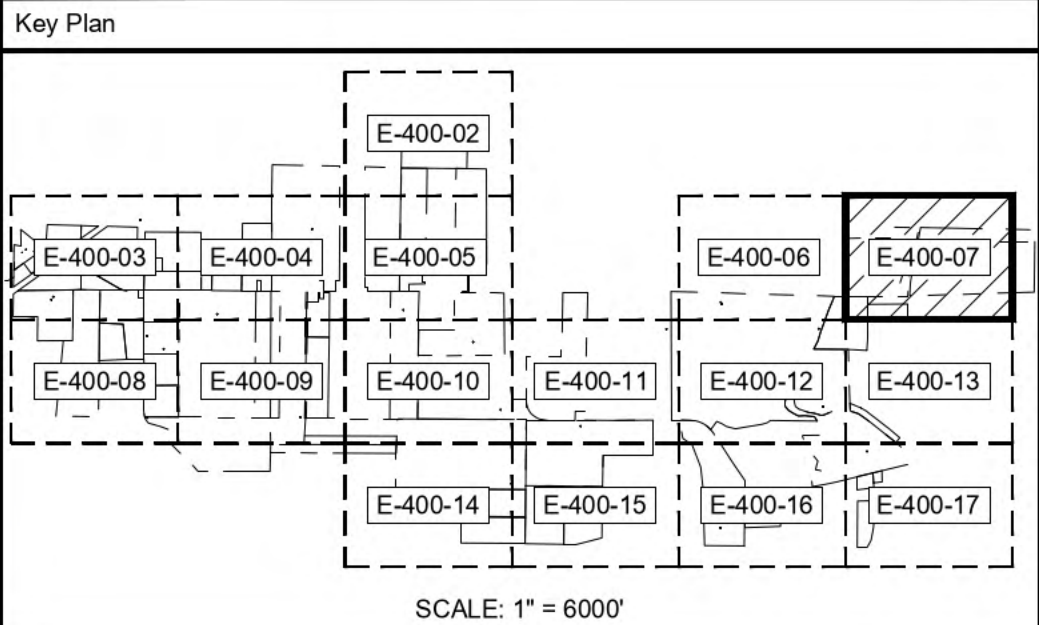
**SOUTH RIPLEY SOLAR
ELECTRICAL SOLAR
ARRAY PARCEL DETAIL 5**

PRELIMINARY NOT FOR CONSTRUCTION REPLACE WITH ENGINEERS STAMP AT CONSTRUCTION AND/OR FABRICATION	Designed	BG	Eng check	JS
	Drawn	JLL	Approved	JAB
	Dwg check		Project Mngr	RA
	Scale at ANSI D		Date	Rev
		1" = 200'	07/23/2021	F
Drawing Number		SRS-E-400-06		

CONCEPTUAL - NOT FOR CONSTRUCTION



Legend		
	TAX PARCEL BOUNDARY	1 MVA STEP-UP XFMR
	FENCE	2 MVA STEP-UP XFMR
	GRAVEL ROAD	3 MVA STEP-UP XFMR
	NYSDEC WETLANDS	JUNCTION BOX
	FEDERAL WETLANDS	BORING AREAS
	STREAMS	PAD MOUNTED SWITCHGEAR
	SETBACK	PCS ID
	NYSDEC SETBACK	CONDUIT ID
	GAS	
	GAS LINE	
	34.5KV AERIAL LINE	
	STRUCTURE & ID	
	PERMANENT EASEMENT FOR AERIAL LINE	
	AERIAL	
	IN CONDUIT	
	IN TRENCH	
	FEEDER 1 CABLES	
	FEEDER 2 CABLES	
	FEEDER 3 CABLES	
	FEEDER 4 CABLES	
	34.5KV BESS CABLES	



F	07/23/2021	JLL	ISSUED FOR 94-C	JS	JAB
E	07/14/2021	JLL	ISSUED FOR REVIEW	JS	JAB
D	06/18/2021	JLL	ISSUED FOR REVIEW	DD	JAB
C	06/04/2021	JLL	ISSUED FOR REVIEW	DD	JAB
B	05/18/2021	JLL	ISSUED FOR REVIEW	DD	JAB
Rev	Date	Drawn	Description	Ch'k'd	App'd

M
MOTT
MACDONALD

101 Station Drive
Suite 130
Westwood, MA 02090
United States
T +1 (781) 915-0015
F +1 (781) 915-0001
W www.mottmac.com

Client

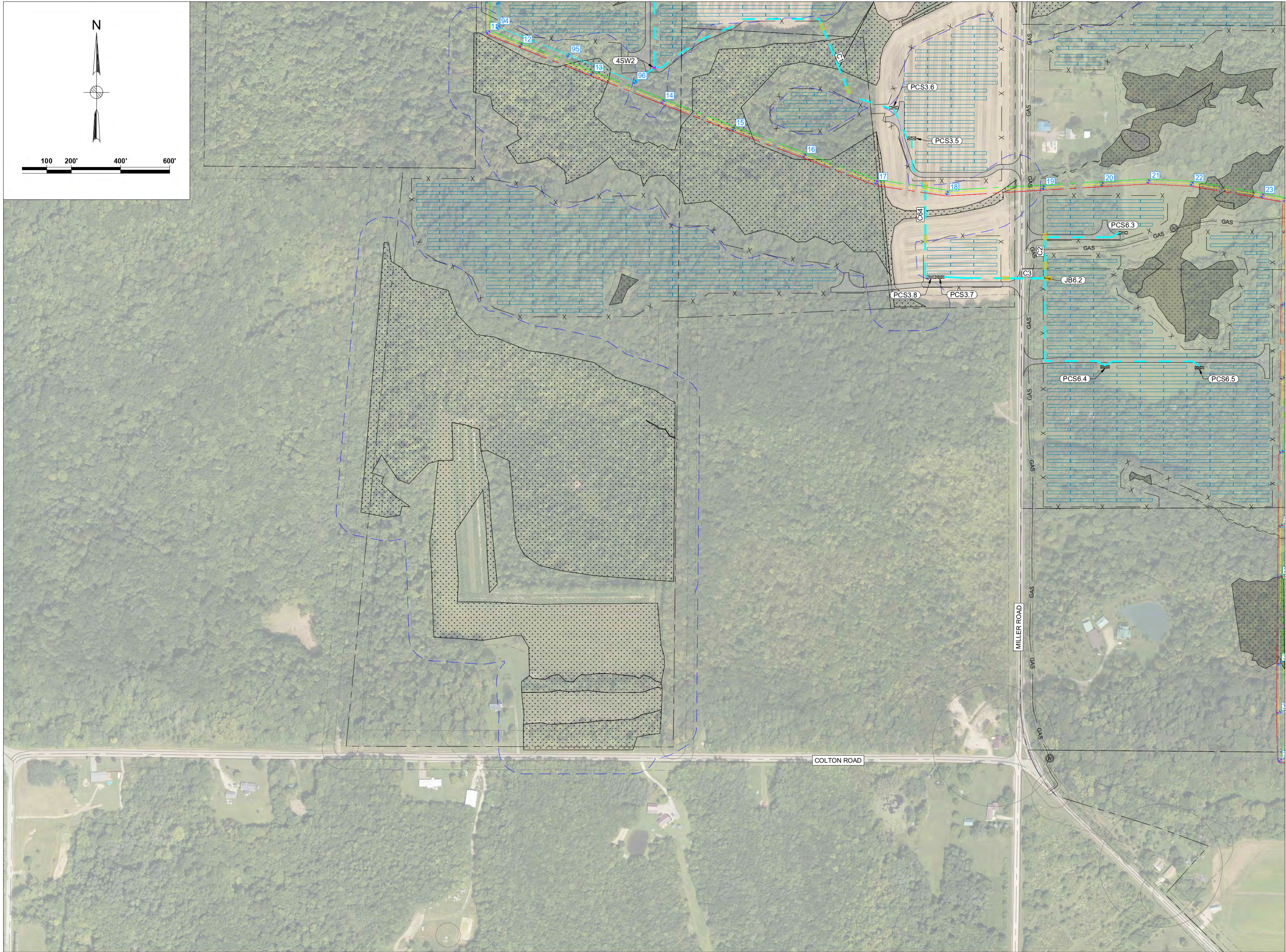
Title

**SOUTH RIPLEY SOLAR
ELECTRICAL SOLAR
ARRAY PARCEL DETAIL 6**

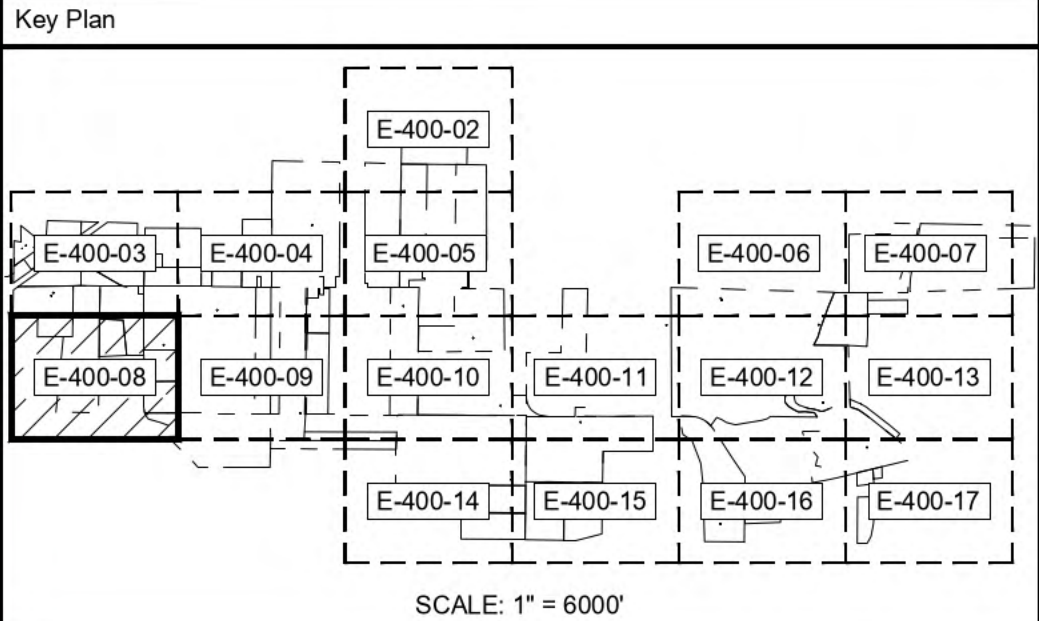
PRELIMINARY NOT FOR CONSTRUCTION REPLACE WITH ENGINEERS STAMP AT CONSTRUCTION AND/OR FABRICATION	Designed	BG	Eng check	JS
	Drawn	JLL	Approved	JAB
	Dwg check		Project Mngr	RA
	Scale at ANSI D		Date	Rev
	1" = 200'		07/23/2021	F
Drawing Number		SRS-E-400-07		

© Mott MacDonald
It is a violation of New York state Education Law for any person, unless acting under the direction of a licensed engineer to alter this document in any way.
This document is issued for the party which commissioned it and for specific purposes connected with the captioned project only. It should not be relied upon by any other party or used for any other purpose.
We accept no responsibility for the consequences of this document being relied upon by any other party, or being used for any other purpose, or containing any error or omission which is due to an error or omission in data supplied to us by other parties.

CONCEPTUAL - NOT FOR CONSTRUCTION



Legend			
	TAX PARCEL BOUNDARY		1 MVA STEP-UP XFMR
	FENCE		2 MVA STEP-UP XFMR
	GRAVEL ROAD		3 MVA STEP-UP XFMR
	NYSDEC WETLANDS		JUNCTION BOX
	FEDERAL WETLANDS		BORING AREAS
	STREAMS		PAD MOUNTED SWITCHGEAR
	SETBACK		PCS ID
	NYSDEC SETBACK		CONDUIT ID
	GAS		
	34.5KV AERIAL LINE		
	STRUCTURE & ID		
	PERMANENT EASEMENT FOR AERIAL LINE		
	AERIAL		IN CONDUIT
			IN TRENCH
			FEEDER 1 CABLES
			FEEDER 2 CABLES
			FEEDER 3 CABLES
			FEEDER 4 CABLES
			34.5KV BESS CABLES



F	07/23/2021	JLL	ISSUED FOR 94-C	JS	JAB
E	07/14/2021	JLL	ISSUED FOR REVIEW	JS	JAB
D	06/18/2021	JLL	ISSUED FOR REVIEW	DD	JAB
C	06/04/2021	JLL	ISSUED FOR REVIEW	DD	JAB
B	05/18/2021	JLL	ISSUED FOR REVIEW	DD	JAB
Rev	Date	Drawn	Description	Ch'k'd	App'd

M

M

MOTT
MACDONALD

101 Station Drive
Suite 130
Westwood, MA 02090
United States
T +1 (781) 915-0015
F +1 (781) 915-0001
W www.mottmac.com

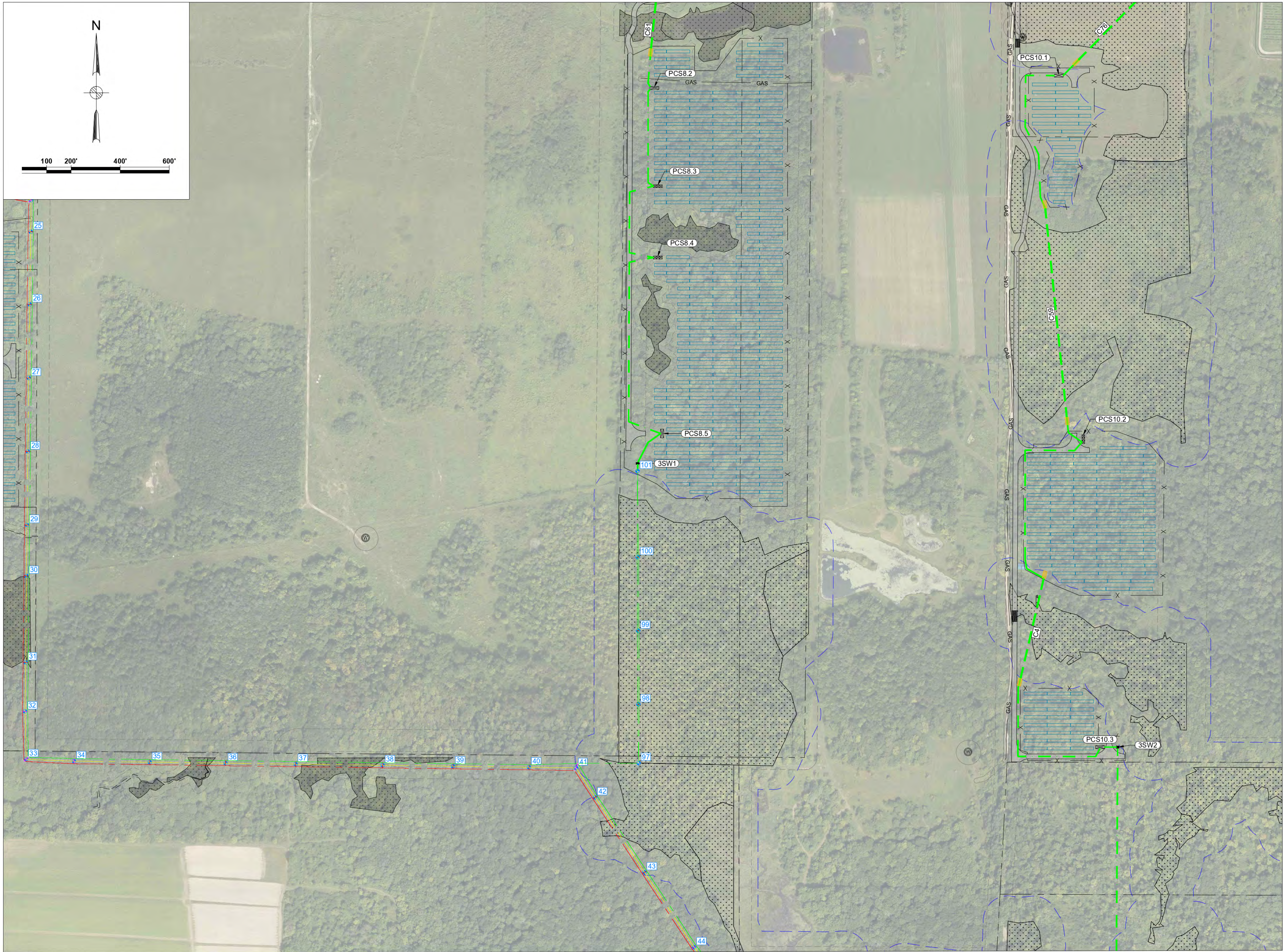
Client

Title

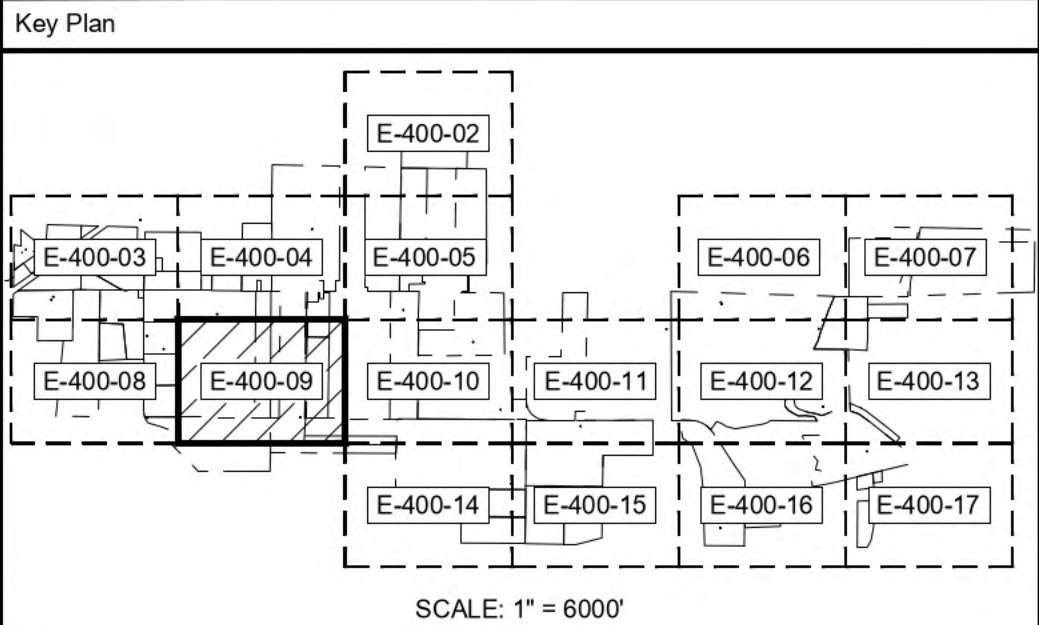
SOUTH RIPLEY SOLAR
ELECTRICAL SOLAR
ARRAY PARCEL DETAIL 7

PRELIMINARY NOT FOR CONSTRUCTION REPLACE WITH ENGINEERS STAMP AT CONSTRUCTION AND/OR FABRICATION	Designed	BG	Eng check	JS
	Drawn	JLL	Approved	JAB
	Dwg check		Project Mngr	RA
	Scale at ANSI D		Date	Rev
			07/23/2021	F
Drawing Number		SRS-E-400-08		

CONCEPTUAL - NOT FOR CONSTRUCTION



Legend			
	TAX PARCEL BOUNDARY		1 MVA STEP-UP XFMR
	FENCE		2 MVA STEP-UP XFMR
	GRAVEL ROAD		3 MVA STEP-UP XFMR
	NYSDEC WETLANDS		JUNCTION BOX
	FEDERAL WETLANDS		BORING AREAS
	STREAMS		PAD MOUNTED SWITCHGEAR
	SETBACK		PCS ID
	NYSDEC SETBACK		CONDUIT ID
	GAS		
	GAS LINE		
	34.5KV AERIAL LINE		
	STRUCTURE & ID		
	PERMANENT EASEMENT FOR AERIAL LINE		
	AERIAL		IN CONDUIT
			IN TRENCH



F	07/23/2021	JLL	ISSUED FOR 94-C	JS	JAB
E	07/14/2021	JLL	ISSUED FOR REVIEW	JS	JAB
D	06/18/2021	JLL	ISSUED FOR REVIEW	DD	JAB
C	06/04/2021	JLL	ISSUED FOR REVIEW	DD	JAB
B	05/21/2021	JLL	ISSUED FOR REVIEW	DD	JAB
Rev	Date	Drawn	Description	Ch'k'd	App'd

M
MOTT
MACDONALD

101 Station Drive
Suite 130
Westwood, MA 02090
United States
T +1 (781) 915-0015
F +1 (781) 915-0001
W www.mottmac.com

Client



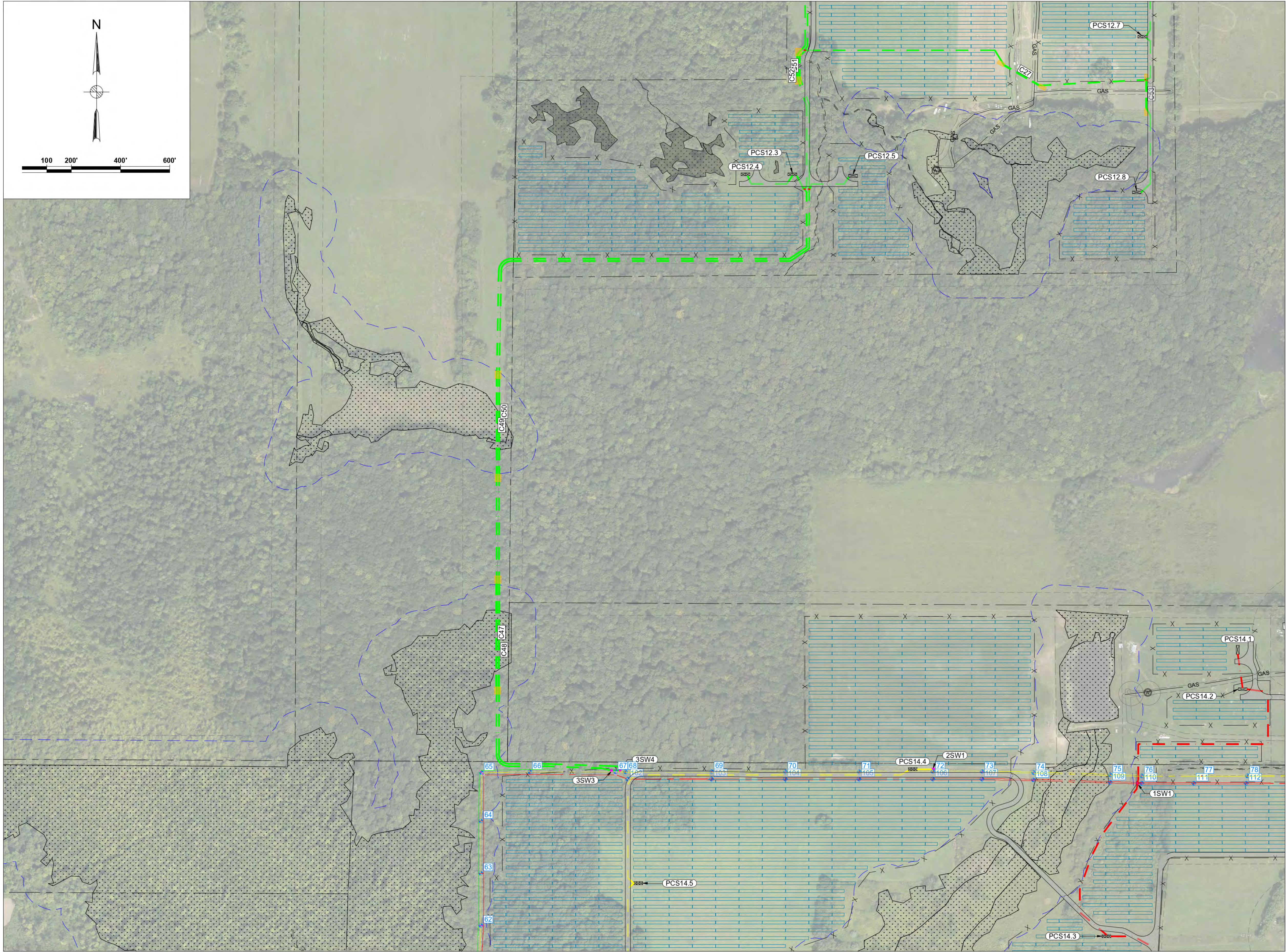
Title
SOUTH RIPLEY SOLAR
ELECTRICAL SOLAR
ARRAY PARCEL DETAIL 8

PRELIMINARY
NOT FOR
CONSTRUCTION
REPLACE WITH
ENGINEERS STAMP
AT CONSTRUCTION
AND/OR
FABRICATION

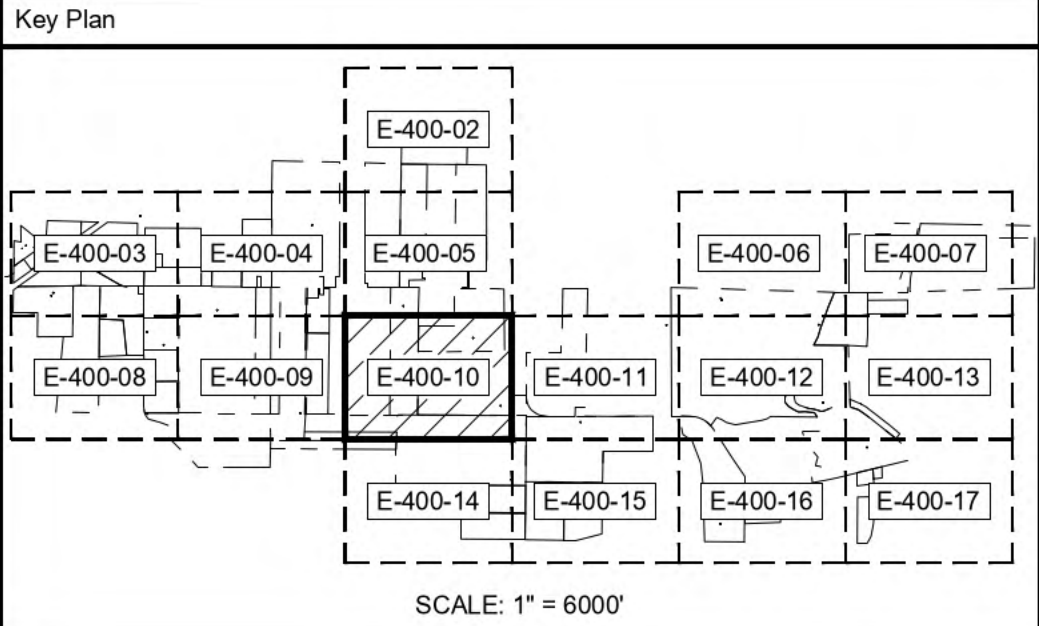
Designed	BG	Eng check	JS
Drawn	JLL	Approved	JAB
Dwg check		Project Mngr	RA
Scale at ANSI D		Date	Rev
1" = 200'		07/23/2021	F
Drawing Number	SRS-E-400-09		

CONCEPTUAL - NOT FOR CONSTRUCTION

© Mott MacDonald
It is a violation of New York state Education Law for any person, unless acting under the direction of a licensed engineer to alter this document in any way.
This document is issued for the party which commissioned it and for specific purposes connected with the captioned project only. It should not be relied upon by any other party or used for any other purpose.
We accept no responsibility for the consequences of this document being relied upon by any other party, or being used for any other purpose, or containing any error or omission which is due to an error or omission in data supplied to us by other parties.



Legend			
	TAX PARCEL BOUNDARY		1 MVA STEP-UP XFMR
	FENCE		2 MVA STEP-UP XFMR
	GRAVEL ROAD		3 MVA STEP-UP XFMR
	NYSDEC WETLANDS		JUNCTION BOX
	FEDERAL WETLANDS		BORING AREAS
	STREAMS		PAD MOUNTED SWITCHGEAR
	SETBACK		PCS ID
	NYSDEC SETBACK		CONDUIT ID
	GAS		
	GAS LINE		
	34.5KV AERIAL LINE		
	STRUCTURE & ID		
	PERMANENT EASEMENT FOR AERIAL LINE		
<u>AERIAL</u>	<u>IN CONDUIT</u>	<u>IN TRENCH</u>	
			FEEDER 1 CABLES
			FEEDER 2 CABLES
			FEEDER 3 CABLES
			FEEDER 4 CABLES
			34.5KV BESS CABLES



F	07/23/2021	JLL	ISSUED FOR 94-C	JS	JAB
E	07/14/2021	JLL	ISSUED FOR REVIEW	JS	JAB
D	06/18/2021	JLL	ISSUED FOR REVIEW	DD	JAB
C	06/04/2021	JLL	ISSUED FOR REVIEW	DD	JAB
B	05/21/2021	JLL	ISSUED FOR REVIEW	DD	JAB
Rev	Date	Drawn	Description	Ch'k'd	App'd

M
MOTT
MACDONALD

101 Station Drive
Suite 130
Westwood, MA 02090
United States
T +1 (781) 915-0015
F +1 (781) 915-0001
W www.mottmac.com

Client

Title

**SOUTH RIPLEY SOLAR
ELECTRICAL SOLAR
ARRAY PARCEL DETAIL 9**

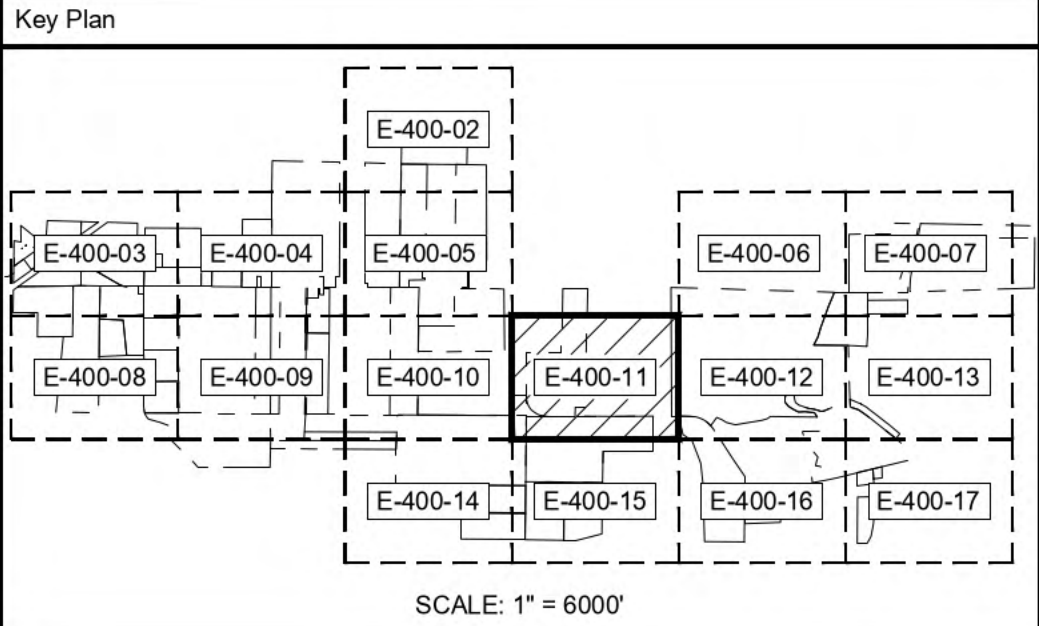
PRELIMINARY NOT FOR CONSTRUCTION REPLACE WITH ENGINEERS STAMP AT CONSTRUCTION AND/OR FABRICATION	Designed	BG	Eng check	JS
	Drawn	JLL	Approved	JAB
	Dwg check		Project Mngr	RA
	Scale at ANSI D		Date	Rev
	1" = 200'		07/23/2021	F
Drawing Number		SRS-E-400-10		

© Mott MacDonald
It is a violation of New York state Education Law for any person, unless acting under the direction of a licensed engineer to alter this document in any way.
This document is issued for the party which commissioned it and for specific purposes connected with the captioned project only. It should not be relied upon by any other party or used for any other purpose.
We accept no responsibility for the consequences of this document being relied upon by any other party, or being used for any other purpose, or containing any error or omission which is due to an error or omission in data supplied to us by other parties.

CONCEPTUAL - NOT FOR CONSTRUCTION



Legend			
	TAX PARCEL BOUNDARY		1 MVA STEP-UP XFMR
	FENCE		2 MVA STEP-UP XFMR
	GRAVEL ROAD		3 MVA STEP-UP XFMR
	NYSDEC WETLANDS		JUNCTION BOX
	FEDERAL WETLANDS		BORING AREAS
	STREAMS		PAD MOUNTED SWITCHGEAR
	SETBACK		PCS ID
	NYSDEC SETBACK		CONDUIT ID
	GAS		
	34.5KV AERIAL LINE		
	STRUCTURE & ID		
	PERMANENT EASEMENT FOR AERIAL LINE		
	AERIAL		IN CONDUIT
			IN TRENCH



F	07/23/2021	JLL	ISSUED FOR 94-C	JS	JAB
E	07/14/2021	JLL	ISSUED FOR REVIEW	JS	JAB
D	06/18/2021	JLL	ISSUED FOR REVIEW	DD	JAB
C	06/04/2021	JLL	ISSUED FOR REVIEW	DD	JAB
B	05/21/2021	JLL	ISSUED FOR REVIEW	DD	JAB
Rev	Date	Drawn	Description	Ch'kd	App'd

M
MOTT
MACDONALD

101 Station Drive
Suite 130
Westwood, MA 02090
United States
T +1 (781) 915-0015
F +1 (781) 915-0001
W www.mottmac.com

Client

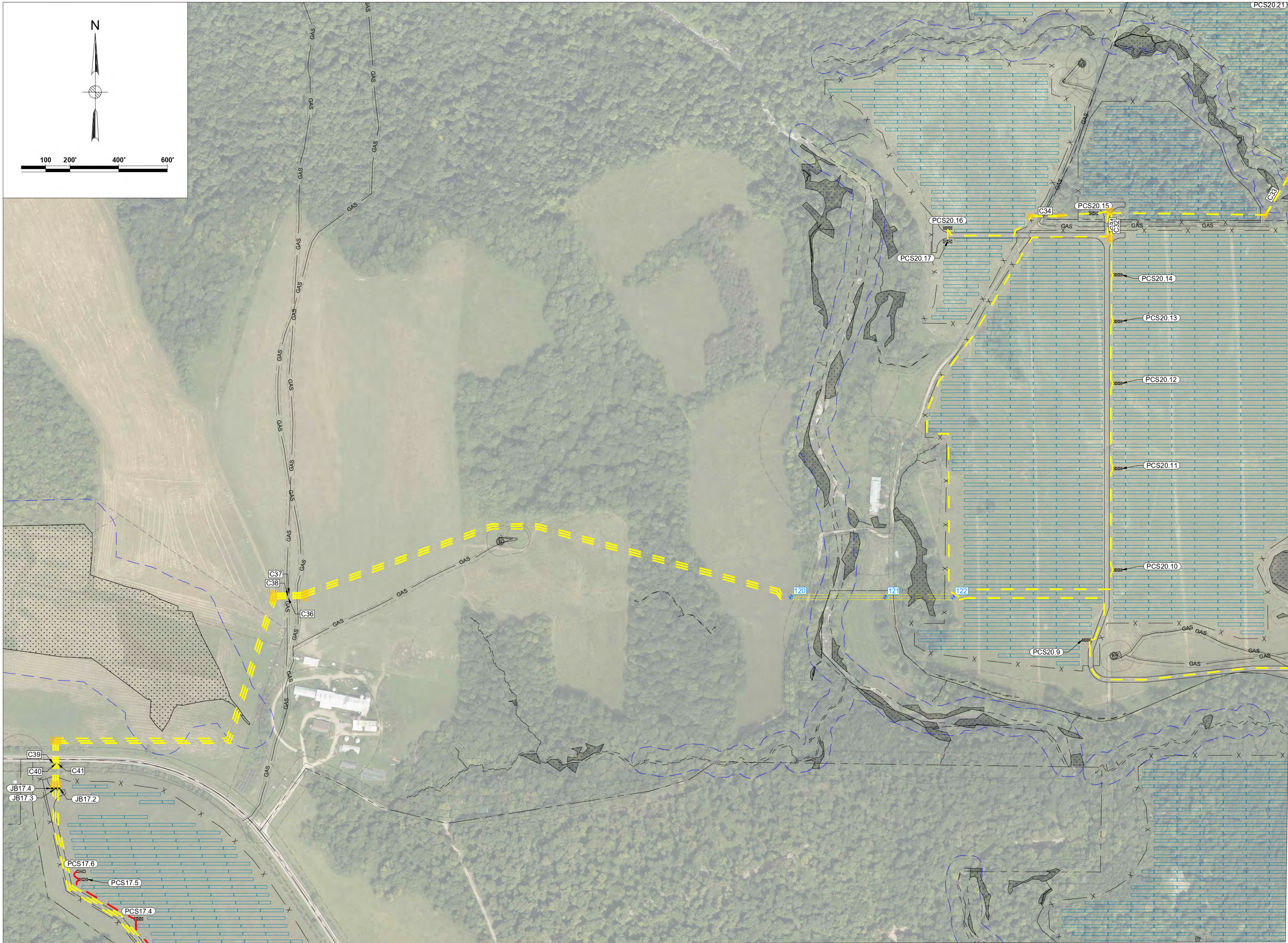
Title

**SOUTH RIPLEY SOLAR
ELECTRICAL SOLAR
ARRAY PARCEL DETAIL 11**

PRELIMINARY NOT FOR CONSTRUCTION REPLACE WITH ENGINEERS STAMP AT CONSTRUCTION AND/OR FABRICATION	Designed	BG	Eng check	JS
	Drawn	JLL	Approved	JAB
	Dwg check		Project Mngr	RA
	Scale at ANSI D 1" = 200'		Date	Rev
	Drawing Number		07/23/2021	F
SRS-E-400-11				

© Mott MacDonald
It is a violation of New York state Education Law for any person, unless acting under the direction of a licensed engineer to alter this document in any way.
This document is issued for the party which commissioned it and for specific purposes connected with the captioned project only. It should not be relied upon by any other party or used for any other purpose.
We accept no responsibility for the consequences of this document being relied upon by any other party, or being used for any other purpose, or containing any error or omission which is due to an error or omission in data supplied to us by other parties.

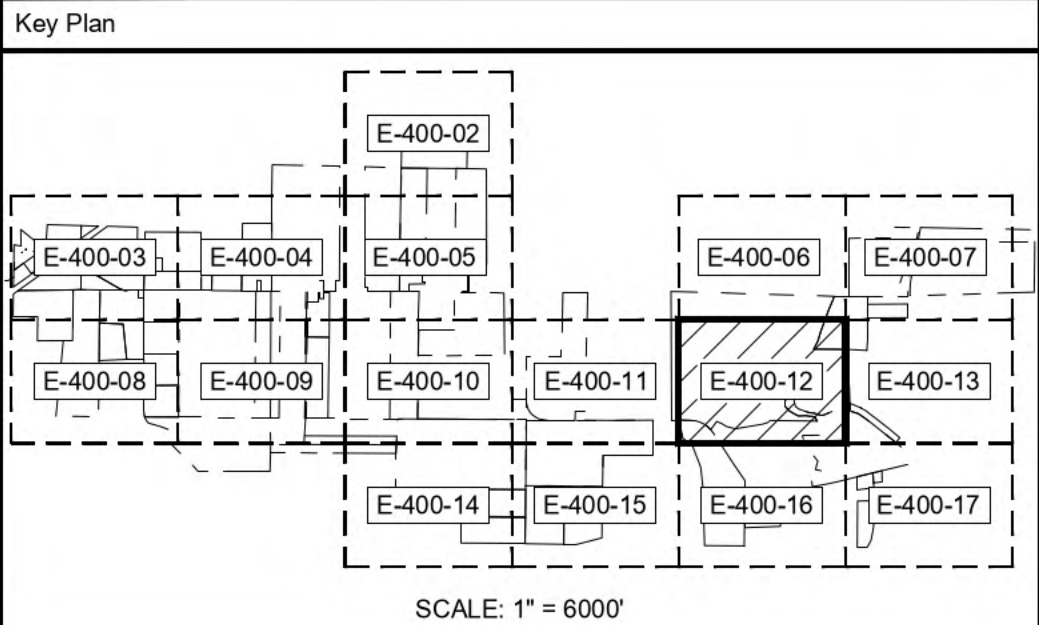
CONCEPTUAL - NOT FOR CONSTRUCTION



Legend

---	TAX PARCEL BOUNDARY	⊠	1 MVA STEP-UP XFMR
-X-	FENCE	⊠	2 MVA STEP-UP XFMR
---	GRAVEL ROAD	⊠	3 MVA STEP-UP XFMR
---	NYSDEC WETLANDS	■	JUNCTION BOX
---	FEDERAL WETLANDS	■	BORING AREAS
---	STREAMS	■	PAD MOUNTED SWITCHGEAR
---	SETBACK	(PCSXX.XX)	PCS ID
---	NYSDEC SETBACK	(CXX)	CONDUIT ID
---	GAS		
---	34.5KV AERIAL LINE		
---	STRUCTURE & ID		
---	PERMANENT EASEMENT FOR AERIAL LINE		

AERIAL	IN CONDUIT	IN TRENCH	FEEDER 1 CABLES
---	---	---	---
---	---	---	---
---	---	---	---
---	---	---	---
---	---	---	---



F	07/23/2021	JLL	ISSUED FOR 94-C	JS	JAB
E	07/14/2021	JLL	ISSUED FOR REVIEW	JS	JAB
D	06/18/2021	JLL	ISSUED FOR REVIEW	DD	JAB
C	06/04/2021	JLL	ISSUED FOR REVIEW	DD	JAB
B	05/21/2021	JLL	ISSUED FOR REVIEW	DD	JAB
Rev	Date	Drawn	Description	Ch'k'd	App'd

M

M

MACDONALD

101 Station Drive
Suite 130
Westwood, MA 02090
United States
T +1 (781) 915-0015
F +1 (781) 915-0001
W www.mottmac.com

Client

G

South Ripley

SOLAR PROJECT

Title

SOUTH RIPLEY SOLAR
ELECTRICAL SOLAR
ARRAY PARCEL DETAIL 11

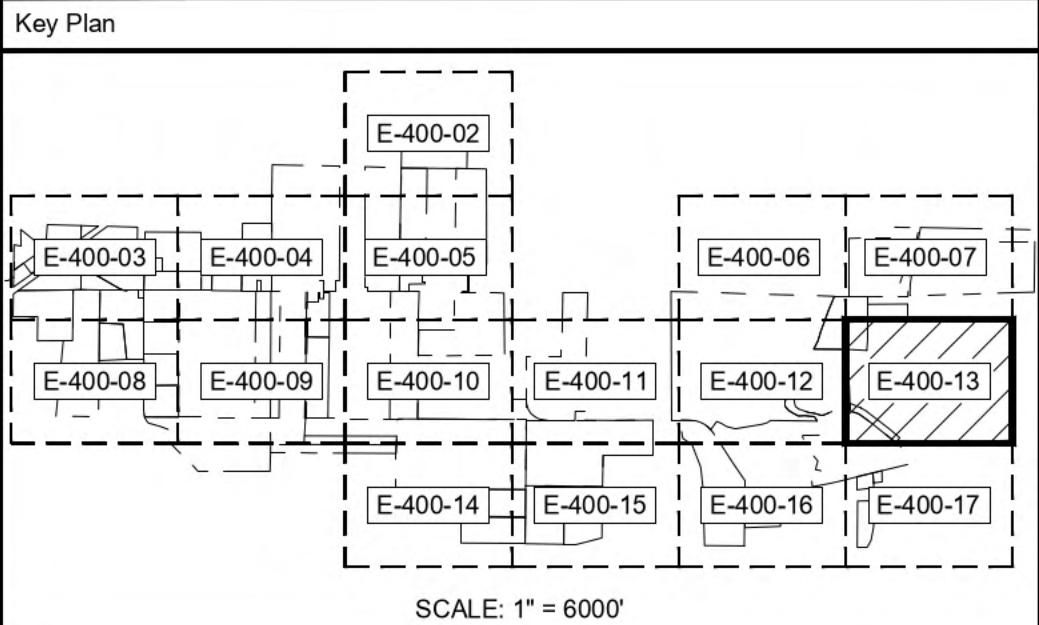
PRELIMINARY NOT FOR CONSTRUCTION REPLACE WITH ENGINEERS STAMP AT CONSTRUCTION AND/OR FABRICATION	Designed	BG	Eng check	JS
	Drawn	JLL	Approved	JAB
	Dwg check		Project Mngr	RA
	Scale at ANSI D 1" = 200'	Date	07/23/2021	Rev F
	Drawing Number	SRS-E-400-12		

© Mott MacDonald
It is a violation of New York state Education Law for any person, unless acting under the direction of a licensed engineer to alter this document in any way.
This document is issued for the party which commissioned it and for specific purposes connected with the captioned project only. It should not be relied upon by any other party or used for any other purpose.
We accept no responsibility for the consequences of this document being relied upon by any other party, or being used for any other purpose, or containing any error or omission which is due to an error or omission in data supplied to us by other parties.

CONCEPTUAL - NOT FOR CONSTRUCTION



Legend			
	TAX PARCEL BOUNDARY		1 MVA STEP-UP XFMR
	FENCE		2 MVA STEP-UP XFMR
	GRAVEL ROAD		3 MVA STEP-UP XFMR
	NYSDEC WETLANDS		JUNCTION BOX
	FEDERAL WETLANDS		BORING AREAS
	STREAMS		PAD MOUNTED SWITCHGEAR
	SETBACK		PCS ID
	NYSDEC SETBACK		CONDUIT ID
	GAS		
	GAS LINE		
	34.5KV AERIAL LINE		
	STRUCTURE & ID		
	PERMANENT EASEMENT FOR AERIAL LINE		
	AERIAL		IN CONDUIT
			IN TRENCH



F	07/23/2021	JLL	ISSUED FOR 94-C	JS	JAB
E	07/14/2021	JLL	ISSUED FOR REVIEW	JS	JAB
D	06/18/2021	JLL	ISSUED FOR REVIEW	DD	JAB
C	06/04/2021	JLL	ISSUED FOR REVIEW	DD	JAB
B	05/21/2021	JLL	ISSUED FOR REVIEW	DD	JAB
Rev	Date	Drawn	Description	Ch'k'd	App'd

101 Station Drive
Suite 130
Westwood, MA 02090
United States
T +1 (781) 915-0015
F +1 (781) 915-0001
W www.mottmac.com

Client

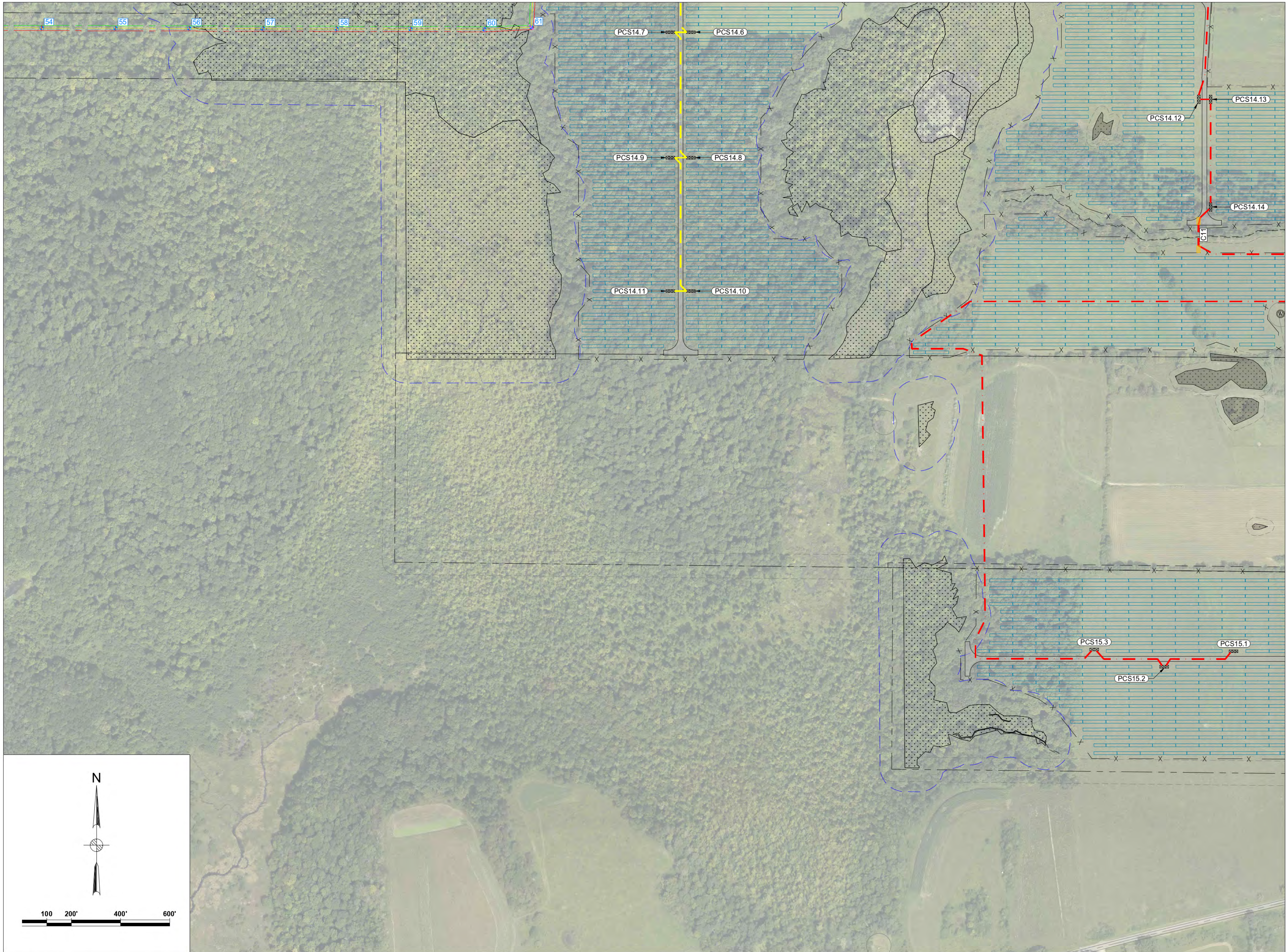
Title

SOUTH RIPLEY SOLAR
ELECTRICAL SOLAR
ARRAY PARCEL DETAIL 12

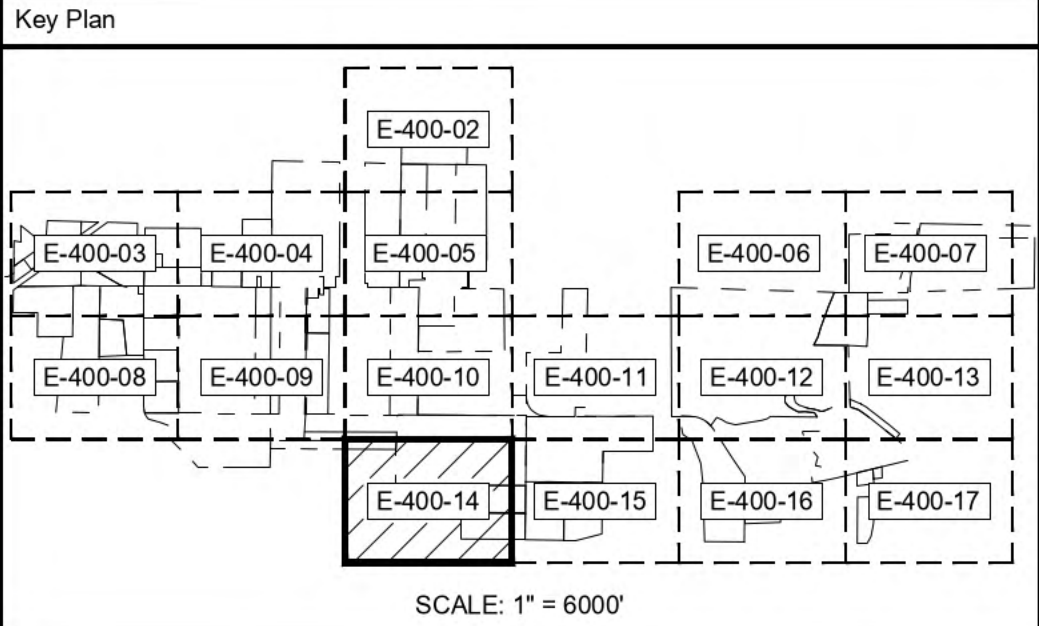
PRELIMINARY NOT FOR CONSTRUCTION REPLACE WITH ENGINEERS STAMP AT CONSTRUCTION AND/OR FABRICATION	Designed	BG	Eng check	JS
	Drawn	JLL	Approved	JAB
	Dwg check		Project Mngr	RA
	Scale at ANSI D		Date	Rev
	1" = 200'		07/23/2021	F
Drawing Number		SRS-E-400-13		

© Mott MacDonald
It is a violation of New York state Education Law for any person, unless acting under the direction of a licensed engineer to alter this document in any way.
This document is issued for the party which commissioned it and for specific purposes connected with the captioned project only. It should not be relied upon by any other party or used for any other purpose.
We accept no responsibility for the consequences of this document being relied upon by any other party, or being used for any other purpose, or containing any error or omission which is due to an error or omission in data supplied to us by other parties.

CONCEPTUAL - NOT FOR CONSTRUCTION



Legend			
	TAX PARCEL BOUNDARY		1 MVA STEP-UP XFMR
	FENCE		2 MVA STEP-UP XFMR
	GRAVEL ROAD		3 MVA STEP-UP XFMR
	NYSDEC WETLANDS		JUNCTION BOX
	FEDERAL WETLANDS		BORING AREAS
	STREAMS		PAD MOUNTED SWITCHGEAR
	SETBACK		PCS ID
	NYSDEC SETBACK		CONDUIT ID
	GAS		
	34.5KV AERIAL LINE		
	STRUCTURE & ID		
	PERMANENT EASEMENT FOR AERIAL LINE		
	AERIAL		FEEDER 1 CABLES
	IN CONDUIT		FEEDER 2 CABLES
			FEEDER 3 CABLES
			FEEDER 4 CABLES
			34.5KV BESS CABLES



F	07/23/2021	JLL	ISSUED FOR 94-C	JS	JAB
E	07/14/2021	JLL	ISSUED FOR REVIEW	JS	JAB
D	06/18/2021	JLL	ISSUED FOR REVIEW	DD	JAB
C	06/04/2021	JLL	ISSUED FOR REVIEW	DD	JAB
B	05/21/2021	JLL	ISSUED FOR REVIEW	DD	JAB
Rev	Date	Drawn	Description	Ch'k'd	App'd

M
MOTT
MACDONALD

101 Station Drive
Suite 130
Westwood, MA 02090
United States
T +1 (781) 915-0015
F +1 (781) 915-0001
W www.mottmac.com

Client

Title

**SOUTH RIPLEY SOLAR
ELECTRICAL SOLAR
ARRAY PARCEL DETAIL 13**

PRELIMINARY NOT FOR CONSTRUCTION REPLACE WITH ENGINEERS STAMP AT CONSTRUCTION AND/OR FABRICATION	Designed	BG	Eng check	JS
	Drawn	JLL	Approved	JAB
	Dwg check		Project Mngr	RA
	Scale at ANSI D		Date	Rev
	1" = 200'		07/23/2021	F
Drawing Number		SRS-E-400-14		

© Mott MacDonald
It is a violation of New York state Education Law for any person, unless acting under the direction of a licensed engineer to alter this document in any way.
This document is issued for the party which commissioned it and for specific purposes connected with the captioned project only. It should not be relied upon by any other party or used for any other purpose.
We accept no responsibility for the consequences of this document being relied upon by any other party, or being used for any other purpose, or containing any error or omission which is due to an error or omission in data supplied to us by other parties.

CONCEPTUAL - NOT FOR CONSTRUCTION