

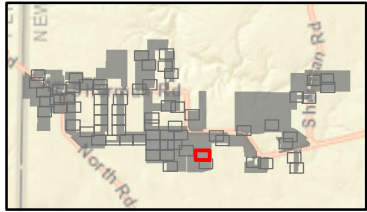
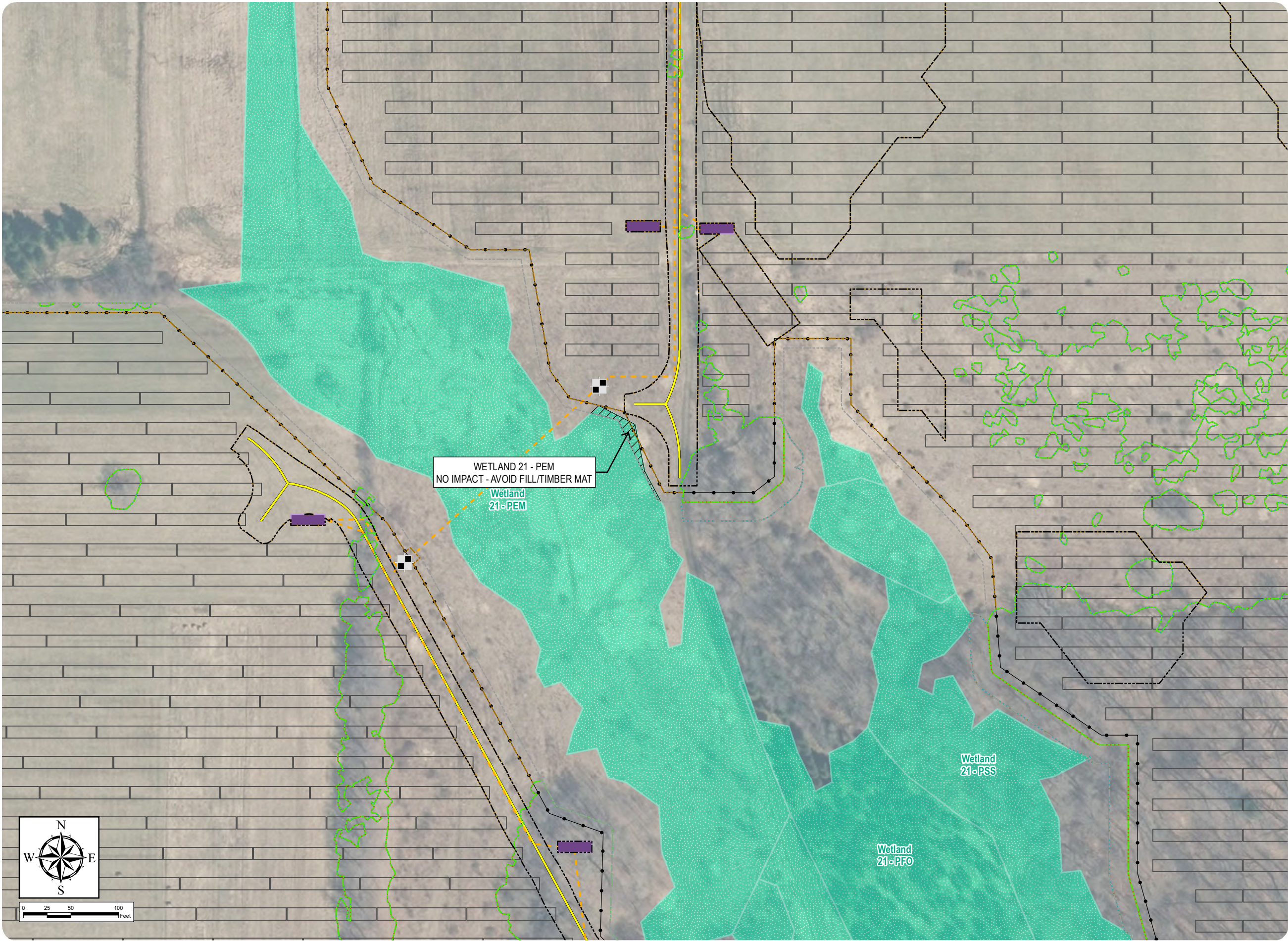
South Ripley Solar Project

Town of Ripley, Chautauqua County, New York

Section 94-c Application
Matter No. 21-00750

Appendix 14-C: Wetland and Stream Impact Drawings

- Wetland/Stream Impacts
- Area of No Impact
- Delineated Wetlands/Streams
- Delineated Wetland w/ Federal Jurisdiction
- Facility Components
- Access Road
 - Underground Collection Line
 - HDD Location
 - Inverter
 - PV Panel
 - Fenceline
 - Facility Site
 - Limit of Disturbance - Permanent Fill
 - Limit of Disturbance - Temporary Soil Disturbance
 - Limit of Disturbance - Grubbing
 - Limit of Disturbance - Tree Clearing
 - Limit of Disturbance - Temporary Work Area



Sheet 53 of 69

Notes: 1. Basemap: NYSDOP "2016" orthoimagery map service. 2. This map was generated in ArcMap on August 3, 2021. 3. This is a color graphic. Reproduction in grayscale may misrepresent the data.



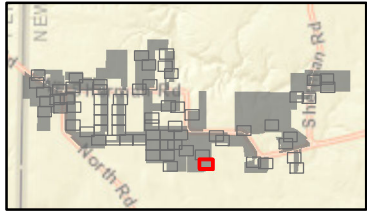
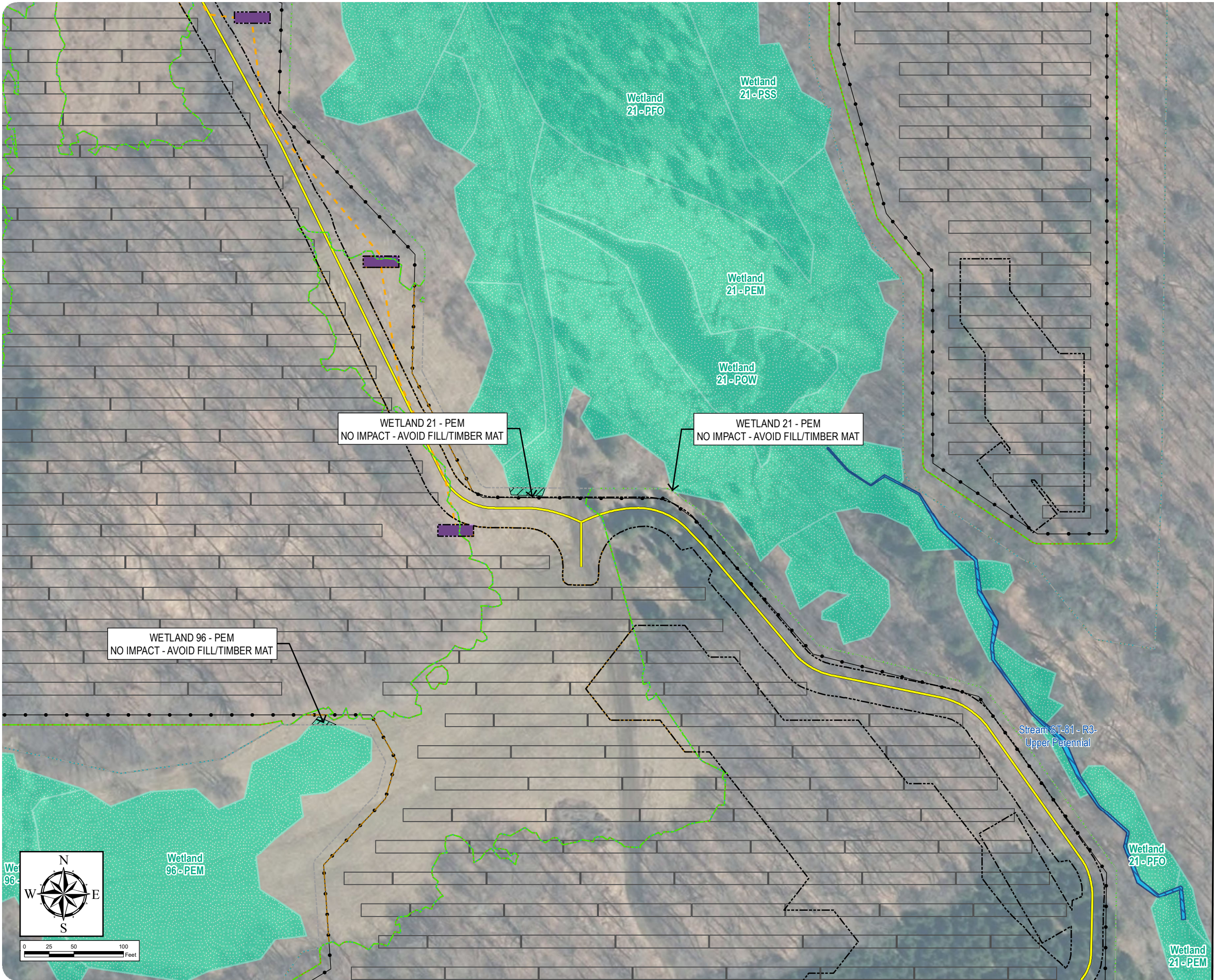
South Ripley Solar Project

Town of Ripley, Chautauqua County, New York

Section 94-c Application
Matter No. 21-00750

Appendix 14-C: Wetland and Stream Impact Drawings

- Wetland/Stream Impacts
- Area of No Impact
- Delineated Wetlands/Streams
- Delineated Wetland w/ Federal Jurisdiction
 - Delineated Stream w/ Federal Jurisdiction
- Facility Components
- Access Road
 - Underground Collection Line
 - Inverter
 - PV Panel
 - Fenceline
 - Facility Site
 - Limit of Disturbance - Permanent Fill
 - Limit of Disturbance - Temporary Soil Disturbance
 - Limit of Disturbance - Grubbing
 - Limit of Disturbance - Tree Clearing
 - Limit of Disturbance - Temporary Work Area



Sheet 54 of 69

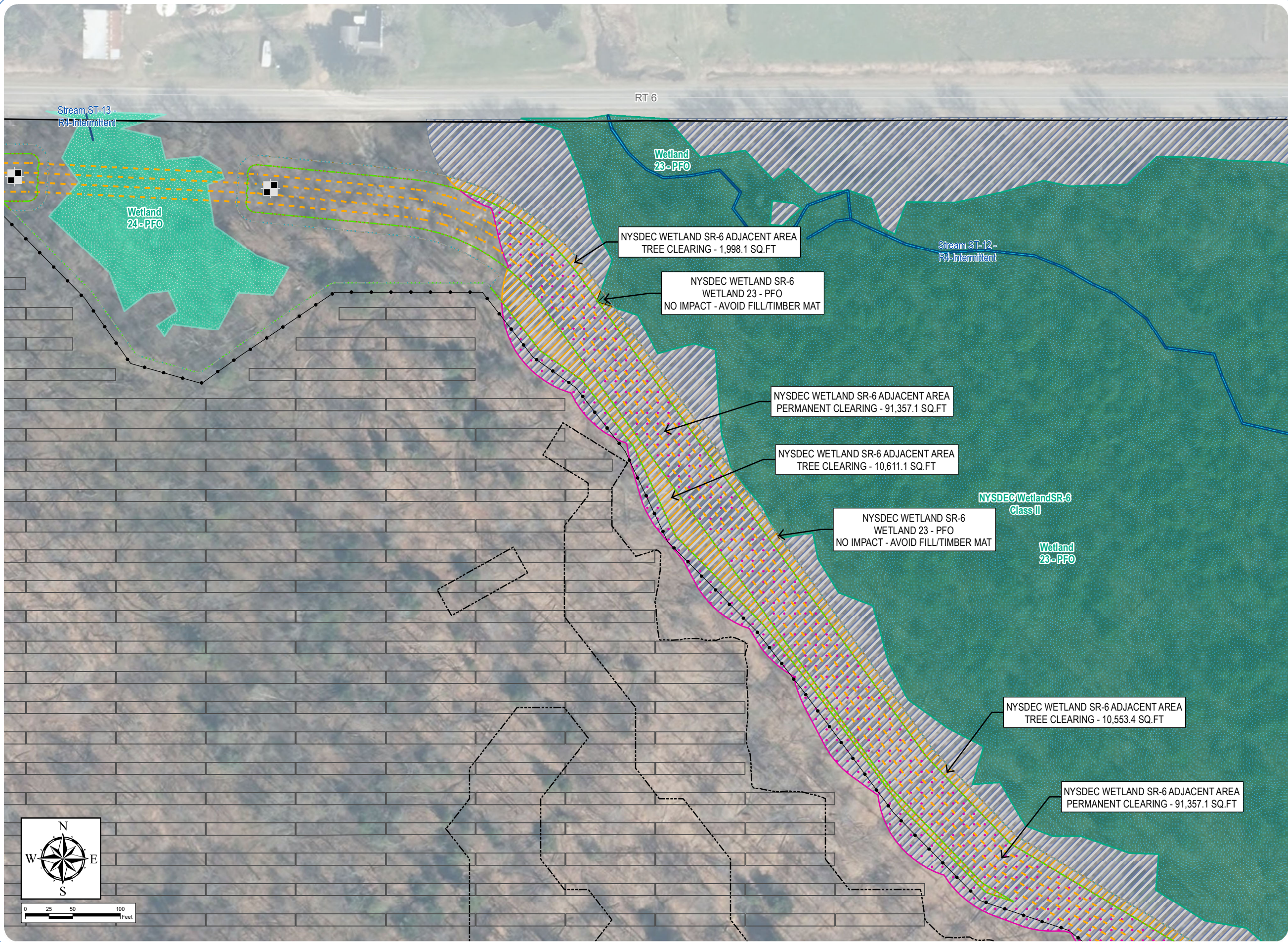
Notes: 1. Basemap: NYSDOP "2016" orthoimagery map service. 2. This map was generated in ArcMap on August 3, 2021. 3. This is a color graphic. Reproduction in grayscale may misrepresent the data.



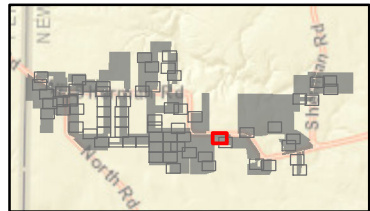
South Ripley Solar Project

Town of Ripley, Chautauqua County, New York
Section 94-c Application
Matter No. 21-00750

Appendix 14-C: Wetland and Stream Impact Drawings



- Wetland/Stream Impacts
- Permanent NYSDEC Regulated Adjacent Area Impact - Clearing
 - Temporary NYSDEC Regulated Adjacent Area Impact - Tree Clearing
 - Area of No Impact
- Delineated Wetlands/Streams
- Delineated Wetland w/ Federal Jurisdiction
 - Delineated Wetland w/ State & Federal Jurisdiction
 - Delineated Stream w/ Federal Jurisdiction
 - Regulated Adjacent Area Wetland
- Facility Components
- Access Road
 - Underground Collection Line
 - HDD Location
 - PV Panel
 - Fenceline
 - Facility Site
 - Limit of Disturbance - Permanent Fill
 - Limit of Disturbance - Temporary Soil Disturbance
 - Limit of Disturbance - Grubbing
 - Limit of Disturbance - Tree Clearing
 - Limit of Disturbance - Temporary Work Area



Sheet 55 of 69

Notes: 1. Basemap: NYSDOP "2016" orthoimagery map service. 2. This map was generated in ArcMap on August 3, 2021. 3. This is a color graphic. Reproduction in grayscale may misrepresent the data.

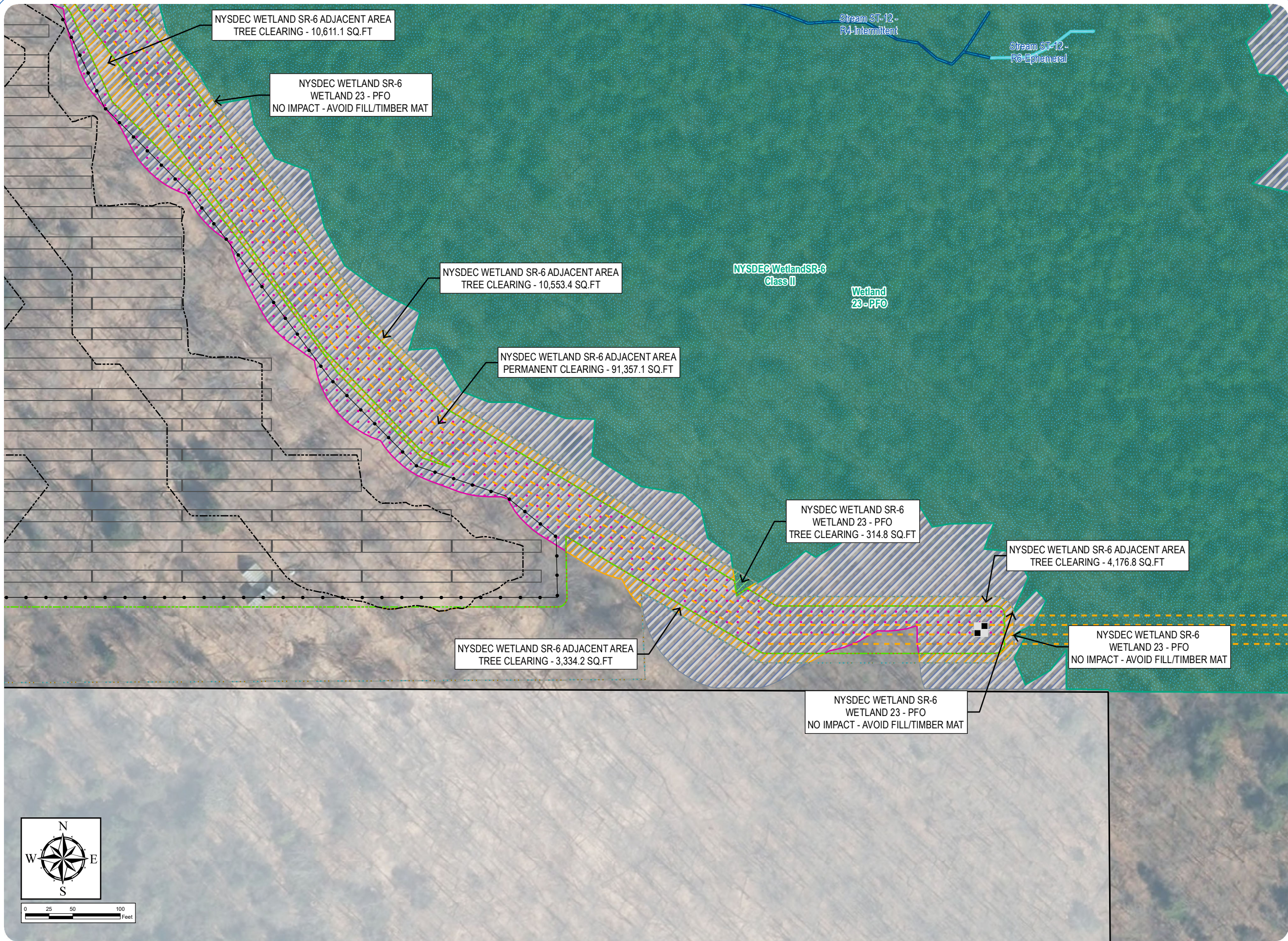


South Ripley Solar Project

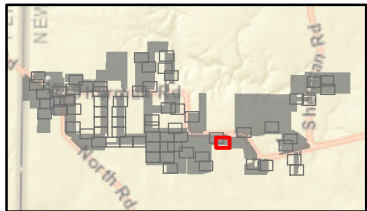
Town of Ripley, Chautauqua County, New York

Section 94-c Application
Matter No. 21-00750

Appendix 14-C: Wetland and Stream Impact Drawings



- Wetland/Stream Impacts
- Permanent NYSDEC Regulated Adjacent Area Impact - Clearing
 - Temporary NYSDEC Regulated Adjacent Area Impact - Work Area
 - Temporary NYSDEC Regulated Adjacent Area Impact - Tree Clearing
 - Temporary Wetland Impact - Tree Clearing
 - Area of No Impact
- Delineated Wetlands/Streams
- Delineated Wetland w/ State & Federal Jurisdiction
 - Delineated Stream Non-Jurisdictional
 - Delineated Stream w/ Federal Jurisdiction
 - Regulated Adjacent Area Wetland
- Facility Components
- Access Road
 - Underground Collection Line
 - HDD Location
 - PV Panel
 - Fenceline
 - Facility Site
 - Limit of Disturbance - Permanent Fill
 - Limit of Disturbance - Temporary Soil Disturbance
 - Limit of Disturbance - Grubbing
 - Limit of Disturbance - Tree Clearing
 - Limit of Disturbance - Temporary Work Area



Sheet 56 of 69

Notes: 1. Basemap: NYSDOP "2016" orthoimagery map service. 2. This map was generated in ArcMap on August 3, 2021. 3. This is a color graphic. Reproduction in grayscale may misrepresent the data.

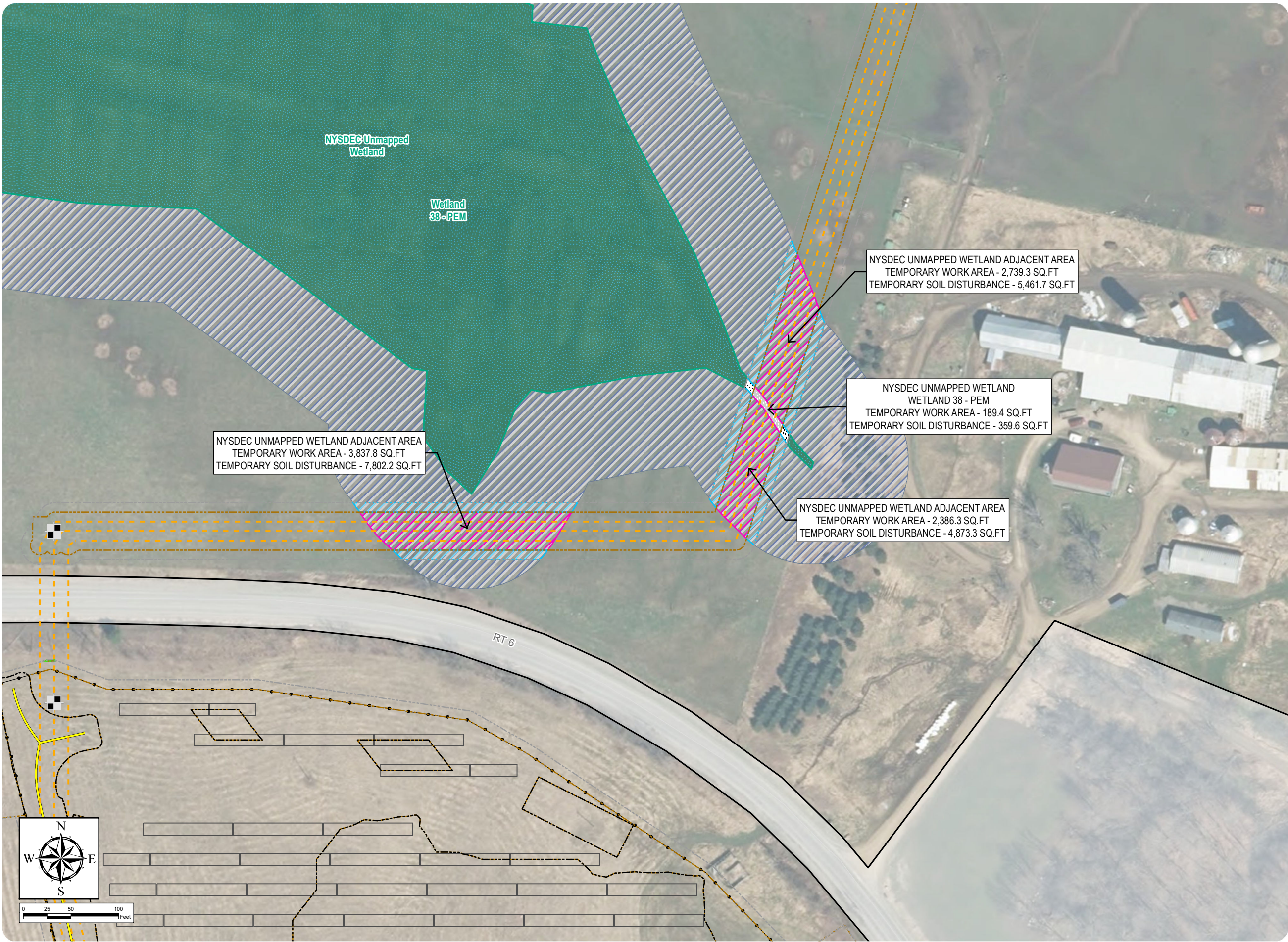


South Ripley Solar Project

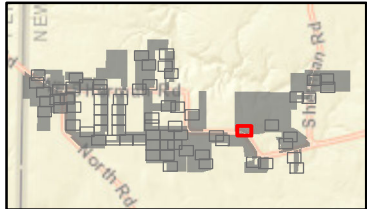
Town of Ripley, Chautauqua County, New York

Section 94-c Application
Matter No. 21-00750

Appendix 14-C: Wetland and Stream Impact Drawings



- Wetland/Stream Impacts
- Temporary NYSDEC Regulated Adjacent Area Impact - Work Area
 - Temporary NYSDEC Regulated Adjacent Area Impact - Soil Disturbance
 - Temporary Wetland Impact - Work Area
 - Temporary Wetland Impact - Soil Disturbance
- Delineated Wetlands/Streams
- Delineated Wetland w/ State & Federal Jurisdiction
 - Regulated Adjacent Area Wetland
- Facility Components
- Access Road
 - Underground Collection Line
 - HDD Location
 - PV Panel
 - Fenceline
 - Facility Site
 - Limit of Disturbance - Permanent Fill
 - Limit of Disturbance - Temporary Soil Disturbance
 - Limit of Disturbance - Grubbing
 - Limit of Disturbance - Tree Clearing
 - Limit of Disturbance - Temporary Work Area



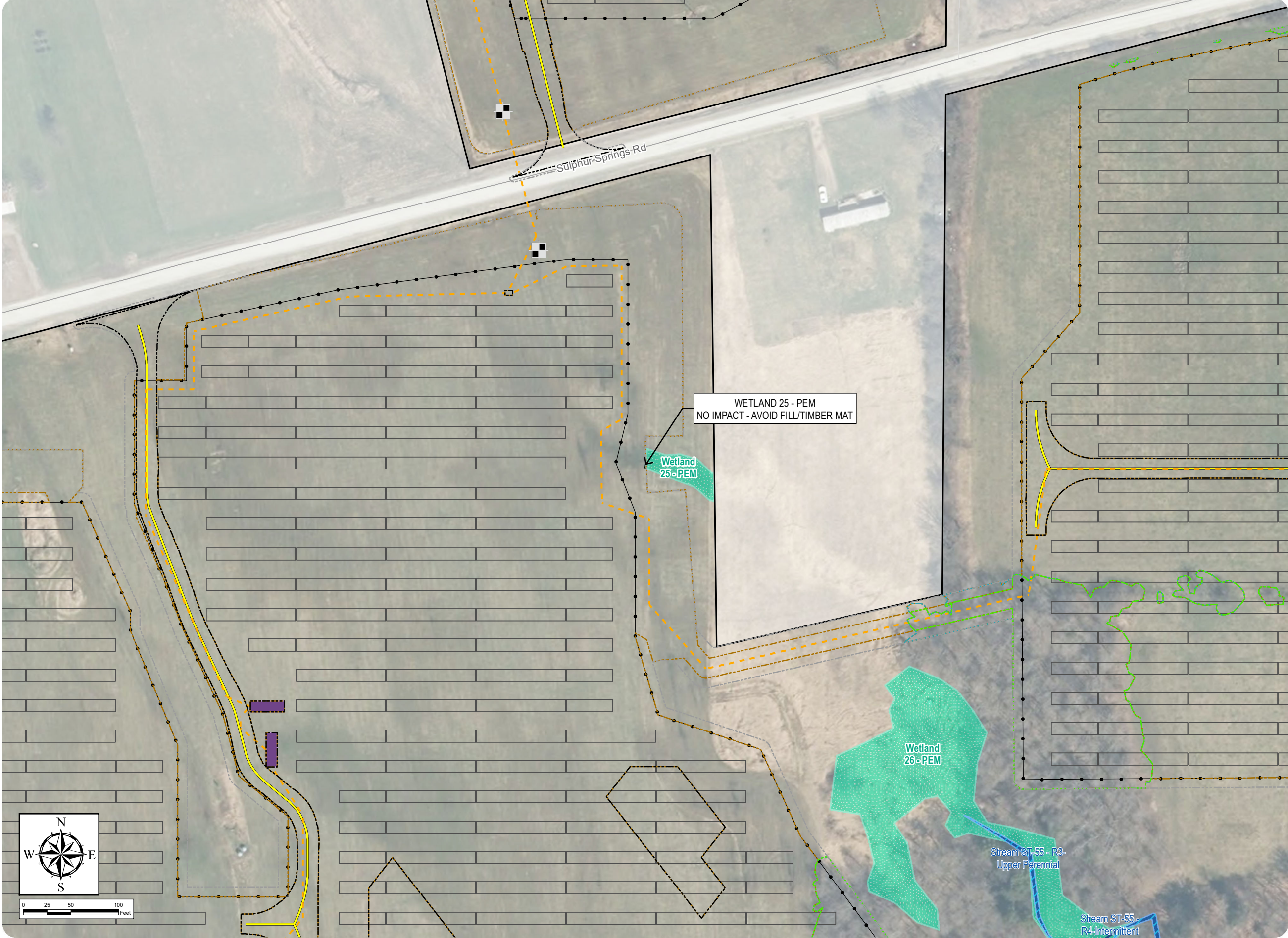
Sheet 57 of 69

Notes: 1. Basemap: NYSDOP "2016" orthoimagery map service. 2. This map was generated in ArcMap on August 3, 2021. 3. This is a color graphic. Reproduction in grayscale may misrepresent the data.



South Ripley Solar Project
Town of Ripley, Chautauqua County, New York
Section 94-c Application
Matter No. 21-00750
Appendix 14-C: Wetland and Stream Impact Drawings

- Wetland/Stream Impacts
- Area of No Impact
- Delineated Wetlands/Streams
- Delineated Wetland w/ Federal Jurisdiction
 - Delineated Stream w/ Federal Jurisdiction
 - Delineated Stream w/ Federal & State Jurisdiction
- Facility Components
- Access Road
 - Underground Collection Line
 - HDD Location
 - Inverter
 - PV Panel
 - Fenceline
 - Facility Site
 - Limit of Disturbance - Permanent Fill
 - Limit of Disturbance - Temporary Soil Disturbance
 - Limit of Disturbance - Grubbing
 - Limit of Disturbance - Tree Clearing
 - Limit of Disturbance - Temporary Work Area



Sheet 58 of 69

Notes: 1. Basemap: NYSDOP "2016" orthoimagery map service. 2. This map was generated in ArcMap on August 3, 2021. 3. This is a color graphic. Reproduction in grayscale may misrepresent the data.

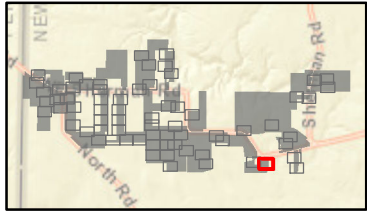


South Ripley Solar Project

Town of Ripley, Chautauqua County, New York
Section 94-c Application
Matter No. 21-00750

Appendix 14-C: Wetland and Stream Impact Drawings

- Wetland/Stream Impacts
- Area of No Impact
- Delineated Wetlands/Streams
- Delineated Wetland w/ Federal Jurisdiction
 - Delineated Stream w/ Federal Jurisdiction
 - Delineated Stream w/ Federal & State Jurisdiction
- Facility Components
- Access Road
 - Underground Collection Line
 - Inverter
 - PV Panel
 - Fenceline
 - Facility Site
 - Limit of Disturbance - Permanent Fill
 - Limit of Disturbance - Temporary Soil Disturbance
 - Limit of Disturbance - Grubbing
 - Limit of Disturbance - Tree Clearing
 - Limit of Disturbance - Temporary Work Area



Sheet 59 of 69

Notes: 1. Basemap: NYSDOP "2016" orthoimagery map service. 2. This map was generated in ArcMap on August 3, 2021. 3. This is a color graphic. Reproduction in grayscale may misrepresent the data.

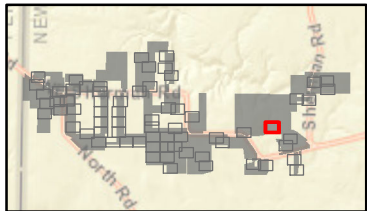


South Ripley Solar Project

Town of Ripley, Chautauqua County, New York
Section 94-c Application
Matter No. 21-00750

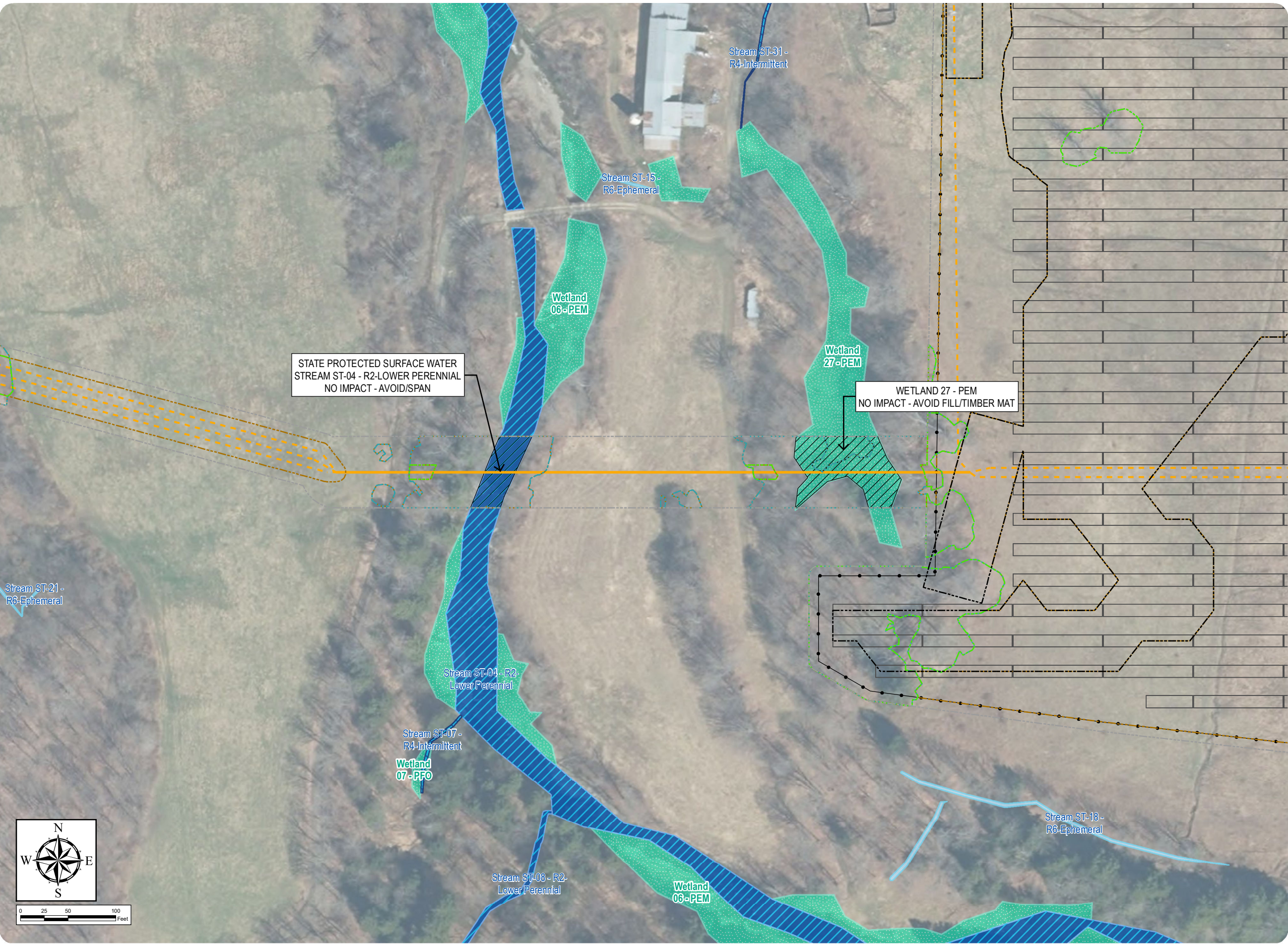
Appendix 14-C: Wetland and Stream Impact Drawings

- Wetland/Stream Impacts
- Area of No Impact
- Delineated Wetlands/Streams
- Delineated Wetland w/ Federal Jurisdiction
 - Delineated Stream Non-Jurisdictional
 - Delineated Stream w/ Federal Jurisdiction
 - Delineated Stream w/ Federal & State Jurisdiction
- Facility Components
- Access Road
 - Overhead Collection Line
 - Underground Collection Line
 - PV Panel
 - Fenceline
 - Facility Site
 - Limit of Disturbance - Permanent Fill
 - Limit of Disturbance - Temporary Soil Disturbance
 - Limit of Disturbance - Grubbing
 - Limit of Disturbance - Tree Clearing
 - Limit of Disturbance - Temporary Work Area



Sheet 60 of 69

Notes: 1. Basemap: NYSDOP "2016" orthoimagery map service. 2. This map was generated in ArcMap on August 3, 2021. 3. This is a color graphic. Reproduction in grayscale may misrepresent the data.



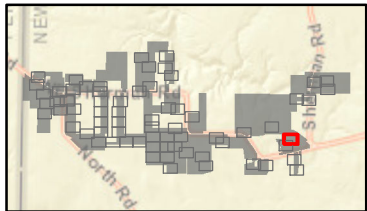
South Ripley Solar Project

Town of Ripley, Chautauqua County, New York

Section 94-c Application
Matter No. 21-00750

Appendix 14-C: Wetland and Stream Impact Drawings

- Wetland/Stream Impacts
- Area of No Impact
- Delineated Wetlands/Streams
- Delineated Wetland w/ Federal Jurisdiction
 - Delineated Stream Non-Jurisdictional
 - Delineated Stream w/ Federal Jurisdiction
- Facility Components
- Access Road
 - Underground Collection Line
 - Inverter
 - PV Panel
 - Fenceline
 - Facility Site
 - Limit of Disturbance - Permanent Fill
 - Limit of Disturbance - Temporary Soil Disturbance
 - Limit of Disturbance - Grubbing
 - Limit of Disturbance - Tree Clearing
 - Limit of Disturbance - Temporary Work Area



Sheet 61 of 69

Notes: 1. Basemap: NYSDOP "2016" orthoimagery map service. 2. This map was generated in ArcMap on August 3, 2021. 3. This is a color graphic. Reproduction in grayscale may misrepresent the data.



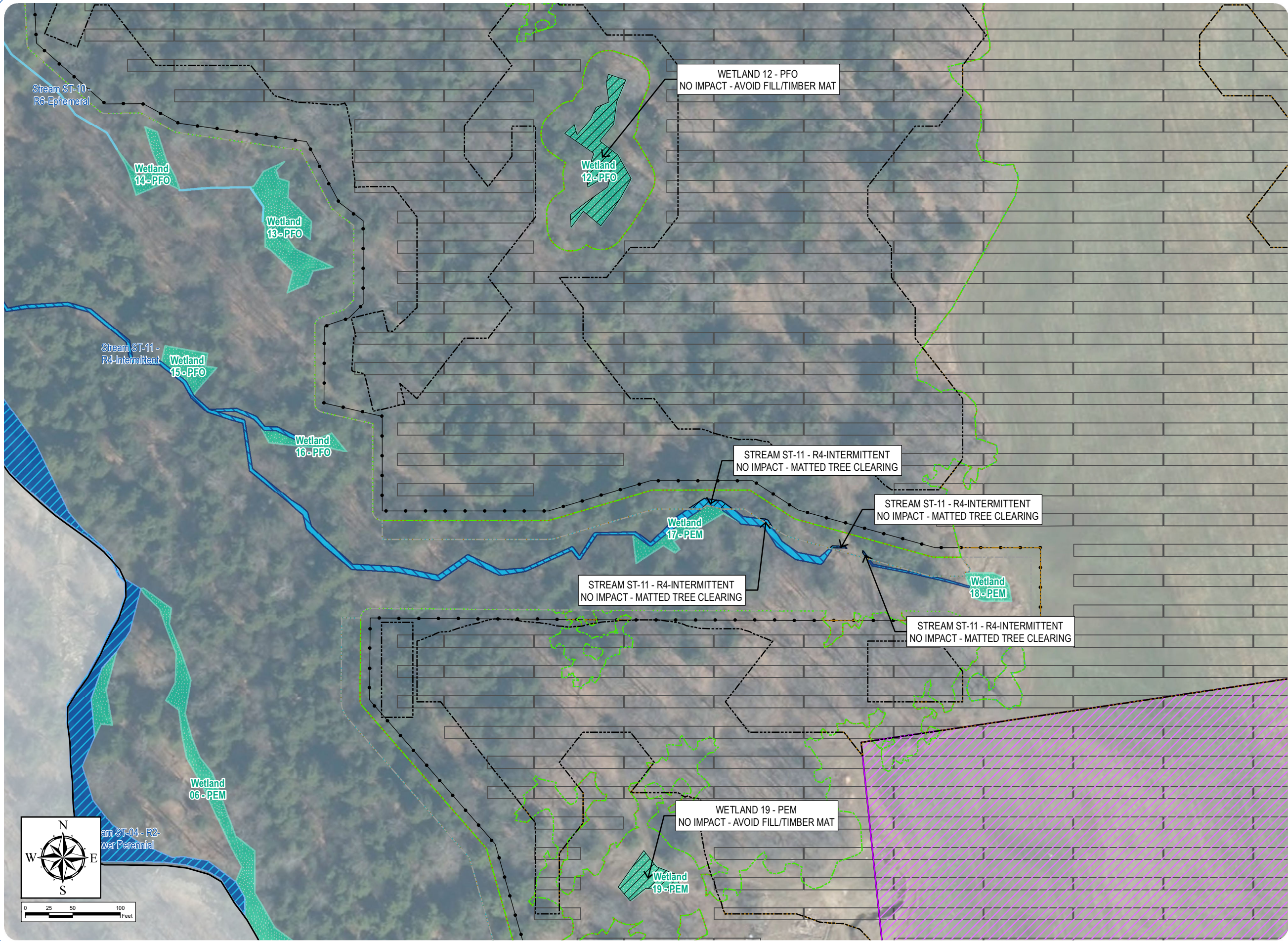
South Ripley Solar Project

Town of Ripley, Chautauqua County, New York

Section 94-c Application
Matter No. 21-00750

Appendix 14-C: Wetland and Stream Impact Drawings

- Wetland/Stream Impacts
- Area of No Impact
- Delineated Wetlands/Streams
- Delineated Wetland w/ Federal Jurisdiction
 - Delineated Stream Non-Jurisdictional
 - Delineated Stream w/ Federal Jurisdiction
 - Delineated Stream w/ Federal & State Jurisdiction
- Facility Components
- Access Road
 - Laydown Yard
 - PV Panel
 - Fenceline
 - Facility Site
 - Limit of Disturbance - Permanent Fill
 - Limit of Disturbance - Temporary Soil Disturbance
 - Limit of Disturbance - Grubbing
 - Limit of Disturbance - Tree Clearing
 - Limit of Disturbance - Temporary Work Area



Sheet 62 of 69

Notes: 1. Basemap: NYSDOP "2016" orthoimagery map service. 2. This map was generated in ArcMap on August 3, 2021. 3. This is a color graphic. Reproduction in grayscale may misrepresent the data.

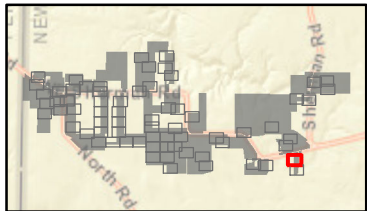


South Ripley Solar Project

Town of Ripley, Chautauqua County, New York
Section 94-c Application
Matter No. 21-00750

Appendix 14-C: Wetland and Stream Impact Drawings

- Wetland/Stream Impacts
- Area of No Impact
- Delineated Wetlands/Streams
- Delineated Wetland w/ Federal Jurisdiction
- Facility Components
- Access Road
 - Underground Collection Line
 - HDD Location
 - PV Panel
 - Fenceline
 - Facility Site
 - Limit of Disturbance - Permanent Fill
 - Limit of Disturbance - Temporary Soil Disturbance
 - Limit of Disturbance - Grubbing
 - Limit of Disturbance - Tree Clearing
 - Limit of Disturbance - Temporary Work Area



Sheet 63 of 69

Notes: 1. Basemap: NYSDOP "2016" orthoimagery map service. 2. This map was generated in ArcMap on August 3, 2021. 3. This is a color graphic. Reproduction in grayscale may misrepresent the data.

