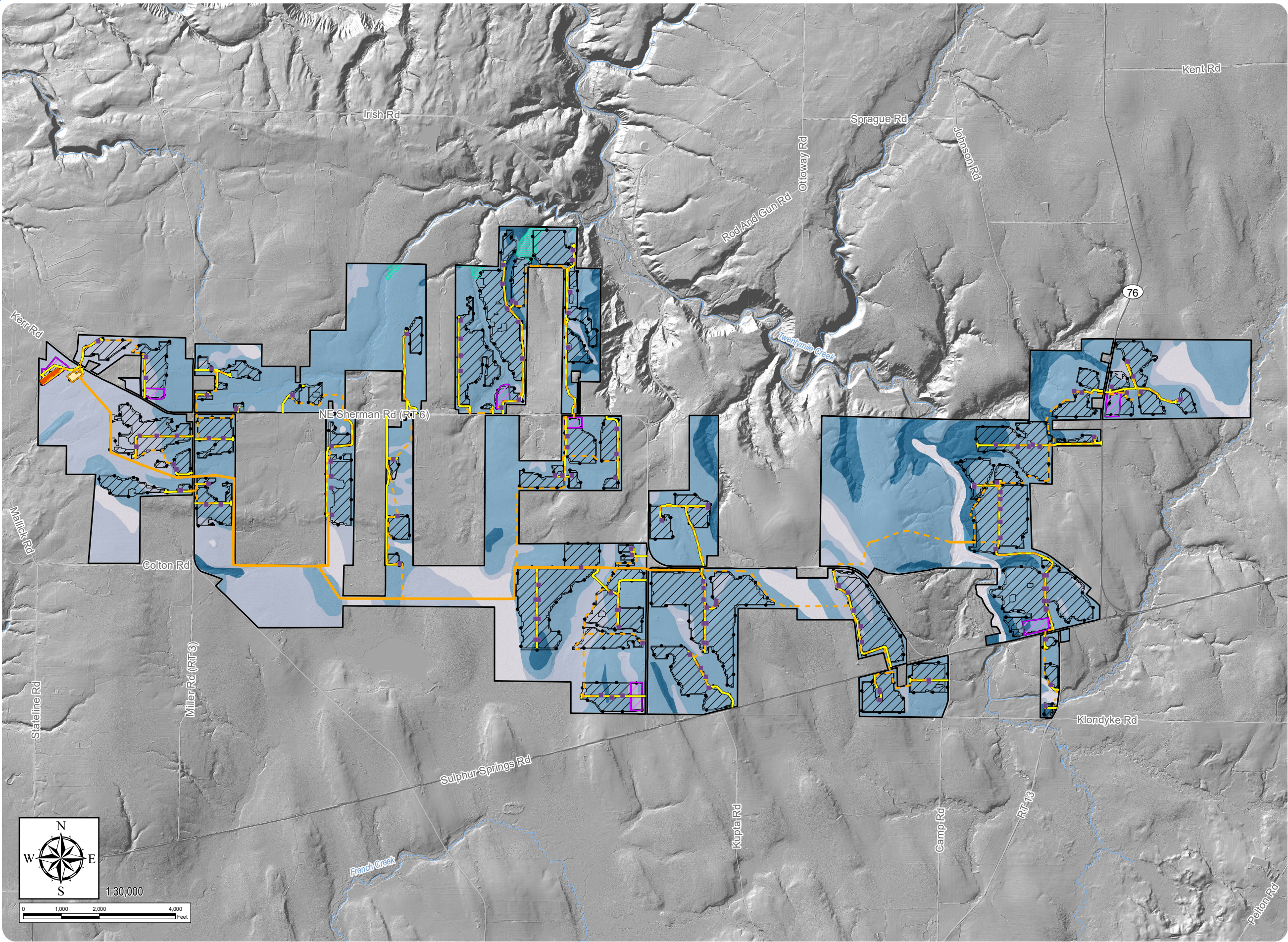


South Ripley Solar Project

Town of Ripley, Chautauqua County, New York

Section 94-c Application
Matter No. 21-00750

Figure 10-4: Bedrock



Mapped Depth to Bedrock

1-3 feet₂

Mapped Depth to High Water Table

0 (At Ground Surface)

< 1 Foot

1 - 3 Feet

3 - 6 Feet

> 6 Feet

Facility Components

Access Road

Underground Collection Line

Overhead Collection Line

Fenceline

PV Panel Area

Inverter

Substation

Battery Energy Storage System

Laydown Yard

Facility Site

Notes: 1. Basemap: Hillshade derived from 1-meter resolution Lidar data and 3-meter USGS DEM data. 2. Unless otherwise depicted, depth to bedrock is greater than 6 feet. 3. Geotechnical boring locations and results are described in the Appendix 10-A Geotechnical Investigation Report. 4. This map was generated in ArcMap on June 18, 2021. 5. This is a color graphic. Reproduction in grayscale may misrepresent the data.

