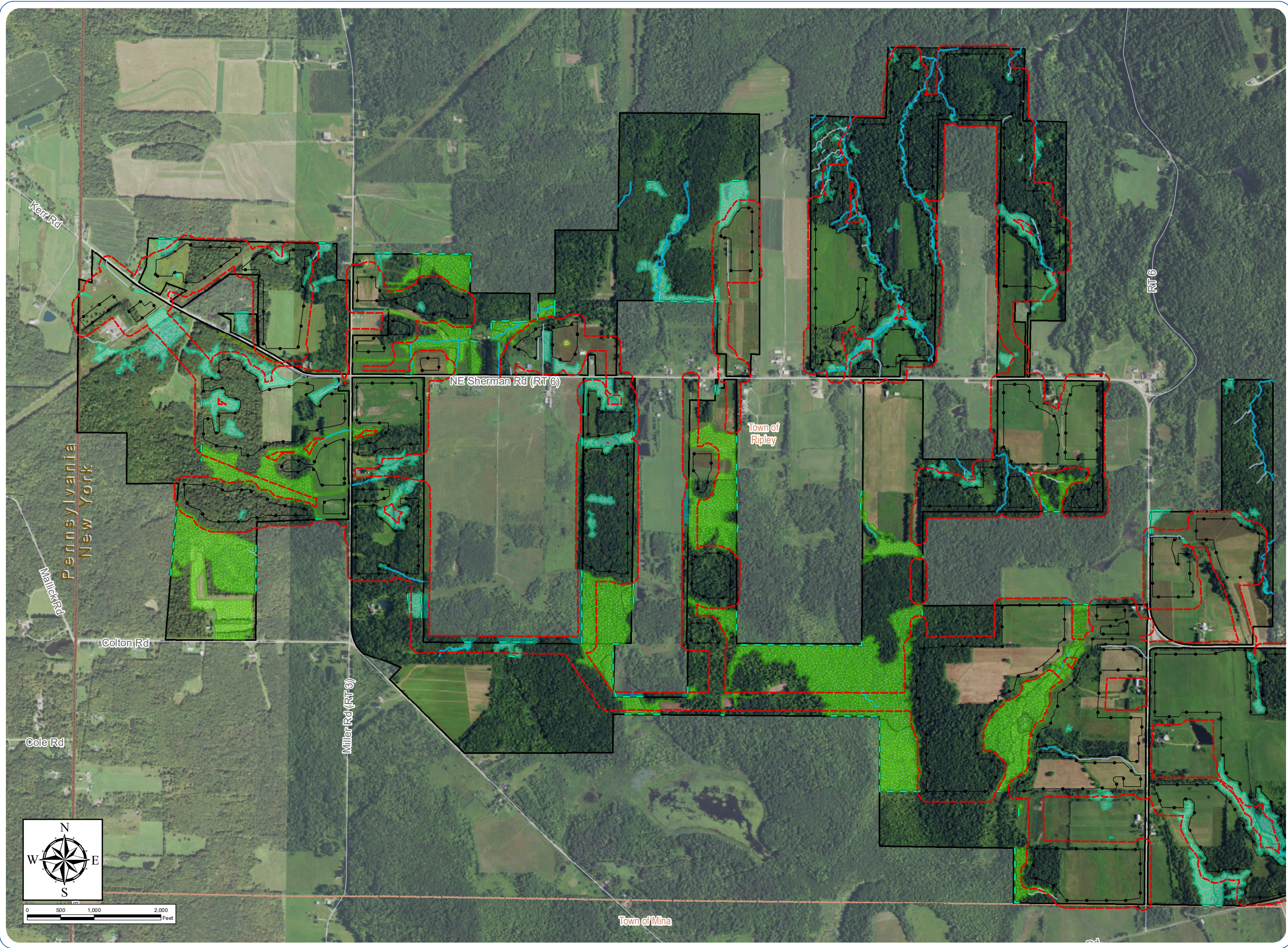


South Ripley Solar Project

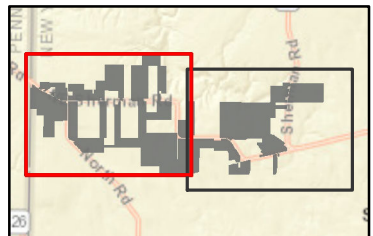
Town of Ripley, Chautauqua County, New York

Section 94-c Application
Matter No. 21-00750

Figure 14-1: Delineated Wetlands and Streams



- Wetlands and Streams
- Wetland Continues
 - Delineated Stream Non-Jurisdictional
 - Delineated Stream w/ Federal Jurisdiction
 - Delineated Stream w/ State & Federal Jurisdiction
 - Delineated Wetland Non-Jurisdictional
 - Delineated Wetland w/ Federal Jurisdiction
 - Delineated Wetland w/ State & Federal Jurisdiction
 - Approximate Stream
 - Approximate Wetland
- Facility Components
- Fenceline
 - Facility Site
 - Wetland Study Area



Sheet 1 of 2

Notes: 1. Basemap: USDA NAIP "2019 New York 60cm" orthoimagery map service. 2. This map was generated in ArcMap on July 26, 2021. 3. This is a color graphic. Reproduction in grayscale may misrepresent the data.

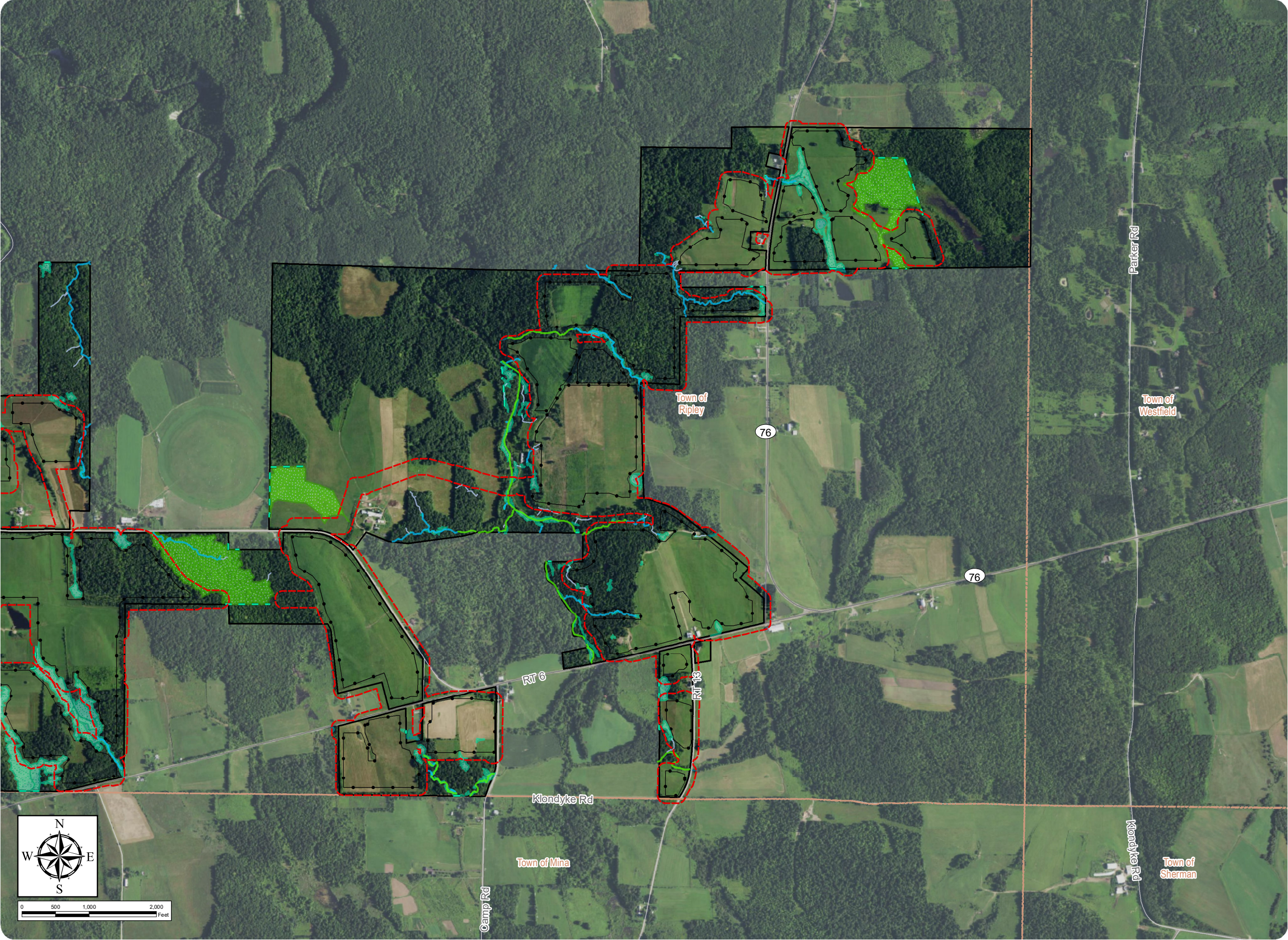


South Ripley Solar Project

Town of Ripley, Chautauqua County, New York

Section 94-c Application
Matter No. 21-00750

Figure 14-1: Delineated Wetlands and Streams



- Wetlands and Streams
- Wetland Continues
 - Delineated Stream Non-Jurisdictional
 - Delineated Stream w/ Federal Jurisdiction
 - Delineated Stream w/ State & Federal Jurisdiction
 - Delineated Wetland w/ Federal Jurisdiction
 - Delineated Wetland w/ State & Federal Jurisdiction
 - Approximate Stream
 - Approximate Wetland
- Facility Components
- Fenceline
 - Facility Site
 - Wetland Study Area



Sheet 2 of 2

Notes: 1. Basemap: USDA NAIP "2019 New York 60cm" orthoimagery map service. 2. This map was generated in ArcMap on July 26, 2021. 3. This is a color graphic. Reproduction in grayscale may misrepresent the data.

