

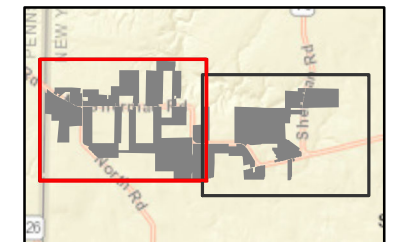
South Ripley Solar Project

Town of Ripley, Chautauqua County, New York

Section 94-c Application
Matter No. 21-00750

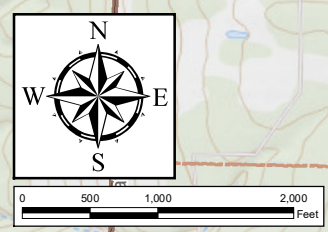
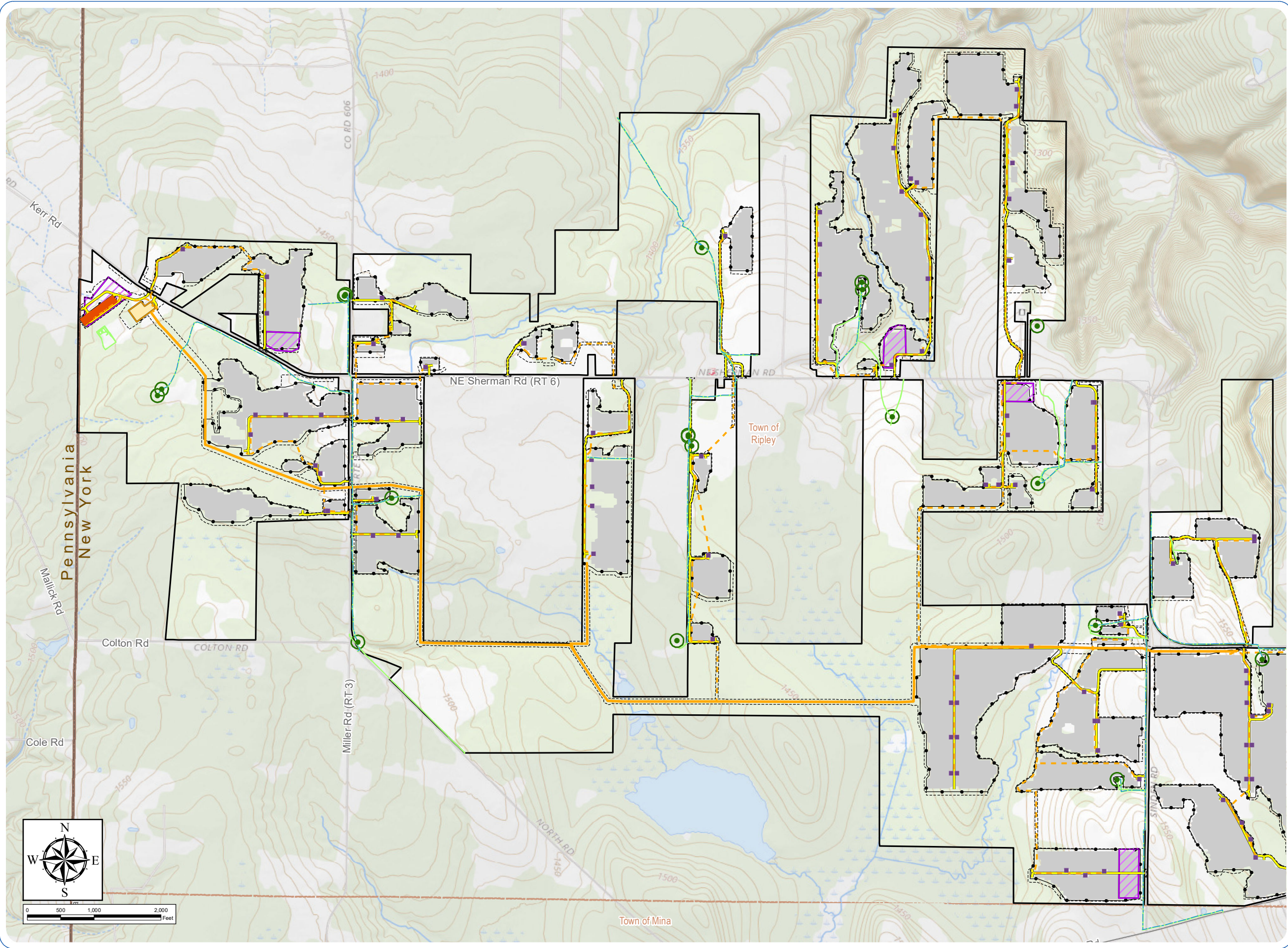
Figure 3-12: Oil and Gas Well Setbacks

- Oil and Gas Well
 - Mapped Pipeline
 - 20 ft Buffer for Oil and Gas Well Access
 - Oil and Gas Well with 100 ft Setback
- Facility Components
- Access Road
 - - - Underground Collection Line
 - Overhead Collection Line
 - Inverter
 - Battery Energy Storage System
 - Substation
 - PV Panel Area
 - Fenceline
 - Laydown Yard
 - - - Limit of Construction Activity
 - Facility Site



Sheet 1 of 2

Notes: 1. Basemap: ESRI ArcGIS Online "USGS Topo" map service. 2. This map was generated in ArcMap on August 5, 2021. 3. This is a color graphic. Reproduction in grayscale may misrepresent the data.



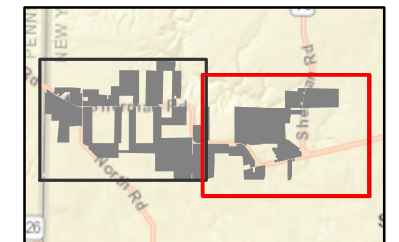
South Ripley Solar Project

Town of Ripley, Chautauqua County, New York

Section 94-c Application
Matter No. 21-00750

Figure 3-12: Oil and Gas Well Setbacks

- Oil and Gas Well
 - Mapped Pipeline
 - 20 ft Buffer for Oil and Gas Well Access
 - Oil and Gas Well with 100 ft Setback
- Facility Components
- Access Road
 - Underground Collection Line
 - Overhead Collection Line
 - Inverter
 - PV Panel Area
 - Fenceline
 - Laydown Yard
 - Limit of Construction Activity
 - Facility Site



Sheet 2 of 2

Notes: 1. Basemap: ESRI ArcGIS Online "USGS Topo" map service. 2. This map was generated in ArcMap on August 5, 2021. 3. This is a color graphic. Reproduction in grayscale may misrepresent the data.

