



## South Ripley Solar Project

Town of Ripley, Chautauqua County, New York

Figure 1. Receptor Viewsheds

Notes: 1. Basemap: USDA NAIP "2019 New York 60cm" orthoimagery map service. 2. This map was generated in ArcMap on July 27, 2021. 3. This is a color graphic. Reproduction in grayscale may misrepresent the data.

- Participating Receptor
- PV Panel
- Receptor Viewshed



[www.edrdpc.com](http://www.edrdpc.com)





## South Ripley Solar Project

Town of Ripley, Chautauqua County, New York

Figure 1. Receptor Viewsheds

Notes: 1. Basemap:USDA NAIP "2019 New York 60cm" orthoimagery map service. 2. This map was generated in ArcMap on July 27, 2021. 3. This is a color graphic. Reproduction in grayscale may misrepresent the data.

- Non-Participating Receptor
- PV Panel
- Receptor Viewshed



www.edrdpc.com





## South Ripley Solar Project

Town of Ripley, Chautauqua County, New York

Figure 1. Receptor Viewsheds

Notes: 1. Basemap:USDA NAIP "2019 New York 60cm" orthoimagery map service. 2. This map was generated in ArcMap on July 27, 2021. 3. This is a color graphic. Reproduction in grayscale may misrepresent the data.

- Non-Participating Receptor
- PV Panel
- Receptor Viewshed



www.edrdpc.com





## South Ripley Solar Project

Town of Ripley, Chautauqua County, New York

Figure 1. Receptor Viewsheds

Notes: 1. Basemap: USDA NAIP "2019 New York 60cm" orthoimagery map service. 2. This map was generated in ArcMap on July 27, 2021. 3. This is a color graphic. Reproduction in grayscale may misrepresent the data.

- Non-Participating Receptor
- PV Panel
- Receptor Viewshed





## South Ripley Solar Project

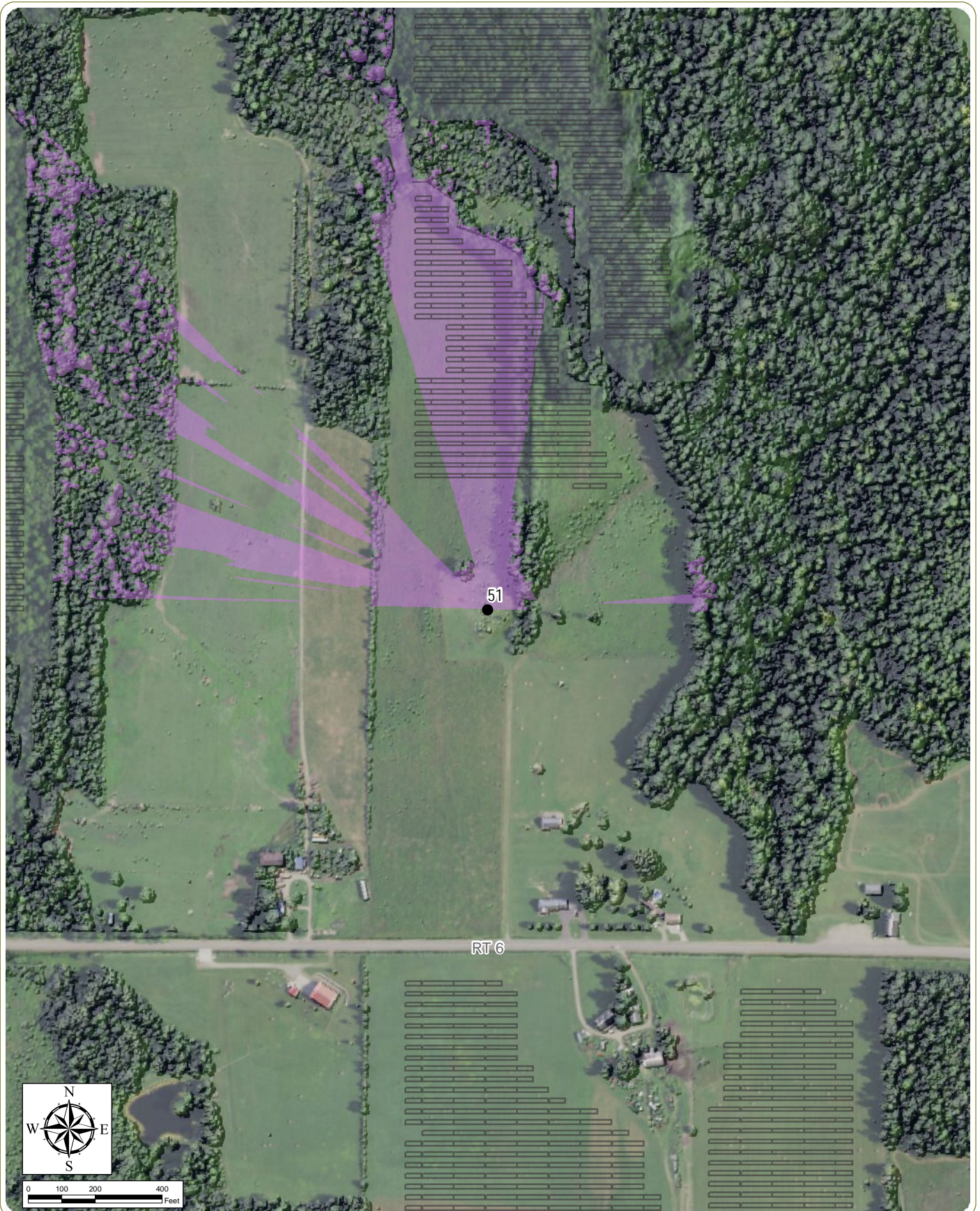
Town of Ripley, Chautauqua County, New York

Figure 1. Receptor Viewsheds

Notes: 1. Basemap: USDA NAIP "2019 New York 60cm" orthoimagery map service. 2. This map was generated in ArcMap on July 27, 2021. 3. This is a color graphic. Reproduction in grayscale may misrepresent the data.

- Non-Participating Receptor
- PV Panel
- Receptor Viewshed





## South Ripley Solar Project

Town of Ripley, Chautauqua County, New York

Figure 1. Receptor Viewsheds

Notes: 1. Basemap: USDA NAIP "2019 New York 60cm" orthoimagery map service. 2. This map was generated in ArcMap on July 27, 2021. 3. This is a color graphic. Reproduction in grayscale may misrepresent the data.

- Non-Participating Receptor
- PV Panel
- Receptor Viewshed





## South Ripley Solar Project

Town of Ripley, Chautauqua County, New York

Figure 1. Receptor Viewsheds

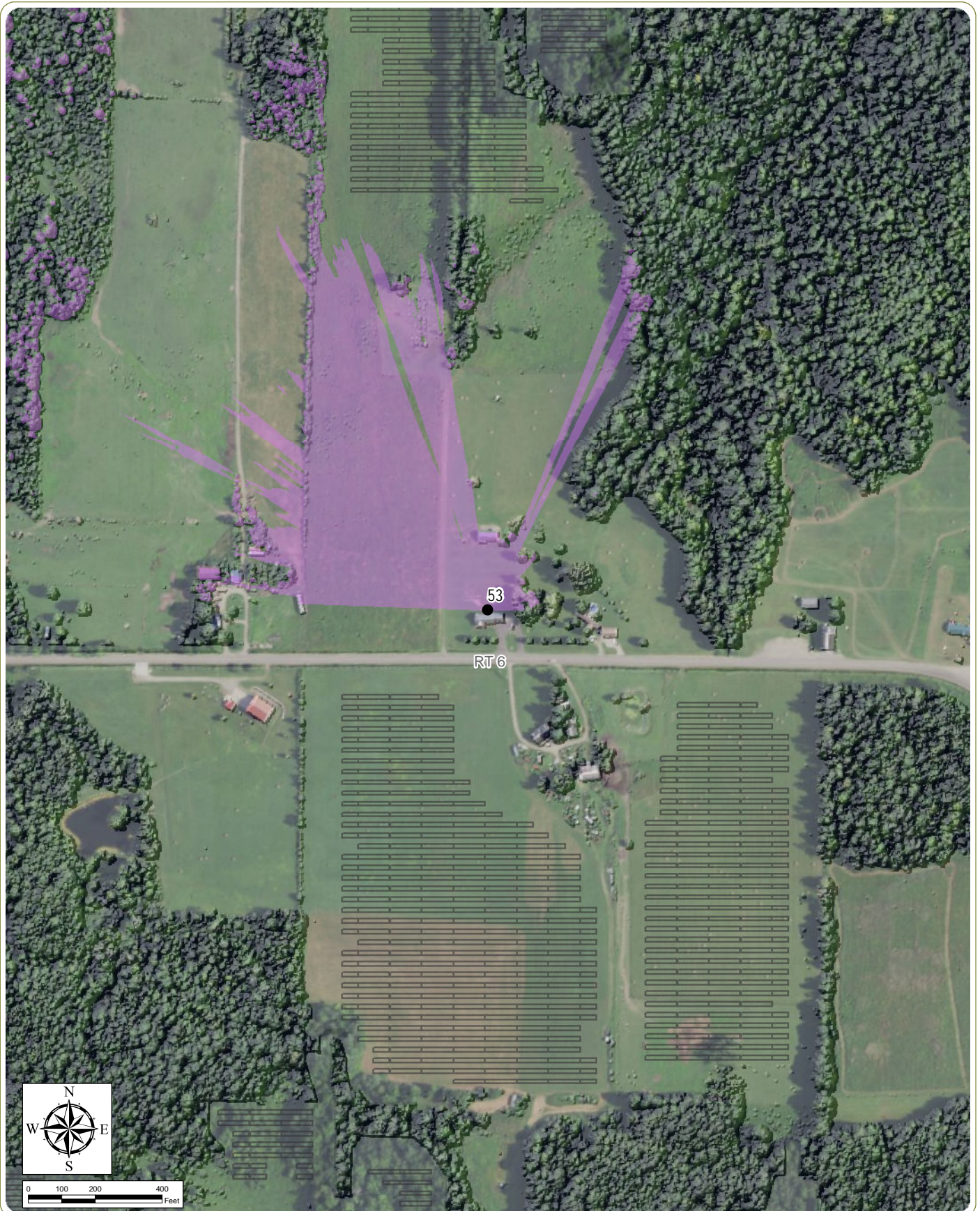
Notes: 1. Basemap:USDA NAIP "2019 New York 60cm" orthoimagery map service. 2. This map was generated in ArcMap on July 27, 2021. 3. This is a color graphic. Reproduction in grayscale may misrepresent the data.

- Non-Participating Receptor
- PV Panel
- Receptor Viewshed



www.edrdpc.com





## South Ripley Solar Project

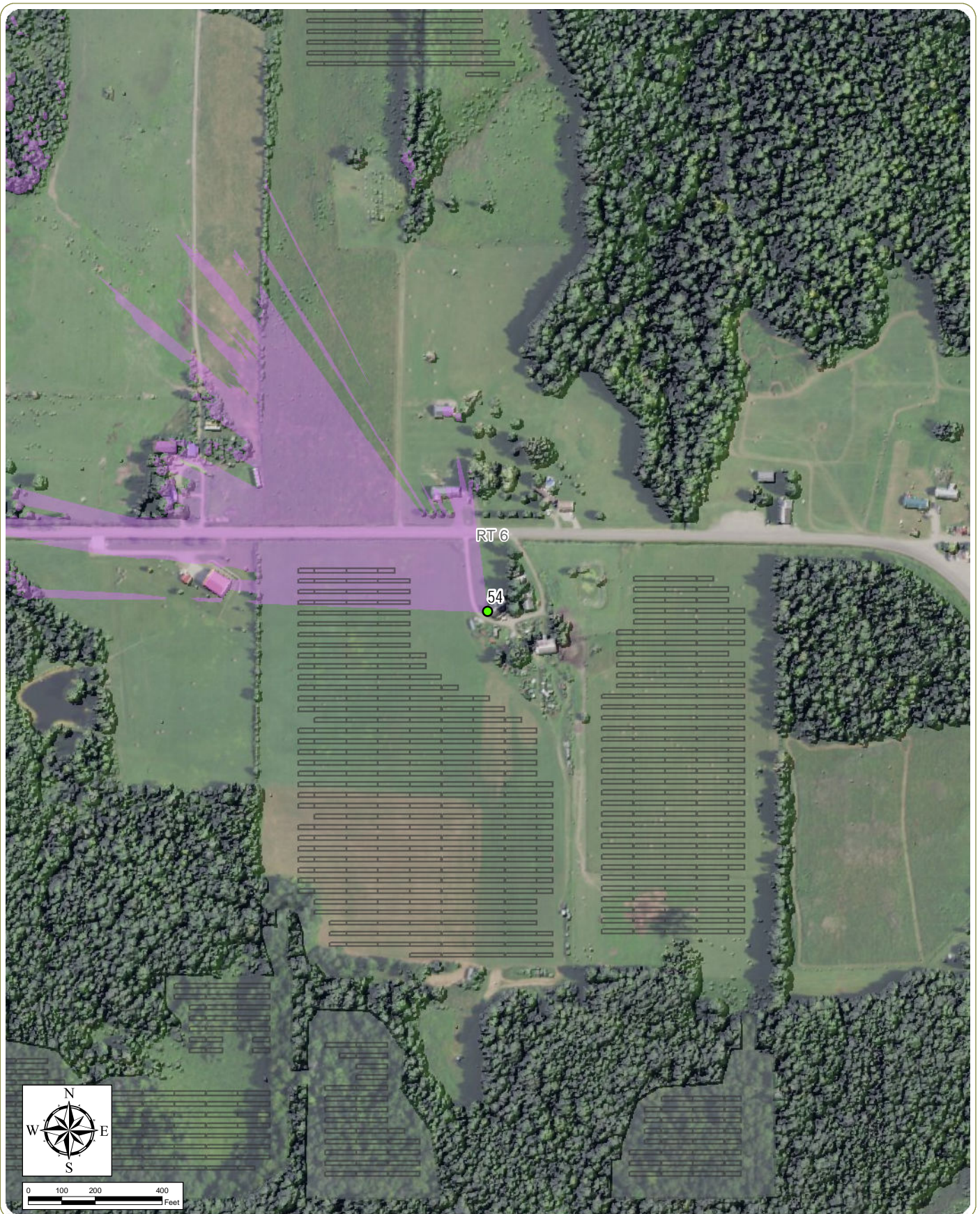
Town of Ripley, Chautauqua County, New York

Figure 1. Receptor Viewsheds

Notes: 1. Basemap:USDA NAIP "2019 New York 60cm" orthoimagery map service. 2. This map was generated in ArcMap on July 27, 2021. 3. This is a color graphic. Reproduction in grayscale may misrepresent the data.

- Non-Participating Receptor
- PV Panel
- Receptor Viewshed





## South Ripley Solar Project

Town of Ripley, Chautauqua County, New York

Figure 1. Receptor Viewsheds

Notes: 1. Basemap:USDA NAIP "2019 New York 60cm" orthoimagery map service. 2. This map was generated in ArcMap on July 27, 2021. 3. This is a color graphic. Reproduction in grayscale may misrepresent the data.

- Participating Receptor
- PV Panel
- Receptor Viewshed





## South Ripley Solar Project

Town of Ripley, Chautauqua County, New York

Figure 1. Receptor Viewsheds

Notes: 1. Basemap:USDA NAIP "2019 New York 60cm" orthoimagery map service. 2. This map was generated in ArcMap on July 27, 2021. 3. This is a color graphic. Reproduction in grayscale may misrepresent the data.

- Non-Participating Receptor
- PV Panel
- Receptor Viewshed





## South Ripley Solar Project

Town of Ripley, Chautauqua County, New York

Figure 1. Receptor Viewsheds

Notes: 1. Basemap:USDA NAIP "2019 New York 60cm" orthoimagery map service. 2. This map was generated in ArcMap on July 27, 2021. 3. This is a color graphic. Reproduction in grayscale may misrepresent the data.

- Non-Participating Receptor
- PV Panel
- Receptor Viewshed



www.edrdpc.com





## South Ripley Solar Project

Town of Ripley, Chautauqua County, New York

Figure 1. Receptor Viewsheds

Notes: 1. Basemap: USDA NAIP "2019 New York 60cm" orthoimagery map service. 2. This map was generated in ArcMap on July 27, 2021. 3. This is a color graphic. Reproduction in grayscale may misrepresent the data.

- Non-Participating Receptor
- PV Panel
- Receptor Viewshed





## South Ripley Solar Project

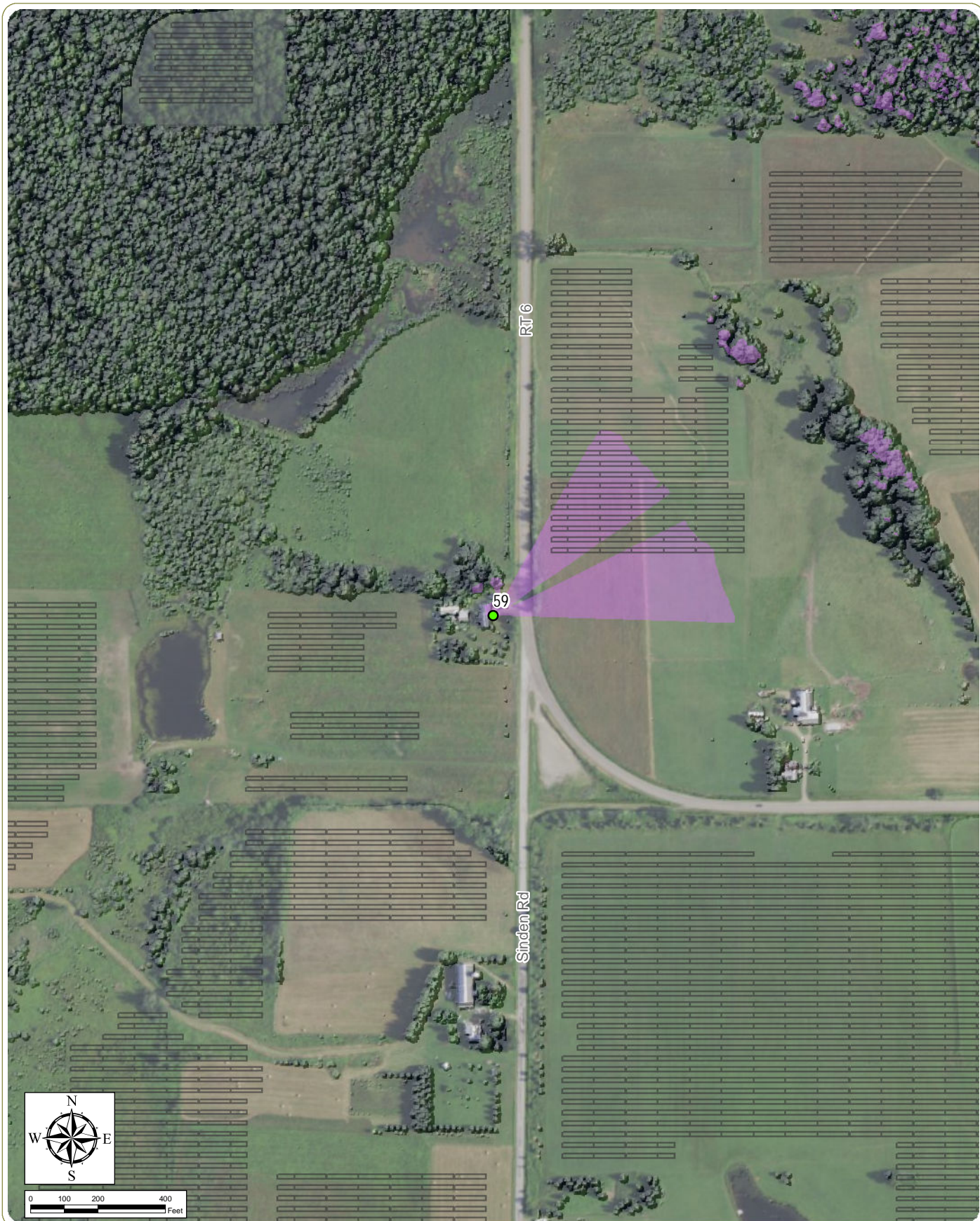
Town of Ripley, Chautauqua County, New York

Figure 1. Receptor Viewsheds

Notes: 1. Basemap: USDA NAIP "2019 New York 60cm" orthoimagery map service. 2. This map was generated in ArcMap on July 27, 2021. 3. This is a color graphic. Reproduction in grayscale may misrepresent the data.

- Non-Participating Receptor
- PV Panel
- Receptor Viewshed





## South Ripley Solar Project

Town of Ripley, Chautauqua County, New York

Figure 1. Receptor Viewsheds

Notes: 1. Basemap: USDA NAIP "2019 New York 60cm" orthoimagery map service. 2. This map was generated in ArcMap on July 27, 2021. 3. This is a color graphic. Reproduction in grayscale may misrepresent the data.

- Participating Receptor
- PV Panel
- Receptor Viewshed





## South Ripley Solar Project

Town of Ripley, Chautauqua County, New York

Figure 1. Receptor Viewsheds

Notes: 1. Basemap:USDA NAIP "2019 New York 60cm" orthoimagery map service. 2. This map was generated in ArcMap on July 27, 2021. 3. This is a color graphic. Reproduction in grayscale may misrepresent the data.

- Participating Receptor
- PV Panel
- Receptor Viewshed





## South Ripley Solar Project

Town of Ripley, Chautauqua County, New York

Figure 1. Receptor Viewsheds

Notes: 1. Basemap:USDA NAIP "2019 New York 60cm" orthoimagery map service. 2. This map was generated in ArcMap on July 27, 2021. 3. This is a color graphic. Reproduction in grayscale may misrepresent the data.

- Participating Receptor
- PV Panel
- Receptor Viewshed





## South Ripley Solar Project

Town of Ripley, Chautauqua County, New York

Figure 1. Receptor Viewsheds

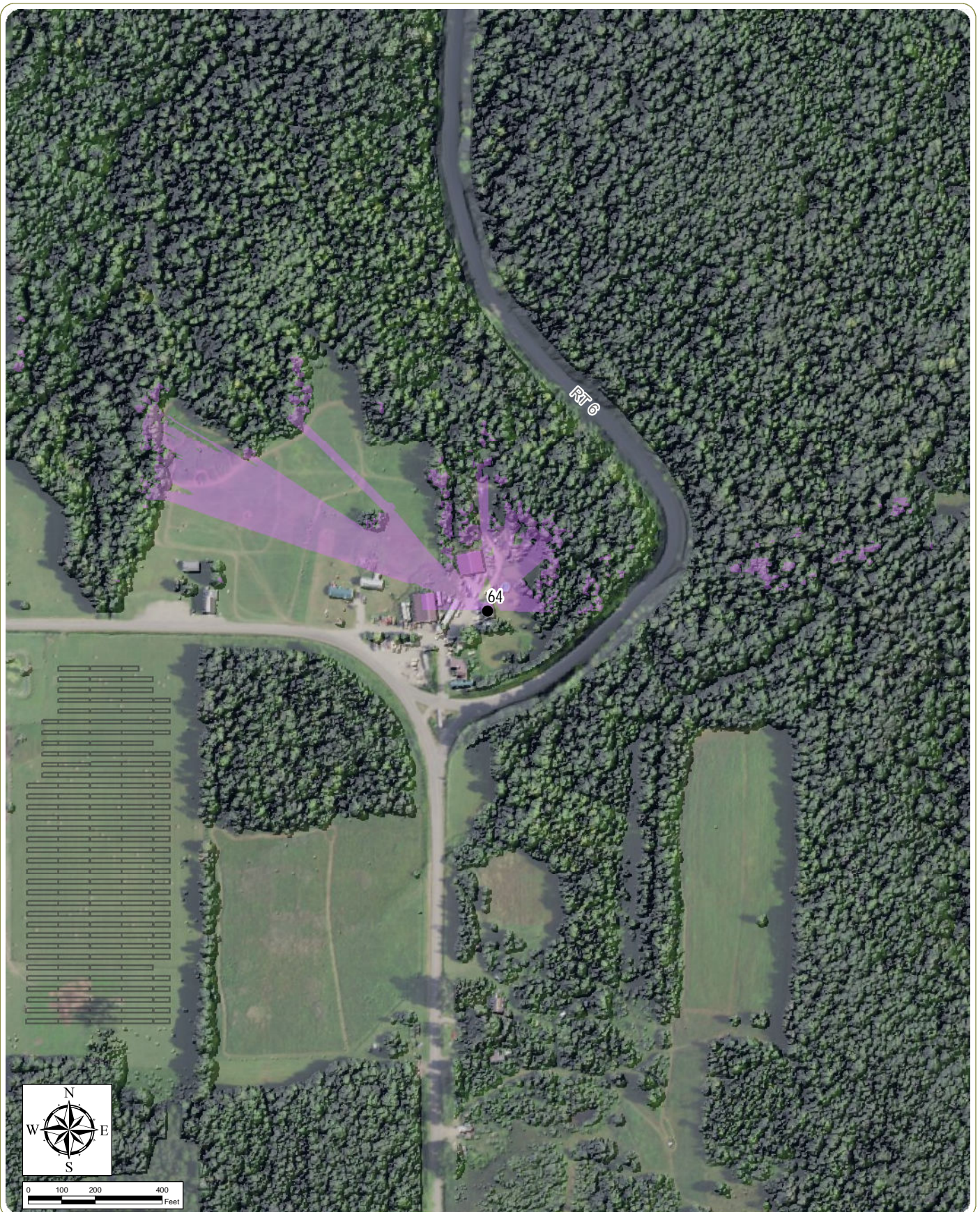
Notes: 1. Basemap:USDA NAIP "2019 New York 60cm" orthoimagery map service. 2. This map was generated in ArcMap on July 27, 2021. 3. This is a color graphic. Reproduction in grayscale may misrepresent the data.

- Non-Participating Receptor
- PV Panel
- Receptor Viewshed



www.edrdpc.com





## South Ripley Solar Project

Town of Ripley, Chautauqua County, New York

Figure 1. Receptor Viewsheds

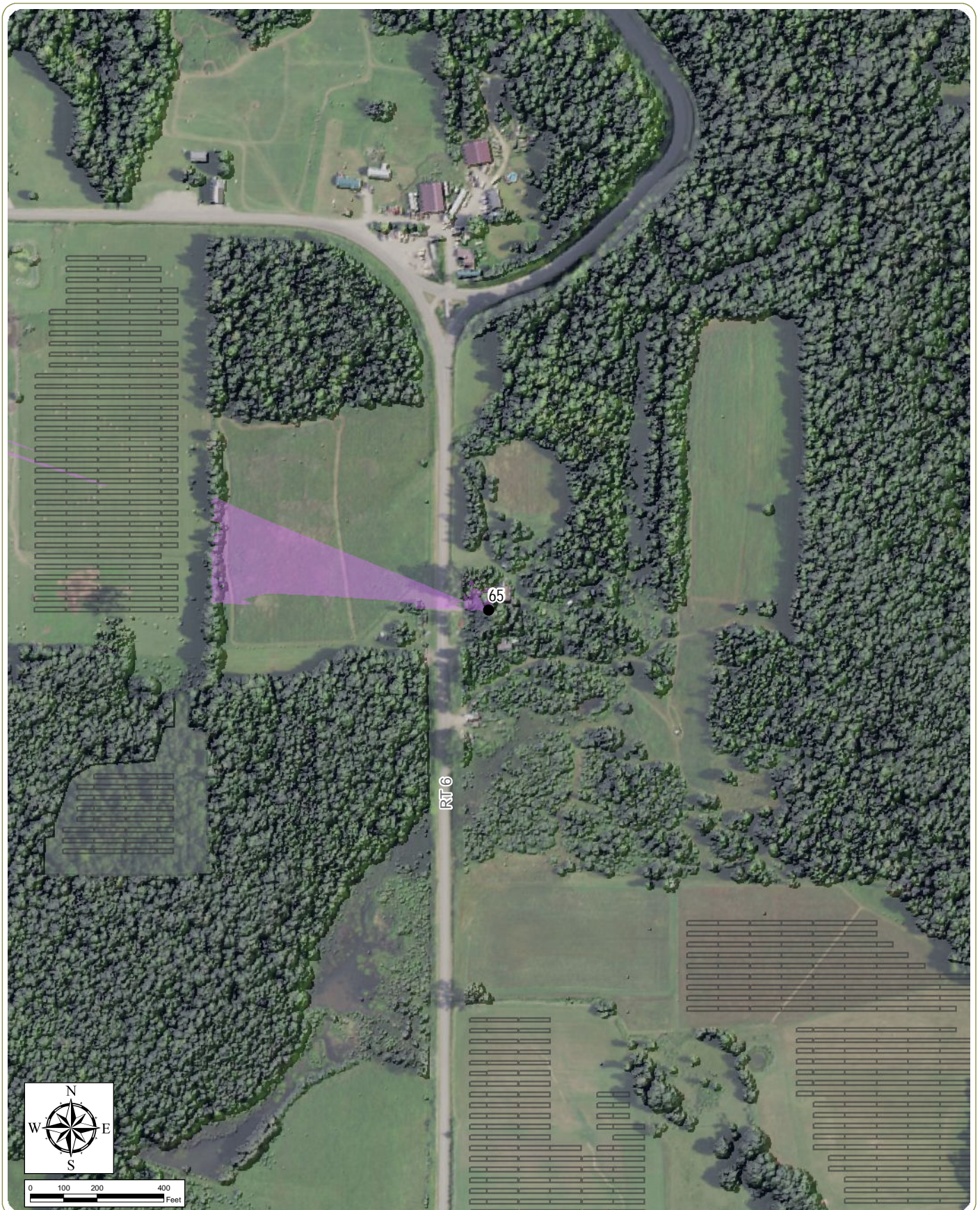
Notes: 1. Basemap:USDA NAIP "2019 New York 60cm" orthoimagery map service. 2. This map was generated in ArcMap on July 27, 2021. 3. This is a color graphic. Reproduction in grayscale may misrepresent the data.

- Non-Participating Receptor
- PV Panel
- Receptor Viewshed



www.edrdpc.com





## South Ripley Solar Project

Town of Ripley, Chautauqua County, New York

Figure 1. Receptor Viewsheds

Notes: 1. Basemap:USDA NAIP "2019 New York 60cm" orthoimagery map service. 2. This map was generated in ArcMap on July 27, 2021. 3. This is a color graphic. Reproduction in grayscale may misrepresent the data.

- Non-Participating Receptor
- PV Panel
- Receptor Viewshed





## South Ripley Solar Project

Town of Ripley, Chautauqua County, New York

Figure 1. Receptor Viewsheds

Notes: 1. Basemap:USDA NAIP "2019 New York 60cm" orthoimagery map service. 2. This map was generated in ArcMap on July 27, 2021. 3. This is a color graphic. Reproduction in grayscale may misrepresent the data.

- Participating Receptor
- PV Panel
- Receptor Viewshed







## South Ripley Solar Project

Town of Ripley, Chautauqua County, New York

Figure 1. Receptor Viewsheds

Notes: 1. Basemap:USDA NAIP "2019 New York 60cm" orthoimagery map service. 2. This map was generated in ArcMap on July 27, 2021. 3. This is a color graphic. Reproduction in grayscale may misrepresent the data.

- Non-Participating Receptor
- PV Panel
- Receptor Viewshed





## South Ripley Solar Project

Town of Ripley, Chautauqua County, New York

Figure 1. Receptor Viewsheds

Notes: 1. Basemap: USDA NAIP "2019 New York 60cm" orthoimagery map service. 2. This map was generated in ArcMap on July 27, 2021. 3. This is a color graphic. Reproduction in grayscale may misrepresent the data.

- Participating Receptor
- PV Panel
- Receptor Viewshed





## South Ripley Solar Project

Town of Ripley, Chautauqua County, New York

Figure 1. Receptor Viewsheds

Notes: 1. Basemap: USDA NAIP "2019 New York 60cm" orthoimagery map service. 2. This map was generated in ArcMap on July 27, 2021. 3. This is a color graphic. Reproduction in grayscale may misrepresent the data.

- Non-Participating Receptor
- PV Panel
- Receptor Viewshed





## South Ripley Solar Project

Town of Ripley, Chautauqua County, New York

Figure 1. Receptor Viewsheds

Notes: 1. Basemap:USDA NAIP "2019 New York 60cm" orthoimagery map service. 2. This map was generated in ArcMap on July 27, 2021. 3. This is a color graphic. Reproduction in grayscale may misrepresent the data.

- Non-Participating Receptor
- PV Panel
- Receptor Viewshed



www.edrdpc.com





## South Ripley Solar Project

Town of Ripley, Chautauqua County, New York

Figure 1. Receptor Viewsheds

Notes: 1. Basemap: USDA NAIP "2019 New York 60cm" orthoimagery map service. 2. This map was generated in ArcMap on July 27, 2021. 3. This is a color graphic. Reproduction in grayscale may misrepresent the data.

- Non-Participating Receptor
- PV Panel
- Receptor Viewshed



www.edrdpc.com





## South Ripley Solar Project

Town of Ripley, Chautauqua County, New York

Figure 1. Receptor Viewsheds

Notes: 1. Basemap:USDA NAIP "2019 New York 60cm" orthoimagery map service. 2. This map was generated in ArcMap on July 27, 2021. 3. This is a color graphic. Reproduction in grayscale may misrepresent the data.

- Non-Participating Receptor
- PV Panel
- Receptor Viewshed





## South Ripley Solar Project

Town of Ripley, Chautauqua County, New York

Figure 1. Receptor Viewsheds

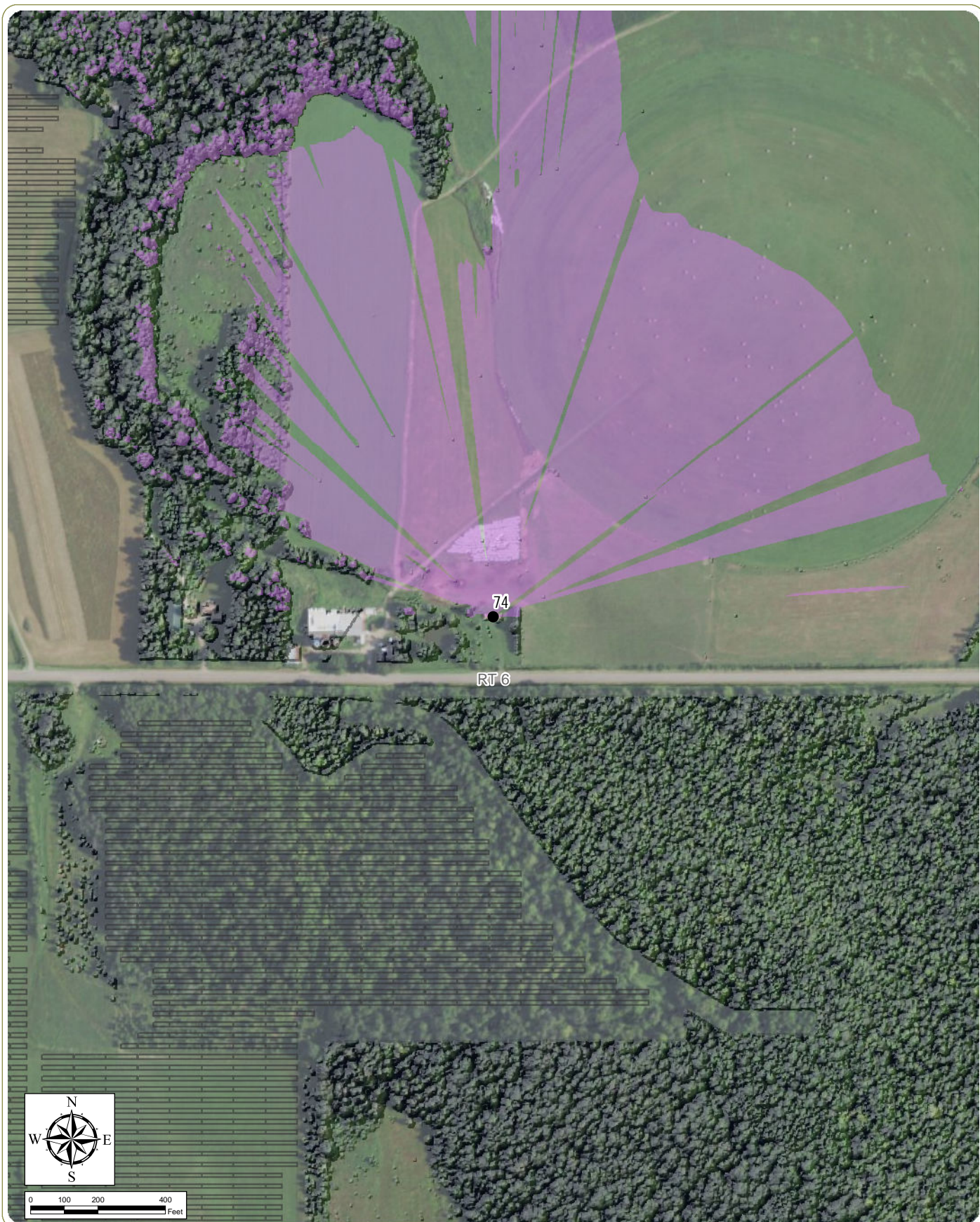
Notes: 1. Basemap: USDA NAIP "2019 New York 60cm" orthoimagery map service. 2. This map was generated in ArcMap on July 27, 2021. 3. This is a color graphic. Reproduction in grayscale may misrepresent the data.

- Non-Participating Receptor
- PV Panel
- Receptor Viewshed



www.edrdpc.com





## South Ripley Solar Project

Town of Ripley, Chautauqua County, New York

Figure 1. Receptor Viewsheds

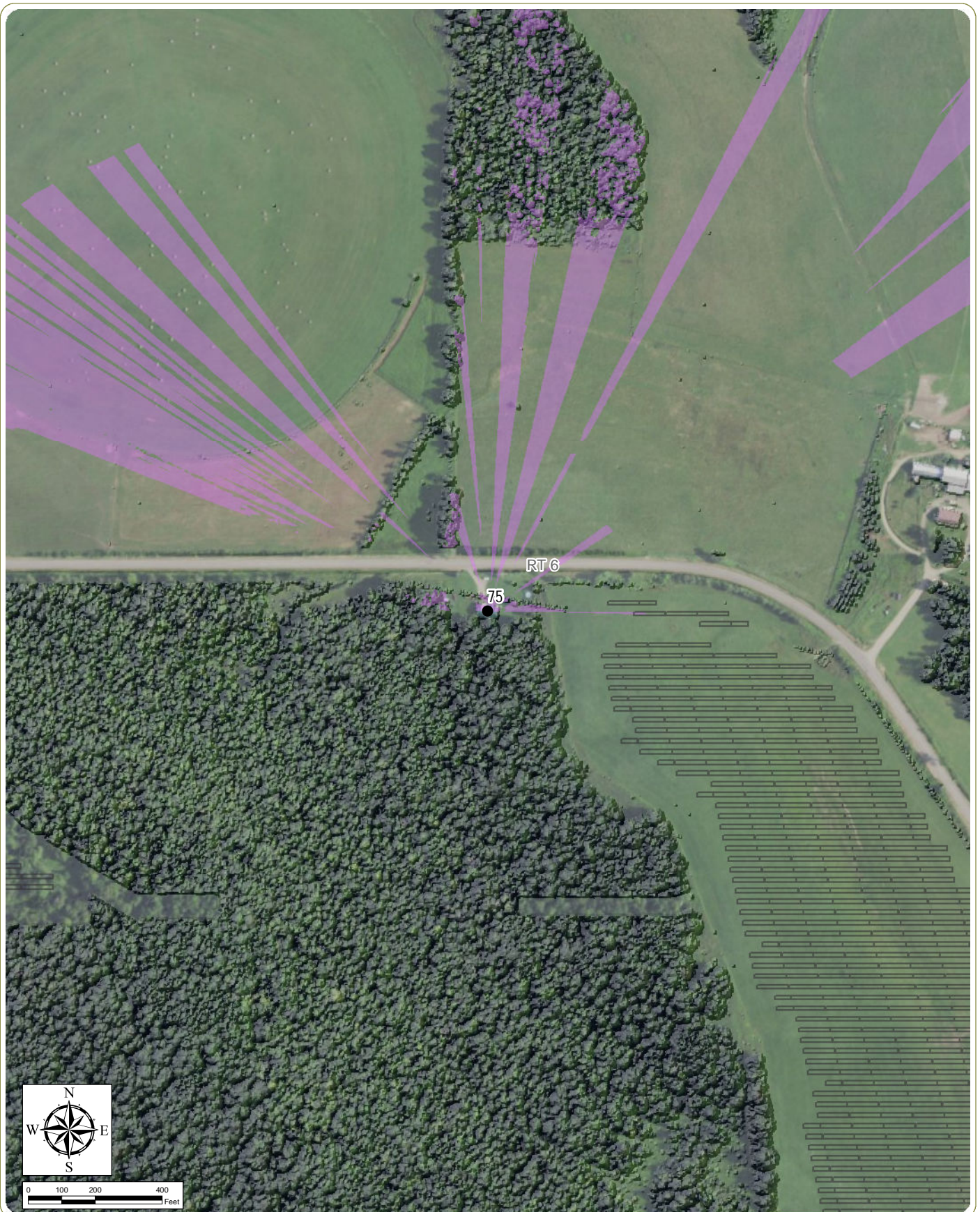
Notes: 1. Basemap:USDA NAIP "2019 New York 60cm" orthoimagery map service. 2. This map was generated in ArcMap on July 27, 2021. 3. This is a color graphic. Reproduction in grayscale may misrepresent the data.

- Non-Participating Receptor
- PV Panel
- Receptor Viewshed



www.edrdpc.com





# South Ripley Solar Project Town of Ripley, Chautauqua County, New York

Figure 1. Receptor Viewsheds

Notes: 1. Basemap:USDA NAIP "2019 New York 60cm" orthoimagery map service. 2. This map was generated in ArcMap on July 27, 2021. 3. This is a color graphic. Reproduction in grayscale may misrepresent the data.

- Non-Participating Receptor
- PV Panel
- Receptor Viewshed





## South Ripley Solar Project

Town of Ripley, Chautauqua County, New York

Figure 1. Receptor Viewsheds

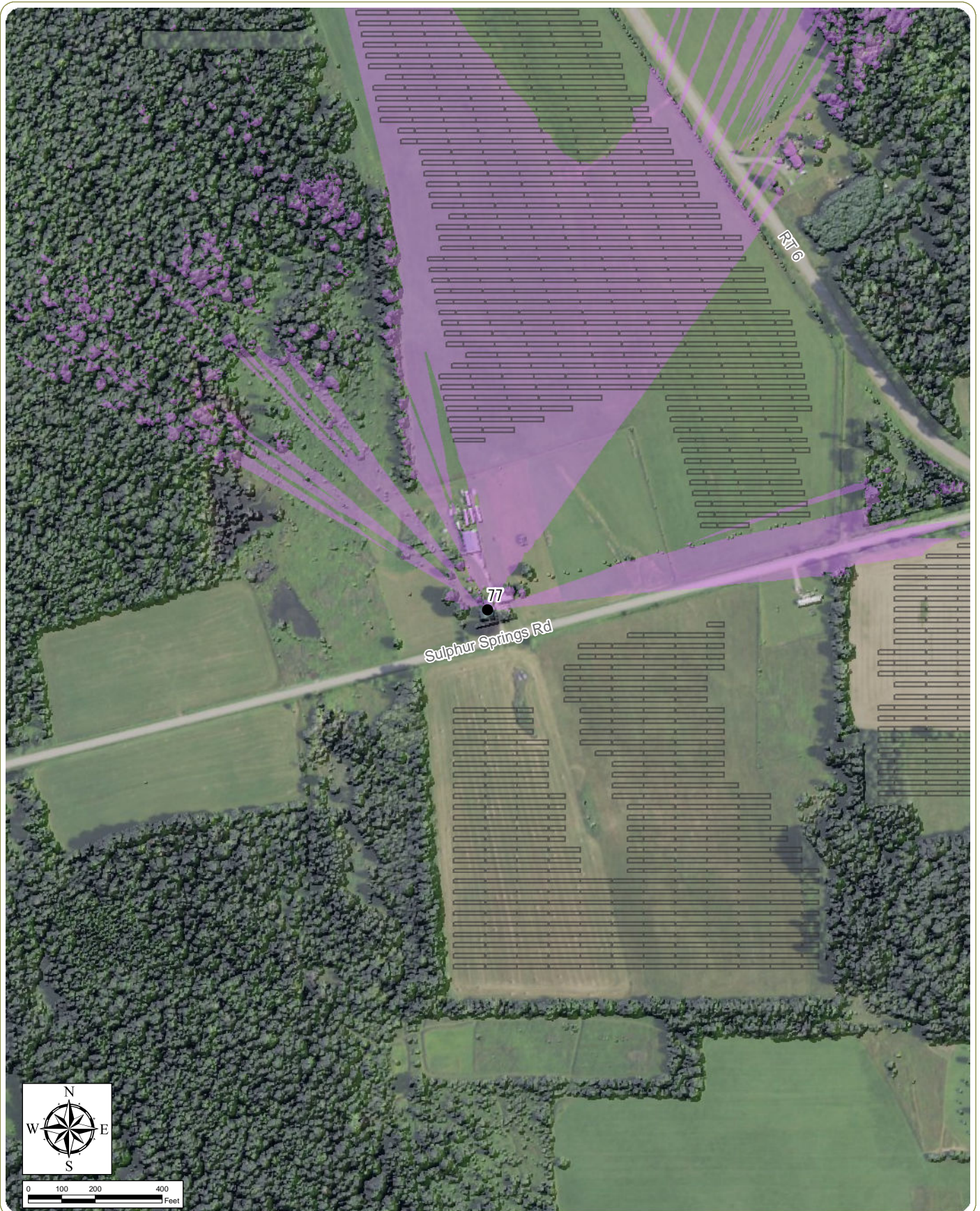
Notes: 1. Basemap: USDA NAIP "2019 New York 60cm" orthoimagery map service. 2. This map was generated in ArcMap on July 27, 2021. 3. This is a color graphic. Reproduction in grayscale may misrepresent the data.

- Non-Participating Receptor
- PV Panel
- Receptor Viewshed



www.edrdpc.com





## South Ripley Solar Project

Town of Ripley, Chautauqua County, New York

Figure 1. Receptor Viewsheds

Notes: 1. Basemap:USDA NAIP "2019 New York 60cm" orthoimagery map service. 2. This map was generated in ArcMap on July 27, 2021. 3. This is a color graphic. Reproduction in grayscale may misrepresent the data.

- Non-Participating Receptor
- PV Panel
- Receptor Viewshed



www.edrdpc.com





## South Ripley Solar Project

Town of Ripley, Chautauqua County, New York

Figure 1. Receptor Viewsheds

Notes: 1. Basemap:USDA NAIP "2019 New York 60cm" orthoimagery map service. 2. This map was generated in ArcMap on July 27, 2021. 3. This is a color graphic. Reproduction in grayscale may misrepresent the data.

- Participating Receptor
- PV Panel
- Receptor Viewshed





## South Ripley Solar Project

Town of Ripley, Chautauqua County, New York

Figure 1. Receptor Viewsheds

Notes: 1. Basemap:USDA NAIP "2019 New York 60cm" orthoimagery map service. 2. This map was generated in ArcMap on July 27, 2021. 3. This is a color graphic. Reproduction in grayscale may misrepresent the data.

- Non-Participating Receptor
- PV Panel
- Receptor Viewshed



www.edrdpc.com





## South Ripley Solar Project

Town of Ripley, Chautauqua County, New York

Figure 1. Receptor Viewsheds

Notes: 1. Basemap: USDA NAIP "2019 New York 60cm" orthoimagery map service. 2. This map was generated in ArcMap on July 27, 2021. 3. This is a color graphic. Reproduction in grayscale may misrepresent the data.

- Participating Receptor
- PV Panel
- Receptor Viewshed





## South Ripley Solar Project

Town of Ripley, Chautauqua County, New York

Figure 1. Receptor Viewsheds

Notes: 1. Basemap:USDA NAIP "2019 New York 60cm" orthoimagery map service. 2. This map was generated in ArcMap on July 27, 2021. 3. This is a color graphic. Reproduction in grayscale may misrepresent the data.

- Non-Participating Receptor
- PV Panel
- Receptor Viewshed





## South Ripley Solar Project

Town of Ripley, Chautauqua County, New York

Figure 1. Receptor Viewsheds

Notes: 1. Basemap:USDA NAIP "2019 New York 60cm" orthoimagery map service. 2. This map was generated in ArcMap on July 27, 2021. 3. This is a color graphic. Reproduction in grayscale may misrepresent the data.

- Non-Participating Receptor
- PV Panel
- Receptor Viewshed





## South Ripley Solar Project

Town of Ripley, Chautauqua County, New York

Figure 1. Receptor Viewsheds

Notes: 1. Basemap:USDA NAIP "2019 New York 60cm" orthoimagery map service. 2. This map was generated in ArcMap on July 27, 2021. 3. This is a color graphic. Reproduction in grayscale may misrepresent the data.

- Non-Participating Receptor
- PV Panel
- Receptor Viewshed



www.edrdpc.com





## South Ripley Solar Project

Town of Ripley, Chautauqua County, New York

Figure 1. Receptor Viewsheds

Notes: 1. Basemap:USDA NAIP "2019 New York 60cm" orthoimagery map service. 2. This map was generated in ArcMap on July 27, 2021. 3. This is a color graphic. Reproduction in grayscale may misrepresent the data.

- Non-Participating Receptor
- PV Panel
- Receptor Viewshed





## South Ripley Solar Project

Town of Ripley, Chautauqua County, New York

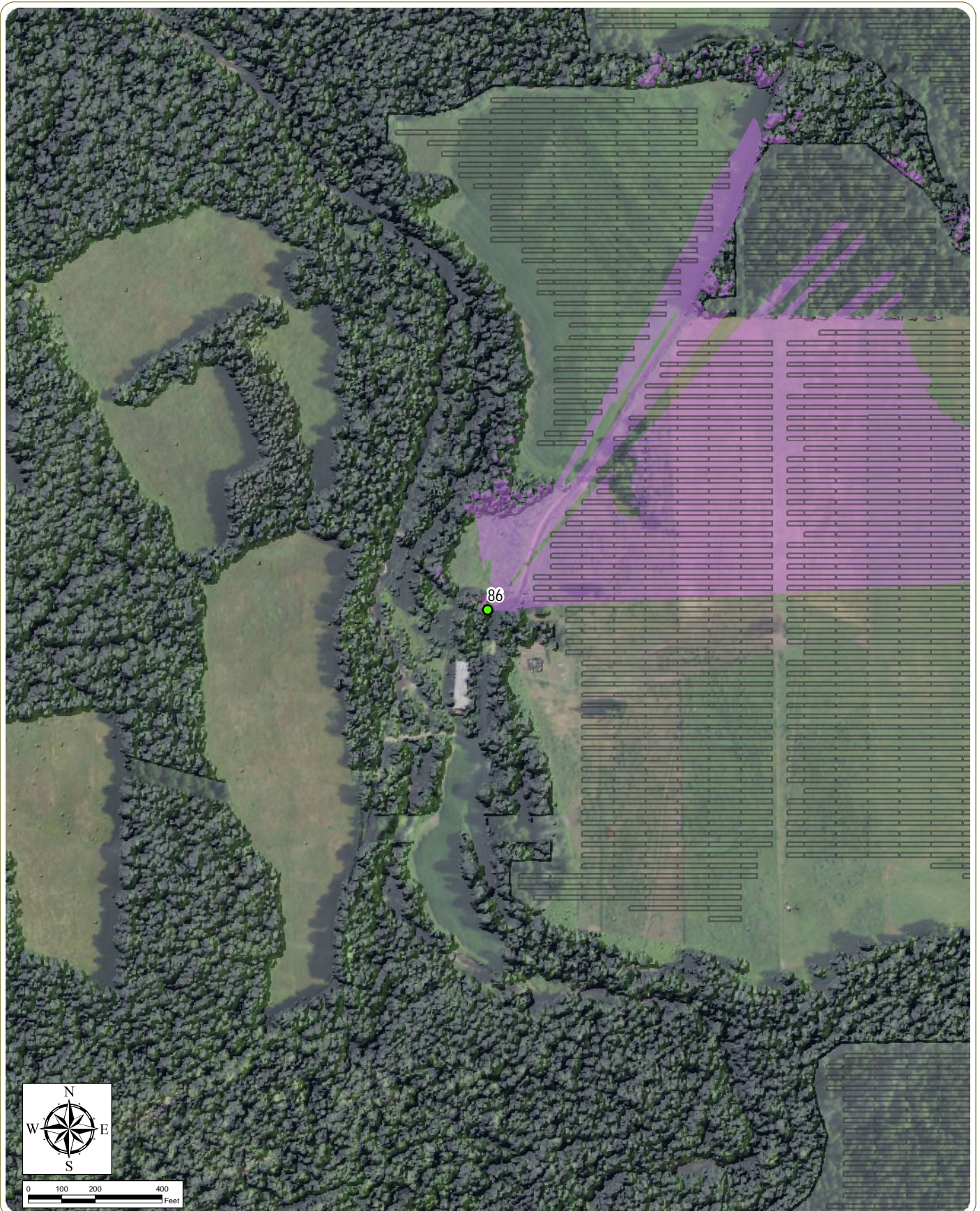
Figure 1. Receptor Viewsheds

Notes: 1. Basemap: USDA NAIP "2019 New York 60cm" orthoimagery map service. 2. This map was generated in ArcMap on July 27, 2021. 3. This is a color graphic. Reproduction in grayscale may misrepresent the data.

- Non-Participating Receptor
- PV Panel
- Receptor Viewshed







## South Ripley Solar Project

Town of Ripley, Chautauqua County, New York

Figure 1. Receptor Viewsheds

Notes: 1. Basemap: USDA NAIP "2019 New York 60cm" orthoimagery map service. 2. This map was generated in ArcMap on July 27, 2021. 3. This is a color graphic. Reproduction in grayscale may misrepresent the data.

- Participating Receptor
- PV Panel
- Receptor Viewshed





## South Ripley Solar Project

Town of Ripley, Chautauqua County, New York

Figure 1. Receptor Viewsheds

Notes: 1. Basemap: USDA NAIP "2019 New York 60cm" orthoimagery map service. 2. This map was generated in ArcMap on July 27, 2021. 3. This is a color graphic. Reproduction in grayscale may misrepresent the data.

- Non-Participating Receptor
- PV Panel
- Receptor Viewshed



www.edrdpc.com





## South Ripley Solar Project

Town of Ripley, Chautauqua County, New York

Figure 1. Receptor Viewsheds

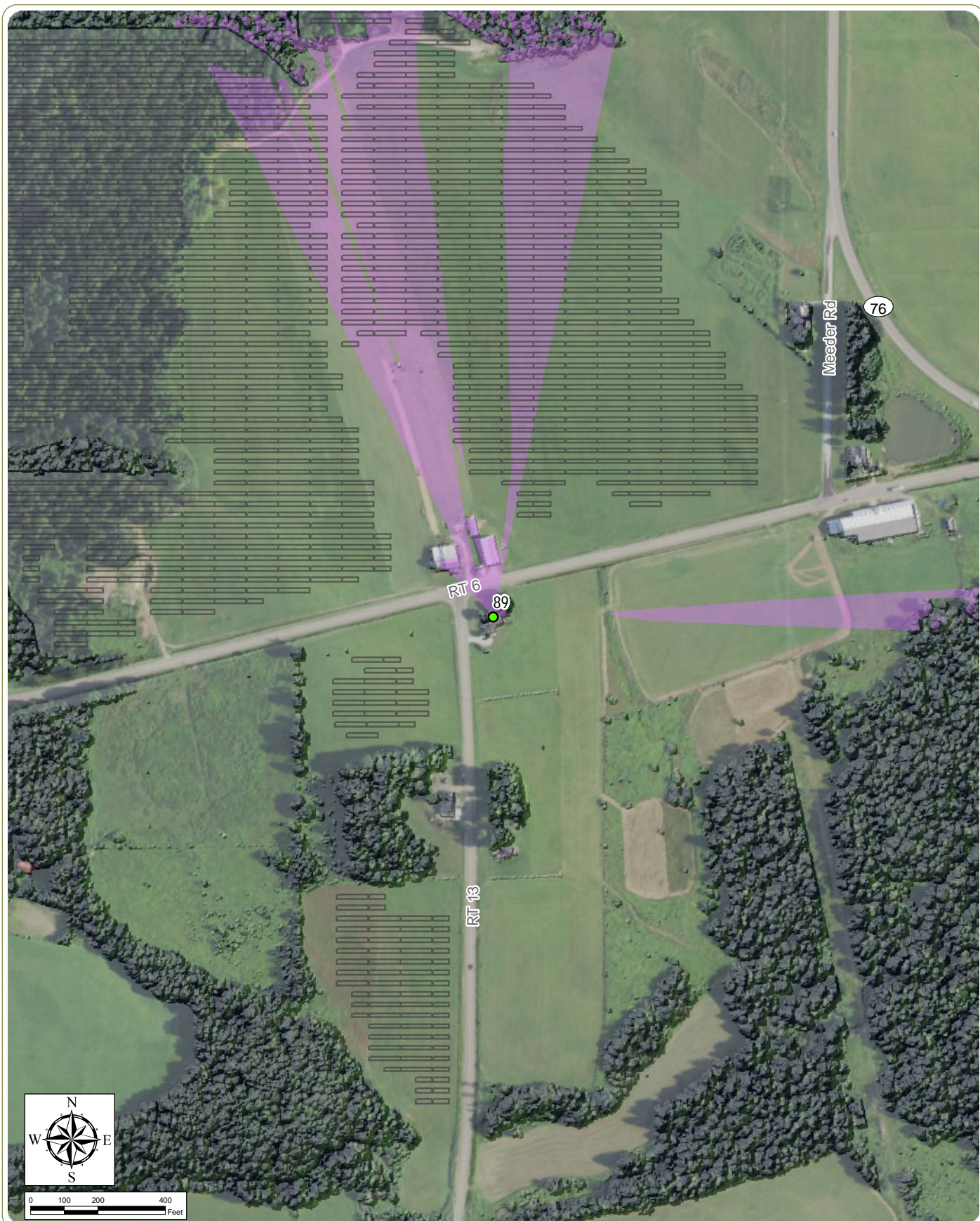
Notes: 1. Basemap:USDA NAIP "2019 New York 60cm" orthoimagery map service. 2. This map was generated in ArcMap on July 27, 2021. 3. This is a color graphic. Reproduction in grayscale may misrepresent the data.

- Participating Receptor
- PV Panel
- Receptor Viewshed



www.edrdpc.com





## South Ripley Solar Project

Town of Ripley, Chautauqua County, New York

Figure 1. Receptor Viewsheds

Notes: 1. Basemap: USDA NAIP "2019 New York 60cm" orthoimagery map service. 2. This map was generated in ArcMap on July 27, 2021. 3. This is a color graphic. Reproduction in grayscale may misrepresent the data.

- Participating Receptor
- PV Panel
- Receptor Viewshed





## South Ripley Solar Project

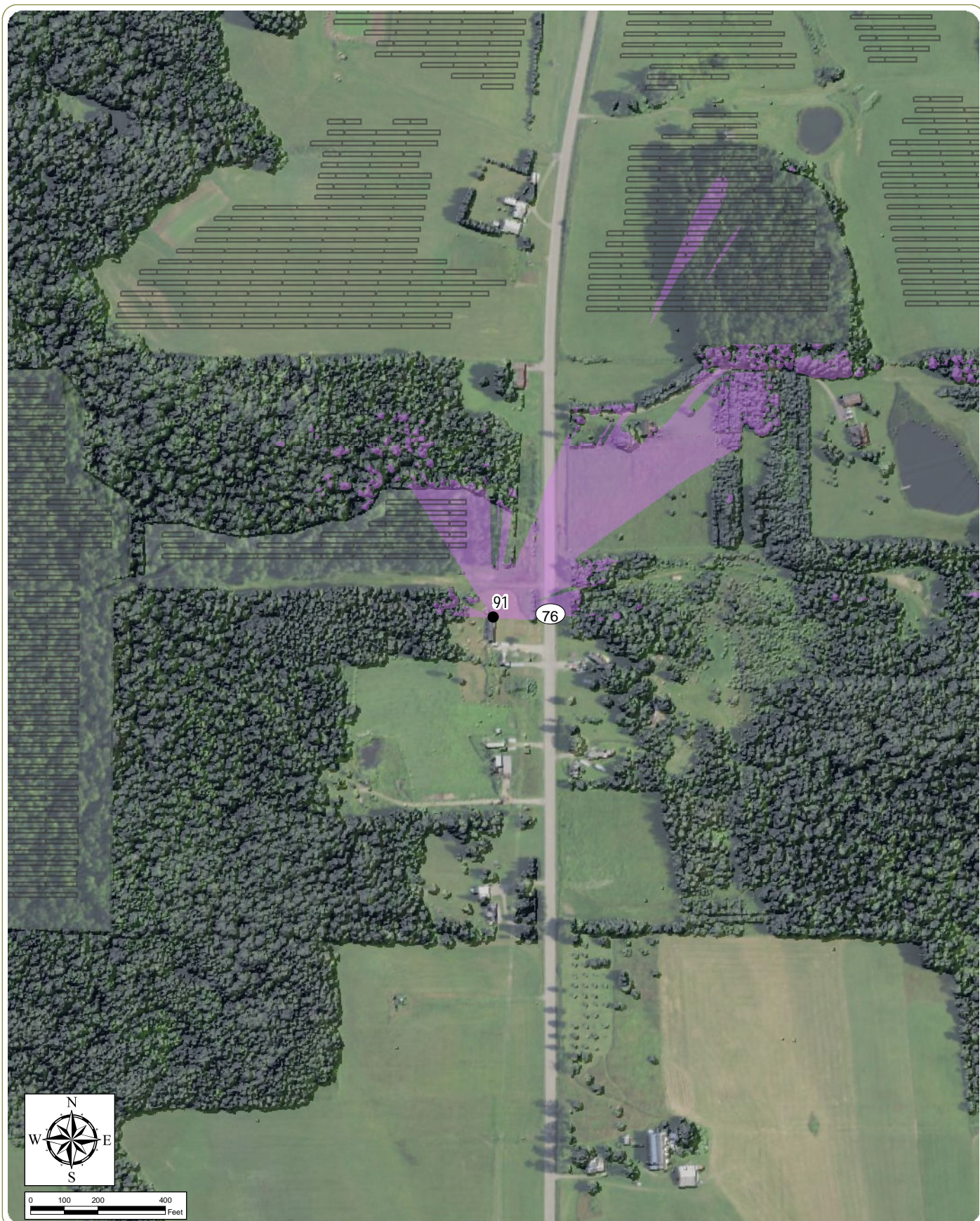
Town of Ripley, Chautauqua County, New York

Figure 1. Receptor Viewsheds

Notes: 1. Basemap:USDA NAIP "2019 New York 60cm" orthoimagery map service. 2. This map was generated in ArcMap on July 27, 2021. 3. This is a color graphic. Reproduction in grayscale may misrepresent the data.

- Participating Receptor
- PV Panel
- Receptor Viewshed





## South Ripley Solar Project

Town of Ripley, Chautauqua County, New York

Figure 1. Receptor Viewsheds

Notes: 1. Basemap:USDA NAIP "2019 New York 60cm" orthoimagery map service. 2. This map was generated in ArcMap on July 27, 2021. 3. This is a color graphic. Reproduction in grayscale may misrepresent the data.

- Non-Participating Receptor
- PV Panel
- Receptor Viewshed



www.edrdpc.com





## South Ripley Solar Project

Town of Ripley, Chautauqua County, New York

Figure 1. Receptor Viewsheds

Notes: 1. Basemap:USDA NAIP "2019 New York 60cm" orthoimagery map service. 2. This map was generated in ArcMap on July 27, 2021. 3. This is a color graphic. Reproduction in grayscale may misrepresent the data.

- Non-Participating Receptor
- PV Panel
- Receptor Viewshed



[www.edrdpc.com](http://www.edrdpc.com)