

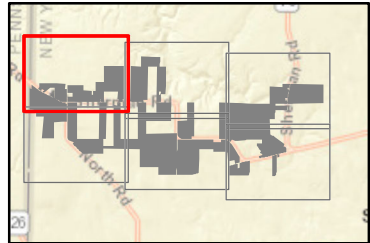
South Ripley Solar Project

Town of Ripley, Chautauqua County, New York

Section 94-c Application
Matter No. 21-00750

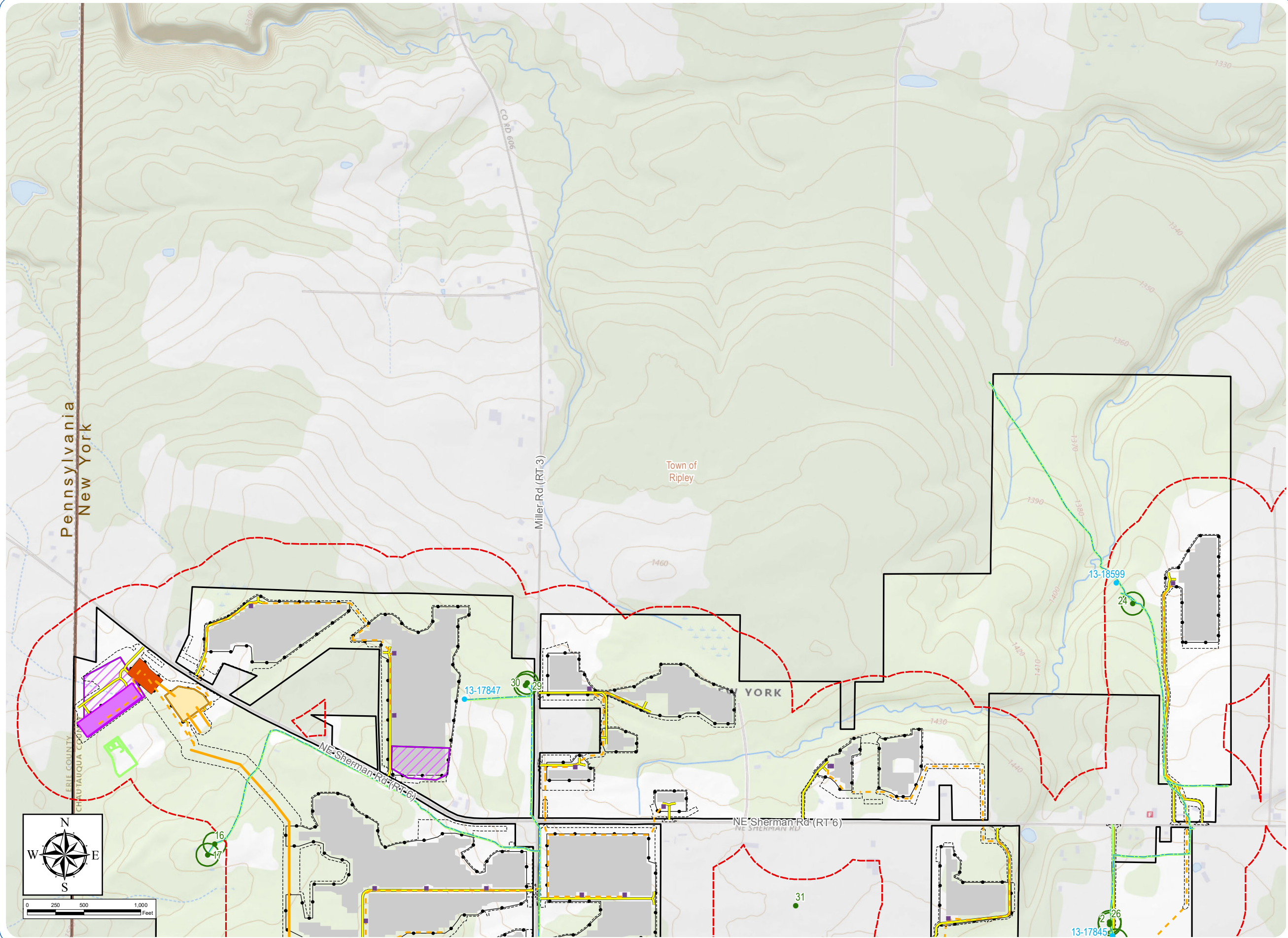
Figure 3-12: Oil and Gas Well Setbacks

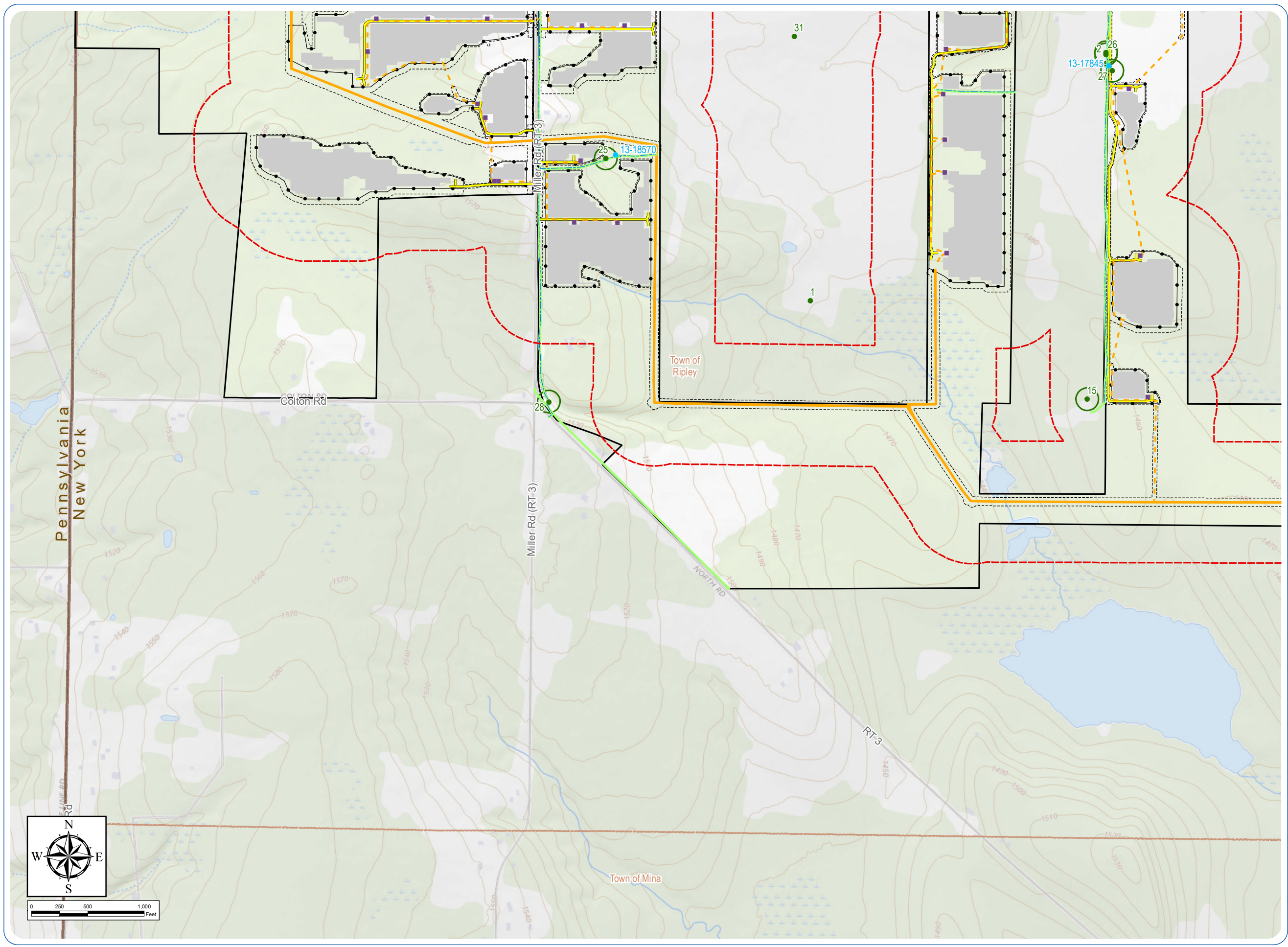
- Field Verified Oil and Gas Well
- NYSDEC Mapped Oil and Gas Well
- Oil and Gas Mapped Pipeline
- Oil and Gas Well 20-foot Access
- Oil and Gas Well 100-foot Setback
- Facility Components
 - Access Road
 - Underground Collection Line
 - Overhead Collection Line
 - Inverter
 - Battery Energy Storage System
 - Collection Substation
 - POI Substation
 - PV Panel Area
 - Fenceline
 - Laydown Yard
 - Limit of Construction Activity
 - Facility Site
 - Oil and Gas Well Study Area



Sheet 1 of 6

Notes: 1. Basemap: ESRI ArcGIS Online "USGS Topo" map service. 2. This map was generated in ArcMap on April 7, 2022. 3. This is a color graphic. Reproduction in grayscale may misrepresent the data.





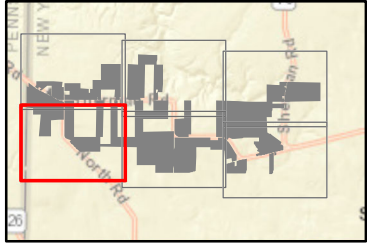
South Ripley Solar Project

Town of Ripley, Chautauqua County, New York

Section 94-c Application
Matter No. 21-00750

Figure 3-12: Oil and Gas Well Setbacks

- Field Verified Oil and Gas Well
- NYSDEC Mapped Oil and Gas Well
- Oil and Gas Mapped Pipeline
- Oil and Gas Well 20-foot Access
- Oil and Gas Well 100-foot Setback
- Facility Components
 - Access Road
 - Underground Collection Line
 - Overhead Collection Line
 - Inverter
 - PV Panel Area
 - Fenceline
 - Limit of Construction Activity
 - Facility Site
 - Oil and Gas Well Study Area



Sheet 2 of 6

Notes: 1. Basemap: ESRI ArcGIS Online "USGS Topo" map service. 2. This map was generated in ArcMap on April 7, 2022. 3. This is a color graphic. Reproduction in grayscale may misrepresent the data.



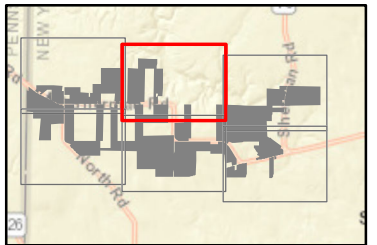
South Ripley Solar Project

Town of Ripley, Chautauqua County, New York

Section 94-c Application
Matter No. 21-00750

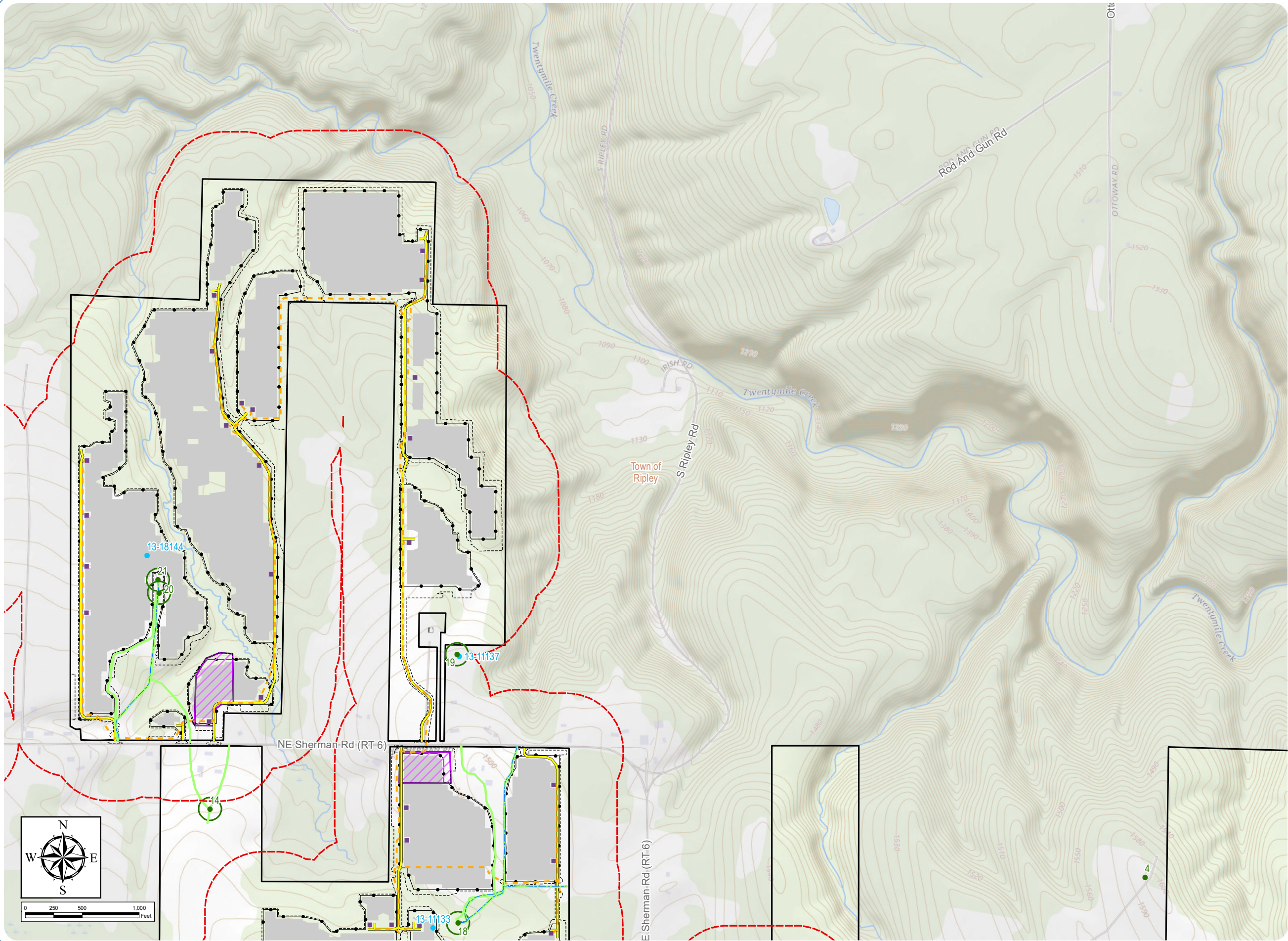
Figure 3-12: Oil and Gas Well Setbacks

- Field Verified Oil and Gas Well
- NYSDEC Mapped Oil and Gas Well
- Oil and Gas Mapped Pipeline
- Oil and Gas Well 20-foot Access
- Oil and Gas Well 100-foot Setback
- Facility Components
 - Access Road
 - Underground Collection Line
 - Inverter
 - PV Panel Area
 - Fenceline
 - Laydown Yard
 - Limit of Construction Activity
 - Facility Site
 - Oil and Gas Well Study Area



Sheet 3 of 6

Notes: 1. Basemap: ESRI ArcGIS Online "USGS Topo" map service. 2. This map was generated in ArcMap on April 7, 2022. 3. This is a color graphic. Reproduction in grayscale may misrepresent the data.



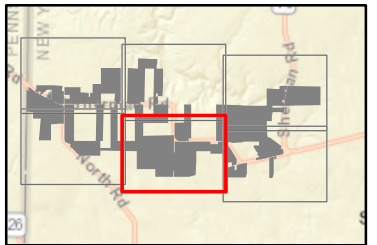
South Ripley Solar Project

Town of Ripley, Chautauqua County, New York

Section 94-c Application
Matter No. 21-00750

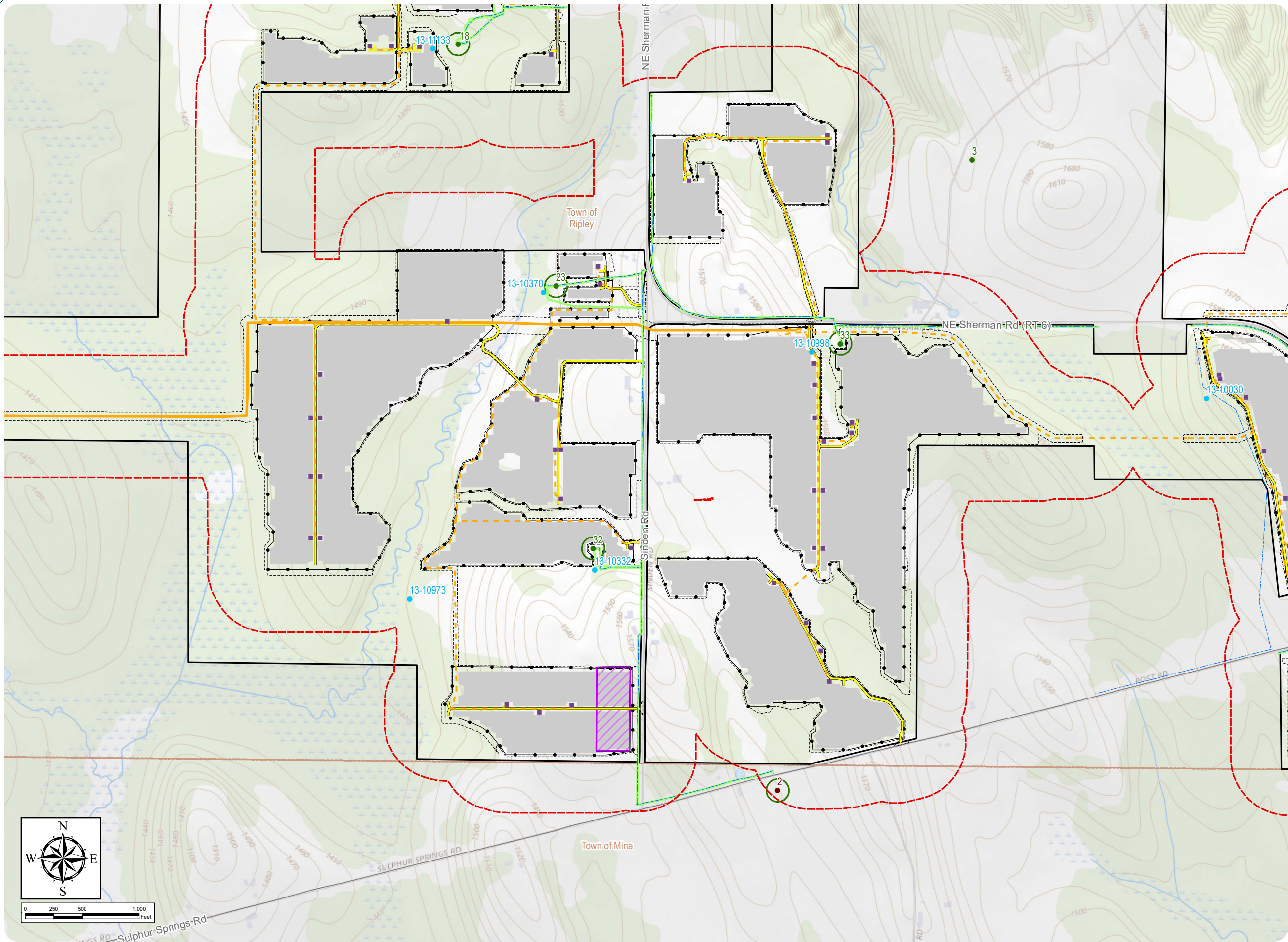
Figure 3-12: Oil and Gas Well Setbacks

- Field Verified Oil and Gas Well
- NYSDEC Mapped Oil and Gas Well
- Empire Energy LLC Mapped Well
- Oil and Gas Mapped Pipeline
- Oil and Gas Well 20-foot Access
- Oil and Gas Well 100-foot Setback
- Facility Components
 - Access Road
 - Underground Collection Line
 - Overhead Collection Line
 - Inverter
 - PV Panel Area
 - Fenceline
 - Laydown Yard
 - Limit of Construction Activity
 - Facility Site
 - Oil and Gas Well Study Area



Sheet 4 of 6

Notes: 1. Basemap: ESRI ArcGIS Online "USGS Topo" map service. 2. This map was generated in ArcMap on April 7, 2022. 3. This is a color graphic. Reproduction in grayscale may misrepresent the data.



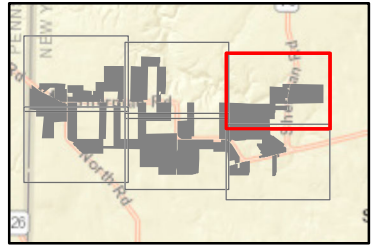
South Ripley Solar Project

Town of Ripley, Chautauqua County, New York

Section 94-c Application
Matter No. 21-00750

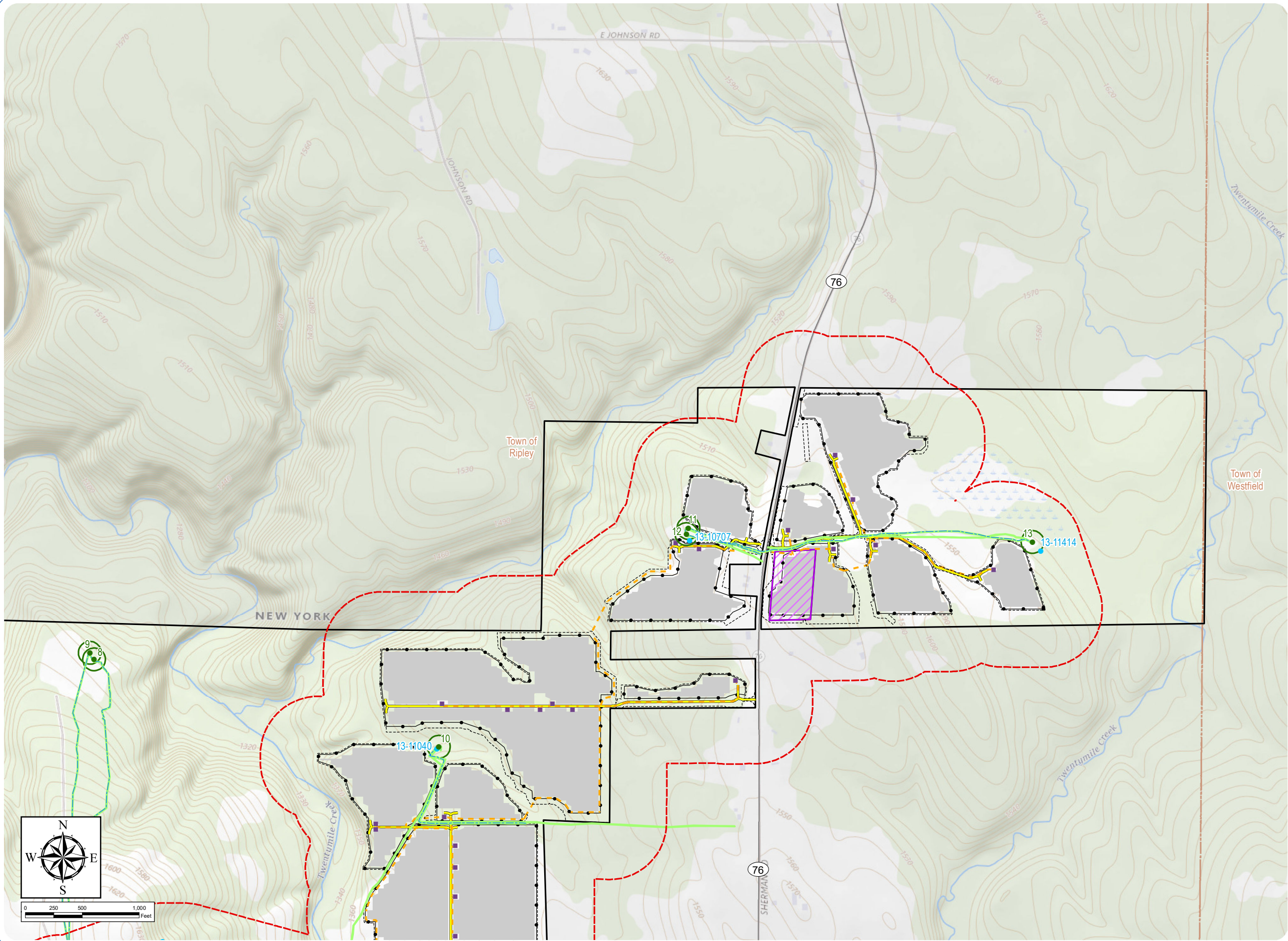
Figure 3-12: Oil and Gas Well Setbacks

- Field Verified Oil and Gas Well
- NYSDEC Mapped Oil and Gas Well
- Oil and Gas Mapped Pipeline
- Oil and Gas Well 20-foot Access
- Oil and Gas Well 100-foot Setback
- Facility Components
 - Access Road
 - Underground Collection Line
 - Inverter
 - PV Panel Area
 - Fenceline
 - Laydown Yard
 - Limit of Construction Activity
 - Facility Site
 - Oil and Gas Well Study Area



Sheet 5 of 6

Notes: 1. Basemap: ESRI ArcGIS Online "USGS Topo" map service. 2. This map was generated in ArcMap on April 7, 2022. 3. This is a color graphic. Reproduction in grayscale may misrepresent the data.



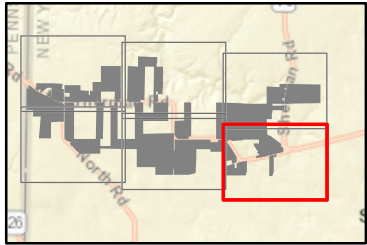
South Ripley Solar Project

Town of Ripley, Chautauqua County, New York

Section 94-c Application
Matter No. 21-00750

Figure 3-12: Oil and Gas Well Setbacks

- Field Verified Oil and Gas Well
- NYSDEC Mapped Oil and Gas Well
- Empire Energy LLC Mapped Well
- Oil and Gas Mapped Pipeline
- Oil and Gas Well 20-foot Access
- Oil and Gas Well 100-foot Setback
- Facility Components
 - Access Road
 - Underground Collection Line
 - Overhead Collection Line
 - Inverter
 - PV Panel Area
 - Fenceline
 - Laydown Yard
 - Limit of Construction Activity
 - Facility Site
 - Oil and Gas Well Study Area



Sheet 6 of 6

Notes: 1. Basemap: ESRI ArcGIS Online "USGS Topo" map service. 2. This map was generated in ArcMap on April 7, 2022. 3. This is a color graphic. Reproduction in grayscale may misrepresent the data.

