



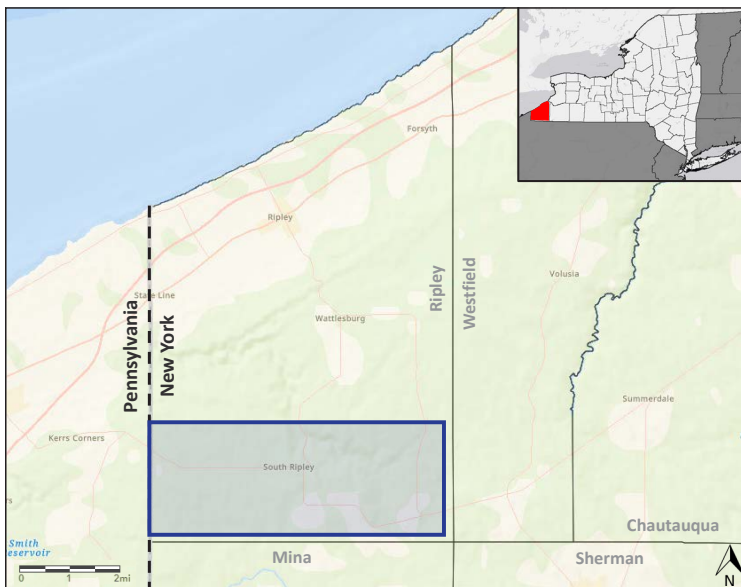
## South Ripley SOLAR PROJECT

ConnectGen is developing a large-scale solar farm in South Ripley along NE Sherman Road. ConnectGen expects to install up to 270 megawatts (MW) of solar in the area, which has the potential to power over 67,000 homes in New York State.

## Why South Ripley

ConnectGen has identified the South Ripley community for solar development because of its proximity to the existing transmission system, favorable site suitability with limited design constraints, and Chautauqua County's history of renewable energy development.

## South Ripley Project Area



**PRELIMINARY PROJECT AREA OF INTEREST**

ConnectGen expects to use approximately 2,000 acres in South Ripley for potential solar development.

## Local Benefits from the South Ripley Solar Project



Millions of dollars in increased revenue for roads, schools, public safety, and other public services to the Town of Ripley, Chautauqua County, and the local school district



Local construction jobs, revenue to local businesses, and partnerships with local community groups



Millions of dollars in payments to local landowners in the form of solar leases, easement agreements, and good neighbor agreements

# About ConnectGen

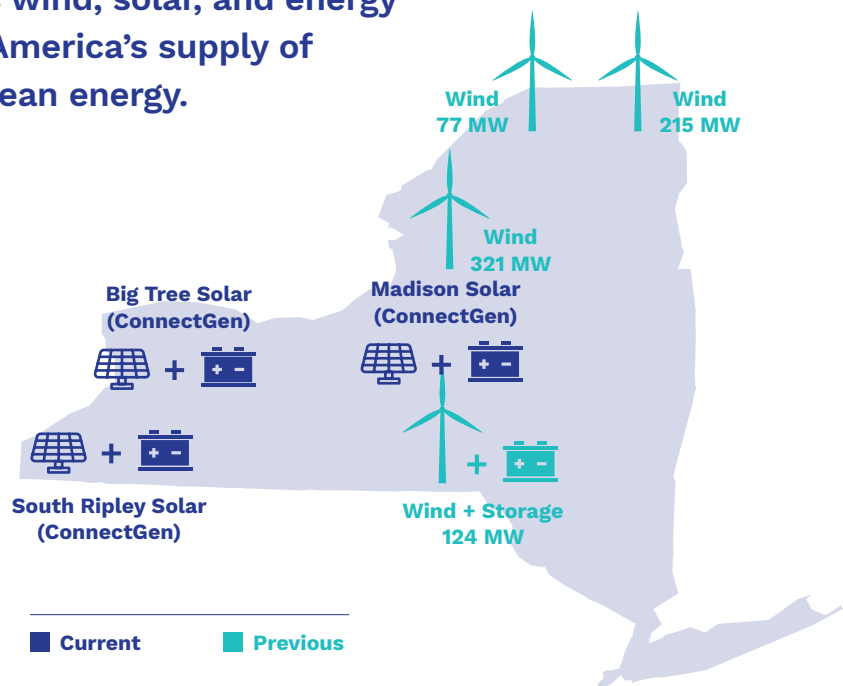
Founded in 2018, ConnectGen is a renewable energy company focused on developing best in class wind, solar, and energy storage projects that will increase America's supply of low-cost, domestically produced clean energy.

## EXPERIENCE

The ConnectGen team has previously managed the development of four utility-scale wind farms across New York, three of which are currently in operation.

## OPPORTUNITY

ConnectGen is in the process of developing three utility-scale paired solar / storage facilities in western New York while also continuing to assess additional opportunities across the state.



## LANDOWNER RELATIONSHIPS

ConnectGen's experienced development team has a track record of successfully identifying, developing and constructing renewable energy projects. Our previous project successes have been built on a foundation of strong relationships with the landowners and communities hosting the projects. We are committed to working with landowners, neighbors, and all project stakeholders to safely and responsibly design and build projects that bring long-term benefits to the communities.

## Contact

**PHONE** (800) 338-8905  
**EMAIL** [info@southriplesolar.com](mailto:info@southriplesolar.com)

