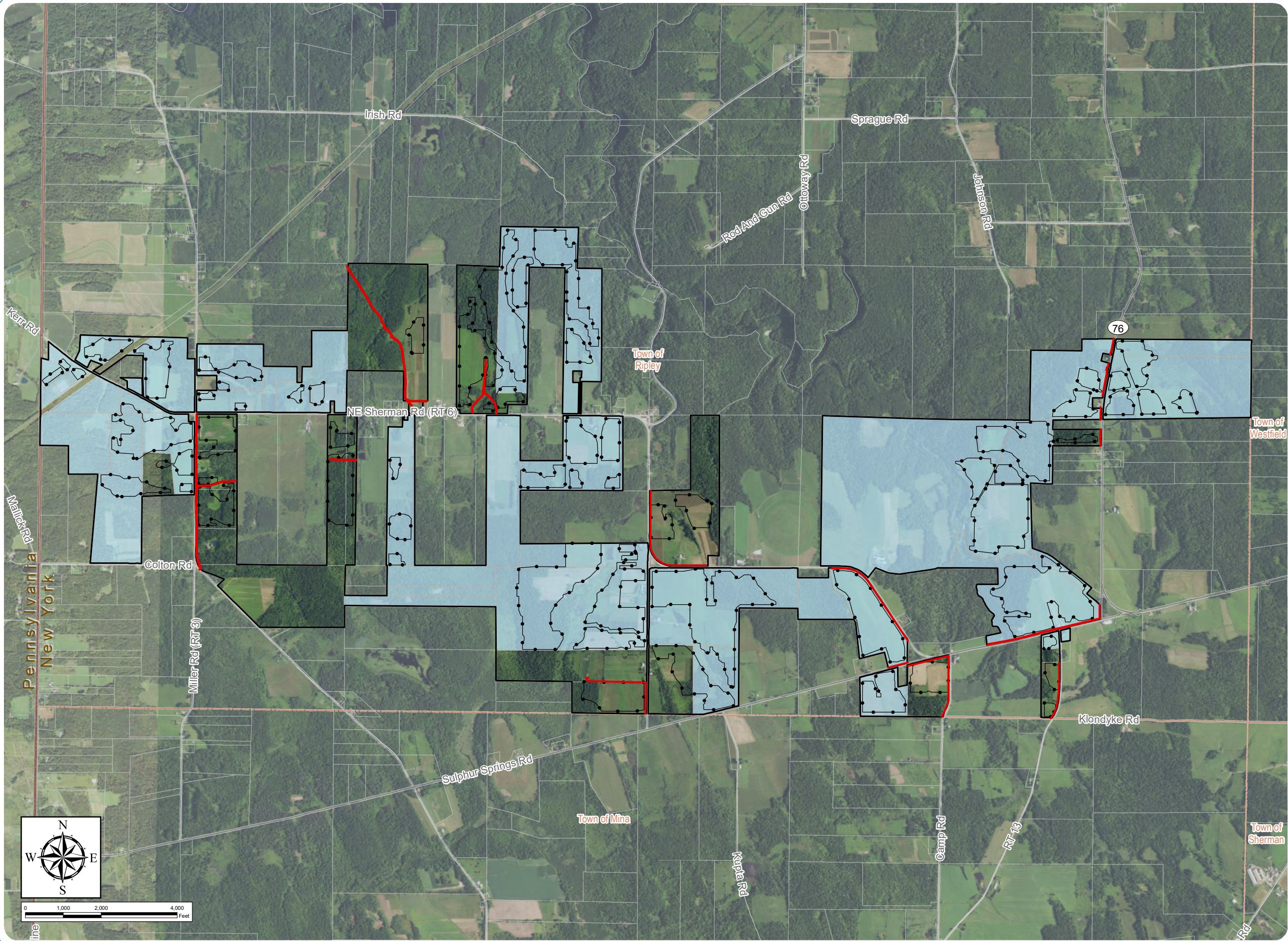


South Ripley Solar Project

Town of Ripley, Chautauqua County, New York

Section 94-c
Application Supplement
Matter No. 21-00750

Figure S4-2: Easements
Within Facility Site



- Existing Easement
- Existing Oil & Gas Lease/Easement Agreement (No Plotable Easement)

Facility Components

- Fenceline
- Facility Site
- Parcel Boundary

Notes: 1. Basemap: USDA NAIP "2019 New York 60cm" orthoimagery map service. 2. Easement information depicted on this figure provided by the Applicant and generated through on-site ALTA survey. 3. This map was generated in ArcMap on January 6, 2022. 4. This is a color graphic. Reproduction in grayscale may

