

## South Ripley Solar Project

Town of Ripley, Chautauqua County, New York

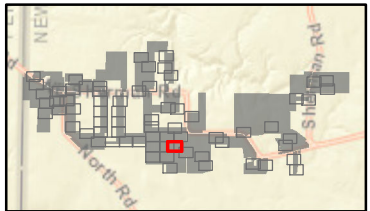
Section 94-c

Application Supplement

Matter No. 21-00750

### Appendix S14-C: Wetland and Stream Impact Drawings

- Wetland/Stream Impacts
- Permanent NYSDEC Regulated Adjacent Area Impact - Clearing
  - Temporary NYSDEC Regulated Adjacent Area Impact - Work Area
  - Temporary NYSDEC Regulated Adjacent Area Impact - Soil Disturbance
  - Temporary NYSDEC Regulated Adjacent Area Impact - Tree Clearing
  - Area of No Impact
- Delineated Wetlands/Streams
- Delineated Wetland w/ Federal Jurisdiction
  - Delineated Wetland w/ State & Federal Jurisdiction
  - Delineated Stream Non-Jurisdictional
  - Delineated Stream w/ Federal Jurisdiction
  - Regulated Adjacent Area Wetland
- Facility Components
- Access Road
  - Underground Collection Line
  - Inverter
  - PV Panel
  - Fenceline
  - Facility Site
  - Limit of Disturbance - Permanent Fill
  - Limit of Disturbance - Temporary Soil Disturbance
  - Limit of Disturbance - Grubbing
  - Limit of Disturbance - Tree Clearing
  - Limit of Disturbance - Temporary Work Area



Sheet 51 of 69

Notes: 1. Basemap: NYSDOP "2016" orthoimagery map service. 2. This map was generated in ArcMap on January 11, 2022. 3. This is a color graphic. Reproduction in grayscale may misrepresent the data.





South Ripley Solar Project

Town of Ripley, Chautauqua County, New York

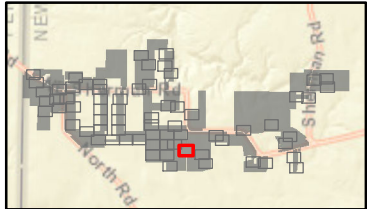
Section 94-c

Application Supplement

Matter No. 21-00750

Appendix S14-C: Wetland and Stream Impact Drawings

- Wetland/Stream Impacts
- Area of No Impact
- Delineated Wetlands/Streams
- Delineated Wetland w/ Federal Jurisdiction
  - Delineated Stream Non-Jurisdictional
- Facility Components
- Access Road
  - Underground Collection Line
  - Inverter
  - PV Panel
  - Fenceline
  - Facility Site
  - Limit of Disturbance - Permanent Fill
  - Limit of Disturbance - Temporary Soil Disturbance
  - Limit of Disturbance - Grubbing
  - Limit of Disturbance - Tree Clearing
  - Limit of Disturbance - Temporary Work Area



Sheet 52 of 69

Notes: 1. Basemap: NYSDOP "2016" orthoimagery map service. 2. This map was generated in ArcMap on January 11, 2022. 3. This is a color graphic. Reproduction in grayscale may misrepresent the data.





South Ripley Solar Project

Town of Ripley, Chautauqua County, New York

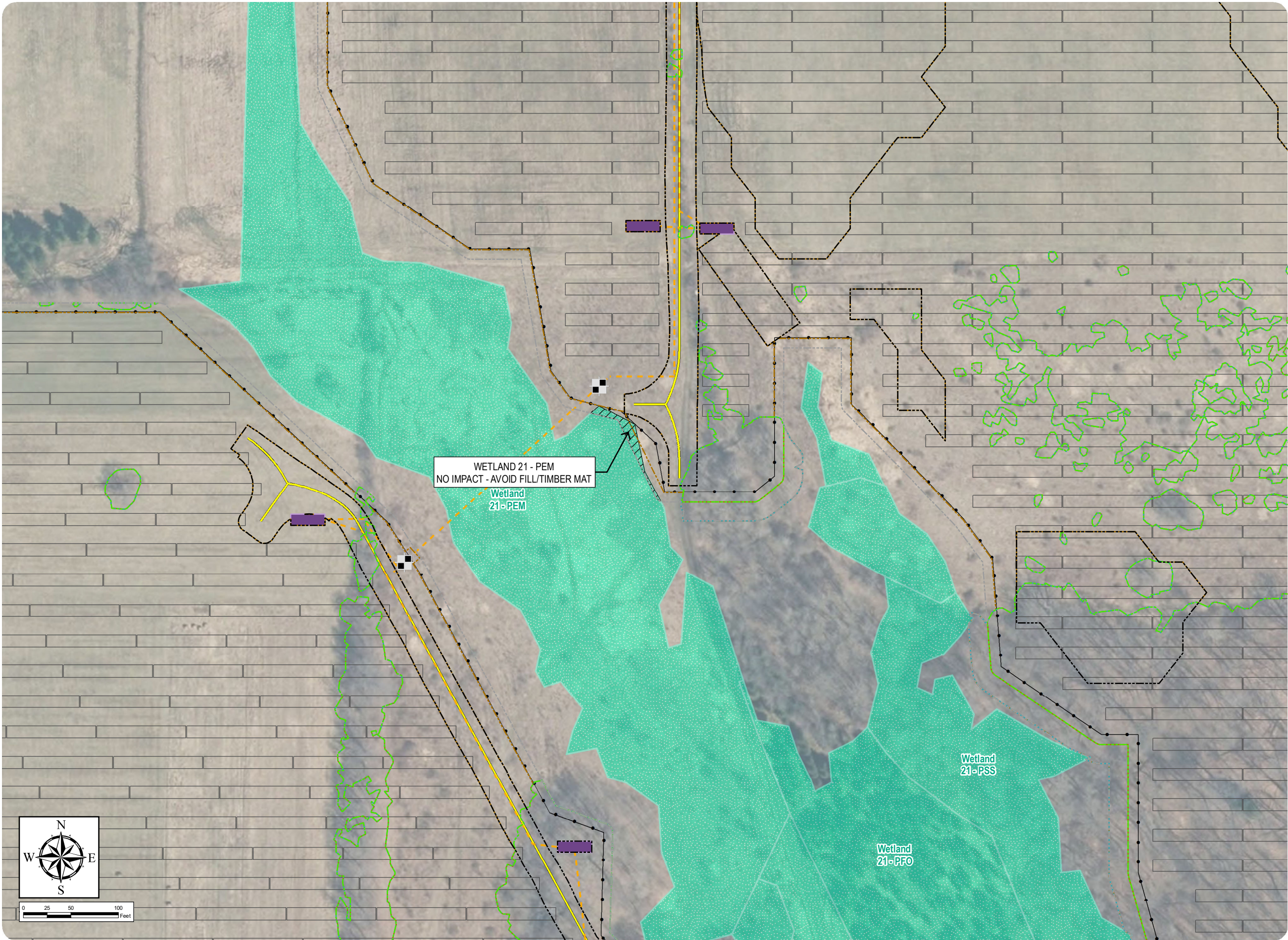
Section 94-c

Application Supplement

Matter No. 21-00750

Appendix S14-C: Wetland and Stream Impact Drawings

- Wetland/Stream Impacts
- Area of No Impact
- Delineated Wetlands/Streams
- Delineated Wetland w/ Federal Jurisdiction
- Facility Components
- Access Road
  - Underground Collection Line
  - HDD Location
  - Inverter
  - PV Panel
  - Fenceline
  - Facility Site
  - Limit of Disturbance - Permanent Fill
  - Limit of Disturbance - Temporary Soil Disturbance
  - Limit of Disturbance - Grubbing
  - Limit of Disturbance - Tree Clearing
  - Limit of Disturbance - Temporary Work Area



Sheet 53 of 69

Notes: 1. Basemap: NYSDOP "2016" orthoimagery map service. 2. This map was generated in ArcMap on January 11, 2022. 3. This is a color graphic. Reproduction in grayscale may misrepresent the data.



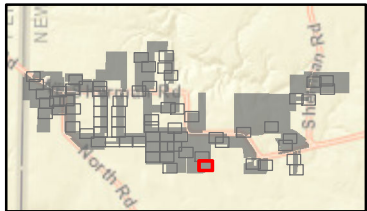
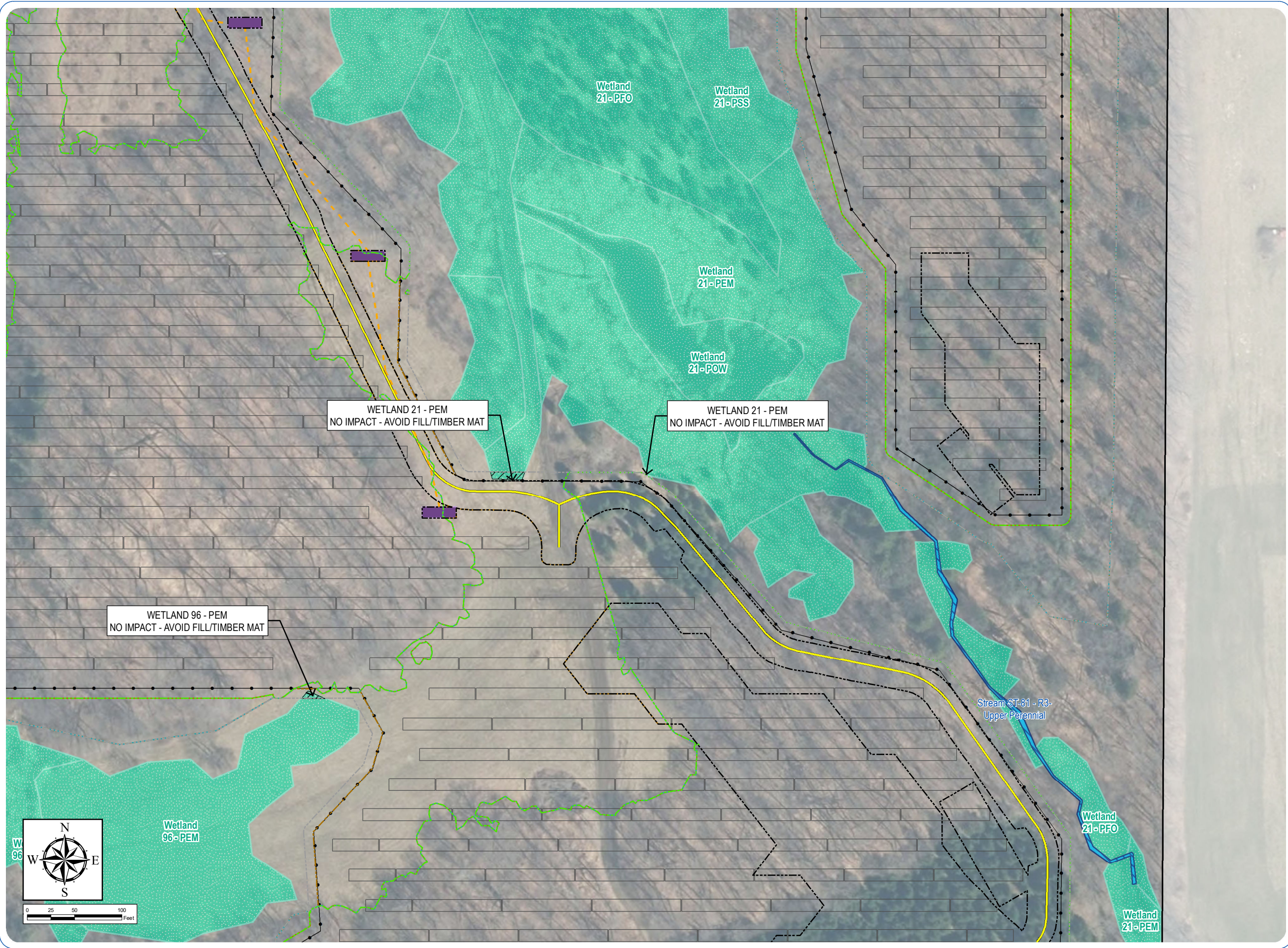


South Ripley Solar Project

Town of Ripley, Chautauqua County, New York  
Section 94-c  
Application Supplement  
Matter No. 21-00750

Appendix S14-C: Wetland and Stream Impact Drawings

- Wetland/Stream Impacts
- Area of No Impact
- Delineated Wetlands/Streams
- Delineated Wetland w/ Federal Jurisdiction
  - Delineated Stream w/ Federal Jurisdiction
- Facility Components
- Access Road
  - Underground Collection Line
  - Inverter
  - PV Panel
  - Fenceline
  - Facility Site
  - Limit of Disturbance - Permanent Fill
  - Limit of Disturbance - Temporary Soil Disturbance
  - Limit of Disturbance - Grubbing
  - Limit of Disturbance - Tree Clearing
  - Limit of Disturbance - Temporary Work Area



Sheet 54 of 69

Notes: 1. Basemap: NYSDOP "2016" orthoimagery map service. 2. This map was generated in ArcMap on January 11, 2022. 3. This is a color graphic. Reproduction in grayscale may misrepresent the data.





# South Ripley Solar Project

Town of Ripley, Chautauqua County, New York

Section 94-c

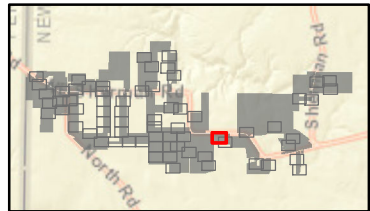
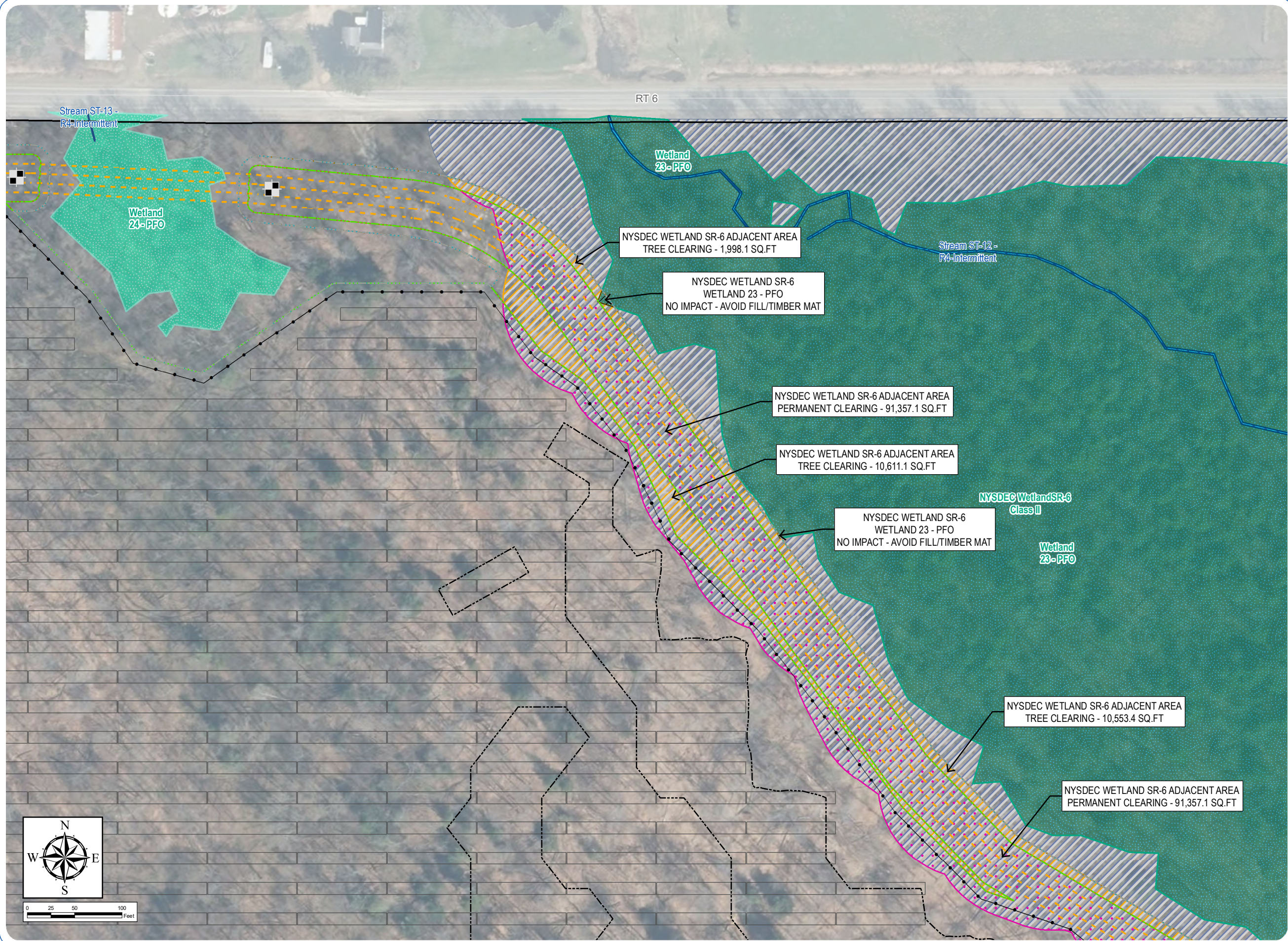
Application Supplement

Matter No. 21-00750

## Appendix S14-C: Wetland and Stream Impact Drawings

Wetland/Stream Impacts

- Permanent NYSDEC Regulated Adjacent Area Impact - Clearing
- Temporary NYSDEC Regulated Adjacent Area Impact - Tree Clearing
- Area of No Impact
- Delineated Wetlands/Streams
  - Delineated Wetland w/ Federal Jurisdiction
  - Delineated Wetland w/ State & Federal Jurisdiction
  - Delineated Stream w/ Federal Jurisdiction
  - Regulated Adjacent Area Wetland
- Facility Components
  - Access Road
  - Underground Collection Line
  - HDD Location
  - PV Panel
  - Fenceline
  - Facility Site
  - Limit of Disturbance - Permanent Fill
  - Limit of Disturbance - Temporary Soil Disturbance
  - Limit of Disturbance - Grubbing
  - Limit of Disturbance - Tree Clearing
  - Limit of Disturbance - Temporary Work Area



Sheet 55 of 69

Notes: 1. Basemap: NYSDOP "2016" orthoimagery map service. 2. This map was generated in ArcMap on January 11, 2022. 3. This is a color graphic. Reproduction in grayscale may misrepresent the data.





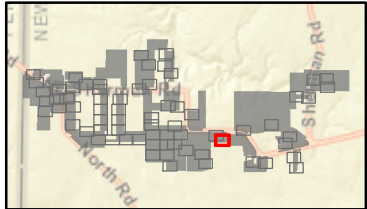
South Ripley Solar Project

Town of Ripley, Chautauqua County, New York

Section 94-c  
Application Supplement  
Matter No. 21-00750

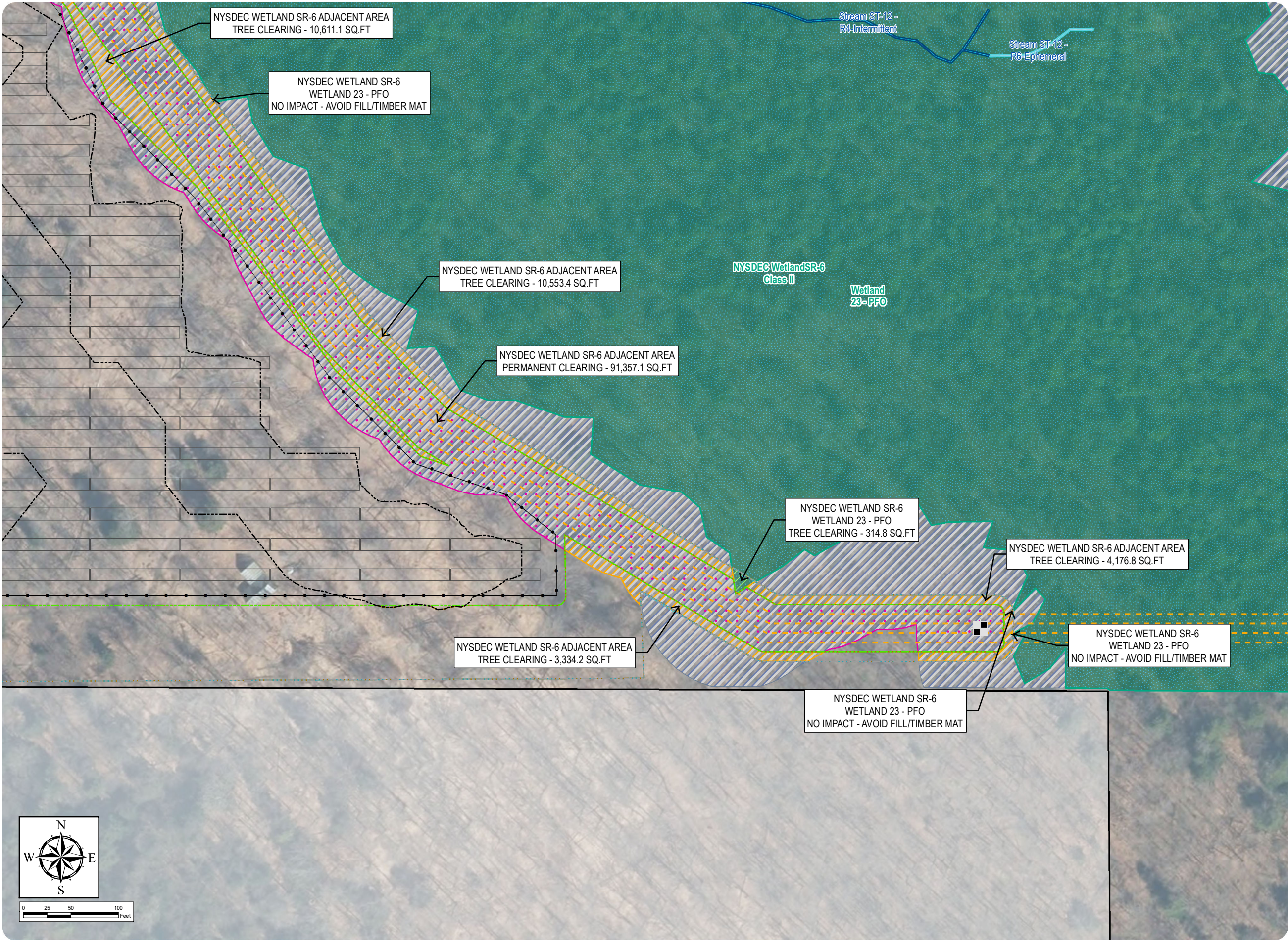
Appendix S14-C: Wetland and Stream Impact Drawings

- Wetland/Stream Impacts
- Permanent NYSDEC Regulated Adjacent Area Impact - Clearing
  - Temporary NYSDEC Regulated Adjacent Area Impact - Work Area
  - Temporary NYSDEC Regulated Adjacent Area Impact - Tree Clearing
  - Temporary Wetland Impact - Tree Clearing
  - Area of No Impact
- Delineated Wetlands/Streams
- Delineated Wetland w/ State & Federal Jurisdiction
  - Delineated Stream Non-Jurisdictional
  - Delineated Stream w/ Federal Jurisdiction
  - Regulated Adjacent Area Wetland
- Facility Components
- Access Road
  - Underground Collection Line
  - HDD Location
  - PV Panel
  - Fenceline
  - Facility Site
  - Limit of Disturbance - Permanent Fill
  - Limit of Disturbance - Temporary Soil Disturbance
  - Limit of Disturbance - Grubbing
  - Limit of Disturbance - Tree Clearing
  - Limit of Disturbance - Temporary Work Area



Sheet 56 of 69

Notes: 1. Basemap: NYSDOP "2016" orthoimagery map service. 2. This map was generated in ArcMap on January 11, 2022. 3. This is a color graphic. Reproduction in grayscale may misrepresent the data.





South Ripley Solar Project

Town of Ripley, Chautauqua County, New York

Section 94-c

Application Supplement

Matter No. 21-00750

Appendix S14-C: Wetland and Stream Impact Drawings

Wetland/Stream Impacts

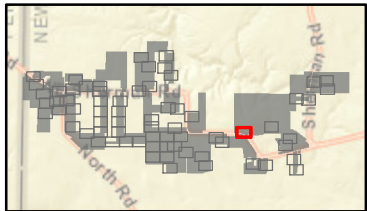
- Temporary NYSDEC Regulated Adjacent Area Impact - Work Area
- Temporary NYSDEC Regulated Adjacent Area Impact - Soil Disturbance
- Temporary Wetland Impact - Work Area
- Temporary Wetland Impact - Soil Disturbance

Delineated Wetlands/Streams

- Delineated Wetland w/ State & Federal Jurisdiction
- Regulated Adjacent Area Wetland

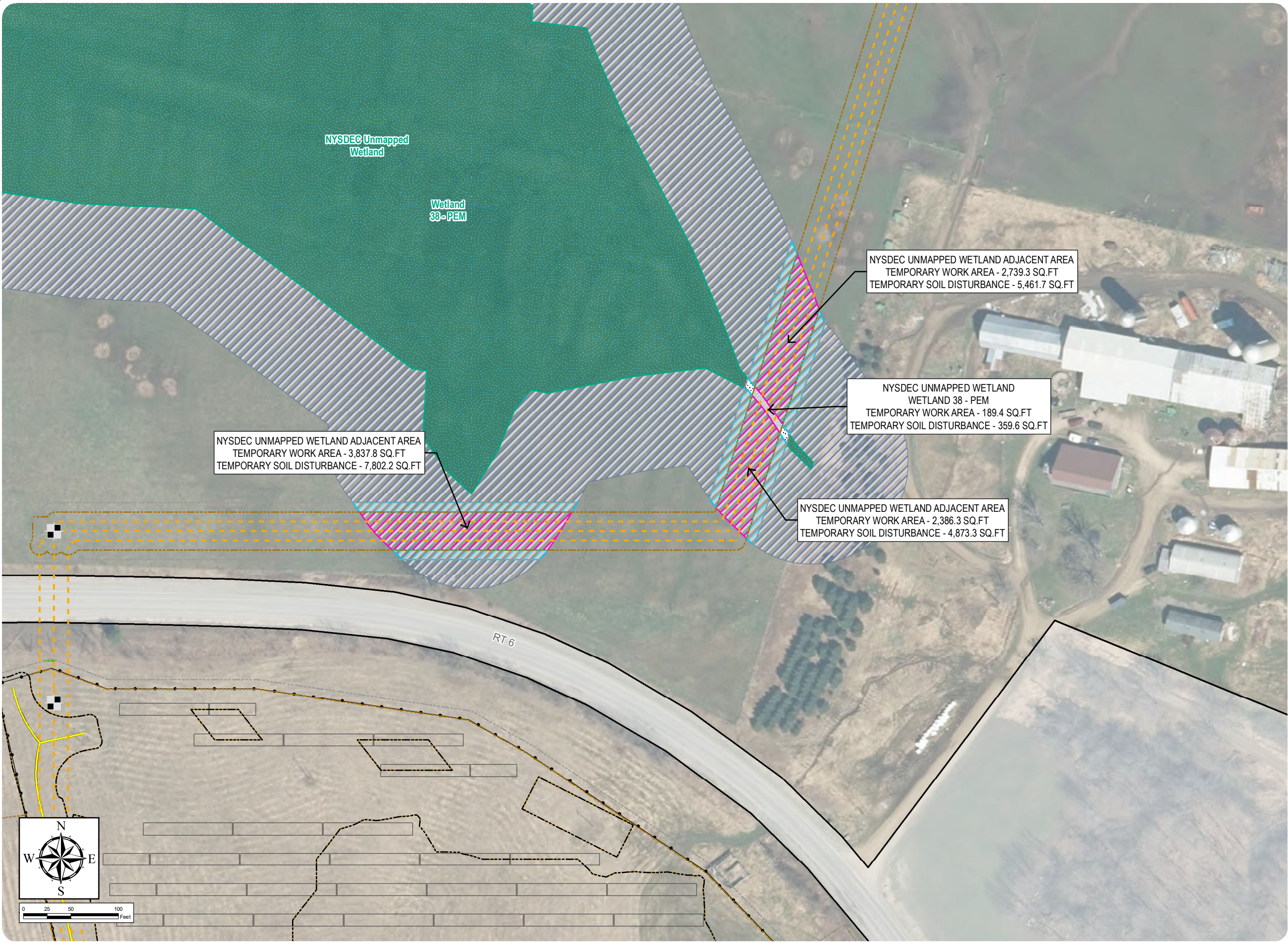
Facility Components

- Access Road
- Underground Collection Line
- HDD Location
- PV Panel
- Fenceline
- Facility Site
- Limit of Disturbance - Permanent Fill
- Limit of Disturbance - Temporary Soil Disturbance
- Limit of Disturbance - Grubbing
- Limit of Disturbance - Tree Clearing
- Limit of Disturbance - Temporary Work Area



Sheet 57 of 69

Notes: 1. Basemap: NYSDOP "2016" orthoimagery map service. 2. This map was generated in ArcMap on January 11, 2022. 3. This is a color graphic. Reproduction in grayscale may misrepresent the data.





South Ripley Solar Project

Town of Ripley, Chautauqua County, New York

Section 94-c

Application Supplement

Matter No. 21-00750

Appendix S14-C: Wetland and Stream Impact Drawings

Wetland/Stream Impacts

Area of No Impact

Delineated Wetlands/Streams

Delineated Wetland w/ Federal Jurisdiction

Delineated Stream w/ Federal Jurisdiction

Delineated Stream w/ Federal & State Jurisdiction

Facility Components

Access Road

Underground Collection Line

HDD Location

Inverter

PV Panel

Fenceline

Facility Site

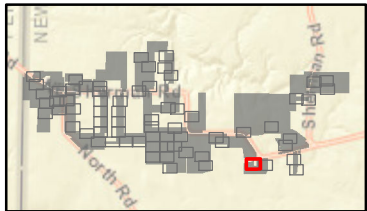
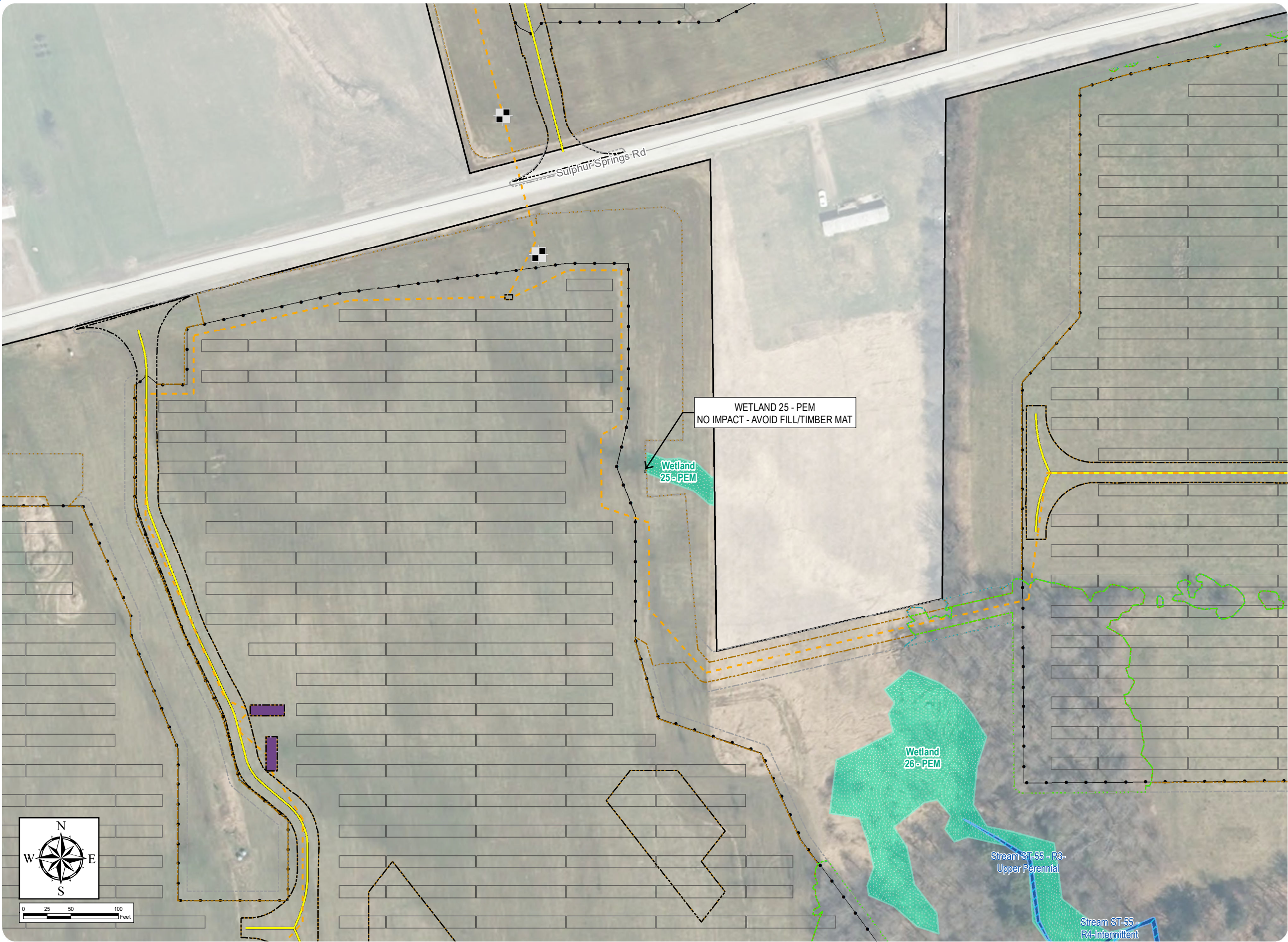
Limit of Disturbance - Permanent Fill

Limit of Disturbance - Temporary Soil Disturbance

Limit of Disturbance - Grubbing

Limit of Disturbance - Tree Clearing

Limit of Disturbance - Temporary Work Area



Sheet 58 of 69

Notes: 1. Basemap: NYSDOP "2016" orthoimagery map service. 2. This map was generated in ArcMap on January 11, 2022. 3. This is a color graphic. Reproduction in grayscale may misrepresent the data.





South Ripley Solar Project

Town of Ripley, Chautauqua County, New York

Section 94-c

Application Supplement

Matter No. 21-00750

Appendix S14-C: Wetland and Stream Impact Drawings

Wetland/Stream Impacts

Area of No Impact

Delineated Wetlands/Streams

Delineated Wetland w/ Federal Jurisdiction

Delineated Stream w/ Federal Jurisdiction

Delineated Stream w/ Federal & State Jurisdiction

Facility Components

Access Road

Underground Collection Line

Inverter

PV Panel

Fenceline

Facility Site

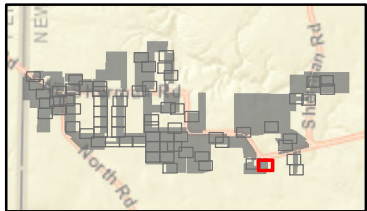
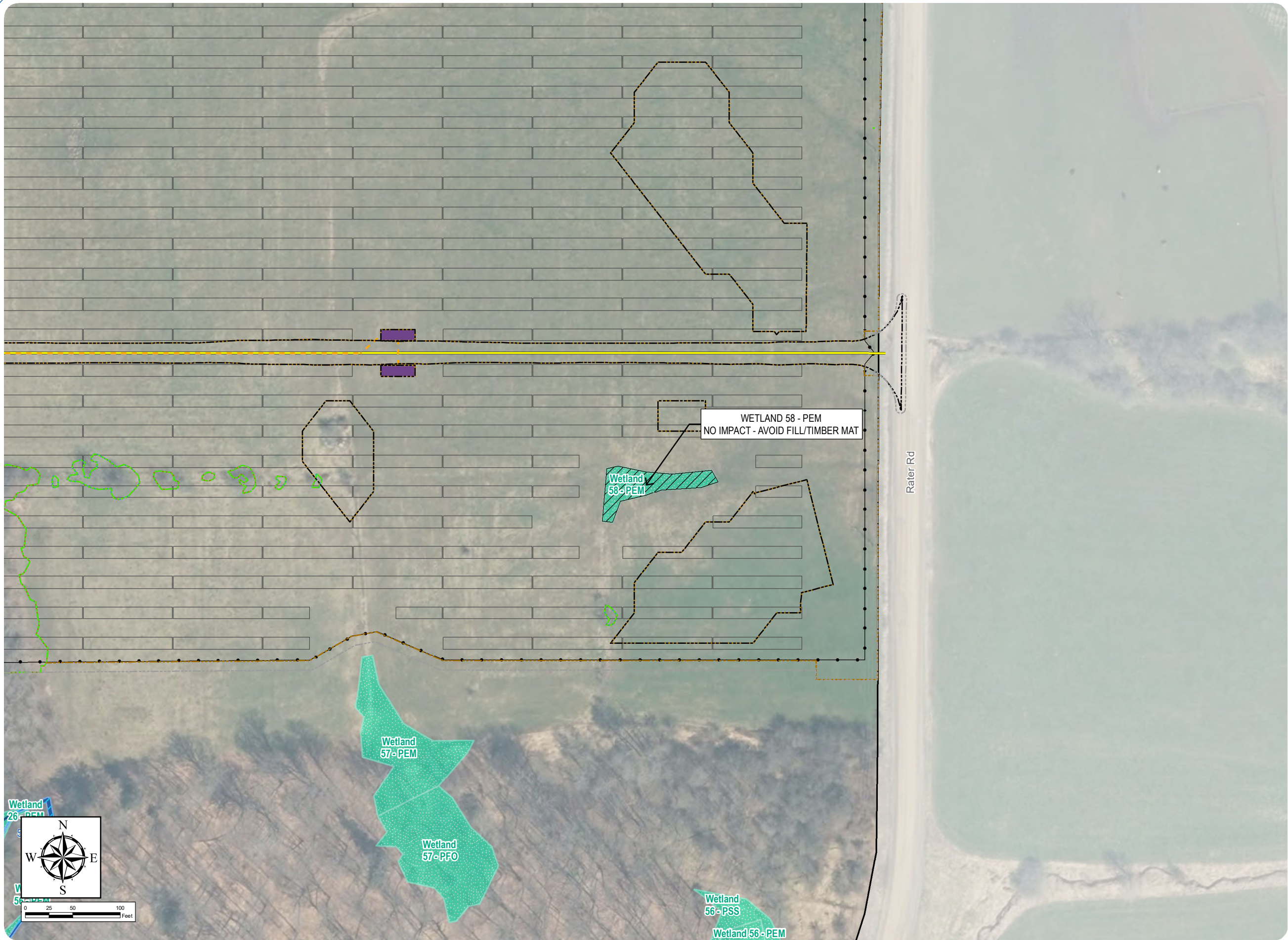
Limit of Disturbance - Permanent Fill

Limit of Disturbance - Temporary Soil Disturbance

Limit of Disturbance - Grubbing

Limit of Disturbance - Tree Clearing

Limit of Disturbance - Temporary Work Area



Sheet 59 of 69

Notes: 1. Basemap: NYSDOP "2016" orthoimagery map service. 2. This map was generated in ArcMap on January 11, 2022. 3. This is a color graphic. Reproduction in grayscale may misrepresent the data.

